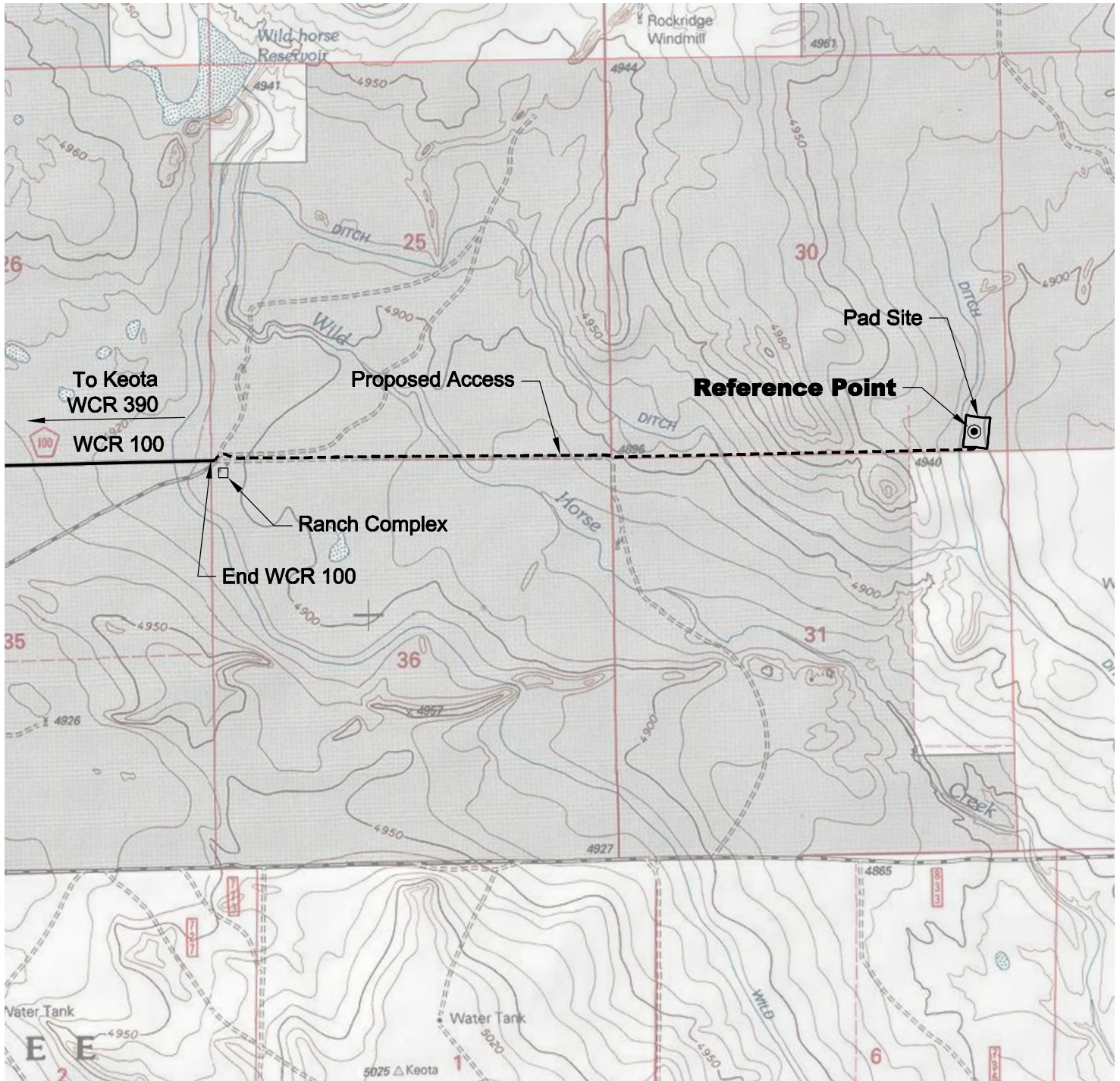


ACCESS ROAD MAP



DRIVING DIRECTIONS:

MP 0.0 - Intersection of WCR 103 & WCR 105 in Keota;
 North on WCR 105
 MP 0.8 - Right (East) on WCR 100
 MP 1.8 - End WCR 100, continue east on access to Pad
 MP 3.7 - Ptasnik 30-44-9-59 Pad

6/13/11



North

0 2000 4000

Graphic Scale in Feet
 1 inch = 2000 feet



LAND SURVEYING AND MAPPING
 LAFAYETTE - WINTER PARK
 Ph 303 666 0379 Fx 303 665 6320

CARRIZO OIL & GAS, INC
PTASNIK 30-44-9-59 PAD

SE1/4 SE1/4 SEC. 30 T9N R59W
6th PM WELD COUNTY COLORADO