



# **EOG Resources, Inc - RM**

**Weld County, CO**

**Sec 32, T12N, R62W, 6th P.M.**

**Randall Creek #4-32H**

**Wellbore #1**

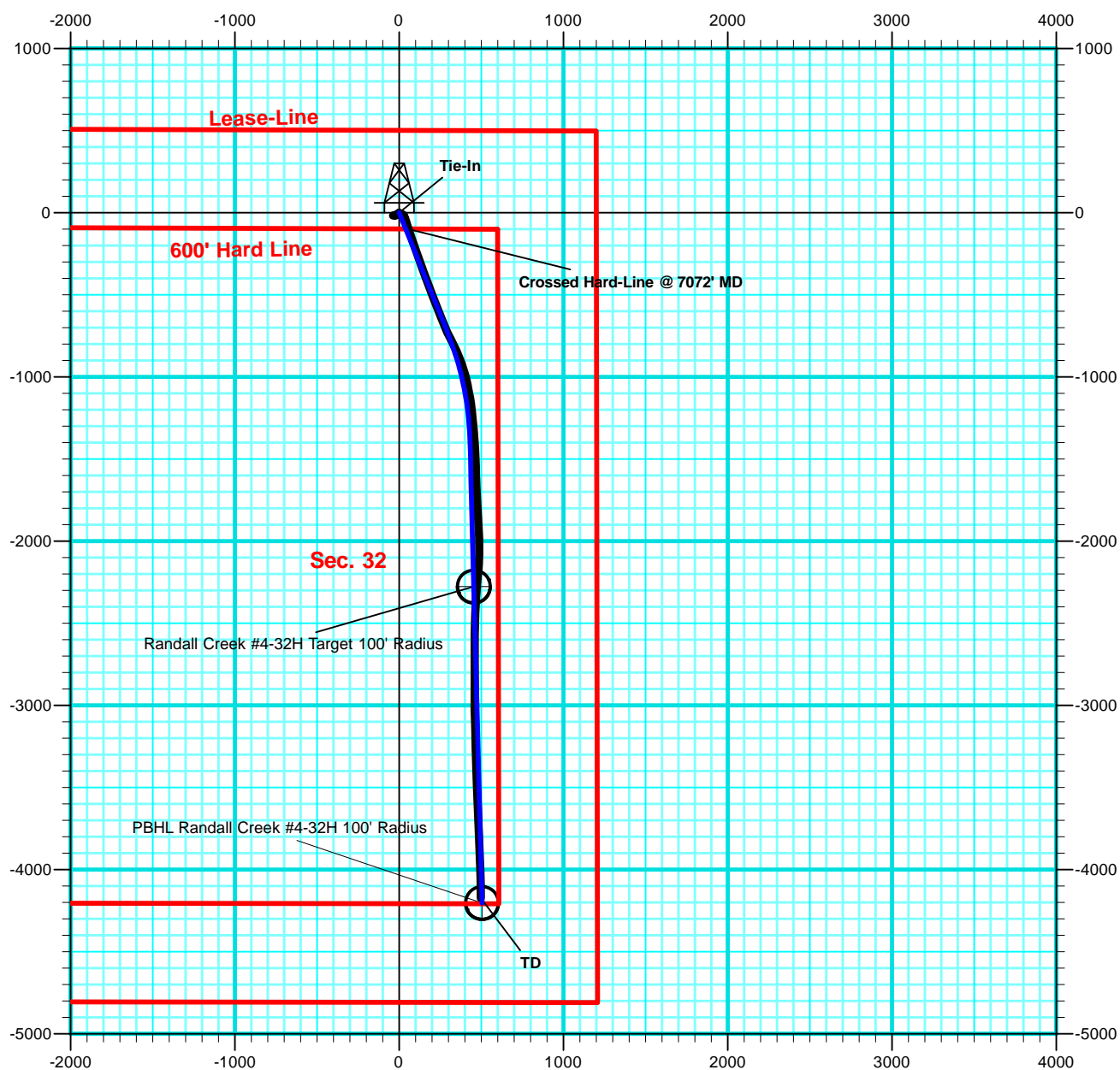
**Survey: MWD Survey**

## **DDC Survey Report**

**25 March, 2011**



**Weld County, CO**  
**Randall Creek #4-32H**  
**Quote 110164 & RM-11123**

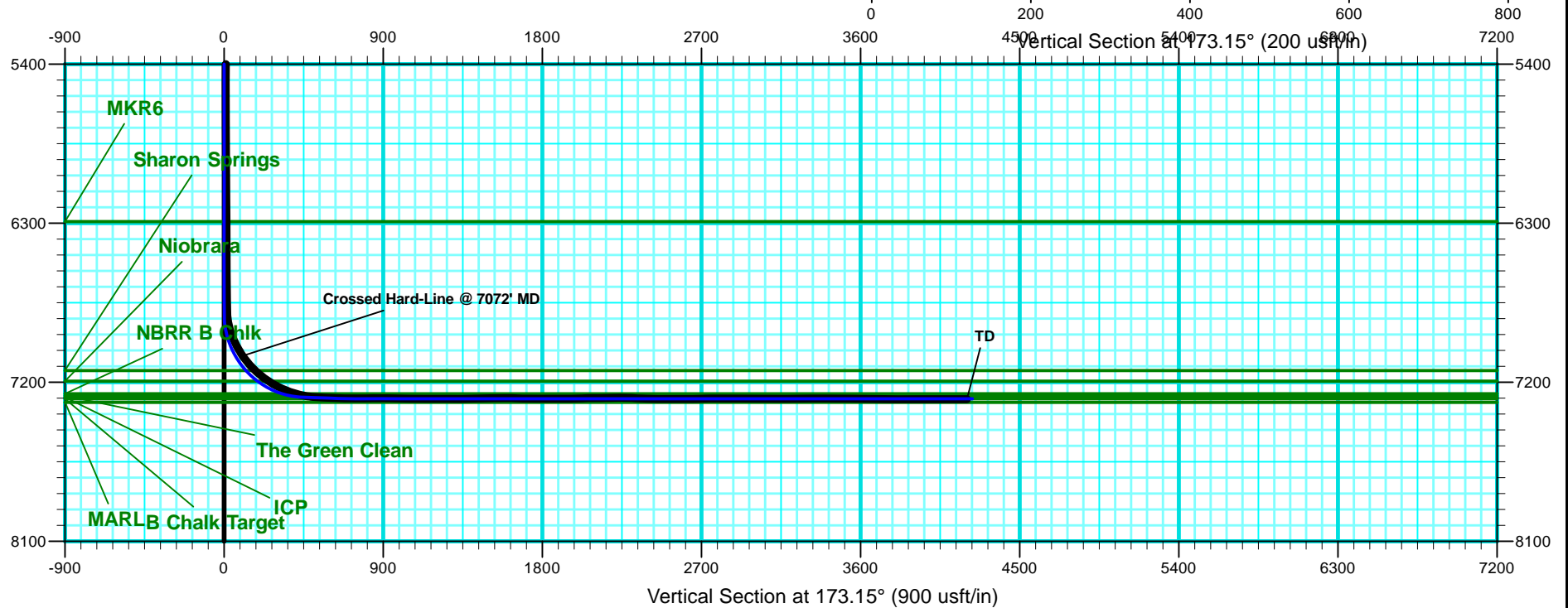
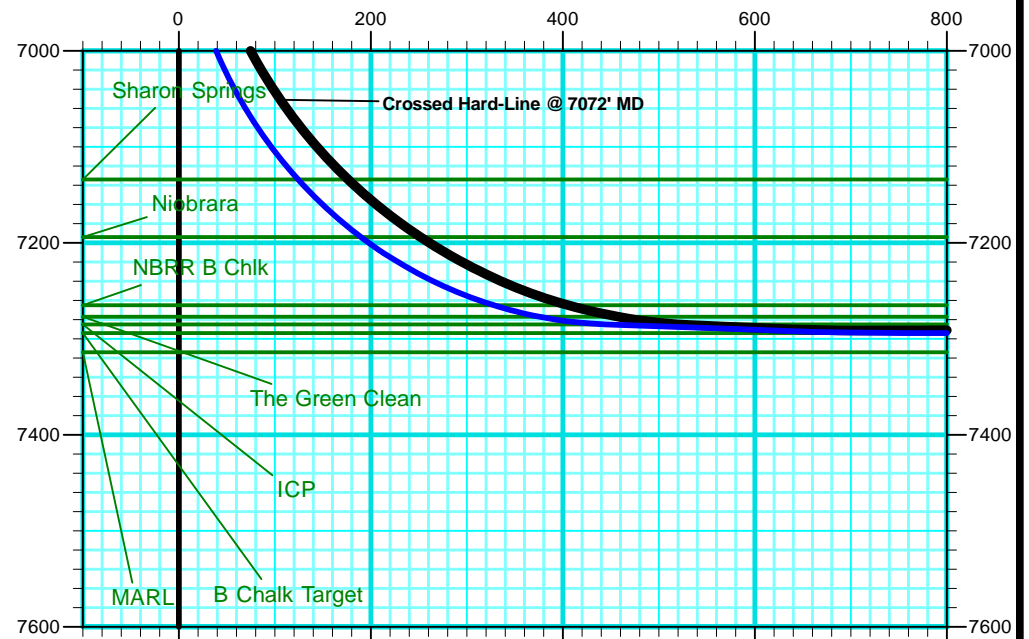




Weld County, CO

Randall Creek #4-32H

Quote 110164 & RM-11123



<b>Company:</b>	EOG Resources, Inc - RM	<b>Local Co-ordinate Reference:</b>	Well Randall Creek #4-32H
<b>Project:</b>	Weld County, CO	<b>TVD Reference:</b>	WELL @ 5370.0usft (SST #53)
<b>Site:</b>	Sec 32, T12N, R62W, 6th P.M.	<b>MD Reference:</b>	WELL @ 5370.0usft (SST #53)
<b>Well:</b>	Randall Creek #4-32H	<b>North Reference:</b>	True
<b>Wellbore:</b>	Wellbore #1	<b>Survey Calculation Method:</b>	Minimum Curvature
<b>Design:</b>	Wellbore #1	<b>Database:</b>	EDM 5000.1 Single User Db

<b>Project</b>	Weld County, CO		
<b>Map System:</b>	US State Plane 1927 (Exact solution)	<b>System Datum:</b>	Mean Sea Level
<b>Geo Datum:</b>	NAD 1927 (NADCON CONUS)		
<b>Map Zone:</b>	Colorado North 501		

<b>Site</b>	Sec 32, T12N, R62W, 6th P.M.		
<b>Site Position:</b>		<b>Northing:</b>	599,050.49 usft
<b>From:</b>	Map	<b>Easting:</b>	2,320,710.15 usft
<b>Position Uncertainty:</b>	0.0 usft	<b>Slot Radius:</b>	13-3/16 "
		<b>Latitude:</b>	40° 58' 19.260 N
		<b>Longitude:</b>	104° 20' 19.244 W
		<b>Grid Convergence:</b>	0.75 °

<b>Well</b>	Randall Creek #4-32H		
<b>Well Position</b>	<b>+N-S</b>	0.0 usft	<b>Northing:</b> 599,050.49 usft
	<b>+E-W</b>	0.0 usft	<b>Easting:</b> 2,320,710.15 usft
<b>Position Uncertainty</b>	0.0 usft	<b>Wellhead Elevation:</b>	usft
		<b>Latitude:</b>	40° 58' 19.260 N
		<b>Longitude:</b>	104° 20' 19.244 W
		<b>Ground Level:</b>	5,347.0 usft

<b>Wellbore</b>	Wellbore #1				
<b>Magnetics</b>	<b>Model Name</b>	<b>Sample Date</b>	<b>Declination (°)</b>	<b>Dip Angle (°)</b>	<b>Field Strength (nT)</b>
	IGRF2010	3/2/2011	8.72	67.59	53,500

<b>Design</b>	Wellbore #1				
<b>Audit Notes:</b>					
<b>Version:</b>	1.0	<b>Phase:</b>	ACTUAL	<b>Tie On Depth:</b>	0.0
<b>Vertical Section:</b>	<b>Depth From (TVD) (usft)</b>	<b>+N-S (usft)</b>	<b>+E-W (usft)</b>	<b>Direction (°)</b>	
	0.0	0.0	0.0	173.15	

<b>Survey Program</b>	<b>Date</b>	3/25/2011			
<b>From (usft)</b>	<b>To (usft)</b>	<b>Survey (Wellbore)</b>	<b>Tool Name</b>	<b>Description</b>	
1,409.0	11,295.0	MWD Survey (Wellbore #1)	MWD default	MWD - Standard	

<b>Survey</b>										
<b>Measured Depth (usft)</b>	<b>Inclination (°)</b>	<b>Azimuth (°)</b>	<b>Vertical Depth (usft)</b>	<b>+N-S (usft)</b>	<b>+E-W (usft)</b>	<b>Vertical Section (usft)</b>	<b>Dogleg Rate (°/100usft)</b>	<b>Build Rate (°/100usft)</b>	<b>Turn Rate (°/100usft)</b>	
<b>Tie-In</b>										
1,409.0	0.00	0.00	1,409.0	0.0	0.0	0.0	0.00	0.00	0.00	
1,422.0	0.90	247.50	1,422.0	0.0	-0.1	0.0	6.92	6.92	0.00	
1,515.0	1.00	238.90	1,515.0	-0.7	-1.5	0.6	0.19	0.11	-9.25	
1,607.0	1.30	226.40	1,607.0	-1.9	-2.9	1.5	0.42	0.33	-13.59	
1,699.0	1.50	230.50	1,698.9	-3.4	-4.6	2.8	0.24	0.22	4.46	
1,791.0	1.30	234.30	1,790.9	-4.7	-6.4	3.9	0.24	-0.22	4.13	
1,883.0	1.10	229.90	1,882.9	-5.9	-7.9	4.9	0.24	-0.22	-4.78	
1,976.0	1.00	232.90	1,975.9	-7.0	-9.2	5.8	0.12	-0.11	3.23	
2,232.0	1.40	238.90	2,231.8	-9.9	-13.7	8.2	0.16	0.16	2.34	

<b>Company:</b>	EOG Resources, Inc - RM	<b>Local Co-ordinate Reference:</b>	Well Randall Creek #4-32H
<b>Project:</b>	Weld County, CO	<b>TVD Reference:</b>	WELL @ 5370.0usft (SST #53)
<b>Site:</b>	Sec 32, T12N, R62W, 6th P.M.	<b>MD Reference:</b>	WELL @ 5370.0usft (SST #53)
<b>Well:</b>	Randall Creek #4-32H	<b>North Reference:</b>	True
<b>Wellbore:</b>	Wellbore #1	<b>Survey Calculation Method:</b>	Minimum Curvature
<b>Design:</b>	Wellbore #1	<b>Database:</b>	EDM 5000.1 Single User Db

Survey

Measured Depth (usft)	Inclination (°)	Azimuth (°)	Vertical Depth (usft)	+N/-S (usft)	+E/-W (usft)	Vertical Section (usft)	Dogleg Rate (°/100usft)	Build Rate (°/100usft)	Turn Rate (°/100usft)
2,454.0	1.20	247.20	2,453.8	-12.2	-18.1	10.0	0.12	-0.09	3.74
2,708.0	1.30	260.40	2,707.7	-13.8	-23.4	10.9	0.12	0.04	5.20
2,964.0	1.30	254.60	2,963.6	-15.0	-29.1	11.4	0.05	0.00	-2.27
3,218.0	1.10	251.60	3,217.6	-16.5	-34.2	12.3	0.08	-0.08	-1.18
3,470.0	0.50	246.40	3,469.6	-17.7	-37.5	13.1	0.24	-0.24	-2.06
3,724.0	1.10	85.40	3,723.5	-18.0	-36.1	13.6	0.62	0.24	-63.39
3,978.0	1.20	94.20	3,977.5	-18.0	-31.0	14.2	0.08	0.04	3.46
4,232.0	0.80	81.10	4,231.5	-17.9	-26.6	14.6	0.18	-0.16	-5.16
4,486.0	1.00	77.10	4,485.4	-17.1	-22.7	14.3	0.08	0.08	-1.57
4,740.0	1.30	65.60	4,739.4	-15.5	-17.9	13.2	0.15	0.12	-4.53
4,994.0	1.40	70.90	4,993.3	-13.3	-12.3	11.7	0.06	0.04	2.09
5,249.0	1.60	66.60	5,248.2	-10.8	-6.1	10.0	0.09	0.08	-1.69
5,502.0	1.40	85.20	5,501.1	-9.2	0.2	9.1	0.21	-0.08	7.35
5,756.0	1.30	103.10	5,755.1	-9.6	6.1	10.2	0.17	-0.04	7.05
6,008.0	1.00	108.70	6,007.0	-10.9	11.0	12.1	0.13	-0.12	2.22
6,134.0	1.20	92.90	6,133.0	-11.3	13.3	12.8	0.29	0.16	-12.54
6,166.0	1.20	96.20	6,165.0	-11.4	14.0	13.0	0.22	0.00	10.31
6,198.0	1.00	93.60	6,197.0	-11.4	14.6	13.1	0.64	-0.63	-8.13
6,229.0	1.20	99.60	6,228.0	-11.5	15.2	13.2	0.74	0.65	19.35
6,260.0	1.10	94.80	6,259.0	-11.6	15.8	13.4	0.45	-0.32	-15.48
6,292.0	1.00	96.50	6,291.0	-11.6	16.4	13.5	0.33	-0.31	5.31
6,324.0	1.30	98.90	6,322.9	-11.7	17.0	13.7	0.95	0.94	7.50
6,355.0	1.20	103.50	6,353.9	-11.9	17.7	13.9	0.46	-0.32	14.84
6,387.0	1.30	102.20	6,385.9	-12.0	18.4	14.1	0.32	0.31	-4.06
6,419.0	1.10	106.30	6,417.9	-12.2	19.0	14.4	0.68	-0.63	12.81
6,450.0	1.00	102.20	6,448.9	-12.3	19.6	14.6	0.40	-0.32	-13.23
6,483.0	1.10	98.50	6,481.9	-12.4	20.2	14.7	0.37	0.30	-11.21
6,514.0	1.00	101.50	6,512.9	-12.5	20.7	14.9	0.37	-0.32	9.68
6,546.0	1.10	110.50	6,544.9	-12.7	21.3	15.1	0.60	0.31	28.13
6,578.0	1.10	109.00	6,576.9	-12.9	21.9	15.4	0.09	0.00	-4.69
6,610.0	1.10	106.90	6,608.9	-13.1	22.4	15.7	0.13	0.00	-6.56
6,642.0	1.10	102.20	6,640.9	-13.2	23.0	15.9	0.28	0.00	-14.69
6,674.0	1.20	103.60	6,672.9	-13.4	23.7	16.1	0.32	0.31	4.38
6,705.0	1.10	98.10	6,703.9	-13.5	24.3	16.3	0.48	-0.32	-17.74
6,737.0	0.90	98.70	6,735.9	-13.6	24.8	16.4	0.63	-0.63	1.88
6,768.0	1.10	95.40	6,766.9	-13.6	25.4	16.6	0.67	0.65	-10.65
6,799.0	2.20	136.90	6,797.9	-14.1	26.1	17.1	5.02	3.55	133.87
6,831.0	6.30	152.10	6,829.8	-16.1	27.3	19.2	13.18	12.81	47.50
6,863.0	10.90	155.30	6,861.4	-20.4	29.4	23.8	14.45	14.38	10.00
6,894.0	15.40	156.60	6,891.6	-26.9	32.3	30.5	14.55	14.52	4.19
6,925.0	20.00	157.00	6,921.1	-35.5	36.0	39.6	14.84	14.84	1.29
6,956.0	23.70	159.70	6,949.9	-46.2	40.2	50.7	12.36	11.94	8.71
6,988.0	26.30	162.40	6,978.9	-59.0	44.6	63.9	8.87	8.13	8.44
7,020.0	29.50	163.30	7,007.1	-73.3	49.0	78.7	10.09	10.00	2.81

<b>Company:</b>	EOG Resources, Inc - RM	<b>Local Co-ordinate Reference:</b>	Well Randall Creek #4-32H
<b>Project:</b>	Weld County, CO	<b>TVD Reference:</b>	WELL @ 5370.0usft (SST #53)
<b>Site:</b>	Sec 32, T12N, R62W, 6th P.M.	<b>MD Reference:</b>	WELL @ 5370.0usft (SST #53)
<b>Well:</b>	Randall Creek #4-32H	<b>North Reference:</b>	True
<b>Wellbore:</b>	Wellbore #1	<b>Survey Calculation Method:</b>	Minimum Curvature
<b>Design:</b>	Wellbore #1	<b>Database:</b>	EDM 5000.1 Single User Db

Survey

Measured Depth (usft)	Inclination (°)	Azimuth (°)	Vertical Depth (usft)	+N/-S (usft)	+E/-W (usft)	Vertical Section (usft)	Dogleg Rate (°/100usft)	Build Rate (°/100usft)	Turn Rate (°/100usft)
7,051.0	32.80	162.90	7,033.7	-88.7	53.6	94.4	10.67	10.65	-1.29
<b>Crossed Hard-Line @ 7072' MD</b>									
7,072.0	35.10	162.49	7,051.1	-99.9	57.1	106.0	10.99	10.94	-1.93
7,083.0	36.30	162.30	7,060.0	-106.0	59.1	112.3	10.99	10.94	-1.77
7,114.0	39.40	161.70	7,084.5	-124.1	65.0	130.9	10.07	10.00	-1.94
7,146.0	42.70	160.60	7,108.6	-144.0	71.8	151.5	10.56	10.31	-3.44
7,178.0	46.40	160.50	7,131.4	-165.1	79.2	173.4	11.56	11.56	-0.31
7,209.0	50.40	160.30	7,152.0	-187.0	87.0	196.0	12.91	12.90	-0.65
7,241.0	53.50	160.50	7,171.7	-210.7	95.5	220.6	9.70	9.69	0.63
7,273.0	56.50	160.90	7,190.1	-235.4	104.1	246.2	9.43	9.38	1.25
7,304.0	59.20	160.70	7,206.6	-260.2	112.7	271.8	8.73	8.71	-0.65
7,336.0	62.50	160.80	7,222.2	-286.6	122.0	299.1	10.32	10.31	0.31
7,368.0	65.50	160.50	7,236.2	-313.7	131.5	327.2	9.41	9.38	-0.94
7,400.0	68.90	160.30	7,248.6	-341.5	141.4	355.9	10.64	10.63	-0.63
7,431.0	72.70	159.90	7,258.8	-369.0	151.3	384.5	12.32	12.26	-1.29
7,464.0	75.70	159.40	7,267.8	-398.8	162.4	415.3	9.21	9.09	-1.52
7,496.0	78.90	159.40	7,274.8	-428.0	173.4	445.6	10.00	10.00	0.00
7,527.0	81.20	159.00	7,280.1	-456.6	184.2	475.3	7.53	7.42	-1.29
7,537.0	82.60	159.30	7,281.6	-465.8	187.7	484.9	14.31	14.00	3.00
7,581.0	87.20	158.80	7,285.5	-506.7	203.4	527.4	10.52	10.45	-1.14
7,612.0	87.70	158.50	7,286.8	-535.6	214.7	557.4	1.88	1.61	-0.97
7,643.0	88.00	158.40	7,288.0	-564.4	226.1	587.3	1.02	0.97	-0.32
7,675.0	87.70	157.90	7,289.2	-594.1	238.0	618.2	1.82	-0.94	-1.56
7,707.0	88.00	158.70	7,290.4	-623.8	249.8	649.1	2.67	0.94	2.50
7,738.0	88.90	157.80	7,291.2	-652.6	261.3	679.1	4.11	2.90	-2.90
7,769.0	90.30	157.90	7,291.5	-681.3	272.9	709.0	4.53	4.52	0.32
7,801.0	90.30	156.90	7,291.3	-710.8	285.2	739.8	3.12	0.00	-3.13
7,833.0	90.00	154.10	7,291.2	-739.9	298.5	770.3	8.80	-0.94	-8.75
7,864.0	90.20	153.30	7,291.2	-767.7	312.3	799.5	2.66	0.65	-2.58
7,896.0	90.30	153.70	7,291.0	-796.4	326.5	829.6	1.29	0.31	1.25
7,928.0	90.10	154.30	7,290.9	-825.1	340.6	859.9	1.98	-0.63	1.88
7,959.0	90.10	154.70	7,290.9	-853.1	353.9	889.2	1.29	0.00	1.29
7,991.0	89.90	158.10	7,290.9	-882.4	366.7	919.9	10.64	-0.63	10.63
8,022.0	89.20	161.10	7,291.1	-911.5	377.5	950.0	9.94	-2.26	9.68
8,054.0	88.40	162.20	7,291.8	-941.8	387.6	981.3	4.25	-2.50	3.44
8,086.0	88.80	163.50	7,292.5	-972.4	397.0	1,012.8	4.25	1.25	4.06
8,118.0	89.00	165.40	7,293.2	-1,003.2	405.6	1,044.4	5.97	0.63	5.94
8,150.0	89.10	166.90	7,293.7	-1,034.3	413.3	1,076.2	4.70	0.31	4.69
8,181.0	89.30	168.60	7,294.1	-1,064.6	419.8	1,107.1	5.52	0.65	5.48
8,213.0	90.50	169.50	7,294.2	-1,096.0	425.9	1,139.0	4.69	3.75	2.81
8,245.0	90.10	169.80	7,294.0	-1,127.5	431.7	1,170.9	1.56	-1.25	0.94
8,277.0	89.50	171.20	7,294.1	-1,159.0	436.9	1,202.9	4.76	-1.88	4.38
8,308.0	90.40	173.40	7,294.2	-1,189.8	441.1	1,233.9	7.67	2.90	7.10

<b>Company:</b>	EOG Resources, Inc - RM	<b>Local Co-ordinate Reference:</b>	Well Randall Creek #4-32H
<b>Project:</b>	Weld County, CO	<b>TVD Reference:</b>	WELL @ 5370.0usft (SST #53)
<b>Site:</b>	Sec 32, T12N, R62W, 6th P.M.	<b>MD Reference:</b>	WELL @ 5370.0usft (SST #53)
<b>Well:</b>	Randall Creek #4-32H	<b>North Reference:</b>	True
<b>Wellbore:</b>	Wellbore #1	<b>Survey Calculation Method:</b>	Minimum Curvature
<b>Design:</b>	Wellbore #1	<b>Database:</b>	EDM 5000.1 Single User Db

**Survey**

Measured Depth (usft)	Inclination (°)	Azimuth (°)	Vertical Depth (usft)	+N/-S (usft)	+E/-W (usft)	Vertical Section (usft)	Dogleg Rate (°/100usft)	Build Rate (°/100usft)	Turn Rate (°/100usft)
8,340.0	90.20	174.50	7,294.0	-1,221.6	444.5	1,265.9	3.49	-0.63	3.44
8,372.0	89.40	174.70	7,294.1	-1,253.4	447.5	1,297.9	2.58	-2.50	0.63
8,403.0	90.00	175.50	7,294.3	-1,284.3	450.1	1,328.8	3.23	1.94	2.58
8,435.0	90.90	175.40	7,294.0	-1,316.2	452.7	1,360.8	2.83	2.81	-0.31
8,468.0	90.90	176.00	7,293.5	-1,349.1	455.1	1,393.8	1.82	0.00	1.82
8,500.0	91.20	175.50	7,292.9	-1,381.0	457.5	1,425.7	1.82	0.94	-1.56
8,531.0	91.40	175.30	7,292.2	-1,411.9	460.0	1,456.7	0.91	0.65	-0.65
8,564.0	91.80	175.80	7,291.3	-1,444.8	462.6	1,489.7	1.94	1.21	1.52
8,595.0	90.60	177.00	7,290.6	-1,475.7	464.5	1,520.6	5.47	-3.87	3.87
8,627.0	89.10	177.80	7,290.7	-1,507.7	466.0	1,552.5	5.31	-4.69	2.50
8,658.0	90.90	179.80	7,290.7	-1,538.7	466.6	1,583.4	8.68	5.81	6.45
8,691.0	90.40	178.50	7,290.3	-1,571.7	467.1	1,616.2	4.22	-1.52	-3.94
8,722.0	87.90	178.40	7,290.8	-1,602.7	467.9	1,647.0	8.07	-8.06	-0.32
8,754.0	87.50	177.50	7,292.1	-1,634.6	469.1	1,678.9	3.08	-1.25	-2.81
8,786.0	89.00	177.40	7,293.1	-1,666.6	470.5	1,710.8	4.70	4.69	-0.31
8,818.0	90.20	176.90	7,293.3	-1,698.5	472.1	1,742.7	4.06	3.75	-1.56
8,850.0	90.60	177.90	7,293.1	-1,730.5	473.5	1,774.6	3.37	1.25	3.13
8,881.0	89.10	176.70	7,293.1	-1,761.5	475.0	1,805.5	6.20	-4.84	-3.87
8,913.0	89.60	177.20	7,293.5	-1,793.4	476.7	1,837.5	2.21	1.56	1.56
8,945.0	91.40	177.10	7,293.2	-1,825.4	478.3	1,869.4	5.63	5.63	-0.31
8,976.0	90.30	176.60	7,292.8	-1,856.3	480.0	1,900.3	3.90	-3.55	-1.61
9,008.0	89.50	175.60	7,292.8	-1,888.3	482.2	1,932.3	4.00	-2.50	-3.13
9,039.0	90.60	176.30	7,292.8	-1,919.2	484.4	1,963.2	4.21	3.55	2.26
9,071.0	91.10	177.60	7,292.3	-1,951.1	486.1	1,995.2	4.35	1.56	4.06
9,103.0	91.80	179.00	7,291.5	-1,983.1	487.0	2,027.0	4.89	2.19	4.38
9,134.0	91.10	180.10	7,290.7	-2,014.1	487.3	2,057.8	4.20	-2.26	3.55
9,167.0	90.70	181.00	7,290.2	-2,047.1	486.9	2,090.5	2.98	-1.21	2.73
9,198.0	90.70	181.30	7,289.8	-2,078.1	486.3	2,121.2	0.97	0.00	0.97
9,230.0	91.20	181.30	7,289.3	-2,110.1	485.6	2,152.9	1.56	1.56	0.00
9,262.0	90.00	182.40	7,289.0	-2,142.0	484.6	2,184.5	5.09	-3.75	3.44
9,294.0	89.80	184.10	7,289.0	-2,174.0	482.7	2,216.0	5.35	-0.63	5.31
9,325.0	90.80	186.70	7,288.9	-2,204.8	479.8	2,246.3	8.99	3.23	8.39
9,357.0	90.00	185.40	7,288.6	-2,236.7	476.5	2,277.5	4.77	-2.50	-4.06
9,389.0	87.30	184.60	7,289.4	-2,268.5	473.7	2,308.8	8.80	-8.44	-2.50
9,420.0	87.10	184.30	7,290.9	-2,299.4	471.3	2,339.2	1.16	-0.65	-0.97
9,452.0	87.00	183.40	7,292.5	-2,331.3	469.1	2,370.6	2.83	-0.31	-2.81
9,484.0	88.10	183.80	7,293.9	-2,363.2	467.1	2,402.0	3.66	3.44	1.25
9,515.0	89.60	182.40	7,294.5	-2,394.1	465.4	2,432.6	6.62	4.84	-4.52
9,546.0	90.20	182.90	7,294.6	-2,425.1	464.0	2,463.1	2.52	1.94	1.61
9,577.0	89.80	182.60	7,294.6	-2,456.1	462.5	2,493.7	1.61	-1.29	-0.97
9,608.0	89.50	181.90	7,294.8	-2,487.0	461.3	2,524.3	2.46	-0.97	-2.26
9,641.0	89.60	181.20	7,295.0	-2,520.0	460.4	2,557.0	2.14	0.30	-2.12
9,673.0	89.80	180.40	7,295.2	-2,552.0	460.0	2,588.7	2.58	0.63	-2.50
9,705.0	90.70	180.00	7,295.1	-2,584.0	459.8	2,620.4	3.08	2.81	-1.25

<b>Company:</b>	EOG Resources, Inc - RM	<b>Local Co-ordinate Reference:</b>	Well Randall Creek #4-32H
<b>Project:</b>	Weld County, CO	<b>TVD Reference:</b>	WELL @ 5370.0usft (SST #53)
<b>Site:</b>	Sec 32, T12N, R62W, 6th P.M.	<b>MD Reference:</b>	WELL @ 5370.0usft (SST #53)
<b>Well:</b>	Randall Creek #4-32H	<b>North Reference:</b>	True
<b>Wellbore:</b>	Wellbore #1	<b>Survey Calculation Method:</b>	Minimum Curvature
<b>Design:</b>	Wellbore #1	<b>Database:</b>	EDM 5000.1 Single User Db

### Survey

Measured Depth (usft)	Inclination (°)	Azimuth (°)	Vertical Depth (usft)	+N/-S (usft)	+E/-W (usft)	Vertical Section (usft)	Dogleg Rate (°/100usft)	Build Rate (°/100usft)	Turn Rate (°/100usft)
9,737.0	91.30	179.50	7,294.5	-2,616.0	460.0	2,652.2	2.44	1.88	-1.56
9,769.0	91.00	179.80	7,293.9	-2,648.0	460.2	2,684.0	1.33	-0.94	0.94
9,801.0	91.20	179.80	7,293.3	-2,680.0	460.3	2,715.8	0.63	0.63	0.00
9,833.0	91.30	180.20	7,292.6	-2,712.0	460.3	2,747.5	1.29	0.31	1.25
9,864.0	90.00	180.30	7,292.2	-2,743.0	460.2	2,778.3	4.21	-4.19	0.32
9,895.0	89.80	181.10	7,292.3	-2,774.0	459.8	2,809.0	2.66	-0.65	2.58
9,926.0	89.70	180.20	7,292.4	-2,805.0	459.4	2,839.8	2.92	-0.32	-2.90
9,958.0	89.70	179.50	7,292.6	-2,837.0	459.5	2,871.5	2.19	0.00	-2.19
10,021.0	89.60	180.30	7,292.9	-2,900.0	459.6	2,934.1	1.28	-0.16	1.27
10,085.0	89.80	180.20	7,293.3	-2,964.0	459.3	2,997.6	0.35	0.31	-0.16
10,148.0	89.80	178.80	7,293.5	-3,027.0	459.9	3,060.2	2.22	0.00	-2.22
10,211.0	89.80	178.20	7,293.7	-3,090.0	461.5	3,123.0	0.95	0.00	-0.95
10,275.0	90.40	179.00	7,293.6	-3,153.9	463.1	3,186.7	1.56	0.94	1.25
10,339.0	90.90	179.00	7,292.9	-3,217.9	464.2	3,250.3	0.78	0.78	0.00
10,370.0	90.70	178.20	7,292.5	-3,248.9	465.0	3,281.2	2.66	-0.65	-2.58
10,402.0	90.20	177.50	7,292.2	-3,280.9	466.2	3,313.1	2.69	-1.56	-2.19
10,434.0	89.50	177.80	7,292.3	-3,312.9	467.5	3,345.0	2.38	-2.19	0.94
10,497.0	89.80	178.00	7,292.7	-3,375.8	469.8	3,407.8	0.57	0.48	0.32
10,560.0	89.30	178.10	7,293.2	-3,438.8	471.9	3,470.5	0.81	-0.79	0.16
10,592.0	90.50	179.70	7,293.2	-3,470.8	472.6	3,502.4	6.25	3.75	5.00
10,624.0	90.20	178.50	7,293.0	-3,502.8	473.1	3,534.2	3.87	-0.94	-3.75
10,656.0	88.80	177.10	7,293.3	-3,534.7	474.3	3,566.1	6.19	-4.38	-4.38
10,719.0	88.90	177.80	7,294.6	-3,597.7	477.1	3,628.9	1.12	0.16	1.11
10,782.0	89.60	177.70	7,295.4	-3,660.6	479.6	3,691.7	1.12	1.11	-0.16
10,845.0	89.10	176.80	7,296.1	-3,723.5	482.6	3,754.5	1.63	-0.79	-1.43
10,908.0	90.50	177.50	7,296.3	-3,786.5	485.7	3,817.4	2.48	2.22	1.11
10,940.0	90.70	177.90	7,296.0	-3,818.4	487.0	3,849.3	1.40	0.63	1.25
10,971.0	89.90	177.70	7,295.8	-3,849.4	488.2	3,880.2	2.66	-2.58	-0.65
11,036.0	90.40	177.40	7,295.7	-3,914.3	491.0	3,945.0	0.90	0.77	-0.46
11,100.0	89.80	177.60	7,295.5	-3,978.3	493.8	4,008.8	0.99	-0.94	0.31
11,164.0	90.00	179.00	7,295.7	-4,042.3	495.7	4,072.5	2.21	0.31	2.19
11,226.0	89.50	179.90	7,295.9	-4,104.3	496.3	4,134.1	1.66	-0.81	1.45
11,246.0	90.10	179.80	7,296.0	-4,124.3	496.3	4,154.0	3.04	3.00	-0.50
TD									
11,295.0	90.10	179.80	7,295.9	-4,173.2	496.5	4,202.7	0.00	0.00	0.00

### Survey Annotations

Measured Depth (usft)	Vertical Depth (usft)	Local Coordinates		Comment
		+N/-S (usft)	+E/-W (usft)	
1,409.0	1,409.0	0.0	0.0	Tie-In
7,072.0	7,051.1	-99.9	57.1	Crossed Hard-Line @ 7072' MD
11,295.0	7,295.9	-4,173.2	496.5	TD



<b>Company:</b>	EOG Resources, Inc - RM	<b>Local Co-ordinate Reference:</b>	Well Randall Creek #4-32H
<b>Project:</b>	Weld County, CO	<b>TVD Reference:</b>	WELL @ 5370.0usft (SST #53)
<b>Site:</b>	Sec 32, T12N, R62W, 6th P.M.	<b>MD Reference:</b>	WELL @ 5370.0usft (SST #53)
<b>Well:</b>	Randall Creek #4-32H	<b>North Reference:</b>	True
<b>Wellbore:</b>	Wellbore #1	<b>Survey Calculation Method:</b>	Minimum Curvature
<b>Design:</b>	Wellbore #1	<b>Database:</b>	EDM 5000.1 Single User Db

Checked By: _____	Approved By: _____	Date: _____
-------------------	--------------------	-------------



---

---

## Survey Certification Sheet

EOG Resources Inc.  
Company

RM-11123  
Job Number

3/25/11  
Date

Sec32, T12N, R26W, 6PM  
Lease

Randall Creek #4-32H  
Well Name

Weld County, CO  
County & State

Surveyed from a depth of: 1409 feet to 11295 feet MD

Type of Survey: MWD

Directional Supervisor/Surveyor: Bill Delahunt

The data and calculations for this survey have been checked by me and conform to the standards and procedures set forth by **The Directional Drilling Company (DDC)**. This report represents a true and correct Directional survey of this well based on the original data obtained at the well site. Wellbore Coordinates are calculated using minimum curvature.

Digitally signed by  
Larry Wright  
DN: cn=Larry Wright,  
o, ou,  
email=larryw@directio  
naldrillers.com, c=US  
Date: 2011.04.04  
14:35:15 -05'00'

Larry Wright  
MWD General Manager