



EOG Resources, Inc - RM

Weld County, CO

Sec. 26, T11N, R63W, 6th P.M

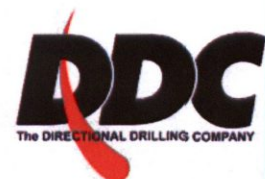
Critter Creek #30-26H

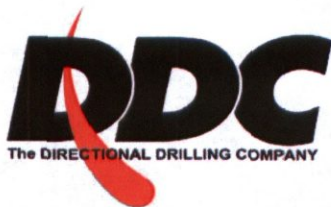
Wellbore #1

Survey: Critter Creek #30-26H - MWD Surveys

DDC Survey Report

22 November, 2010





Survey Certification Sheet

EOG Resources, Inc.
Company

RM-10533
Job Number

11/23/2010
Date

Sec. 26, T11N, R63W
Lease

Critter Creek #30-26H
Well Name

Weld County, CO
County & State

Surveyed from a depth of: 1208 feet to 12282 feet MD

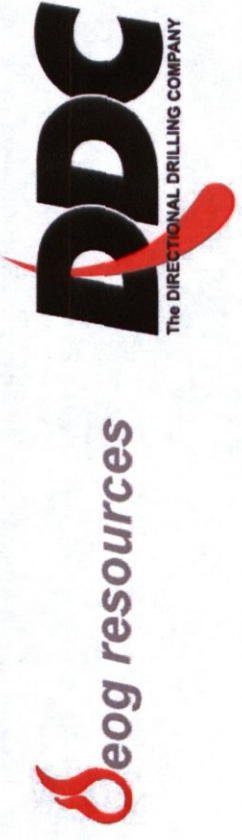
Type of Survey: MWD

Directional Supervisor/Surveyor: William Delahunt

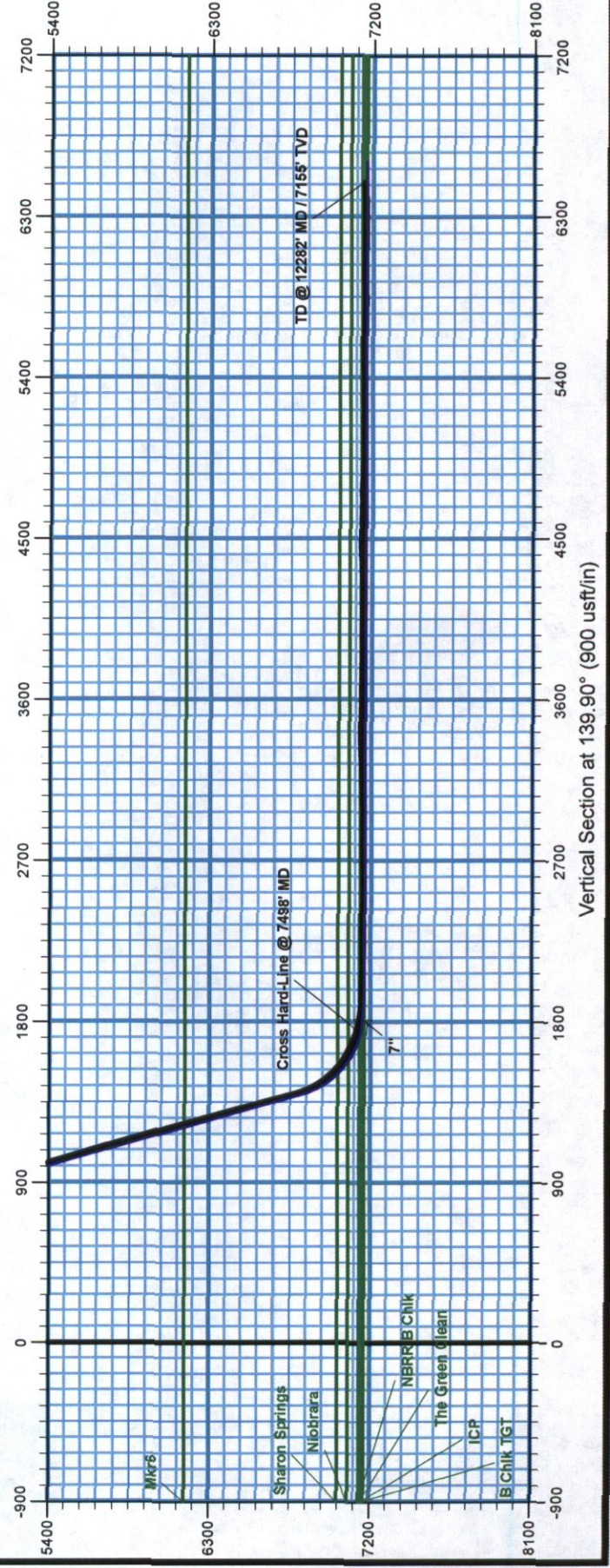
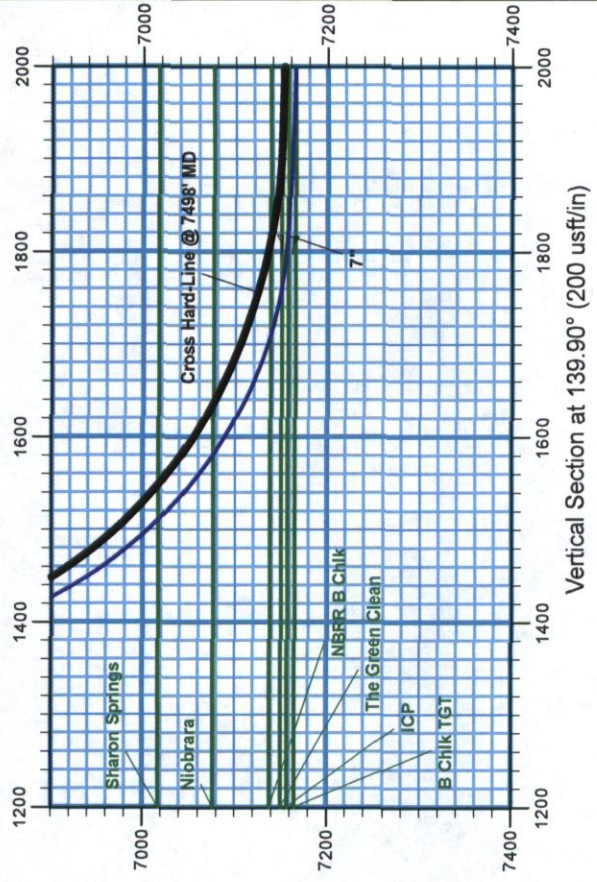
The data and calculations for this survey have been checked by me and conform to the standards and procedures set forth by **The Directional Drilling Company (DDC)**. This report represents a true and correct Directional survey of this well based on the original data obtained at the well site. Wellbore Coordinates are calculated using minimum curvature.

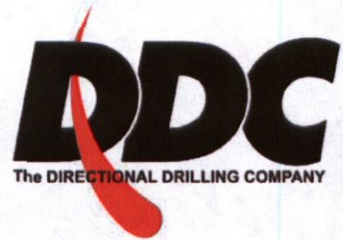
Digitally signed by Larry
Wright
DN: cn=Larry Wright, o, ou,
email=larryw@directional
drillers.com, c=US
Date: 2010.11.23 11:04:32
-06'00'

Larry Wright
MWD General Manager

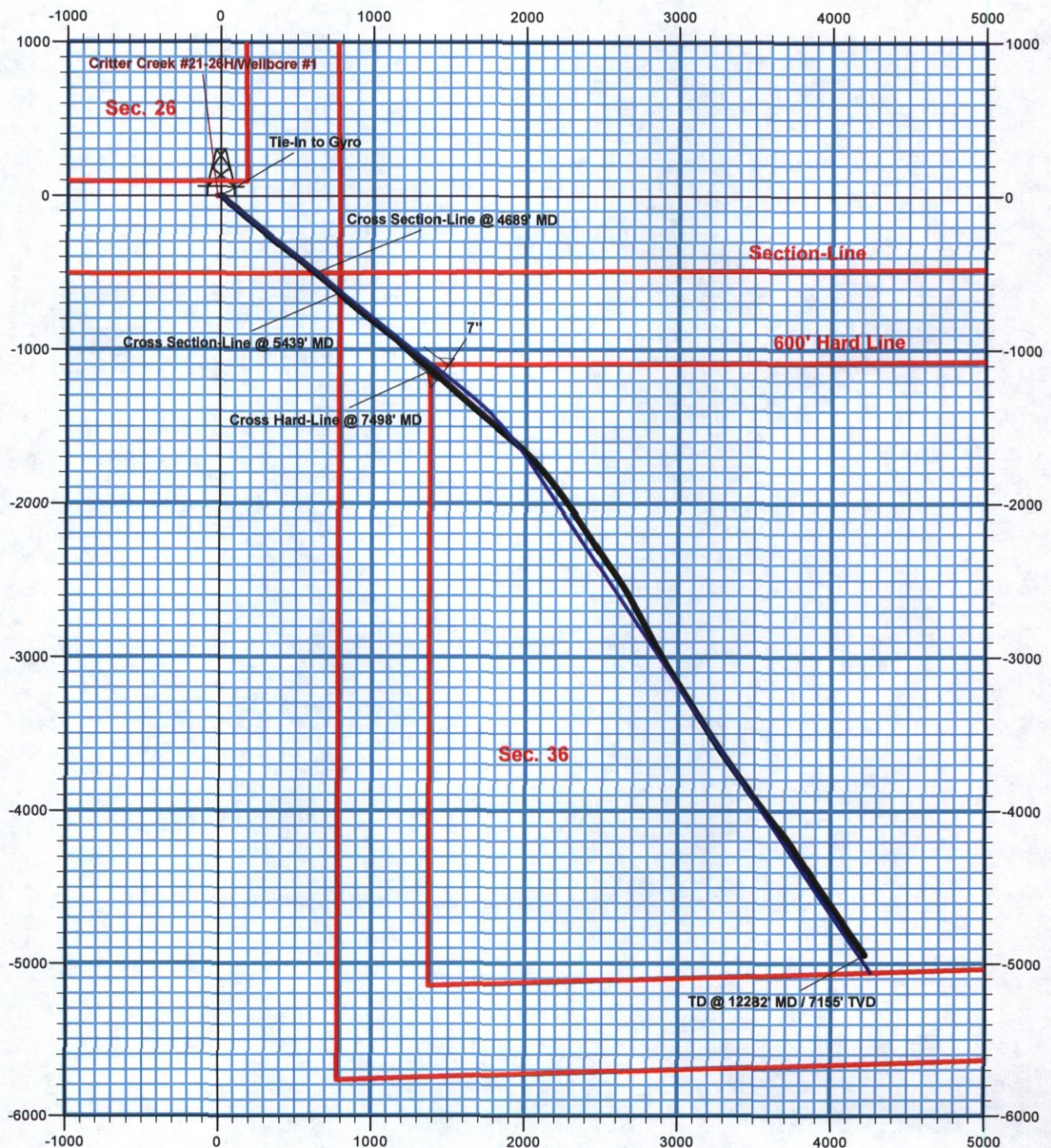


Weld County, CO
Sec. 26, T11N, R63W, 6th P.M
Crittter Creek #30-26H
Wellbore #1
Pre-Drill Rev 1



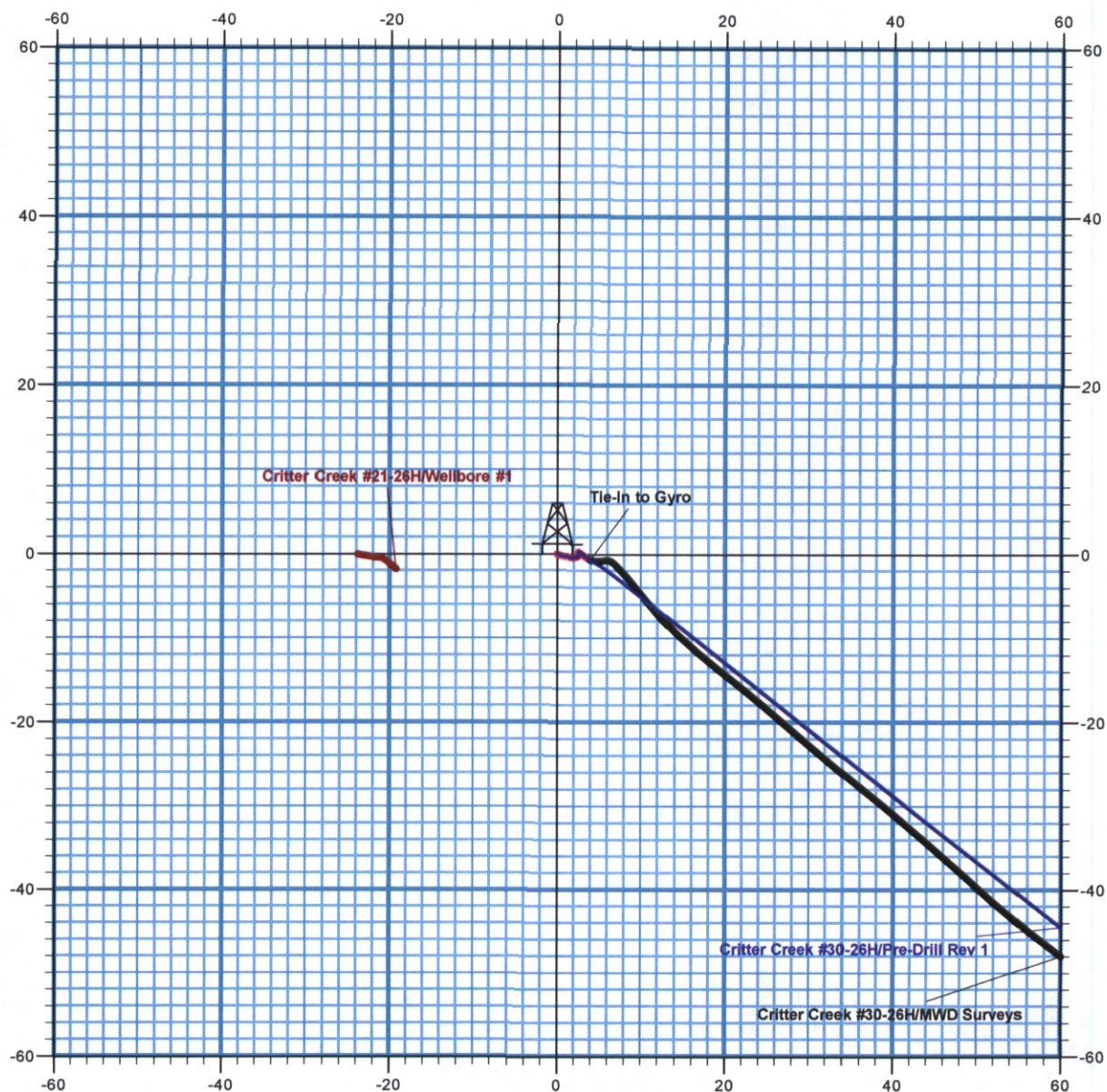


Weld County, CO
Sec. 26, T11N, R63W, 6th P.M
Critter Creek #30-26H
Wellbore #1
Pre-Drill Rev 1





Weld County, CO
Sec. 26, T11N, R63W, 6th P.M
Crittter Creek #30-26H
Wellbore #1
Pre-Drill Rev 1



Company:	EOG Resources, Inc - RM	Local Co-ordinate Reference:	Well Critter Creek #30-26H
Project:	Weld County, CO	TVD Reference:	WELL @ 5184.0usft (SST #53)
Site:	Sec. 26, T11N, R63W, 6th P.M	MD Reference:	WELL @ 5184.0usft (SST #53)
Well:	Critter Creek #30-26H	North Reference:	True
Wellbore:	Wellbore #1	Survey Calculation Method:	Minimum Curvature
Design:	Wellbore #1	Database:	EDM 5000.1 Single User Db

Project	Weld County, CO		
Map System:	US State Plane 1927 (Exact solution)	System Datum:	Mean Sea Level
Geo Datum:	NAD 1927 (NADCON CONUS)		
Map Zone:	Colorado North 501		

Site	Sec. 26, T11N, R63W, 6th P.M		
Site Position:		Northing:	568,137.98 usft
From:	Lat/Long	Easting:	2,306,229.11 usft
Position Uncertainty:	0.0 usft	Slot Radius:	13-3/16 "
		Latitude:	40° 53' 15.680 N
		Longitude:	104° 23' 33.030 W
		Grid Convergence:	0.72 °

Well	Critter Creek #30-26H		
Well Position	+N/-S	0.0 usft	Northing: 568,137.97 usft
	+E/-W	0.0 usft	Easting: 2,306,229.11 usft
Position Uncertainty	0.0 usft	Wellhead Elevation:	usft
		Latitude:	40° 53' 15.680 N
		Longitude:	104° 23' 33.030 W
		Ground Level:	5,161.0 usft

Wellbore	Wellbore #1				
Magnetics	Model Name	Sample Date	Declination (°)	Dip Angle (°)	Field Strength (nT)
	IGRF2010	10/29/2010	8.79	67.53	53,488

Design	Wellbore #1				
Audit Notes:					
Version:	1.0	Phase:	ACTUAL	Tie On Depth:	0.0
Vertical Section:	Depth From (TVD) (usft)	+N/-S (usft)	+E/-W (usft)	Direction (°)	
	0.0	0.0	0.0	139.90	

Survey Program	Date	11/22/2010			
From (usft)	To (usft)	Survey (Wellbore)	Tool Name	Description	
100.0	1,208.0	Client Provided - Gyro Surveys (Wellbore	Good_gyro	Good Gyro	
1,306.0	12,282.0	Critter Creek #30-26H - MWD Surveys (W	MWD default	MWD - Standard	

Survey										
Measured Depth (usft)	Inclination (°)	Azimuth (°)	Vertical Depth (usft)	+N/-S (usft)	+E/-W (usft)	Vertical Section (usft)	Dogleg Rate (°/100usft)	Build Rate (°/100usft)	Turn Rate (°/100usft)	
Tie-In to Gyro										
1,208.0	0.31	120.79	1,208.0	-0.7	3.9	3.1	0.00	0.00	0.00	
1,306.0	0.50	85.40	1,306.0	-0.8	4.6	3.6	0.31	0.19	-36.12	
1,337.0	0.50	88.60	1,337.0	-0.8	4.9	3.7	0.09	0.00	10.32	
1,367.0	0.60	88.10	1,367.0	-0.8	5.2	3.9	0.33	0.33	-1.67	
1,397.0	0.60	83.50	1,397.0	-0.7	5.5	4.1	0.16	0.00	-15.33	
1,428.0	0.60	86.70	1,428.0	-0.7	5.8	4.3	0.11	0.00	10.32	
1,459.0	0.80	88.60	1,459.0	-0.7	6.2	4.5	0.65	0.65	6.13	
1,490.0	2.00	133.80	1,490.0	-1.1	6.8	5.2	4.98	3.87	145.81	
1,522.0	3.00	137.30	1,521.9	-2.1	7.8	6.6	3.16	3.13	10.94	

Company:	EOG Resources, Inc - RM	Local Co-ordinate Reference:	Well Critter Creek #30-26H
Project:	Weld County, CO	TVD Reference:	WELL @ 5184.0usft (SST #53)
Site:	Sec. 26, T11N, R63W, 6th P.M	MD Reference:	WELL @ 5184.0usft (SST #53)
Well:	Critter Creek #30-26H	North Reference:	True
Wellbore:	Wellbore #1	Survey Calculation Method:	Minimum Curvature
Design:	Wellbore #1	Database:	EDM 5000.1 Single User Db

Survey									
Measured Depth (usft)	Inclination (°)	Azimuth (°)	Vertical Depth (usft)	+N/-S (usft)	+E/-W (usft)	Vertical Section (usft)	Dogleg Rate (°/100usft)	Build Rate (°/100usft)	Turn Rate (°/100usft)
1,554.0	4.20	140.40	1,553.9	-3.6	9.1	8.6	3.80	3.75	9.69
1,586.0	4.80	140.30	1,585.8	-5.5	10.7	11.1	1.88	1.88	-0.31
1,617.0	4.90	139.60	1,616.7	-7.5	12.4	13.7	0.37	0.32	-2.26
1,649.0	5.40	132.90	1,648.5	-9.6	14.3	16.6	2.44	1.56	-20.94
1,681.0	5.80	128.90	1,680.4	-11.6	16.7	19.7	1.75	1.25	-12.50
1,713.0	5.70	128.90	1,712.2	-13.6	19.2	22.8	0.31	-0.31	0.00
1,744.0	5.80	128.10	1,743.1	-15.6	21.6	25.8	0.41	0.32	-2.58
1,776.0	6.30	130.10	1,774.9	-17.7	24.2	29.2	1.70	1.56	6.25
1,808.0	6.90	131.00	1,806.7	-20.1	27.0	32.8	1.90	1.88	2.81
1,840.0	7.60	130.10	1,838.4	-22.7	30.1	36.8	2.22	2.19	-2.81
1,872.0	7.80	129.40	1,870.1	-25.5	33.4	41.0	0.69	0.63	-2.19
1,903.0	7.70	128.30	1,900.8	-28.1	36.7	45.1	0.58	-0.32	-3.55
1,935.0	8.40	129.70	1,932.5	-30.9	40.1	49.5	2.27	2.19	4.38
1,967.0	9.00	131.70	1,964.2	-34.1	43.8	54.3	2.10	1.88	6.25
1,999.0	9.90	132.20	1,995.7	-37.6	47.7	59.5	2.82	2.81	1.56
2,030.0	10.30	132.50	2,026.2	-41.2	51.7	64.9	1.30	1.29	0.97
2,062.0	10.60	128.30	2,057.7	-45.0	56.2	70.6	2.56	0.94	-13.13
2,094.0	10.80	126.20	2,089.2	-48.6	60.9	76.4	1.37	0.63	-6.56
2,126.0	11.30	124.80	2,120.6	-52.1	65.9	82.3	1.77	1.56	-4.38
2,157.0	11.70	124.40	2,150.9	-55.7	71.0	88.3	1.32	1.29	-1.29
2,189.0	12.50	123.60	2,182.2	-59.4	76.5	94.7	2.55	2.50	-2.50
2,221.0	12.60	123.80	2,213.5	-63.3	82.3	101.4	0.34	0.31	0.63
2,253.0	13.30	124.30	2,244.7	-67.3	88.3	108.3	2.22	2.19	1.56
2,285.0	14.10	128.00	2,275.7	-71.8	94.4	115.7	3.71	2.50	11.56
2,316.0	14.80	130.80	2,305.8	-76.7	100.3	123.3	3.19	2.26	9.03
2,348.0	14.90	131.80	2,336.7	-82.1	106.5	131.4	0.86	0.31	3.13
2,380.0	15.60	134.60	2,367.6	-87.8	112.6	139.7	3.17	2.19	8.75
2,412.0	16.70	133.90	2,398.3	-94.1	119.0	148.6	3.49	3.44	-2.19
2,443.0	16.80	132.90	2,428.0	-100.2	125.5	157.5	0.98	0.32	-3.23
2,475.0	16.50	131.50	2,458.6	-106.4	132.3	166.6	1.57	-0.94	-4.38
2,507.0	16.30	130.40	2,489.3	-112.3	139.1	175.5	1.15	-0.63	-3.44
2,538.0	15.80	129.90	2,519.1	-117.8	145.7	183.9	1.67	-1.61	-1.61
2,570.0	15.60	129.60	2,549.9	-123.3	152.3	192.5	0.67	-0.63	-0.94
2,602.0	16.30	129.60	2,580.7	-128.9	159.1	201.1	2.19	2.19	0.00
2,634.0	16.30	129.60	2,611.4	-134.7	166.0	209.9	0.00	0.00	0.00
2,665.0	15.90	128.90	2,641.2	-140.1	172.7	218.4	1.43	-1.29	-2.26
2,697.0	15.60	128.50	2,672.0	-145.5	179.5	226.9	1.00	-0.94	-1.25
2,728.0	15.30	128.00	2,701.9	-150.6	185.9	235.0	1.06	-0.97	-1.61
2,760.0	16.10	128.70	2,732.7	-156.0	192.7	243.5	2.57	2.50	2.19
2,792.0	16.40	129.00	2,763.4	-161.6	199.7	252.3	0.97	0.94	0.94
2,824.0	16.40	129.40	2,794.1	-167.4	206.7	261.2	0.35	0.00	1.25
2,856.0	16.10	128.90	2,824.8	-173.0	213.6	269.9	1.03	-0.94	-1.56
2,887.0	15.70	128.30	2,854.7	-178.3	220.3	278.3	1.40	-1.29	-1.94

Company:	EOG Resources, Inc - RM	Local Co-ordinate Reference:	Well Critter Creek #30-26H
Project:	Weld County, CO	TVD Reference:	WELL @ 5184.0usft (SST #53)
Site:	Sec. 26, T11N, R63W, 6th P.M	MD Reference:	WELL @ 5184.0usft (SST #53)
Well:	Critter Creek #30-26H	North Reference:	True
Wellbore:	Wellbore #1	Survey Calculation Method:	Minimum Curvature
Design:	Wellbore #1	Database:	EDM 5000.1 Single User Db

Survey									
Measured Depth (usft)	Inclination (°)	Azimuth (°)	Vertical Depth (usft)	+N/-S (usft)	+E/-W (usft)	Vertical Section (usft)	Dogleg Rate (°/100usft)	Build Rate (°/100usft)	Turn Rate (°/100usft)
2,919.0	16.30	128.30	2,885.4	-183.8	227.2	286.9	1.88	1.88	0.00
2,951.0	16.30	128.30	2,916.1	-189.3	234.3	295.7	0.00	0.00	0.00
2,983.0	16.10	128.10	2,946.9	-194.9	241.3	304.5	0.65	-0.63	-0.63
3,015.0	15.80	128.10	2,977.6	-200.3	248.2	313.1	0.94	-0.94	0.00
3,046.0	17.00	128.30	3,007.4	-205.7	255.1	321.6	3.88	3.87	0.65
3,110.0	17.00	129.00	3,068.6	-217.4	269.7	340.0	0.32	0.00	1.09
3,173.0	16.40	128.90	3,128.9	-228.8	283.8	357.8	0.95	-0.95	-0.16
3,237.0	16.90	130.30	3,190.2	-240.5	297.9	375.8	1.00	0.78	2.19
3,300.0	17.00	130.80	3,250.5	-252.4	311.8	393.9	0.28	0.16	0.79
3,364.0	16.40	130.40	3,311.8	-264.4	325.8	412.1	0.95	-0.94	-0.63
3,427.0	17.30	129.40	3,372.1	-276.1	339.8	430.1	1.50	1.43	-1.59
3,491.0	17.80	129.00	3,433.1	-288.3	354.8	449.0	0.80	0.78	-0.63
3,554.0	17.60	128.90	3,493.1	-300.3	369.7	467.8	0.32	-0.32	-0.16
3,618.0	17.50	129.00	3,554.1	-312.4	384.7	486.8	0.16	-0.16	0.16
3,680.0	17.50	128.90	3,613.3	-324.2	399.2	505.1	0.05	0.00	-0.16
3,744.0	17.10	129.40	3,674.4	-336.2	413.9	523.8	0.67	-0.63	0.78
3,808.0	17.10	127.80	3,735.5	-347.9	428.6	542.2	0.74	0.00	-2.50
3,871.0	17.00	125.50	3,795.8	-358.9	443.5	560.2	1.08	-0.16	-3.65
3,903.0	16.60	125.70	3,826.4	-364.3	451.0	569.2	1.26	-1.25	0.63
3,966.0	16.40	128.00	3,886.8	-375.1	465.3	586.6	1.08	-0.32	3.65
4,030.0	16.20	127.80	3,948.2	-386.1	479.5	604.2	0.32	-0.31	-0.31
4,093.0	15.20	126.60	4,008.9	-396.4	493.0	620.8	1.67	-1.59	-1.90
4,157.0	16.00	127.40	4,070.5	-406.8	506.8	637.6	1.29	1.25	1.25
4,220.0	16.80	128.70	4,131.0	-417.7	520.8	655.0	1.40	1.27	2.06
4,283.0	16.60	129.00	4,191.3	-429.1	534.9	672.7	0.35	-0.32	0.48
4,347.0	16.70	128.70	4,252.6	-440.6	549.2	690.7	0.21	0.16	-0.47
4,410.0	16.70	128.70	4,313.0	-451.9	563.3	708.5	0.00	0.00	0.00
4,441.0	16.80	128.90	4,342.7	-457.5	570.3	717.3	0.37	0.32	0.65
4,505.0	16.20	129.40	4,404.0	-469.0	584.4	735.1	0.96	-0.94	0.78
4,568.0	15.80	130.10	4,464.6	-480.1	597.7	752.2	0.70	-0.63	1.11
4,632.0	15.30	130.30	4,526.2	-491.2	610.8	769.1	0.79	-0.78	0.31
Cross Section-Line @ 4689' MD									
4,688.8	15.12	129.95	4,581.1	-500.8	622.2	783.8	0.35	-0.31	-0.62
4,696.0	15.10	129.90	4,588.0	-502.0	623.6	785.7	0.35	-0.31	-0.63
4,759.0	14.50	128.50	4,648.9	-512.1	636.1	801.5	1.11	-0.95	-2.22
4,823.0	15.80	127.10	4,710.7	-522.4	649.3	817.8	2.11	2.03	-2.19
4,854.0	16.40	128.10	4,740.5	-527.6	656.1	826.2	2.13	1.94	3.23
4,918.0	15.90	128.70	4,801.9	-538.7	670.1	843.7	0.82	-0.78	0.94
4,981.0	16.40	128.30	4,862.5	-549.6	683.8	860.9	0.81	0.79	-0.63
5,045.0	16.50	128.90	4,923.8	-560.9	698.0	878.6	0.31	0.16	0.94
5,108.0	15.90	128.90	4,984.3	-571.9	711.7	895.9	0.95	-0.95	0.00
5,172.0	16.30	129.70	5,045.8	-583.2	725.4	913.3	0.71	0.63	1.25
5,235.0	16.10	130.40	5,106.3	-594.5	738.8	930.6	0.44	-0.32	1.11
5,298.0	15.60	130.10	5,166.9	-605.6	752.0	947.6	0.80	-0.79	-0.48

Company:	EOG Resources, Inc - RM	Local Co-ordinate Reference:	Well Critter Creek #30-26H
Project:	Weld County, CO	TVD Reference:	WELL @ 5184.0usft (SST #53)
Site:	Sec. 26, T11N, R63W, 6th P.M	MD Reference:	WELL @ 5184.0usft (SST #53)
Well:	Critter Creek #30-26H	North Reference:	True
Wellbore:	Wellbore #1	Survey Calculation Method:	Minimum Curvature
Design:	Wellbore #1	Database:	EDM 5000.1 Single User Db

Survey

Measured Depth (usft)	Inclination (°)	Azimuth (°)	Vertical Depth (usft)	+N/-S (usft)	+E/-W (usft)	Vertical Section (usft)	Dogleg Rate (°/100usft)	Build Rate (°/100usft)	Turn Rate (°/100usft)
5,362.0	15.90	131.10	5,228.5	-616.9	765.2	964.7	0.63	0.47	1.56
5,394.0	16.20	131.10	5,259.3	-622.7	771.8	973.5	0.94	0.94	0.00
Cross Section-Line @ 5439' MD									
5,439.0	15.77	131.24	5,302.5	-630.9	781.2	985.7	0.96	-0.95	0.31
5,457.0	15.60	131.30	5,319.9	-634.1	784.8	990.5	0.96	-0.95	0.33
5,521.0	15.70	132.00	5,381.5	-645.6	797.7	1,007.6	0.33	0.16	1.09
5,552.0	15.80	132.70	5,411.3	-651.2	803.9	1,016.0	0.69	0.32	2.26
5,616.0	16.30	132.00	5,472.8	-663.2	817.0	1,033.5	0.84	0.78	-1.09
5,680.0	16.20	132.20	5,534.3	-675.2	830.3	1,051.3	0.18	-0.16	0.31
5,743.0	16.40	131.70	5,594.7	-687.0	843.5	1,068.8	0.39	0.32	-0.79
5,807.0	16.20	131.10	5,656.2	-698.9	856.9	1,086.5	0.41	-0.31	-0.94
5,870.0	15.70	131.10	5,716.8	-710.2	870.0	1,103.6	0.79	-0.79	0.00
5,934.0	15.60	130.40	5,778.4	-721.5	883.0	1,120.7	0.33	-0.16	-1.09
5,965.0	16.20	129.40	5,808.2	-727.0	889.6	1,129.1	2.13	1.94	-3.23
6,029.0	15.80	127.80	5,869.7	-738.0	903.3	1,146.4	0.93	-0.63	-2.50
6,061.0	15.60	127.30	5,900.5	-743.2	910.2	1,154.8	0.75	-0.63	-1.56
6,092.0	16.40	127.10	5,930.3	-748.4	917.0	1,163.1	2.59	2.58	-0.65
6,124.0	16.90	126.90	5,961.0	-753.9	924.3	1,172.1	1.57	1.56	-0.63
6,156.0	16.80	128.90	5,991.6	-759.6	931.7	1,181.2	1.84	-0.31	6.25
6,188.0	16.50	128.90	6,022.3	-765.4	938.8	1,190.2	0.94	-0.94	0.00
6,219.0	16.10	128.70	6,052.0	-770.8	945.6	1,198.7	1.30	-1.29	-0.65
6,250.0	15.80	128.30	6,081.8	-776.1	952.2	1,207.0	1.03	-0.97	-1.29
6,282.0	15.70	128.10	6,112.6	-781.5	959.1	1,215.5	0.36	-0.31	-0.63
6,313.0	15.40	128.30	6,142.5	-786.6	965.6	1,223.7	0.98	-0.97	0.65
6,345.0	15.60	128.30	6,173.3	-791.9	972.3	1,232.1	0.63	0.63	0.00
6,377.0	15.60	128.50	6,204.1	-797.3	979.1	1,240.5	0.17	0.00	0.63
6,440.0	15.40	128.70	6,264.9	-807.8	992.2	1,257.0	0.33	-0.32	0.32
6,504.0	15.80	128.30	6,326.5	-818.5	1,005.7	1,273.9	0.65	0.63	-0.63
6,535.0	16.40	127.40	6,356.3	-823.8	1,012.5	1,282.3	2.10	1.94	-2.90
6,599.0	16.00	126.60	6,417.7	-834.5	1,026.7	1,299.7	0.72	-0.63	-1.25
6,662.0	15.60	126.40	6,478.4	-844.7	1,040.5	1,316.4	0.64	-0.63	-0.32
6,694.0	15.20	125.90	6,509.2	-849.7	1,047.4	1,324.6	1.32	-1.25	-1.56
6,757.0	15.80	127.10	6,569.9	-859.8	1,060.9	1,341.0	1.08	0.95	1.90
6,789.0	16.40	128.10	6,600.7	-865.2	1,067.9	1,349.7	2.07	1.88	3.13
6,852.0	15.60	128.10	6,661.2	-875.9	1,081.6	1,366.7	1.27	-1.27	0.00
6,916.0	15.60	128.00	6,722.9	-886.5	1,095.2	1,383.5	0.04	0.00	-0.16
6,945.0	15.80	127.30	6,750.8	-891.3	1,101.4	1,391.2	0.95	0.69	-2.41
6,977.0	15.90	126.40	6,781.6	-896.5	1,108.4	1,399.7	0.83	0.31	-2.81
7,009.0	19.00	125.50	6,812.1	-902.2	1,116.1	1,409.0	9.72	9.69	-2.81
7,040.0	22.90	126.70	6,841.0	-908.7	1,125.1	1,419.8	12.66	12.58	3.87
7,072.0	26.60	128.10	6,870.1	-916.8	1,135.7	1,432.9	11.71	11.56	4.38
7,104.0	30.50	129.00	6,898.2	-926.4	1,147.7	1,447.8	12.26	12.19	2.81
7,136.0	34.70	131.00	6,925.1	-937.5	1,160.9	1,464.8	13.55	13.13	6.25

Company:	EOG Resources, Inc - RM	Local Co-ordinate Reference:	Well Critter Creek #30-26H
Project:	Weld County, CO	TVD Reference:	WELL @ 5184.0usft (SST #53)
Site:	Sec. 26, T11N, R63W, 6th P.M	MD Reference:	WELL @ 5184.0usft (SST #53)
Well:	Critter Creek #30-26H	North Reference:	True
Wellbore:	Wellbore #1	Survey Calculation Method:	Minimum Curvature
Design:	Wellbore #1	Database:	EDM 5000.1 Single User Db

Survey

Measured Depth (usft)	Inclination (°)	Azimuth (°)	Vertical Depth (usft)	+N/-S (usft)	+E/-W (usft)	Vertical Section (usft)	Dogleg Rate (°/100usft)	Build Rate (°/100usft)	Turn Rate (°/100usft)
7,167.0	39.00	132.50	6,949.9	-949.9	1,174.7	1,483.2	14.17	13.87	4.84
7,199.0	42.80	133.10	6,974.1	-964.1	1,190.1	1,504.0	11.94	11.88	1.88
7,231.0	46.40	133.10	6,996.9	-979.4	1,206.5	1,526.3	11.25	11.25	0.00
7,262.0	50.20	132.70	7,017.5	-995.2	1,223.4	1,549.3	12.30	12.26	-1.29
7,294.0	54.00	132.40	7,037.2	-1,012.3	1,242.0	1,574.3	11.90	11.88	-0.94
7,326.0	58.00	132.20	7,055.1	-1,030.1	1,261.7	1,600.6	12.51	12.50	-0.63
7,357.0	61.40	131.70	7,070.7	-1,048.0	1,281.6	1,627.1	11.06	10.97	-1.61
7,389.0	64.50	131.10	7,085.3	-1,066.8	1,302.9	1,655.3	9.83	9.69	-1.88
7,421.0	67.10	131.00	7,098.4	-1,086.0	1,325.0	1,684.1	8.13	8.13	-0.31
7,452.0	70.00	131.10	7,109.7	-1,105.0	1,346.7	1,712.7	9.36	9.35	0.32
7,483.0	72.60	130.40	7,119.7	-1,124.1	1,369.0	1,741.6	8.66	8.39	-2.26
Cross Hard-Line @ 7498' MD									
7,498.4	73.80	130.40	7,124.1	-1,133.7	1,380.2	1,756.2	7.81	7.81	0.00
7,515.0	75.10	130.40	7,128.6	-1,144.0	1,392.4	1,772.0	7.81	7.81	0.00
7,547.0	77.70	130.40	7,136.1	-1,164.2	1,416.0	1,802.6	8.13	8.13	0.00
7,578.0	80.50	130.40	7,141.9	-1,183.9	1,439.2	1,832.6	9.03	9.03	0.00
7,610.0	83.70	130.10	7,146.3	-1,204.4	1,463.4	1,863.9	10.04	10.00	-0.94
7,624.0	85.40	130.10	7,147.7	-1,213.4	1,474.1	1,877.6	12.14	12.14	0.00
7,671.0	88.10	132.90	7,150.3	-1,244.5	1,509.2	1,924.0	8.27	5.74	5.96
7,703.0	88.00	131.80	7,151.4	-1,266.0	1,532.8	1,955.7	3.45	-0.31	-3.44
7,734.0	88.00	131.10	7,152.5	-1,286.5	1,556.1	1,986.4	2.26	0.00	-2.26
7,766.0	87.80	131.00	7,153.7	-1,307.5	1,580.2	2,018.0	0.70	-0.63	-0.31
7,798.0	88.00	131.10	7,154.8	-1,328.5	1,604.3	2,049.6	0.70	0.63	0.31
7,830.0	88.00	131.10	7,156.0	-1,349.5	1,628.4	2,081.2	0.00	0.00	0.00
7,861.0	89.60	131.00	7,156.6	-1,369.9	1,651.8	2,111.8	5.17	5.16	-0.32
7,893.0	90.10	129.90	7,156.7	-1,390.7	1,676.1	2,143.4	3.78	1.56	-3.44
7,924.0	90.20	129.70	7,156.6	-1,410.5	1,699.9	2,173.9	0.72	0.32	-0.65
7,956.0	90.10	129.20	7,156.5	-1,430.8	1,724.6	2,205.4	1.59	-0.31	-1.56
7,988.0	90.10	129.20	7,156.5	-1,451.1	1,749.4	2,236.8	0.00	0.00	0.00
8,020.0	90.20	129.70	7,156.4	-1,471.4	1,774.2	2,268.3	1.59	0.31	1.56
8,052.0	90.30	130.30	7,156.3	-1,492.0	1,798.7	2,299.8	1.90	0.31	1.88
8,084.0	90.40	130.10	7,156.1	-1,512.6	1,823.1	2,331.3	0.70	0.31	-0.63
8,115.0	91.00	129.40	7,155.7	-1,532.4	1,846.9	2,361.8	2.97	1.94	-2.26
8,147.0	90.70	129.60	7,155.2	-1,552.8	1,871.6	2,393.3	1.13	-0.94	0.63
8,179.0	90.70	129.00	7,154.8	-1,573.1	1,896.4	2,424.8	1.87	0.00	-1.88
8,211.0	89.40	129.60	7,154.8	-1,593.3	1,921.2	2,456.2	4.47	-4.06	1.88
8,242.0	89.20	131.00	7,155.2	-1,613.4	1,944.8	2,486.8	4.56	-0.65	4.52
8,274.0	89.00	130.60	7,155.7	-1,634.3	1,969.0	2,518.4	1.40	-0.63	-1.25
8,306.0	89.10	133.10	7,156.2	-1,655.6	1,992.8	2,550.1	7.82	0.31	7.81
8,337.0	89.30	135.00	7,156.6	-1,677.2	2,015.1	2,580.9	6.16	0.65	6.13
8,364.0	89.60	136.10	7,156.9	-1,696.4	2,034.0	2,607.8	4.22	1.11	4.07
8,395.0	89.30	136.90	7,157.2	-1,718.9	2,055.4	2,638.8	2.76	-0.97	2.58
8,427.0	89.90	138.70	7,157.4	-1,742.6	2,076.9	2,670.7	5.93	1.88	5.63
8,459.0	91.30	139.20	7,157.1	-1,766.8	2,097.9	2,702.7	4.65	4.38	1.56

Company:	EOG Resources, Inc - RM	Local Co-ordinate Reference:	Well Critter Creek #30-26H
Project:	Weld County, CO	TVD Reference:	WELL @ 5184.0usft (SST #53)
Site:	Sec. 26, T11N, R63W, 6th P.M	MD Reference:	WELL @ 5184.0usft (SST #53)
Well:	Critter Creek #30-26H	North Reference:	True
Wellbore:	Wellbore #1	Survey Calculation Method:	Minimum Curvature
Design:	Wellbore #1	Database:	EDM 5000.1 Single User Db

Survey									
Measured Depth (usft)	Inclination (°)	Azimuth (°)	Vertical Depth (usft)	+N/-S (usft)	+E/-W (usft)	Vertical Section (usft)	Dogleg Rate (°/100usft)	Build Rate (°/100usft)	Turn Rate (°/100usft)
8,491.0	91.20	138.70	7,156.4	-1,790.9	2,118.9	2,734.7	1.59	-0.31	-1.56
8,522.0	91.70	141.00	7,155.6	-1,814.6	2,138.9	2,765.7	7.59	1.61	7.42
8,554.0	91.30	142.20	7,154.8	-1,839.6	2,158.7	2,797.7	3.95	-1.25	3.75
8,586.0	89.70	142.00	7,154.5	-1,864.9	2,178.4	2,829.6	5.04	-5.00	-0.63
8,617.0	89.70	142.90	7,154.6	-1,889.5	2,197.3	2,860.6	2.90	0.00	2.90
8,649.0	90.20	142.40	7,154.7	-1,914.9	2,216.7	2,892.6	2.21	1.56	-1.56
8,681.0	89.50	143.30	7,154.7	-1,940.4	2,236.0	2,924.5	3.56	-2.19	2.81
8,713.0	89.20	142.20	7,155.1	-1,965.9	2,255.4	2,956.5	3.56	-0.94	-3.44
8,744.0	89.60	145.00	7,155.4	-1,990.8	2,273.8	2,987.4	9.12	1.29	9.03
8,776.0	90.80	146.30	7,155.3	-2,017.3	2,291.8	3,019.3	5.53	3.75	4.06
8,808.0	91.50	146.60	7,154.7	-2,043.9	2,309.5	3,051.0	2.38	2.19	0.94
8,840.0	92.00	146.10	7,153.7	-2,070.5	2,327.2	3,082.8	2.21	1.56	-1.56
8,872.0	92.10	146.30	7,152.6	-2,097.1	2,345.0	3,114.6	0.70	0.31	0.63
8,905.0	92.20	145.00	7,151.3	-2,124.3	2,363.6	3,147.4	3.95	0.30	-3.94
8,938.0	92.60	144.70	7,149.9	-2,151.3	2,382.6	3,180.3	1.51	1.21	-0.91
8,969.0	92.20	145.90	7,148.6	-2,176.8	2,400.3	3,211.1	4.08	-1.29	3.87
9,001.0	91.80	147.30	7,147.5	-2,203.5	2,417.9	3,242.9	4.55	-1.25	4.38
9,034.0	91.70	147.50	7,146.5	-2,231.2	2,435.6	3,275.6	0.68	-0.30	0.61
9,066.0	91.90	147.10	7,145.5	-2,258.2	2,452.9	3,307.3	1.40	0.63	-1.25
9,099.0	90.20	146.60	7,144.9	-2,285.8	2,470.9	3,340.0	5.37	-5.15	-1.52
9,131.0	90.90	147.10	7,144.6	-2,312.6	2,488.4	3,371.8	2.69	2.19	1.56
9,164.0	90.80	145.60	7,144.1	-2,340.0	2,506.7	3,404.6	4.56	-0.30	-4.55
9,195.0	90.30	144.80	7,143.8	-2,365.5	2,524.4	3,435.5	3.04	-1.61	-2.58
9,227.0	90.20	145.40	7,143.7	-2,391.7	2,542.7	3,467.3	1.90	-0.31	1.88
9,258.0	89.00	145.00	7,143.9	-2,417.2	2,560.4	3,498.2	4.08	-3.87	-1.29
9,290.0	89.30	145.40	7,144.4	-2,443.5	2,578.7	3,530.1	1.56	0.94	1.25
9,321.0	89.60	145.00	7,144.7	-2,468.9	2,596.4	3,560.9	1.61	0.97	-1.29
9,353.0	89.00	145.90	7,145.1	-2,495.3	2,614.5	3,592.8	3.38	-1.88	2.81
9,385.0	89.00	145.90	7,145.6	-2,521.8	2,632.5	3,624.6	0.00	0.00	0.00
9,416.0	88.90	148.40	7,146.2	-2,547.8	2,649.3	3,655.3	8.07	-0.32	8.06
9,448.0	88.20	150.80	7,147.0	-2,575.4	2,665.5	3,686.9	7.81	-2.19	7.50
9,512.0	89.20	149.80	7,148.4	-2,631.0	2,697.2	3,749.8	2.21	1.56	-1.56
9,543.0	90.10	151.50	7,148.6	-2,658.0	2,712.3	3,780.2	6.20	2.90	5.48
9,575.0	89.70	150.60	7,148.7	-2,686.0	2,727.8	3,811.6	3.08	-1.25	-2.81
9,638.0	90.10	150.80	7,148.8	-2,740.9	2,758.7	3,873.5	0.71	0.63	0.32
9,702.0	90.10	151.70	7,148.7	-2,797.0	2,789.5	3,936.3	1.41	0.00	1.41
9,766.0	89.90	152.60	7,148.7	-2,853.6	2,819.3	3,998.8	1.44	-0.31	1.41
9,828.0	89.70	152.40	7,148.9	-2,908.6	2,848.0	4,059.3	0.46	-0.32	-0.32
9,892.0	89.20	149.10	7,149.5	-2,964.5	2,879.2	4,122.2	5.21	-0.78	-5.16
9,924.0	88.10	149.40	7,150.3	-2,991.9	2,895.6	4,153.7	3.56	-3.44	0.94
9,988.0	90.40	149.90	7,151.1	-3,047.2	2,927.9	4,216.8	3.68	3.59	0.78
10,051.0	92.90	149.20	7,149.3	-3,101.5	2,959.8	4,278.9	4.12	3.97	-1.11
10,114.0	92.20	146.60	7,146.5	-3,154.8	2,993.3	4,341.2	4.27	-1.11	-4.13

Company:	EOG Resources, Inc - RM	Local Co-ordinate Reference:	Well Critter Creek #30-26H
Project:	Weld County, CO	TVD Reference:	WELL @ 5184.0usft (SST #53)
Site:	Sec. 26, T11N, R63W, 6th P.M	MD Reference:	WELL @ 5184.0usft (SST #53)
Well:	Critter Creek #30-26H	North Reference:	True
Wellbore:	Wellbore #1	Survey Calculation Method:	Minimum Curvature
Design:	Wellbore #1	Database:	EDM 5000.1 Single User Db

Survey

Measured Depth (usft)	Inclination (°)	Azimuth (°)	Vertical Depth (usft)	+N/-S (usft)	+E/-W (usft)	Vertical Section (usft)	Dogleg Rate (°/100usft)	Build Rate (°/100usft)	Turn Rate (°/100usft)
10,146.0	92.60	146.30	7,145.2	-3,181.4	3,011.0	4,373.0	1.56	1.25	-0.94
10,177.0	91.50	148.20	7,144.0	-3,207.5	3,027.7	4,403.7	7.08	-3.55	6.13
10,209.0	90.00	146.90	7,143.6	-3,234.5	3,044.9	4,435.4	6.20	-4.69	-4.06
10,272.0	90.00	148.20	7,143.6	-3,287.6	3,078.7	4,497.8	2.06	0.00	2.06
10,303.0	90.80	149.10	7,143.4	-3,314.1	3,094.8	4,528.5	3.88	2.58	2.90
10,335.0	92.00	148.40	7,142.6	-3,341.4	3,111.4	4,560.1	4.34	3.75	-2.19
10,367.0	90.40	149.20	7,142.0	-3,368.8	3,128.0	4,591.7	5.59	-5.00	2.50
10,398.0	89.10	147.50	7,142.1	-3,395.2	3,144.2	4,622.3	6.90	-4.19	-5.48
10,430.0	88.50	149.10	7,142.8	-3,422.4	3,161.1	4,654.0	5.34	-1.88	5.00
10,462.0	88.50	146.90	7,143.6	-3,449.5	3,178.0	4,685.7	6.87	0.00	-6.88
10,493.0	89.10	148.70	7,144.2	-3,475.8	3,194.5	4,716.4	6.12	1.94	5.81
10,525.0	89.80	148.70	7,144.6	-3,503.1	3,211.1	4,748.0	2.19	2.19	0.00
10,557.0	88.10	145.60	7,145.1	-3,530.0	3,228.5	4,779.7	11.05	-5.31	-9.69
10,588.0	87.80	145.40	7,146.2	-3,555.5	3,246.0	4,810.5	1.16	-0.97	-0.65
10,620.0	86.20	147.10	7,147.9	-3,582.1	3,263.8	4,842.3	7.29	-5.00	5.31
10,652.0	86.10	145.60	7,150.1	-3,608.7	3,281.5	4,874.0	4.69	-0.31	-4.69
10,684.0	87.70	145.40	7,151.8	-3,635.0	3,299.6	4,905.8	5.04	5.00	-0.63
10,715.0	88.90	145.40	7,152.7	-3,660.5	3,317.2	4,936.7	3.87	3.87	0.00
10,746.0	88.40	145.60	7,153.5	-3,686.0	3,334.7	4,967.5	1.74	-1.61	0.65
10,778.0	88.90	144.10	7,154.2	-3,712.2	3,353.2	4,999.4	4.94	1.56	-4.69
10,809.0	90.20	145.20	7,154.5	-3,737.5	3,371.1	5,030.3	5.49	4.19	3.55
10,841.0	88.70	143.30	7,154.8	-3,763.4	3,389.8	5,062.2	7.56	-4.69	-5.94
10,873.0	89.60	142.60	7,155.2	-3,789.0	3,409.1	5,094.1	3.56	2.81	-2.19
10,904.0	90.90	143.10	7,155.1	-3,813.7	3,427.8	5,125.1	4.49	4.19	1.61
10,936.0	91.00	144.50	7,154.6	-3,839.5	3,446.7	5,157.0	4.39	0.31	4.38
10,967.0	89.00	143.10	7,154.6	-3,864.5	3,465.0	5,187.9	7.88	-6.45	-4.52
10,999.0	89.10	143.30	7,155.1	-3,890.1	3,484.1	5,219.9	0.70	0.31	0.63
11,032.0	90.10	144.50	7,155.3	-3,916.8	3,503.6	5,252.8	4.73	3.03	3.64
11,064.0	89.40	142.70	7,155.5	-3,942.6	3,522.6	5,284.7	6.04	-2.19	-5.63
11,096.0	90.00	143.40	7,155.6	-3,968.1	3,541.8	5,316.7	2.88	1.88	2.19
11,128.0	90.10	144.00	7,155.6	-3,993.9	3,560.8	5,348.6	1.90	0.31	1.88
11,160.0	90.00	142.00	7,155.6	-4,019.5	3,580.0	5,380.6	6.26	-0.31	-6.25
11,191.0	90.30	141.50	7,155.5	-4,043.8	3,599.2	5,411.5	1.88	0.97	-1.61
11,223.0	89.90	140.30	7,155.4	-4,068.7	3,619.4	5,443.5	3.95	-1.25	-3.75
11,255.0	90.40	140.10	7,155.4	-4,093.2	3,639.9	5,475.5	1.68	1.56	-0.63
11,287.0	90.20	139.80	7,155.2	-4,117.7	3,660.5	5,507.5	1.13	-0.63	-0.94
11,319.0	90.00	140.80	7,155.1	-4,142.4	3,680.9	5,539.5	3.19	-0.63	3.13
11,350.0	90.60	142.60	7,155.0	-4,166.7	3,700.1	5,570.5	6.12	1.94	5.81
11,382.0	89.80	144.30	7,154.9	-4,192.4	3,719.2	5,602.5	5.87	-2.50	5.31
11,413.0	89.50	145.70	7,155.1	-4,217.8	3,737.0	5,633.3	4.62	-0.97	4.52
11,445.0	89.50	146.30	7,155.3	-4,244.3	3,754.8	5,665.1	1.87	0.00	1.88
11,476.0	91.20	148.00	7,155.1	-4,270.3	3,771.7	5,695.9	7.76	5.48	5.48
11,508.0	90.10	146.90	7,154.8	-4,297.3	3,788.9	5,727.6	4.86	-3.44	-3.44

Company:	EOG Resources, Inc - RM	Local Co-ordinate Reference:	Well Critter Creek #30-26H
Project:	Weld County, CO	TVD Reference:	WELL @ 5184.0usft (SST #53)
Site:	Sec. 26, T11N, R63W, 6th P.M	MD Reference:	WELL @ 5184.0usft (SST #53)
Well:	Critter Creek #30-26H	North Reference:	True
Wellbore:	Wellbore #1	Survey Calculation Method:	Minimum Curvature
Design:	Wellbore #1	Database:	EDM 5000.1 Single User Db

Survey

Measured Depth (usft)	Inclination (°)	Azimuth (°)	Vertical Depth (usft)	+N/-S (usft)	+E/-W (usft)	Vertical Section (usft)	Dogleg Rate (°/100usft)	Build Rate (°/100usft)	Turn Rate (°/100usft)
11,540.0	88.50	146.60	7,155.2	-4,324.1	3,806.4	5,759.4	5.09	-5.00	-0.94
11,571.0	88.10	144.80	7,156.1	-4,349.7	3,823.9	5,790.2	5.95	-1.29	-5.81
11,603.0	88.30	146.80	7,157.1	-4,376.1	3,841.9	5,822.0	6.28	0.63	6.25
11,635.0	91.10	148.00	7,157.3	-4,403.1	3,859.1	5,853.7	9.52	8.75	3.75
11,666.0	92.20	147.80	7,156.4	-4,429.3	3,875.6	5,884.4	3.61	3.55	-0.65
11,698.0	92.20	145.70	7,155.1	-4,456.1	3,893.1	5,916.2	6.56	0.00	-6.56
11,730.0	91.40	145.90	7,154.1	-4,482.5	3,911.1	5,948.0	2.58	-2.50	0.63
11,761.0	90.00	145.00	7,153.8	-4,508.1	3,928.6	5,978.8	5.37	-4.52	-2.90
11,793.0	88.40	143.80	7,154.2	-4,534.1	3,947.3	6,010.7	6.25	-5.00	-3.75
11,825.0	87.80	145.20	7,155.3	-4,560.1	3,965.8	6,042.6	4.76	-1.88	4.38
11,856.0	88.70	146.40	7,156.2	-4,585.7	3,983.3	6,073.4	4.84	2.90	3.87
11,887.0	88.60	147.10	7,156.9	-4,611.6	4,000.3	6,104.2	2.28	-0.32	2.26
11,919.0	88.80	146.80	7,157.7	-4,638.5	4,017.7	6,136.0	1.13	0.63	-0.94
11,951.0	89.40	146.90	7,158.2	-4,665.3	4,035.2	6,167.7	1.90	1.88	0.31
11,982.0	89.90	147.50	7,158.4	-4,691.3	4,052.0	6,198.5	2.52	1.61	1.94
12,077.0	90.40	145.40	7,158.1	-4,770.5	4,104.5	6,292.8	2.27	0.53	-2.21
12,172.0	90.70	145.70	7,157.2	-4,848.8	4,158.2	6,387.4	0.45	0.32	0.32
12,236.0	91.40	146.10	7,156.0	-4,901.8	4,194.1	6,451.0	1.26	1.09	0.63
TD @ 12282' MD / 7155' TVD									
12,282.0	91.40	146.10	7,154.9	-4,940.0	4,219.7	6,496.7	0.00	0.00	0.00

Survey Annotations

Measured Depth (usft)	Vertical Depth (usft)	Local Coordinates		Comment
		+N/-S (usft)	+E/-W (usft)	
1,208.0	1,208.0	-0.7	3.9	Tie-In to Gyro
4,688.8	4,581.1	-500.8	622.2	Cross Section-Line @ 4689' MD
5,439.0	5,302.5	-630.9	781.2	Cross Section-Line @ 5439' MD
7,498.4	7,124.1	-1,133.7	1,380.2	Cross Hard-Line @ 7498' MD
12,282.0	7,154.9	-4,940.0	4,219.7	TD @ 12282' MD / 7155' TVD

Checked By: _____ Approved By: _____ Date: _____