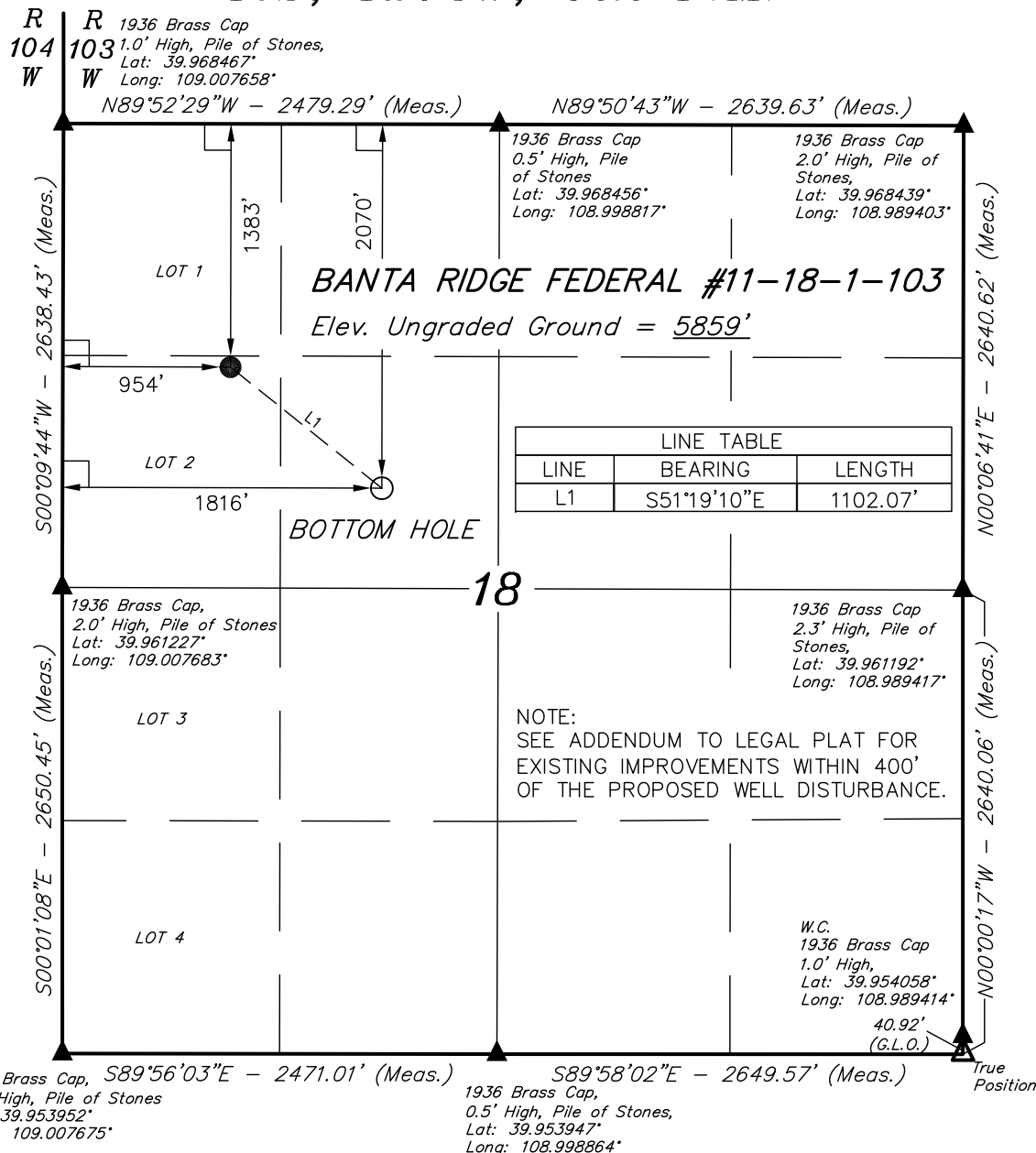


T1S, R103W, 6th P.M.



LEGEND:

- └─┘ = 90° SYMBOL
- = PROPOSED WELL HEAD.
- ▲ = SECTION CORNERS LOCATED.
- △ = SECTION CORNERS RE-ESTABLISHED.
(Not Set on Ground.)

NAD 83 (TARGET BOTTOM HOLE)	NAD 83 (SURFACE LOCATION)
LATITUDE = 39°57'46.00" (39.962778)	LATITUDE = 39°57'52.80" (39.964667)
LONGITUDE = 109°00'04.32" (109.001200)	LONGITUDE = 109°00'15.37" (109.004269)
NAD 27 (TARGET BOTTOM HOLE)	NAD 27 (SURFACE LOCATION)
LATITUDE = 39°57'46.11" (39.962808)	LATITUDE = 39°57'52.91" (39.964697)
LONGITUDE = 109°00'01.93" (109.000536)	LONGITUDE = 109°00'12.98" (109.003606)

PDOP = 1.8

FOUNDATION ENERGY MANAGEMENT

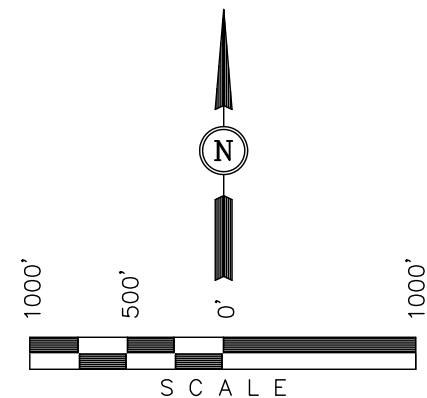
Well location, BANTA RIDGE FEDERAL #11-18-1-103, located as shown in LOT 2 of Section 18, T1S, R103W, 6th P.M., Rio Blanco County, Colorado.

BASIS OF ELEVATION

SPOT ELEVATION AT THE W.C. WEST 1/4 CORNER OF SECTION 9, T1S, R103W, 6th P.M. TAKEN FROM THE BANTY RIDGE QUADRANGLE, COLORADO, RIO BLANCO COUNTY, 7.5 MINUTE QUAD (TOPOGRAPHIC MAP) PUBLISHED BY THE UNITED STATES DEPARTMENT OF THE INTERIOR, GEOLOGICAL SURVEY. SAID ELEVATION IS MARKED AS BEING 5876 FEET.

BASIS OF BEARINGS

BASIS OF BEARINGS IS A G.P.S. OBSERVATION.



CERTIFICATE

THIS IS TO CERTIFY THAT THE ABOVE PLAT WAS PREPARED FROM FIELD NOTES OF ACTUAL SURVEYS MADE BY ME OR UNDER MY SUPERVISION AND THAT THE SAME ARE TRUE AND CORRECT TO THE BEST OF MY KNOWLEDGE AND BELIEF.

REGISTERED LAND SURVEYOR
REGISTRATION NO. 17492
STATE OF COLORADO

REVISED: 05-19-11 M.D.

REVISED: 03-14-11 M.D.

UINTAH ENGINEERING & LAND SURVEYING
85 SOUTH 200 EAST - VERNAL, UTAH 84078
(435) 789-1017

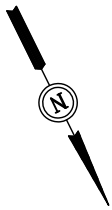
SCALE 1" = 1000'	DATE SURVEYED: 01-27-11	DATE DRAWN: 02-10-11
PARTY G.S. G.B. M.D.	REFERENCES G.L.O. PLAT	
WEATHER COLD	FILE FOUNDATION ENERGY MANAGEMENT	

FOUNDATION ENERGY MANAGEMENT

ADDENDUM TO LEGAL PLAT FOR

BANTA RIDGE FEDERAL #11-18-1-103, & #12B-18-1-103
SECTION 18, T1S, R103W, 6th P.M.
LOT 2

SCALE: 1" = 200'
DATE: 02-14-11
DRAWN BY: M.D.
REVISED: 03-14-11
REVISED: 05-19-11



400' Offset
from Edge of
Disturbance

Existing
Pipeline

Proposed #11-18-1-103

(NAD 83)

Latitude: 39.964667°

Longitude: 109.004269°

Existing
Drainage

Existing
Drainage

Topsoil Stockpile

400'

Cuttings Pit
Backfill & Spoils
Stockpile

Existing
Road

Existing
Drainage

LINE TABLE

LINE	BEARING	LENGTH	FEATURE
L1	S49°19'53"W	107.33'	PIPE
L2	S50°32'28"W	363.24'	DRAINAGE
L3	N85°36'14"W	195.16'	DRAINAGE
L4	N17°00'14"W	562.19'	DRAINAGE
L5	N03°36'54"E	168.86'	EXISTING ROAD
L6	S19°18'42"E	339.60'	DRAINAGE

UINTAH ENGINEERING & LAND SURVEYING
85 So. 200 East * Vernal, Utah 84078 * (435) 789-1017