

The Road to Excellence Starts with Safety

Sold To #: 353810	Ship To #: 2855646	Quote #:	Sales Order #: 8201156
Customer: XTO ENERGY INC EBUSINESS		Customer Rep:	
Well Name: Hill Ranch		Well #: 12-04	API/UWI #:
Field:	City (SAP): TRINIDAD	County/Parish: Las Animas	State: Colorado
Contractor: ??		Rig/Platform Name/Num: ??	
Job Purpose: Cement Multiple Stages			
Well Type: Development Well		Job Type: Cement Multiple Stages	
Sales Person: FLING, MATTHEW		Srvc Supervisor: WHEELER, JUSTIN	MBU ID Emp #: 196470

Job Personnel

HES Emp Name	Exp Hrs	Emp #	HES Emp Name	Exp Hrs	Emp #	HES Emp Name	Exp Hrs	Emp #
BRICKER, DANIEL Z	4.5	475710	CHAVEZ, JEROME Christophe	4.5	458298	DIRKS, RICHARD E	4.5	485940
GIBBS, JASON Edwin	4.5	300487	PAUMEN, CORD Anthony	4.5	453759	VIGIL, NICHOLAS	4.5	443481
WHEELER, JUSTIN W	4.5	196470	Fry, Dominick	4.5	426436			

Equipment

HES Unit #	Distance-1 way	HES Unit #	Distance-1 way	HES Unit #	Distance-1 way	HES Unit #	Distance-1 way
10248053C	42 mile	10824253C	42 mile	10948694	42 mile	11026160	42 mile
11036295	42 mile	11515861C	42 mile	11562570C	42 mile	11177026	42 mile

Job Hours

Date	On Location Hours	Operating Hours	Date	On Location Hours	Operating Hours	Date	On Location Hours	Operating Hours
5-26-11	4.5	2.5						

TOTAL Total is the sum of each column separately

Job

Job Times

Formation Name	Date	Time	Time Zone
Formation Depth (MD) Top	Called Out	26 - May - 2011	00:00 MST
Bottom	On Location	26 - May - 2011	02:00 MST
Form Type	Job Started	26 - May - 2011	03:31 MST
Job depth MD	Job Completed	26 - May - 2011	05:27 MST
Water Depth	Departed Loc	26 - May - 2011	06:30 MST
Perforation Depth (MD) From			
To			

Well Data

Description	New / Used	Max pressure psig	Size in	ID in	Weight lbm/ft	Thread	Grade	Top MD ft	Bottom MD ft	Top TVD ft	Bottom TVD ft
7 7/8" Openhole				7.875				483.	1954.		
Multiple Stage Cementer	Unknown								1038.		
5 1/2" Production Casing	Unknown		5.5	4.95	15.5		J-55		1954.		
8 5/8" Surface Casing	Unknown		8.625	8.097	24.		J-55		483.		

Tools and Accessories

Type	Size	Qty	Make	Depth	Type	Size	Qty	Make	Depth	Type	Size	Qty	Make
Guide Shoe					Packer					Top Plug			
Float Shoe	5 1/2"	1		1954'	Bridge Plug					Bottom Plug			
Float Collar	5 1/2"	1		1906'	Retainer					SSR plug set	5 1/2"	1	
Insert Float										Plug Container			
Stage Tool	5 1/2"	1		1038'						Centralizers			

Miscellaneous Materials

Gelling Agt	Conc	Surfactant	Conc	Acid Type	Qty	Conc	%
Treatment Fld	Conc	Inhibitor	Conc	Sand Type	Size	Conc	Qty

Fluid Data									
Stage/Plug #: 1									
Fluid #	Stage Type	Fluid Name	Qty	Qty uom	Mixing Density lbm/gal	Yield ft3/sk	Mix Fluid Gal/sk	Rate bbl/min	Total Mix Fluid Gal/sk
1	FRESH WATER		10	bbl	8.33	.0	.0	.0	
2	GELLED WATER		20	bbl	8.33	.0	.0	.0	
0.2 gal/Mgal		LGC-VI UC, BULK (101582755)							
3	TUNED LIGHT TRINIDAD	TUNED LIGHT (TM) SYSTEM (452984)	135	sacks	10.	2.24	7.93		7.93
7.93 Gal		FRESH WATER							
4	DISPLACEMENT		45.4	bbl	8.33	.0	.0	.0	
Stage/Plug #: 2									
Fluid #	Stage Type	Fluid Name	Qty	Qty uom	Mixing Density uom	Yield uom	Mix Fluid uom	Rate uom	Total Mix Fluid uom
1	FRESH WATER		10	bbl	8.33	.0	.0	.0	
2	GELLED WATER		20	bbl	8.33	.0	.0	.0	
0.2 gal/Mgal		LGC-VI UC, BULK (101582755)							
3	TUNED LIGHT TRINIDAD	TUNED LIGHT (TM) SYSTEM (452984)	135	sacks	10.	2.24	7.93		7.93
7.93 Gal		FRESH WATER							
4	DISPLACEMENT		24.7	bbl	8.33	.0	.0	.0	
Calculated Values		Pressures		Volumes					
Displacement	45.4 / 24.7	Shut In: Instant		Lost Returns		Cement Slurry	107.8	Pad	
Top Of Cement	Surface	5 Min		Cement Returns	17 bbls	Actual Displacement	45.4 / 24.7	Treatment	
Frac Gradient		15 Min		Spacers	60 bbls	Load and Breakdown		Total Job	
Rates									
Circulating		Mixing		Displacement		Avg. Job			
Cement Left In Pipe	Amount	0 ft	Reason	Shoe Joint					
Frac Ring # 1 @	ID	Frac ring # 2 @	ID	Frac Ring # 3 @	ID	Frac Ring # 4 @	ID		
The Information Stated Herein Is Correct				Customer Representative Signature					

The Road to Excellence Starts with Safety

Sold To #: 353810		Ship To #: 2855646		Quote #:		Sales Order #: 8201156	
Customer: XTO ENERGY INC EBUSINESS				Customer Rep:			
Well Name: Hill Ranch			Well #: 12-04		API/UWI #:		
Field:		City (SAP): TRINIDAD		County/Parish: Las Animas		State: Colorado	
Legal Description:							
Lat: N 0 deg. OR N 0 deg. 0 min. 0 secs.				Long: E 0 deg. OR E 0 deg. 0 min. 0 secs.			
Contractor: ??			Rig/Platform Name/Num: ??				
Job Purpose: Cement Multiple Stages					Ticket Amount:		
Well Type: Development Well			Job Type: Cement Multiple Stages				
Sales Person: FLING, MATTHEW			Srcv Supervisor: WHEELER, JUSTIN		MBU ID Emp #: 196470		

Activity Description	Date/Time	Cht #	Rate bbl/min	Volume bbl		Pressure psig		Comments
				Stage	Total	Tubing	Casing	
Arrive At Loc	05/26/2011 02:00							
Safety Meeting - Pre Rig-Up	05/26/2011 02:10							
Test Lines	05/26/2011 03:22							
Pump Spacer	05/26/2011 03:33		2	57			.0	Pump Fresh Water, Casing Volume, + 10 bbls Pressure spike at pipe cap.
Pump Spacer	05/26/2011 03:51		3	20			.0	Pump Gel Water
Pump Cement	05/26/2011 04:02		3	53.9			5.0	Mix and Pump Tuned Light Cement @ 9.4 #/gal with rig H2O supplied by rig
Drop Plug	05/26/2011 04:19							
Pump Displacement - Start	05/26/2011 04:21		3	0			.0	Pump Fresh Water Displacement
Pump Displacement - End	05/26/2011 04:38		2	45.4			145.0	
Bump Plug	05/26/2011 04:38		2	45.4			705.0	
Check Floats	05/26/2011 04:40							Floats Holding
Drop Opening Device For Multiple Stage Cementer	05/26/2011 04:40							Drop Bomb, wait 5 Minutes for Bomb to Fall
Open Multiple Stage Cementer	05/26/2011 04:49						2395.0	
Pump Spacer	05/26/2011 04:51		2	10			.0	Pump Fresh Water
Pump Spacer	05/26/2011 04:57		2	20			.0	Pump Gelled Water Spacer

Sold To #: 353810

Ship To #: 2855646

Quote #:

Sales Order #:

8201156

SUMMIT Version: 7.20.130

Thursday, May 26, 2011 06:00:00

Activity Description	Date/Time	Cht #	Rate bbl/min	Volume bbl		Pressure psig		Comments
				Stage	Total	Tubing	Casing	
Pump Cement	05/26/2011 05:03		4	53.9			20.0	Mix and Pump 135 sks Tuned Light Cement @ 10 lb/gal
Other	05/26/2011 05:12		4	41			70.0	Circulation Established at 41 bbls Cement Pumped
Drop Plug	05/26/2011 05:15							Shut-Down, Drop Closing Plug
Pump Displacement - Start	05/26/2011 05:16		4	0			130.0	Pump Fresh Water Displacement
Cement Returns to Surface	05/26/2011 05:18		3	7			130.0	17 bbls Cement to Surface
Pump Displacement - End	05/26/2011 05:24		2	24.7			140.0	
Bump Plug	05/26/2011 05:24		2	24.7			1645.0	
Close Multiple Stage Cements	05/26/2011 05:25						1645.0	
Release Casing Pressure	05/26/2011 05:26							
Safety Meeting - Pre Rig-Down	05/26/2011 06:00							
Safety Meeting - Departing Location	05/26/2011 06:30							
Depart from Service Center or Other Site	05/26/2011 21:00							

Sold To # : 353810

Ship To # : 2855646

Quote # :

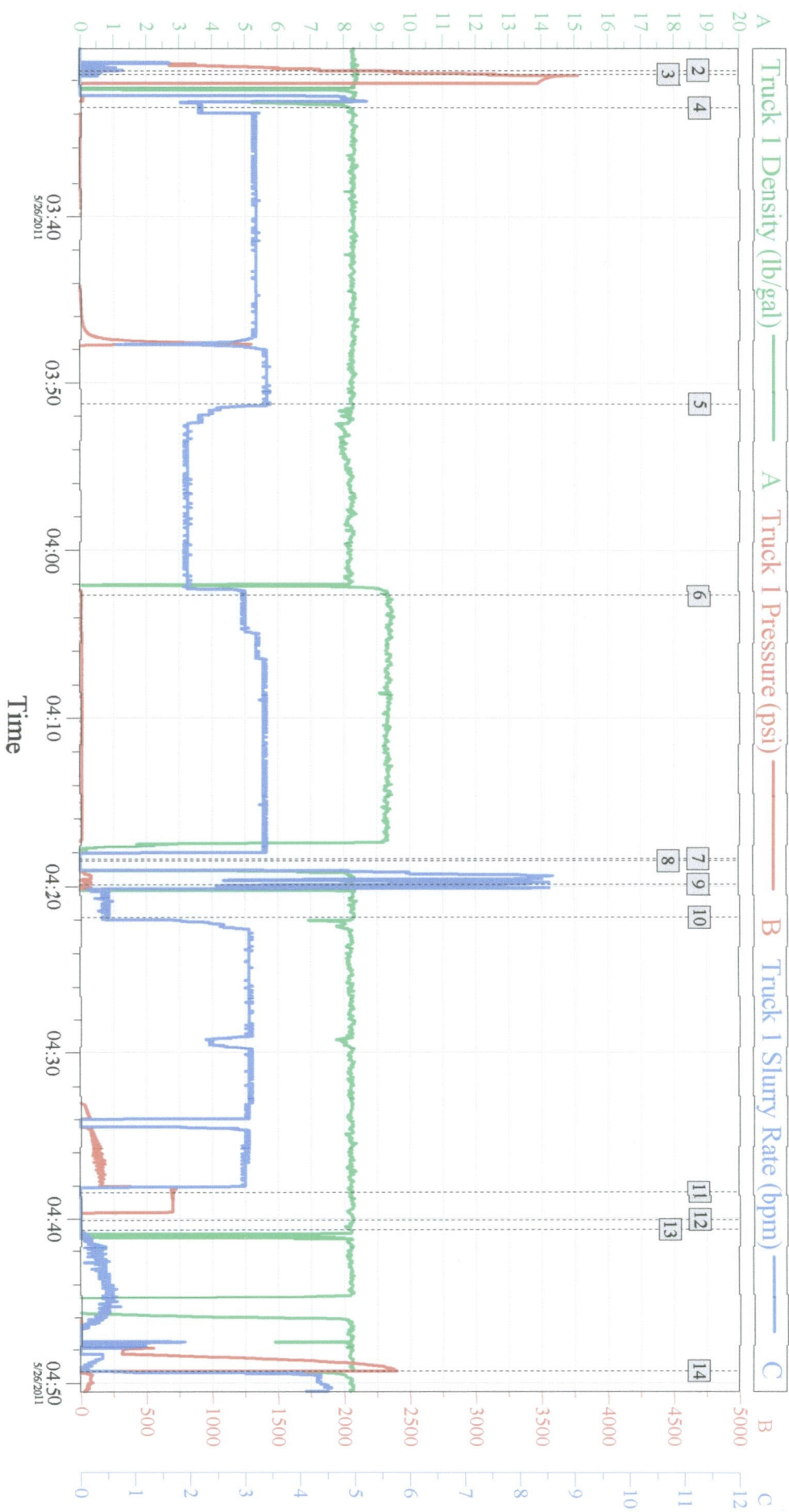
Sales Order # :

8201156

SUMMIT Version: 7.20.130

Thursday, May 26, 2011 06:00:00

XTO - Hill Ranch 12-04 5 1/2" Production Casing - 1st Stage



Global Event Log

Intersection	TIP	TISR	Intersection	TIP	TISR	Intersection	TIP	TISR
2 Start Job	03:31:26	1816	3 Test Lines	03:31:40	3111	4 Pump Fresh Water	03:33:38	-5.043
5 Pump Gelled Water	03:51:15	-5.355	6 Pump Cement	04:02:41	4.592	7 Shutdown	04:18:23	-8.020
8 Clean Lines	04:18:30	-7.340	9 Drop 1st Stage Shutoff plug	04:19:53	42.17	10 Pump Displacement	04:21:51	-8.898
11 Bump Plug	04:38:25	707.6	12 Check Floats	04:40:05	-10.88	13 Drop Opening Device For MSC	04:40:40	-13.23
14 Set Packer, Open MSC	04:49:16	2394						0.000

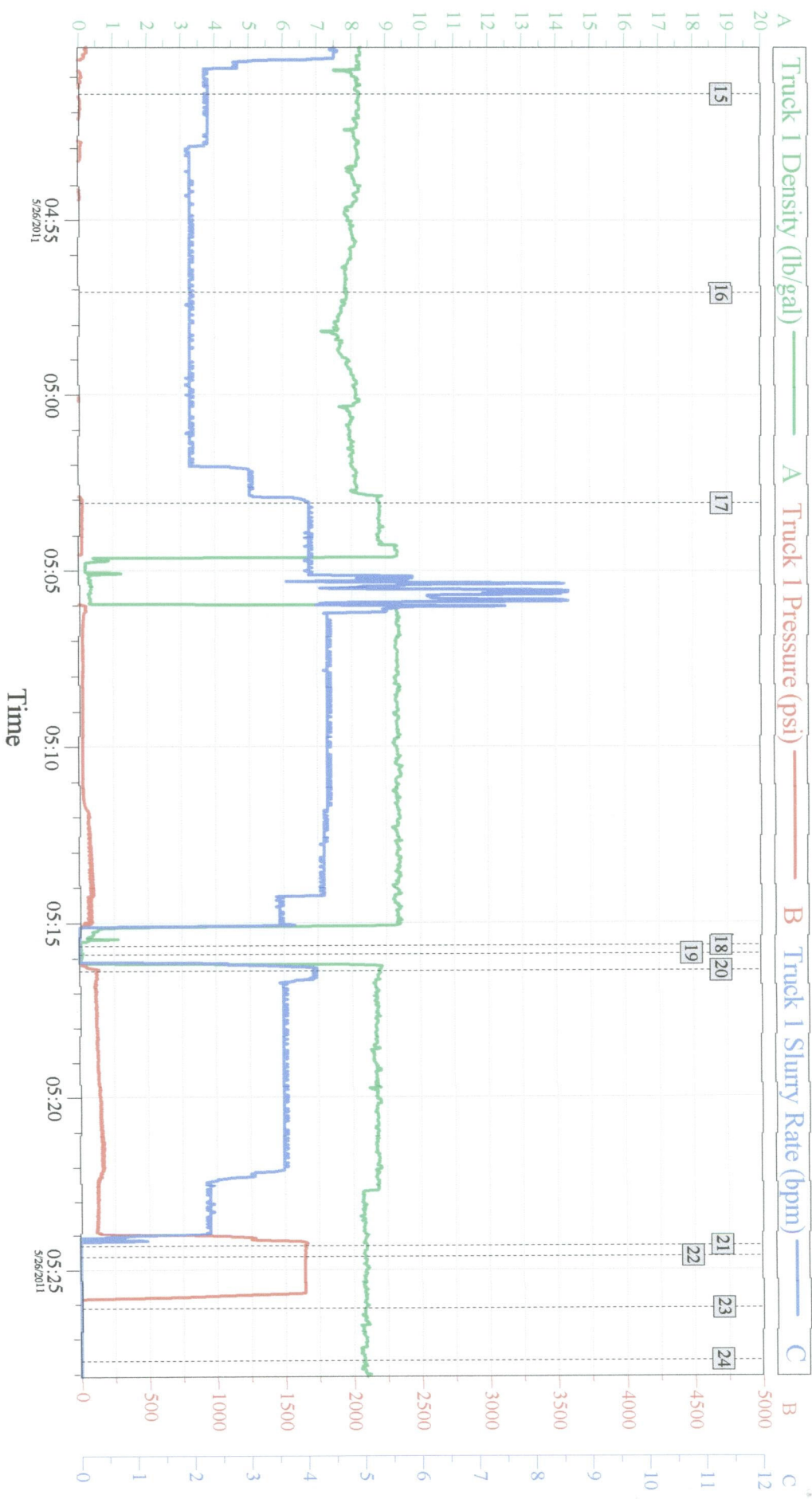
Customer: XTO
Well Description: Hill Ranch 12-04

Job Date: 26-May-2011
UWI:

Sales Order #: 8201156

OptiCem v6.4.9
26-May-11 05:36

XTO - Hill Ranch 12-04 5 1/2" Production Casing - 2nd Stage



Global Event Log

Intersection	TIP	TISR	Intersection	TIP	TISR	Intersection	TIP	TISR			
15 Pump Fresh Water	04:51:30	-3.955	2.218	16 Pump Gelled Water	04:57:04	-7.909	1.957	17 Pump Cement	05:03:05	21.87	4.044
18 Shutdown	05:15:39	-0.989	0.000	19 Drop Closing Plug	05:15:53	-1.978	0.000	20 Pump Displacement	05:16:22	128.9	4.109
21 Bump Plug	05:24:18	1645	0.000	22 Close Multiple Stage Cementer	05:24:37	1644	0.000	23 Release Casing Pressure	05:26:07	0.000	0.000
24 End Job	05:27:37	0.988	0.000								

Customer: XTO	Job Date: 26-May-2011	Sales Order #: 8201156
Well Description: Hill Ranch 12-04	LWT:	OptiCem v6.4.9 26-May-11 05:39