

The Road to Excellence Starts with Safety

Sold To #: 353810	Ship To #: UNKNOWN	Quote #:	Sales Order #: 8193852
Customer: XTO ENERGY INC EBUSINESS		Customer Rep: Coffee, Ron	
Well Name: Hill Ranch	Well #: 12-04	API/UWI #: 05-071-09849-00	
Field:	City (SAP): UNKNOWN	County/Parish: Las Animas	State: Colorado
Contractor: Pense Drilling		Rig/Platform Name/Num: 19	
Job Purpose: Cement Surface Casing			
Well Type: Development Well		Job Type: Cement Surface Casing	
Sales Person: FLING, MATTHEW		Srvc Supervisor: WHEELER, JUSTIN	MBU ID Emp #: 196470

Job Personnel

HES Emp Name	Exp Hrs	Emp #	HES Emp Name	Exp Hrs	Emp #	HES Emp Name	Exp Hrs	Emp #
CHAVEZ, JEROME Christophe	3	458298	PAUMEN, CORD Anthony	3	453759	VIGIL, NICHOLAS	3	443481
WHEELER, JUSTIN W	3	196470	Fry, Dominick	3				

Equipment

HES Unit #	Distance-1 way	HES Unit #	Distance-1 way	HES Unit #	Distance-1 way	HES Unit #	Distance-1 way
10025030	42 mile	10824253C	42 mile	10948694	42 mile	11338223	42 mile

Job Hours

Date	On Location Hours	Operating Hours	Date	On Location Hours	Operating Hours	Date	On Location Hours	Operating Hours
5-24-11	3	1.5						
TOTAL			Total is the sum of each column separately					

Job

Job Times

Formation Name	Date	Time	Time Zone	
Formation Depth (MD) Top	Called Out	24 - May - 2011	00:00	MST
Formation Depth (MD) Bottom	On Location	24 - May - 2011	15:00	MST
Form Type	Job Started	24 - May - 2011	16:27	MST
Job depth MD	Job Completed	24 - May - 2011	17:14	MST
Water Depth	Departed Loc	24 - May - 2011	18:00	MST
Perforation Depth (MD) From				
Perforation Depth (MD) To				

Well Data

Description	New / Used	Max pressure psig	Size in	ID in	Weight lbf/ft	Thread	Grade	Top MD ft	Bottom MD ft	Top TVD ft	Bottom TVD ft
11" Openhole				11.				43.	485.		
13 3/8" Conductor Casing	Unknown		13.375	12.715	48.			.	43.		
8 5/8" Surface Casing	Unknown		8.625	8.097	24.		J-55	.	483.		

Tools and Accessories

Type	Size	Qty	Make	Depth	Type	Size	Qty	Make	Depth	Type	Size	Qty	Make
Guide Shoe	8 5/8"	1		483'	Packer					Top Plug			
Float Shoe					Bridge Plug					Bottom Plug			
Float Collar					Retainer					SSR plug set			
Insert Float										Plug Container			
Stage Tool										Centralizers			

Miscellaneous Materials

Gelling Agt	Conc	Surfactant	Conc	Acid Type	Qty	Conc	%
Treatment Fld	Conc	Inhibitor	Conc	Sand Type	Size	Qty	

Fluid Data

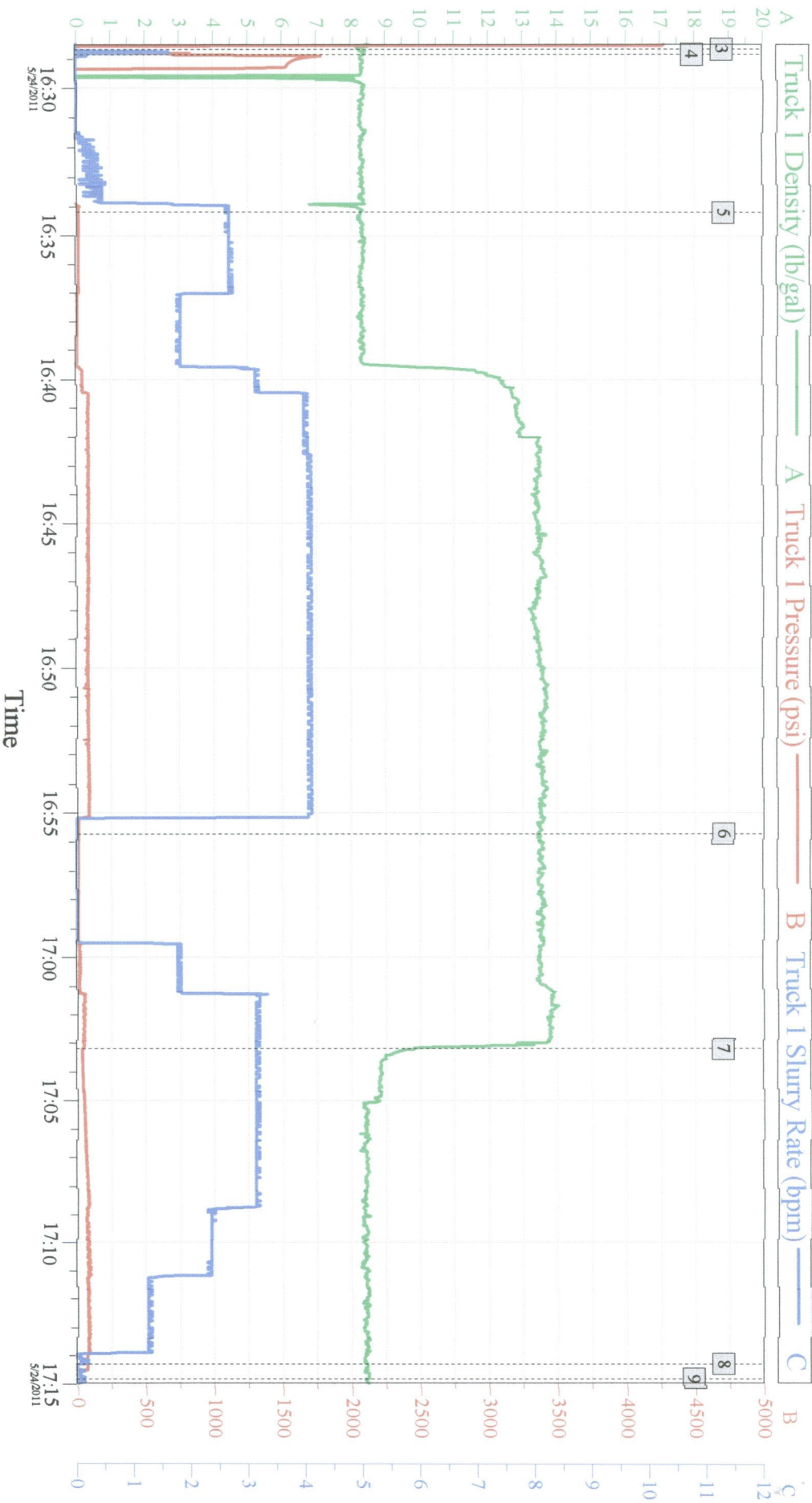
Stage/Plug #: 1										
Fluid #	Stage Type	Fluid Name	Qty	Qty uom	Mixing Density lbf/gal	Yield ft ³ /sk	Mix Fluid Gal/sk	Rate bbl/min	Total Mix Fluid Gal/sk	

The Road to Excellence Starts with Safety

Sold To #: 353810	Ship To #: UNKNOWN	Quote #:	Sales Order #: 8193852
Customer: XTO ENERGY INC EBUSINESS		Customer Rep: Coffee, Ron	
Well Name: Hill Ranch	Well #: 12-04	API/UWI #: 05-071-09849-00	
Field:	City (SAP): UNKNOWN	County/Parish: Las Animas	State: Colorado
Legal Description:			
Lat: N 0 deg. OR N 0 deg. 0 min. 0 secs.		Long: E 0 deg. OR E 0 deg. 0 min. 0 secs.	
Contractor: Pense Drilling		Rig/Platform Name/Num: 19	
Job Purpose: Cement Surface Casing			Ticket Amount:
Well Type: Development Well		Job Type: Cement Surface Casing	
Sales Person: FLING, MATTHEW		Srv Supervisor: WHEELER, JUSTIN	MBU ID Emp #: 196470

Activity Description	Date/Time	Cht #	Rate bbl/min	Volume bbl		Pressure psig		Comments
				Stage	Total	Tubing	Casing	
Depart from Service Center or Other Site	05/24/2011 14:00							
Arrive At Loc	05/24/2011 15:00							
Safety Meeting - Pre Rig-Up	05/24/2011 15:30							
Test Lines	05/24/2011 16:28							
Pump Spacer	05/24/2011 16:34		2.5	10			20.0	Pump Fresh Water Ahead
Pump Cement	05/24/2011 16:40		4	70			90.0	Mix and Pump 215 sks Cement @ 13.5 lb/gal
Circulate Well	05/24/2011 16:45		4					Circulation Established at 28 bbls Total Fluid Pumped
Cement Returns to Surface	05/24/2011 16:54		4					Cement to Surface
Shutdown	05/24/2011 16:55							Shut-Down, Watch for Cement Fallback
Pump Displacement - Start	05/24/2011 17:03		3	0			40.0	Cement not Falling Back, Pump Fresh Water Displacement
Pump Displacement - End	05/24/2011 17:14		1	27.5			80.0	Good Returns Throughout Job, 33 bbls Cement to Pit
Shut In Well	05/24/2011 17:14						75.0	
Safety Meeting - Pre Rig-Down	05/24/2011 17:30							
Safety Meeting - Departing Location	05/24/2011 18:00							

XTO - Hill Ranch 12-04 8 5/8" Surface Casing



Global Event Log

Intersection	TIP	TISR	Intersection	TIP	TISR
3 Test Lines	16:28:41	1.977	4 Pump Fresh Water	16:28:51	721.3
5 Pump Cement	16:34:11	18.78	6 Shut-Down, Watch for Cement Fallback	16:55:43	11.41
7 Pump Displacement	17:03:12	42.51	8 Shut In Well	17:14:17	76.13
9 End Job	17:14:49	-20.76			0.130

Customer: XTO Job Date: 24-May-2011 Sales Order #: 8193852
 Well Description: Hill Ranch 12-04 UWT: