

The Road to Excellence Starts with Safety

Sold To #: 353810	Ship To #: UNKNOWN	Quote #:	Sales Order #: 8193865
Customer: XTO ENERGY INC EBUSINESS		Customer Rep: Coffee, Ron	
Well Name: Hill Ranch	Well #: 12-04	API/UWI #: 05-071-09849-00	
Field:	City (SAP): UNKNOWN	County/Parish: Las Animas	State: Colorado
Contractor: Pense Drilling		Rig/Platform Name/Num: 19	
Job Purpose: Cement Conductor Casing			
Well Type: Development Well		Job Type: Cement Conductor Casing	
Sales Person: THEIS, MATTHEW		Srvc Supervisor: WHEELER, JUSTIN	MBU ID Emp #: 196470

Job Personnel

HES Emp Name	Exp Hrs	Emp #	HES Emp Name	Exp Hrs	Emp #	HES Emp Name	Exp Hrs	Emp #
CHAVEZ, JEROME Christophe	5	458298	PAUMEN, CORD Anthony	5	453759	VIGIL, NICHOLAS	5	443481
WHEELER, JUSTIN W	5	196470						

Equipment

HES Unit #	Distance-1 way	HES Unit #	Distance-1 way	HES Unit #	Distance-1 way	HES Unit #	Distance-1 way
10025030	272 mile	10824253C	272 mile	10948694	272 mile	11338223	272 mile

Job Hours

Date	On Location Hours	Operating Hours	Date	On Location Hours	Operating Hours	Date	On Location Hours	Operating Hours
5-24-11	5	1.5						
TOTAL			<i>Total is the sum of each column separately</i>					

Job

Job Times

Formation Name	Date	Time	Time Zone
Formation Depth (MD) Top	Bottom	Called Out	23 - May - 2011 00:00 MST
Form Type	BHST	On Location	23 - May - 2011 20:30 MST
Job depth MD 43. ft	Job Depth TVD 43. ft	Job Started	24 - May - 2011 00:16 MST
Water Depth	WK Ht Above Floor	Job Completed	24 - May - 2011 00:42 MST
Perforation Depth (MD) From	To	Departed Loc	24 - May - 2011 01:30 MST

Well Data

Description	New / Used	Max pressure psig	Size in	ID in	Weight lbf/ft	Thread	Grade	Top MD ft	Bottom MD ft	Top TVD ft	Bottom TVD ft
17 1/2" Open Hole				11.					43.		
13 3/8" Conductor Casing	Unknown		13.375	12.715	48.				42.		

Tools and Accessories

Type	Size	Qty	Make	Depth	Type	Size	Qty	Make	Depth	Type	Size	Qty	Make
Guide Shoe					Packer					Top Plug			
Float Shoe					Bridge Plug					Bottom Plug			
Float Collar					Retainer					SSR plug set			
Insert Float										Plug Container			
Stage Tool										Centralizers			

Miscellaneous Materials

Gelling Agt	Conc	Surfactant	Conc	Acid Type	Qty	Conc	%
Treatment Fld	Conc	Inhibitor	Conc	Sand Type	Size	Qty	

Fluid Data

Stage/Plug #: 1										
Fluid #	Stage Type	Fluid Name	Qty	Qty uom	Mixing Density lbf/gal	Yield ft ³ /sk	Mix Fluid Gal/sk	Rate bbl/min	Total Mix Fluid Gal/sk	

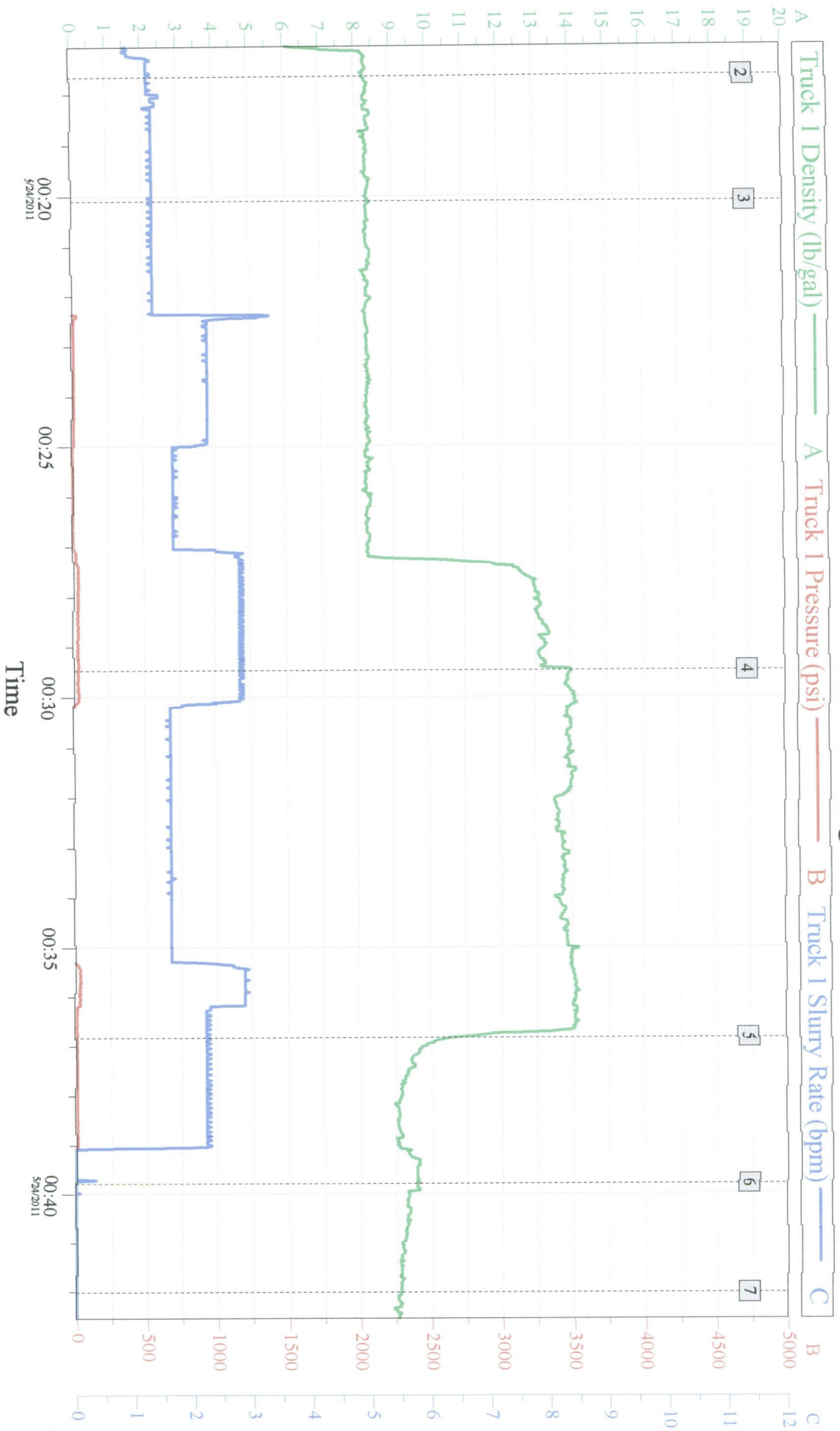
Stage/Plug #: 1									
Fluid #	Stage Type	Fluid Name	Qty	Qty uom	Mixing Density lbm/gal	Yield ft ³ /sk	Mix Fluid Gal/sk	Rate bbl/min	Total Mix Fluid Gal/sk
1	FRESH WATER		10	bbl	8.33	.0	.0	.0	
2	Trinidad Surface Blend	TRINIDAD SURFACE BLEND - SBM (137081)	65	sacks	14.	1.66	7.76	4.0	7.76
	0.25 lbm	POLY-E-FLAKE (101216940)							
	7.76 Gal	FRESH WATER							
3	DISPLACEMENT		6	bbl	8.33	.0	.0	.0	
Calculated Values		Pressures		Volumes					
Displacement	6	Shut In: Instant	10	Lost Returns	No	Cement Slurry	19.2	Pad	
Top Of Cement	Surface	5 Min		Cement Returns	8 bbls	Actual Displacement	6	Treatment	
Frac Gradient		15 Min		Spacers		Load and Breakdown		Total Job	
Rates									
Circulating		Mixing		Displacement		Avg. Job			
Cement Left In Pipe	Amount	0 ft	Reason	Shoe Joint					
Frac Ring # 1 @	ID	Frac ring # 2 @	ID	Frac Ring # 3 @	ID	Frac Ring # 4 @	ID		
The Information Stated Herein Is Correct				Customer Representative Signature					

The Road to Excellence Starts with Safety

Sold To #: 353810	Ship To #: UNKNOWN	Quote #:	Sales Order #: 8193865
Customer: XTO ENERGY INC EBUSINESS		Customer Rep: Coffee, Ron	
Well Name: Hill Ranch	Well #: 12-04	API/UWI #: 05-071-09849-00	
Field:	City (SAP): UNKNOWN	County/Parish: Las Animas	State: Colorado
Legal Description:			
Lat: N 0 deg. OR N 0 deg. 0 min. 0 secs.		Long: E 0 deg. OR E 0 deg. 0 min. 0 secs.	
Contractor: Pense Drilling		Rig/Platform Name/Num: 19	
Job Purpose: Cement Conductor Casing			Ticket Amount:
Well Type: Development Well		Job Type: Cement Conductor Casing	
Sales Person: THEIS, MATTHEW		Srvc Supervisor: WHEELER, JUSTIN	MBU ID Emp #: 196470

Activity Description	Date/Time	Cht #	Rate bbl/min	Volume bbl		Pressure psig		Comments
				Stage	Total	Tubing	Casing	
Depart from Service Center or Other Site	05/23/2011 12:00							
Arrive At Loc	05/23/2011 20:30							
Safety Meeting - Pre Rig-Up	05/23/2011 23:00							
Pump Spacer	05/24/2011 00:17		1.5	10			.0	Pump Fresh Water, Circulation Established at 9 bbls Away
Pump Cement	05/24/2011 00:29		3	19.2			30.0	Mix and Pump 65 sks Cement @ 14 lb/gal
Cement Returns to Surface	05/24/2011 00:34						15.0	8 bbls Cement to Surface
Pump Displacement - Start	05/24/2011 00:36		2	0			10.0	Pump Fresh Water Displacement
Pump Displacement - End	05/24/2011 00:38		2	6			15.0	
Shut In Well	05/24/2011 00:39			6			.0	
Safety Meeting - Pre Rig-Down	05/24/2011 01:00							
Safety Meeting - Departing Location	05/24/2011 01:30							

XTO - Hill Ranch 12-04
13 3/8" Conductor Casing



Global Event Log

Intersection	TIP	TISR	Intersection	TIP	TISR	Intersection	TIP	TISR			
2	Pump Fresh Water	00:17:39 -9.887	1.305	3	Start Job	00:20:06 -6.030	1.370	4	Pump Cement	00:29:28 32.17	2.840
5	Pump Displacement	00:36:49 8.898	2.219	6	Shut-In Well	00:39:47 -9.887	0.000	7	End Job	00:42:01 -19.77	0.000

Customer: Job Date: 23-May-2011 Sales Order #: 8193865
Well Description: UWI: