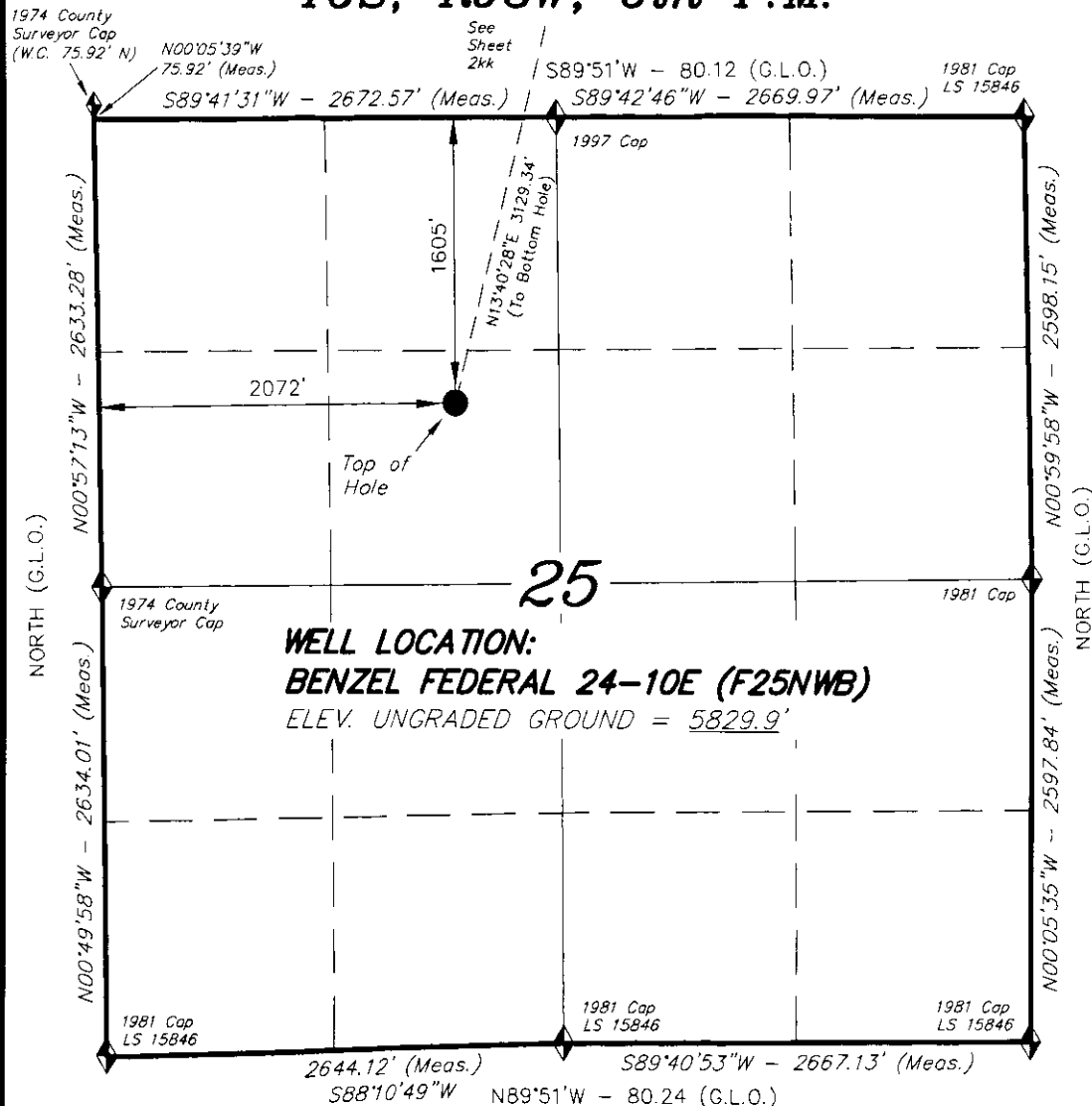
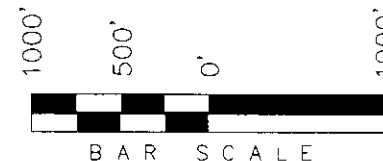


T6S, R93W, 6th P.M.

ENCANA OIL & GAS (USA) INC



WELL LOCATION, BENZEL FEDERAL 24-10E (F25NWB), LOCATED AS SHOWN IN THE SE 1/4 NW 1/4 OF SECTION 25, T6S, R93W, 6th P.M. GARFIELD COUNTY, COLORADO.



NOTES:

1. Well footages are measured at right angles to the Section Lines.
2. Bearings are based on Global Positioning Satellite observations.
3. G.P.S. Operator:
C.D. SLAUGH, (PDOP) = 2.4

IMPROVEMENT NOTE:

See addendum to legal plat (sheet 2v) for visible improvements within 400' of the proposed well pad.

THIS IS TO CERTIFY THAT THE ABOVE PLAT WAS PREPARED FROM FIELD NOTES OF A SURVEY MADE BY ME OR UNDER MY SUPERVISION. THE LOCATION HAS BEEN STAKED ON THE GROUND AS SHOWN ON THE PLAT, AND THAT THE SAME ARE TRUE AND CORRECT TO THE BEST OF MY KNOWLEDGE AND BELIEF.

Stanley L. Stewart
30125
REGISTERED LAND SURVEYOR
REGISTRATION NO. 30125
STATE OF COLORADO

◆ = SECTION CORNERS LOCATED

Basis of elevation is the Rifle 2 Triangulation Station. 39°31'53.80" N Lat. & 107°47'07.78" W Long. (NAD 83). Elevation = 5323.1' (NAVD88).

NAD 83 (SURFACE LOCATION)

LATITUDE = 39°30'01.26"
(39.500351)
LONGITUDE = 107°43'34.65"
(107.726290)

TRI STATE LAND SURVEYING & CONSULTING

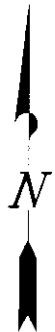
180 NORTH VERNAL AVE. - VERNAL, UTAH 84078
(435) 781-2501

DATE SURVEYED: 11-08-10	SURVEYED BY: C.D.S.	SHEET 2k OF 11
DATE DRAWN: 02-28-11	DRAWN BY: L.C.S.	
REVISED: L.C.S. 03-24-11	SCALE: 1" = 1000'	

T6S, R93W, 6th P.M.

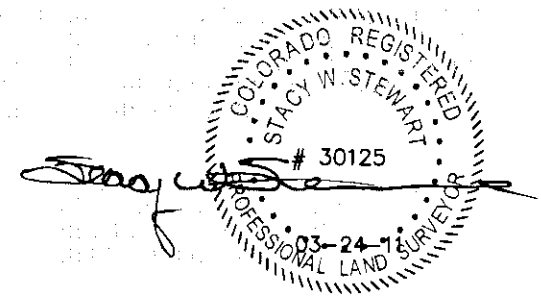
ENCANA OIL & GAS (USA) INC

TARGET BOTTOM HOLE, BENZEL FEDERAL 24-10E (F25NWB), LOCATED AS SHOWN IN THE NW 1/4 SE 1/4 OF SECTION 24, T6S, R93W, 6th P.M. GARFIELD COUNTY, COLORADO.



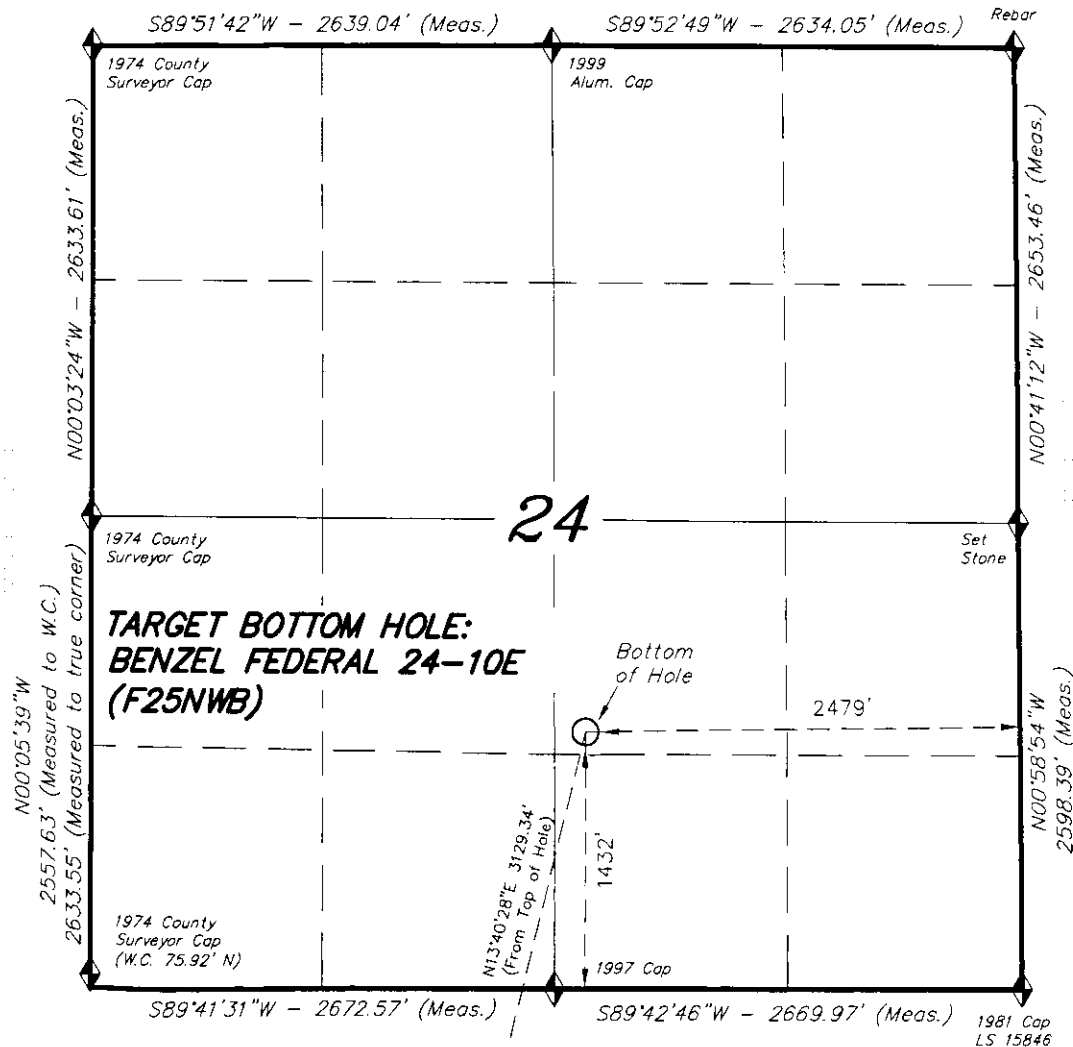
NOTES:

1. Well footages are measured at right angles to the Section Lines.
2. Bearings are based on Global Positioning Satellite observations.



TRI STATE LAND SURVEYING & CONSULTING
180 NORTH VERNAL AVE. - VERNAL, UTAH 84078
(435) 781-2501

SHEET
2kk
OF 11



See
Sheet
2k