

**T6S, R93W, 6th P.M.**

1974 County  
Surveyor Cap  
(W.C. 75.92' N)  
N00°05'39"W  
75.92' (Meas.)

See  
Sheet  
2n

S89°41'31"W  
2672.57' (Meas.)

S89°51'W - 80.12 (G.L.O.)

S89°42'46"W - 2669.97' (Meas.)

1981 Cap  
LS 15846

1997 Cap

N21°40'1"W  
(To Bottom Hole)  
5123.12'

1630'

2064'

Top of  
Hole

**25**

**WELL LOCATION:**  
**BENZEL FEDERAL 24-13G (F25NWB)**  
ELEV. UNGRADED GROUND = 5828.5'

1974 County  
Surveyor Cap

1981 Cap

1981 Cap  
LS 15846

1981 Cap  
LS 15846

1981 Cap  
LS 15846

2644.12' (Meas.)

S89°40'53"W - 2667.13' (Meas.)

S88°10'49"W

N89°51'W - 80.24 (G.L.O.)

NORTH (G.L.O.)

N00°57'13"W - 2633.28' (Meas.)

N00°49'58"W - 2634.01' (Meas.)

N00°59'58"W - 2598.15' (Meas.)

N00°05'35"W - 2597.84' (Meas.)



= SECTION CORNERS LOCATED

Basis of elevation is the Rifle 2 Triangulation  
Station. 39°31'53.80" N Lat. & 107°47'07.78" W  
Long. (NAD 83). Elevation = 5323.1' (NAVDS88).

**NAD 83 (SURFACE LOCATION)**

LATITUDE = 39°30'01.01"  
(39.500281)

LONGITUDE = 107°43'34.75"  
(107.726319)

**ENCANA OIL & GAS (USA) INC**

WELL LOCATION, BENZEL FEDERAL 24-13G  
(F25NWB), LOCATED AS SHOWN IN THE SE  
1/4 NW 1/4 OF SECTION 25, T6S, R93W,  
6th P.M. GARFIELD COUNTY, COLORADO.



**NOTES:**

1. Well footages are measured at right angles to the Section Lines.
2. Bearings are based on Global Positioning Satellite observations.
3. G.P.S. Operator:  
C.D. SLAUGH, (PDOP) = 2.4

**IMPROVEMENT NOTE:**

See addendum to legal plat (sheet 2v)  
for visible improvements within 400' of  
the proposed well pad.

THIS IS TO CERTIFY THAT THE ABOVE PLAT WAS  
PREPARED FROM FIELD NOTES OF SURVEYS  
MADE BY ME OR UNDER MY SUPERVISION. THE LOCATION  
HAS BEEN STAKED ON THE GROUND AS SHOWN ON THE  
PLAT, AND THAT THE SAME ARE TRUE AND CORRECT  
TO THE BEST OF MY KNOWLEDGE AND BELIEF.

*[Signature]* # 30125  
REGISTERED LAND SURVEYOR  
REGISTRATION NO. 03-24-11  
STATE OF COLORADO

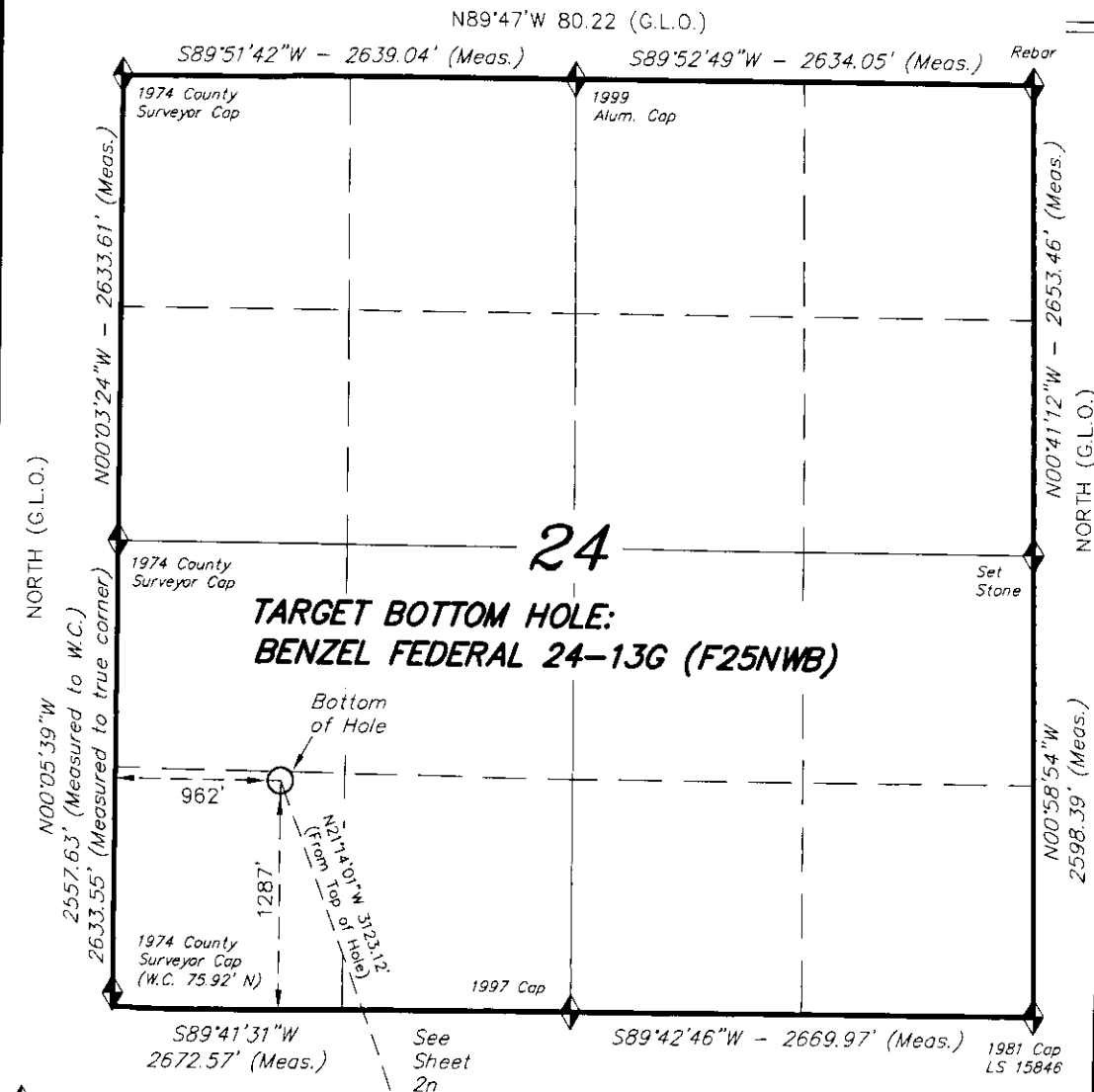
**TRI STATE LAND SURVEYING & CONSULTING**

180 NORTH VERNAL AVE. - VERNAL, UTAH 84078  
(435) 781-2501

DATE SURVEYED: 11-08-10	SURVEYED BY: C.D.S.	SHEET <b>2n</b> OF 11
DATE DRAWN: 02-28-11	DRAWN BY: L.C.S.	
REVISED: L.C.S. 03-24-11	SCALE: 1" = 1000'	

**T6S, R93W, 6th P.M.**

**ENCANA OIL & GAS (USA) INC**



TARGET BOTTOM HOLE, BENZEL FEDERAL 24-13G (F25NWB), LOCATED AS SHOWN IN THE SW 1/4 SW 1/4 OF SECTION 24, T6S, R93W, 6th P.M. GARFIELD COUNTY, COLORADO.



**NOTES:**

1. Well footages are measured at right angles to the Section Lines.
2. Bearings are based on Global Positioning Satellite observations.

THIS IS TO CERTIFY THAT THE ABOVE PLAT WAS PREPARED FROM FIELD NOTES OF SURVEYS MADE BY ME OR UNDER MY SUPERVISION. THE LOCATION HAS BEEN STAKED ON THE GROUND AS SHOWN ON THE PLAT, AND THAT THE SAME ARE TRUE AND CORRECT TO THE BEST OF MY KNOWLEDGE AND BELIEF.

REGISTERED LAND SURVEYOR  
REGISTRATION NO. 30125  
STATE OF COLORADO

**TRI STATE LAND SURVEYING & CONSULTING**  
180 NORTH VERNAL AVE. — VERNAL, UTAH 84078  
(435) 781-2501

DATE SURVEYED: 11-08-10	SURVEYED BY: C.D.S.	SHEET <b>2nn</b> OF 11
DATE DRAWN: 02-28-11	DRAWN BY: L.C.S.	
REVISED: L.C.S. 03-24-11	SCALE: 1" = 1000'	

◆ = SECTION CORNERS LOCATED

Basis of elevation is the Rifle 2 Triangulation Station. 39°31'53.80" N Lat. & 107°47'07.78" W Long. (NAD 83). Elevation = 5323.1' (NAVD88).