

OPERATOR: WIEPKING - FULLERTON ENERGY LLC
WELL NAME: MAHALO 1

TEST NO: 1
TICKET NO: 2853

Contractor Murfin Drilling
Rig No. 25
Spot NW/NW
Sec 29
Twp 10 S
Rng 55 W
Field Great Plains
County Lincoln
State Colorado
Elevation 5220' KB - 5210' GL
Formation Lower Lansing/Upper Marmington

Surface Choke 1"
Bottom Choke 5/8"
Hole Size 7 7/8"
Core Hole Size
DP Size & Wt 4 1/2" 16.60
Wt Pipe
ID of DC 2 1/4"
Length of DC 543'
Total Depth 6977'
Type of Test Open Hole Dst
Interval 6927' - 6977'

Mud Type Chemical/Gel
Weight 9.0
Viscosity 75
Water Loss 8.8
Filter Cake
RW @ Deg F
Chlorides Ppm
Co. Rep. Gregg Smith
Tester Mark Green

Pipe Recovery:

4838' Gas above fluid
362' Total fluid = 1.78 bbl., consisting of:
90' Oil = 0.44 bbl.
90' Oil cut mud = 0.44 bbl.
91' Oil = 0.45 bbl.
91' Oil & mud cut water = 0.45 bbl.

Properties:

Surface blow:

Pre-Flow: Began with a surface blow, increased to bottom of bucket at 9 1/2 minutes and continued to increase to 8.5 oz and remained thru flow period.
Final Flow: Began with a strong blow, increased to 10.0 oz at 4 minutes, 11.0 oz at 11 minutes, decreased to 9.0 oz at 20 minutes and remained thru flow period.

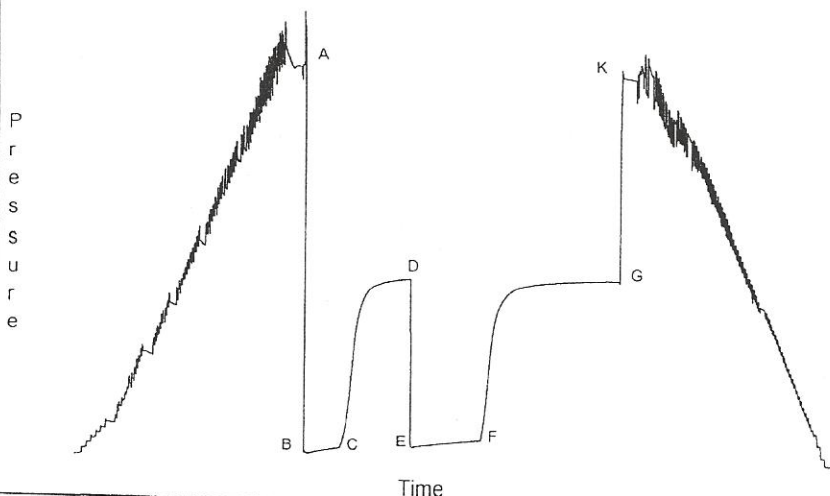
Downhole Sampler:

Pressure in Sampler 140 psig
Volume of Sampler 2050 cc
Volume of Sample 1450 cc
Oil: 550 cc
Water: Muddy Water 900 cc
Mud: -- cc
Gas: 0.88 cu ft
Other: 0
Rw:
Chlorides:
Gas/Oil Ratio 256/1 cu.-ft./bbl.
Gravity 35.0 API @ 60 Deg F

Opened Tool @ 01:05 hrs on 04/21/2011

	Reported	Corrected	
Flow 1	30	30	min
Shut-in 1	60	59	min
Flow 2	60	60	min
Shut-in 2	121	116	min

Downhole Pressure Chart



Downhole Pressure Data

Recorder Type JMCO Memory Recorder
No. 30024 Cap 10000 psi
Depth 6904 ft.
Inside X Outside
Psi(a) Deg (f)
Initial Hydrostatic [A] 3216
Final Hydrostatic [K] 3130
Initial Flow 1 [B] 46 160
Final Flow 1 [C] 95 164
Initial Flow 2 [E] 111 165
Final Flow 2 [F] 177 169
Shut-in 1 [D] 1510 165
Shut-in 2 [G] 1518 170
Maximum Temperature 170

OPERATOR: WIEPKING - FULLERTON ENERGY LLC
WELL NAME: MAHALO 1

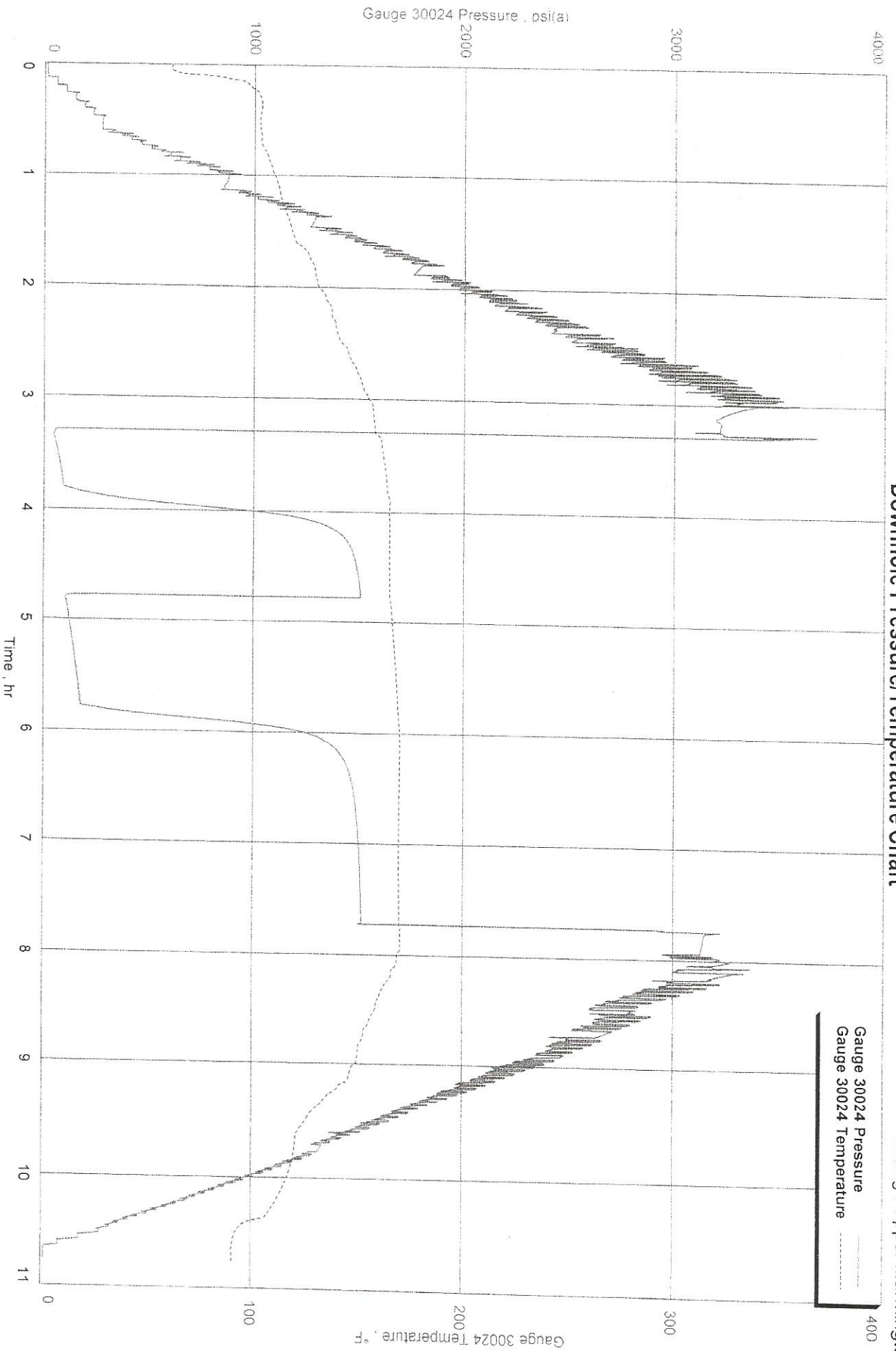
FORMATION: LANSING / MARMINGTON
INTERVAL: 6927' - 6977'

TEST NO: 1
DATE: 04/21/2011



Downhole Pressure/Temperature Chart

Mahalo 1, Dst 1
Formation: Lower Lansing / Upper Marmington



Wiepking - Fullerton Energy LLC

Interval: 6927' - 6977'

Diagnostic Plot - Shut In 1

Radial

Mahalo 1, Dst 1

Formation: Lower Lansing / Upper Marmingto

1600

1500

Radial Solution

p * 1571.6 psi(a)

1400

1300

1200

1100

1000

900

p (psi(a))

800

700

600

500

400

300

200

100

0

102

9

8

7

6

5

4

3

2

101

9

8

7

6

5

4

3

2

1

Radial Horner Time $((t_c + \Delta t) / \Delta t)$ (h)

Pdata

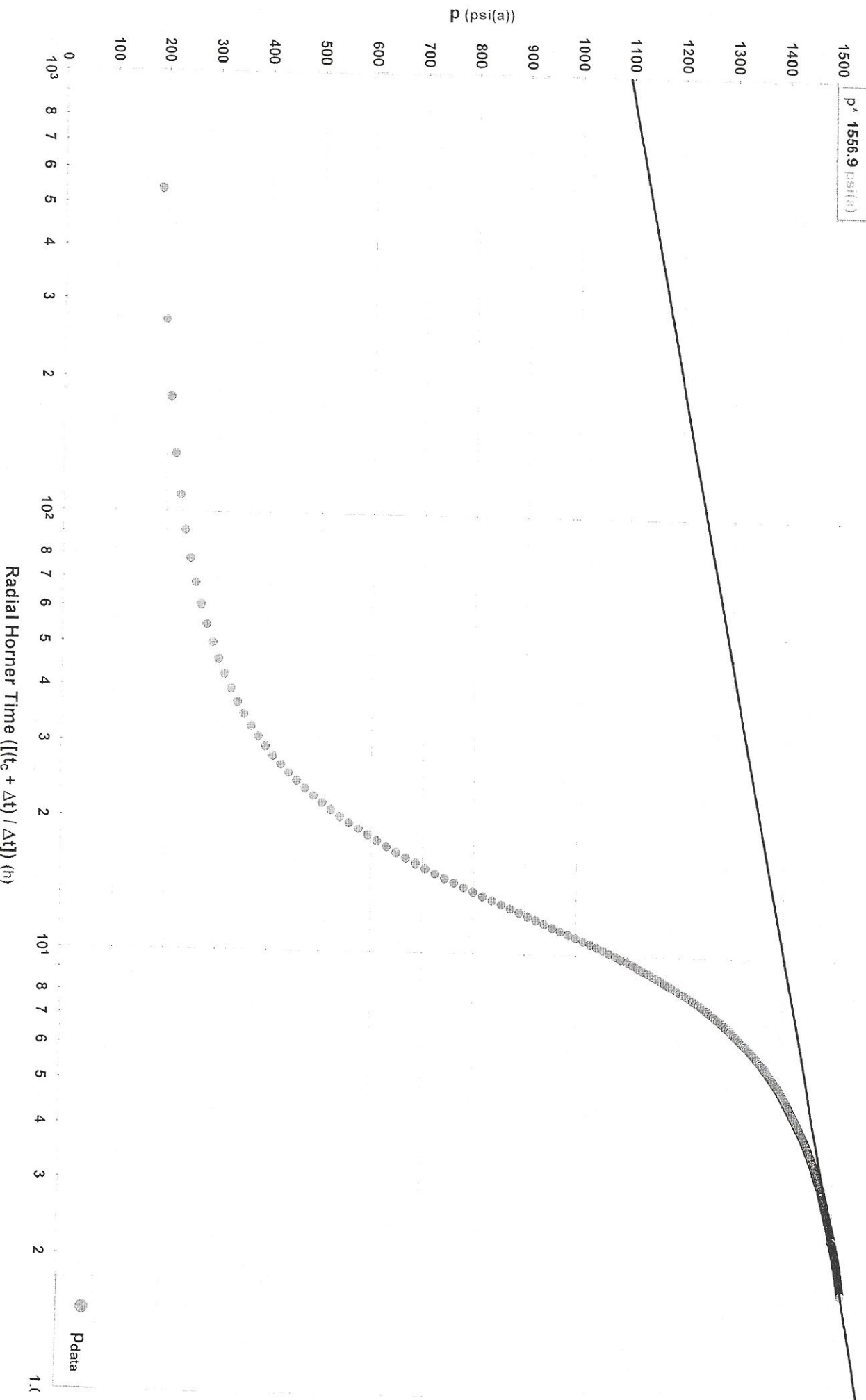
Wiepking - Fullerton Energy LLC
Interval: 6927' - 6977'

Diagnostic Plot - Shut In 2

Radial

Mahalo 1, Dst 1
Formation: Lower Lansing / Upper Marmingto

Radial Solution
p* 1556.9 psi(a)

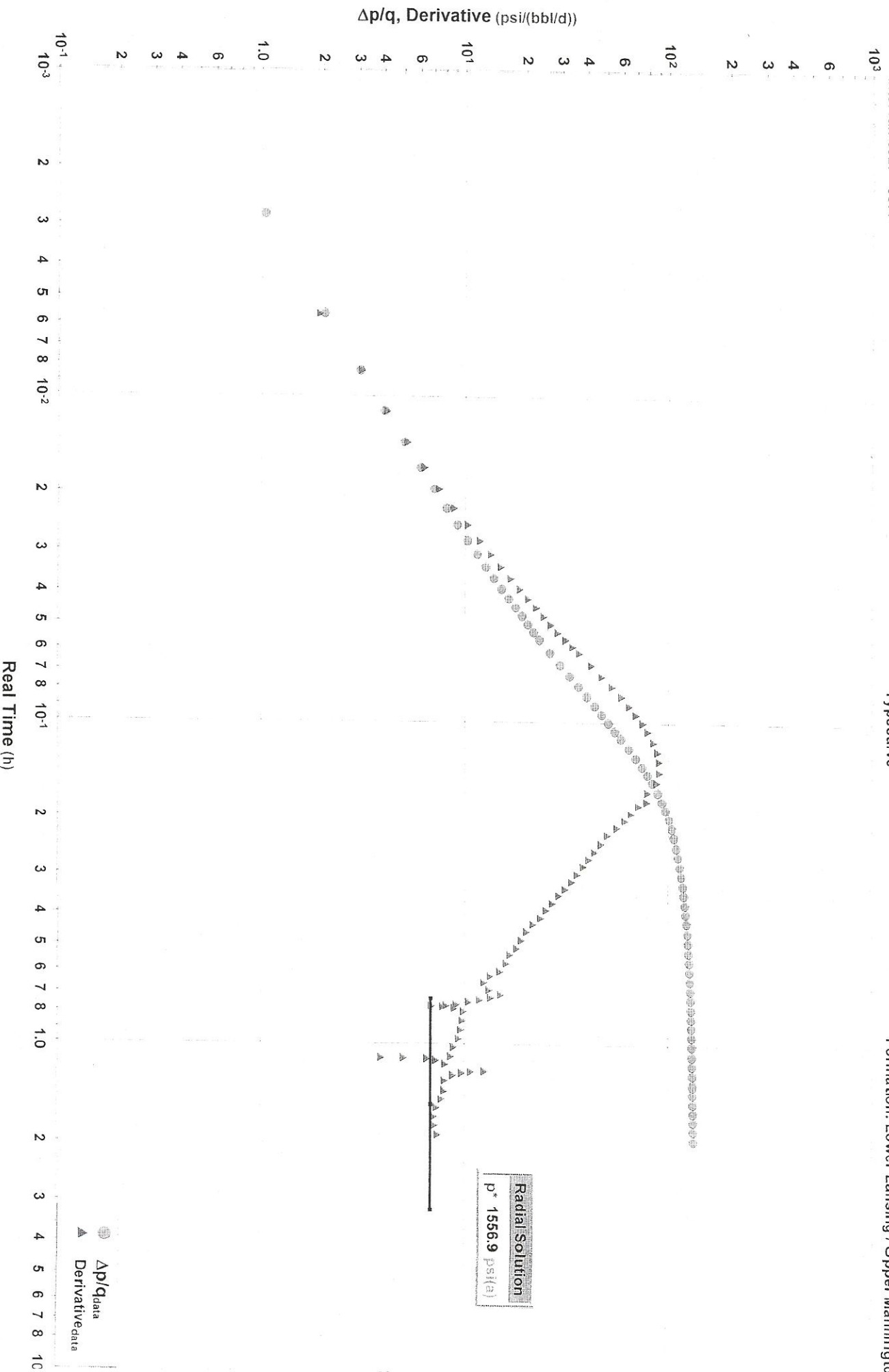


Wepking - Fullerton Energy LLC
Interval: 6927' - 6977'

Diagnostic Plot - Shut In 2

Typecurve

Mahalo 1, Dst 1
Formation: Lower Lansing / Upper Marmingto



OPERATOR: WIEPKING - FULLERTON ENERGY LLC
WELL NAME: MAHALO 1

TEST NO: 2
TICKET NO: 2854

Contractor Murfin Drilling
Rig No. 25
Spot NW/NW
Sec 29
Twp 10 S
Rng 55 W
Field Great Plains
County Lincoln
State Colorado
Elevation 5220' KB - 5210' GL
Formation Cherokee "A"

Surface Choke 1"
Bottom Choke 5/8"
Hole Size 7 7/8"
Core Hole Size
DP Size & Wt 4 1/2" 16.60
Wt Pipe
ID of DC 2 1/4"
Length of DC 543'
Total Depth 7130'
Type of Test Open Hole Dst
Interval 7090' - 7130'

Mud Type Chemical/Gel
Weight 9.1
Viscosity 88
Water Loss 7.6
Filter Cake
RW @ Deg F
Chlorides Ppm
Co. Rep. Gregg Smith
Tester Mark Green

Pipe Recovery:

1038' Gas above fluid
542' Total fluid = 2.65 bbl., consisting of:
180' Mud w/trace of oil = 0.88 bbl.
362' Gas cut, muddy water = 1.77 bbl.

Properties:

Surface blow:

Pre-Flow: Began with a surface blow, increased to 3" at 10 minutes and 7" at 30 minutes.
Final Flow: Began with a surface blow, increased to 2" at 5 minutes, bottom of bucket at 20 minutes 10 oz at 40 minutes and remained thru flow period.

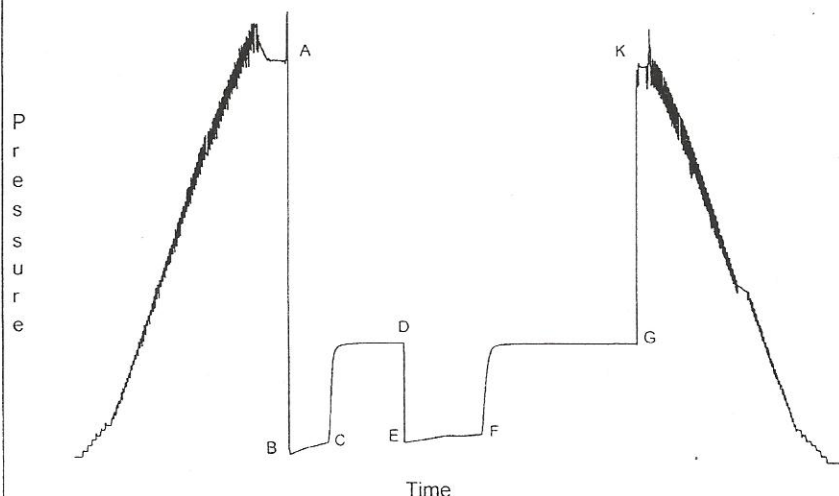
Downhole Sampler:

Pressure in Sampler 190 psig
Volume of Sampler 2050 cc
Volume of Sample 1400 cc
Oil: 25 cc
Water: 750 cc
Mud: 625 cc
Gas: 1.18 cu ft
Other: 0
Rw: 0.19 @ 65 deg F/0.08 @ res temp
Chlorides: 37,952 ppm NaCl, 23,071 ppm Cl.
Gas/Oil Ratio
Gravity API @ 60 Deg F

Opened Tool @ 11:55 hrs on 04/23/2011

	Reported	Corrected	
Flow 1	30	30	min
Shut-in 1	60	58	min
Flow 2	60	59	min
Shut-in 2	120	119	min

Downhole Pressure Chart



Downhole Pressure Data

Recorder Type JMCO Memory Recorder
No. 30024 Cap 10000 psi
Depth 7060 ft.
Inside X Outside
Psi(a) Deg (f)
Initial Hydrostatic [A] 3295
Final Hydrostatic [K] 3248
Initial Flow 1 [B] 50 158
Final Flow 1 [C] 144 166
Initial Flow 2 [E] 154 167
Final Flow 2 [F] 227 172
Shut-in 1 [D] 987 167
Shut-in 2 [G] 989 172
Maximum Temperature 172

OPERATOR: WIEPKING - FULLERTON ENERGY LLC
WELL NAME: MAHALO 1
FORMATION: CHEROKEE "A"
INTERVAL: 7090' - 7130'

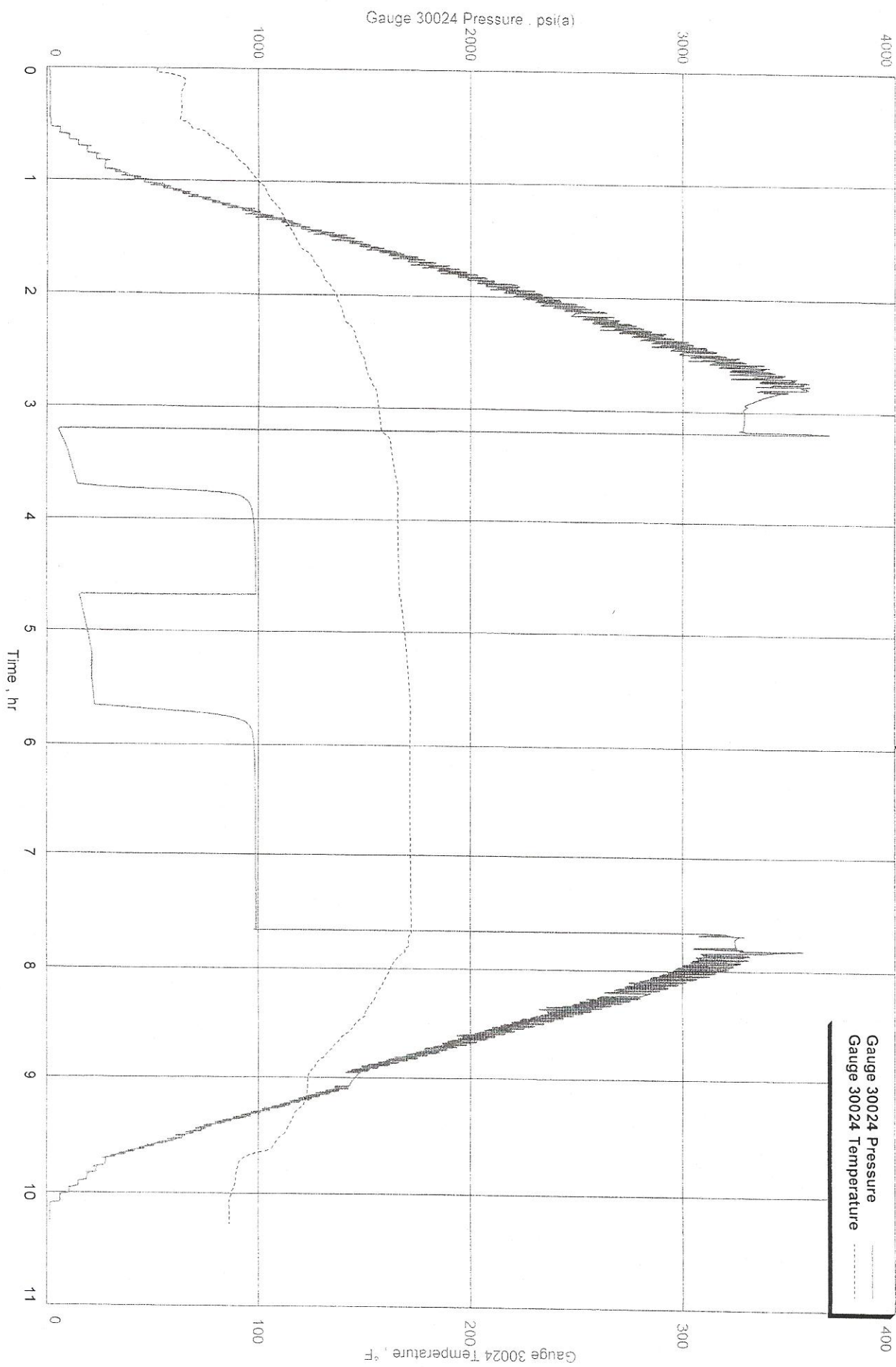
TEST NO: 2
DATE: 04/23/2011



Wiepking - Fullerton Energy LLC
Interval: 7090' - 7130'

Downhole Pressure/Temperature Chart

Mahalo 1, Dst 2
Formation: Cherokee "A"

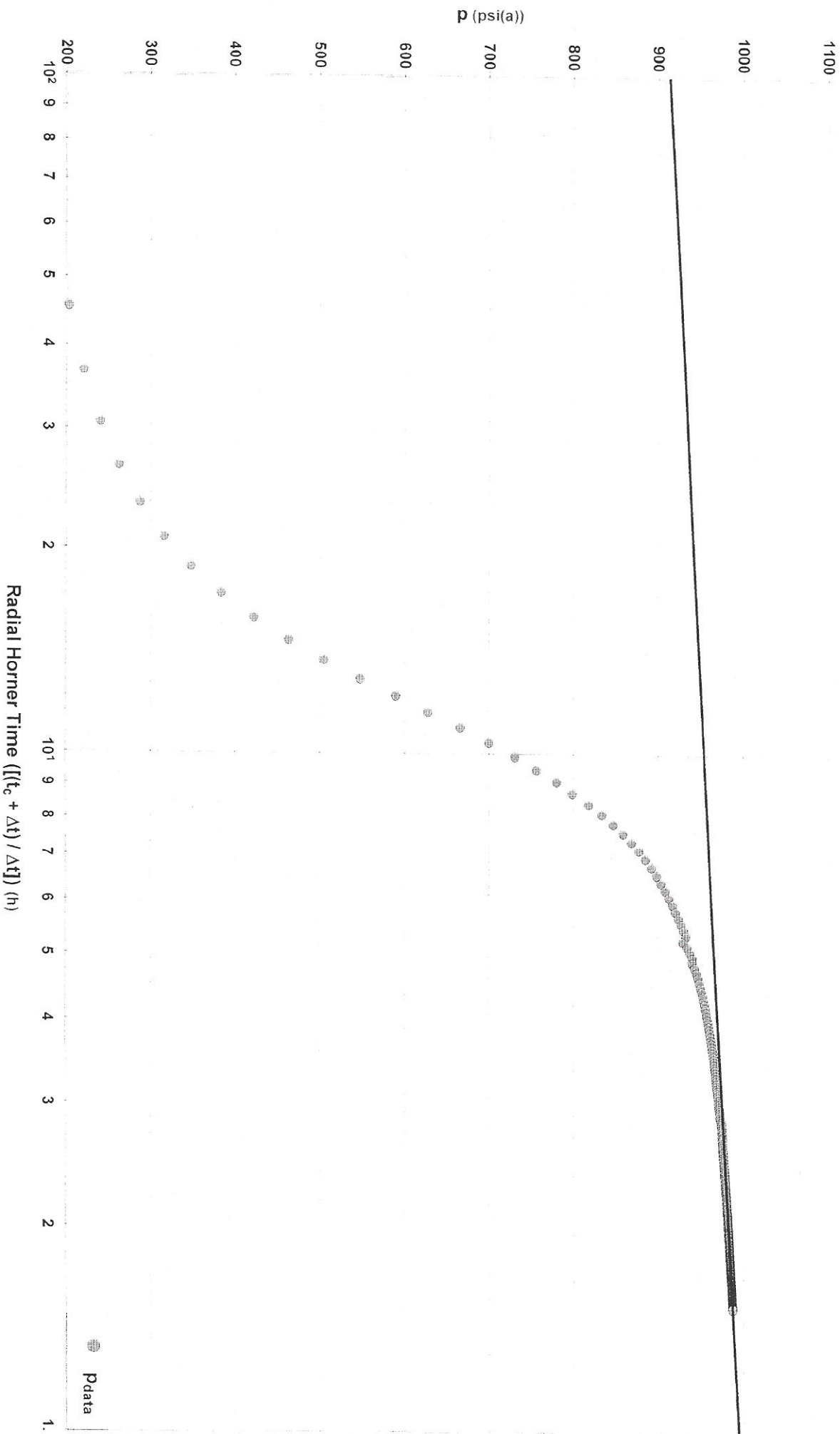


Wiepking - Fullerton Energy LLC
Interval: 7090' - 7130'

Diagnostic Plot - Shut In 1

Mahalo 1, Dst 2
Formation: Cherokee "A"

Radial Solution
p* 994.3 psi(a)



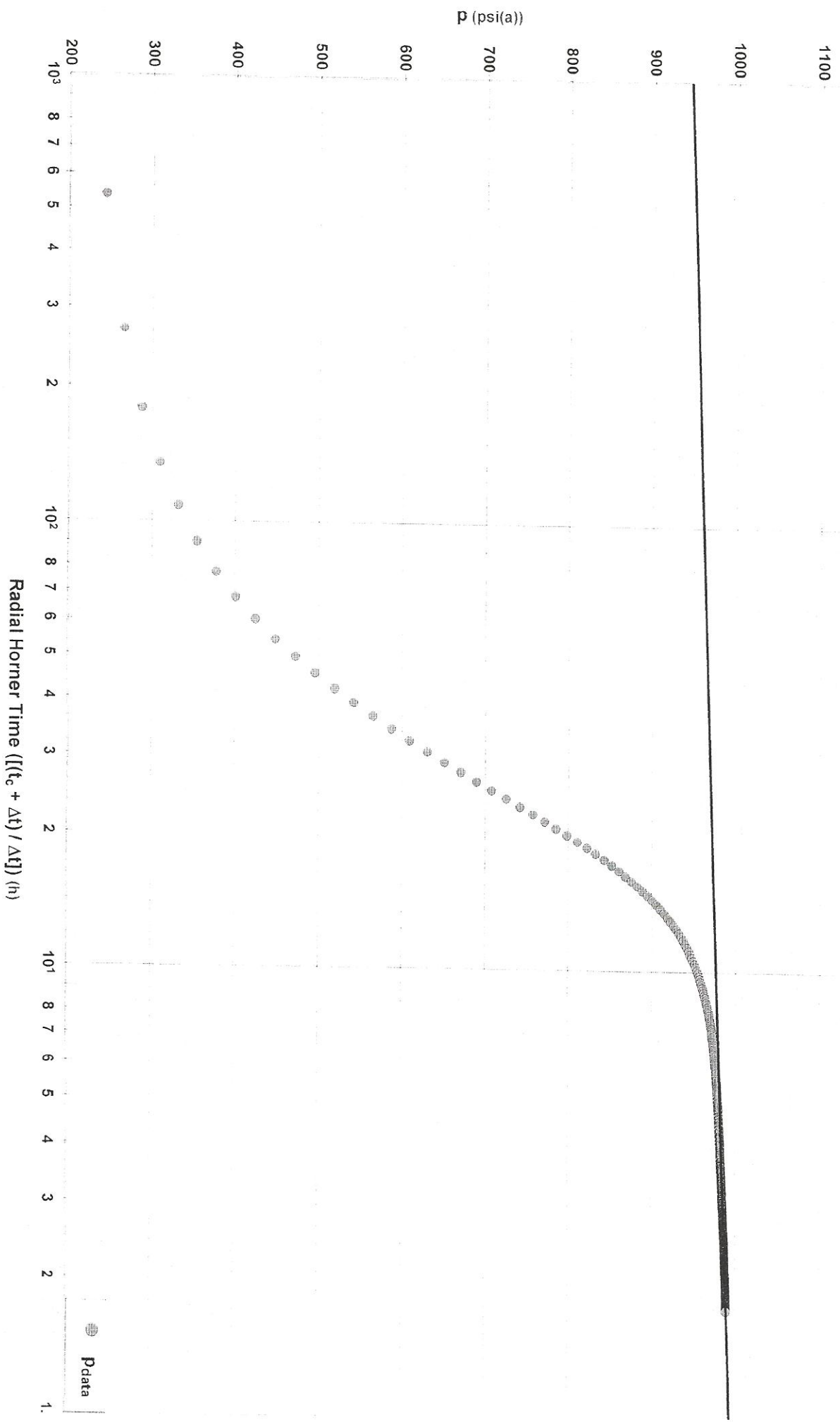
Wiepking - Fullerton Energy LLC
Interval: 7090' - 7130'

Diagnostic Plot - Shut In 2

Radial

Mahalo 1, Dst 2
Formation: Cherokee "A"

Radial Solution
p* 993.2 (psi(a))



Wiepking - Fullerton Energy LLC
Interval: 7090' - 7130'

Diagnostic Plot - Shut In 2

Mahalo 1, Dst 2
Formation: Cherokee "A"

