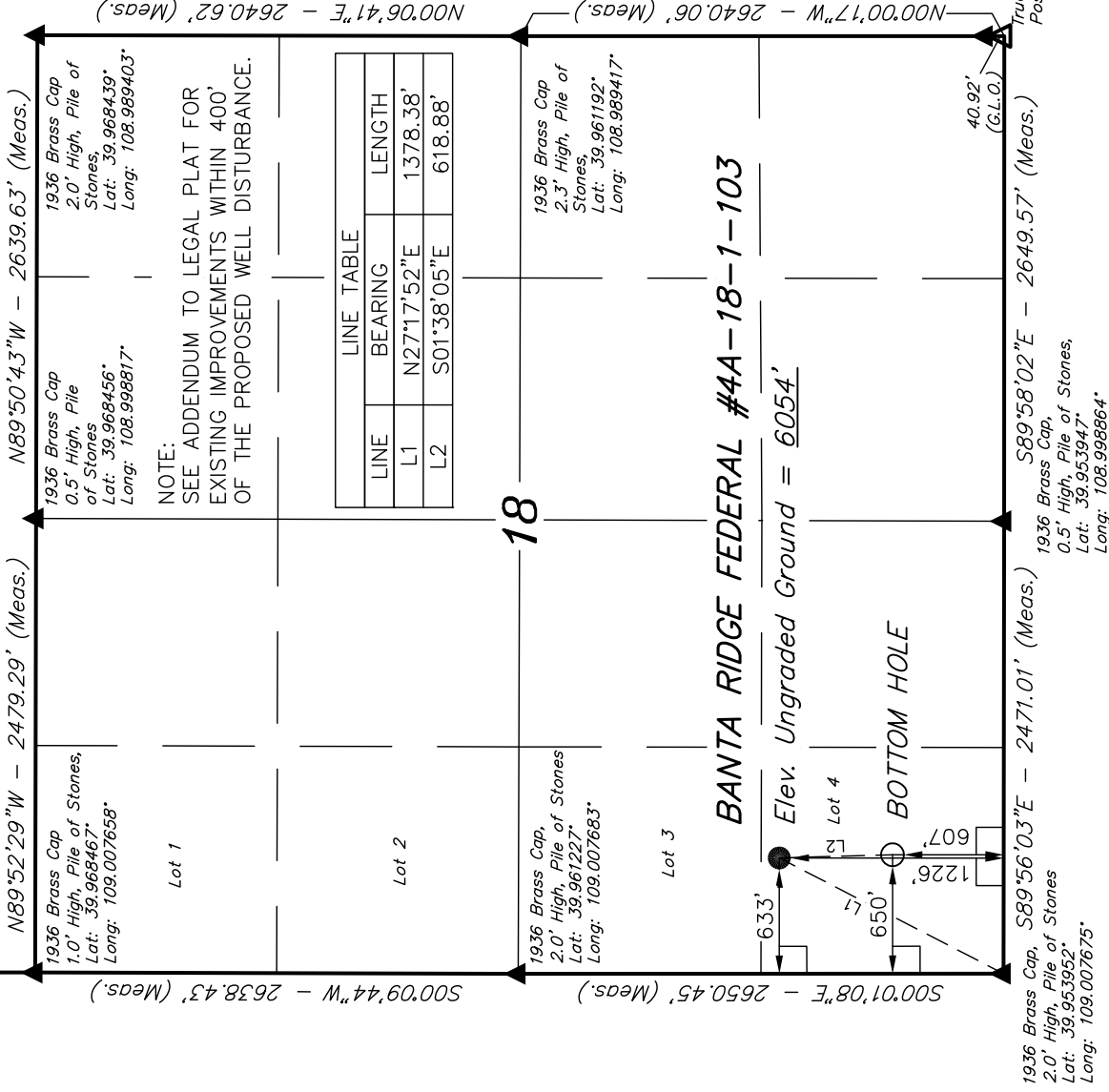


T1S, R103W, 6th P.M.

FOUNDATION ENERGY MANAGEMENT

Well location, BANTA RIDGE FEDERAL #4A-18-1-103, located as shown in LOT 4 of Section 18, T1S, R103W, 6th P.M., Rio Blanco County, Colorado.

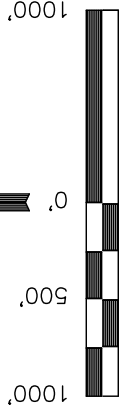


BASIS OF ELEVATION

SPOT ELEVATION AT THE W.C. WEST 1/4 CORNER OF SECTION 9, T1S, R103W, 6th P.M. TAKEN FROM THE BANTY RIDGE QUADRANGLE, COLORADO, RIO BLANCO COUNTY, 7.5 MINUTE QUAD (TOPOGRAPHIC MAP) PUBLISHED BY THE UNITED STATES DEPARTMENT OF THE INTERIOR, GEOLOGICAL SURVEY. SAID ELEVATION IS MARKED AS BEING 5876 FEET.

BASIS OF BEARINGS

BASIS OF BEARINGS IS A G.P.S. OBSERVATION.



S C A L E

CERTIFICATE

THIS IS TO CERTIFY THAT THE ABOVE PLAT WAS PREPARED FROM FIELD NOTES OF ACTUAL SURVEYS MADE BY ME OR UNDER MY SUPERVISION AND THAT THE SAME ARE TRUE AND CORRECT TO THE BEST OF MY KNOWLEDGE AND BELIEF.

W.C.
1936 Brass Cap
1.0' High,
Lat: 39.954058°
Long: 108.989414°

REVISED: 03-09-11 M.D.

UTIAH ENGINEERING & LAND SURVEYING

85 SOUTH 200 EAST - VERNAL, UTAH 84078

(435) 789-1017

SCALE 1" = 1000'

DATE SURVEYED: 01-27-11

DATE DRAWN: 02-10-11

PARTY

G.S. G.B. M.D.

REFERENCES

G.L.O. PLAT

WEATHER

COLD

FILE

FOUNDATION ENERGY MANAGEMENT

LEGEND:

— = 90° SYMBOL

● = PROPOSED WELL HEAD.

▲ = SECTION CORNERS LOCATED.

△ = SECTION CORNERS

RE-ESTABLISHED.

(Not Set on Ground.)

NAD 83 (TARGET BOTTOM HOLE)

LATITUDE = 39°57'20.22" (39.955617)

LONGITUDE = 109°00'19.29" (109.005358)

NAD 27 (TARGET BOTTOM HOLE)

LATITUDE = 39°57'20.33" (39.955647)

LONGITUDE = 109°00'16.90" (109.004694)

NAD 83 (SURFACE LOCATION)

LATITUDE = 39°57'26.33" (39.957314)

LONGITUDE = 109°00'19.52" (109.005422)

NAD 27 (SURFACE LOCATION)

LATITUDE = 39°57'26.44" (39.957344)

LONGITUDE = 109°00'17.13" (109.004758)

PDOP = 1.8

FOUNDATION ENERGY MANAGEMENT

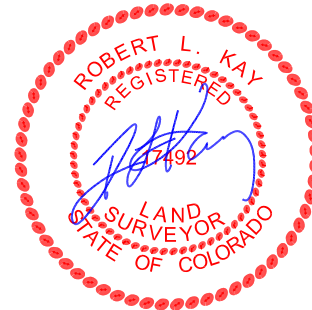
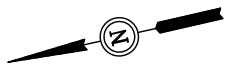
ADDENDUM TO LEGAL PLAT FOR

BANTA RIDGE FEDERAL #4A-18-1-103,
#5-18-1-103, & #6-18-1-103
SECTION 18, T1S, R103W, 6th P.M.
LOT 4

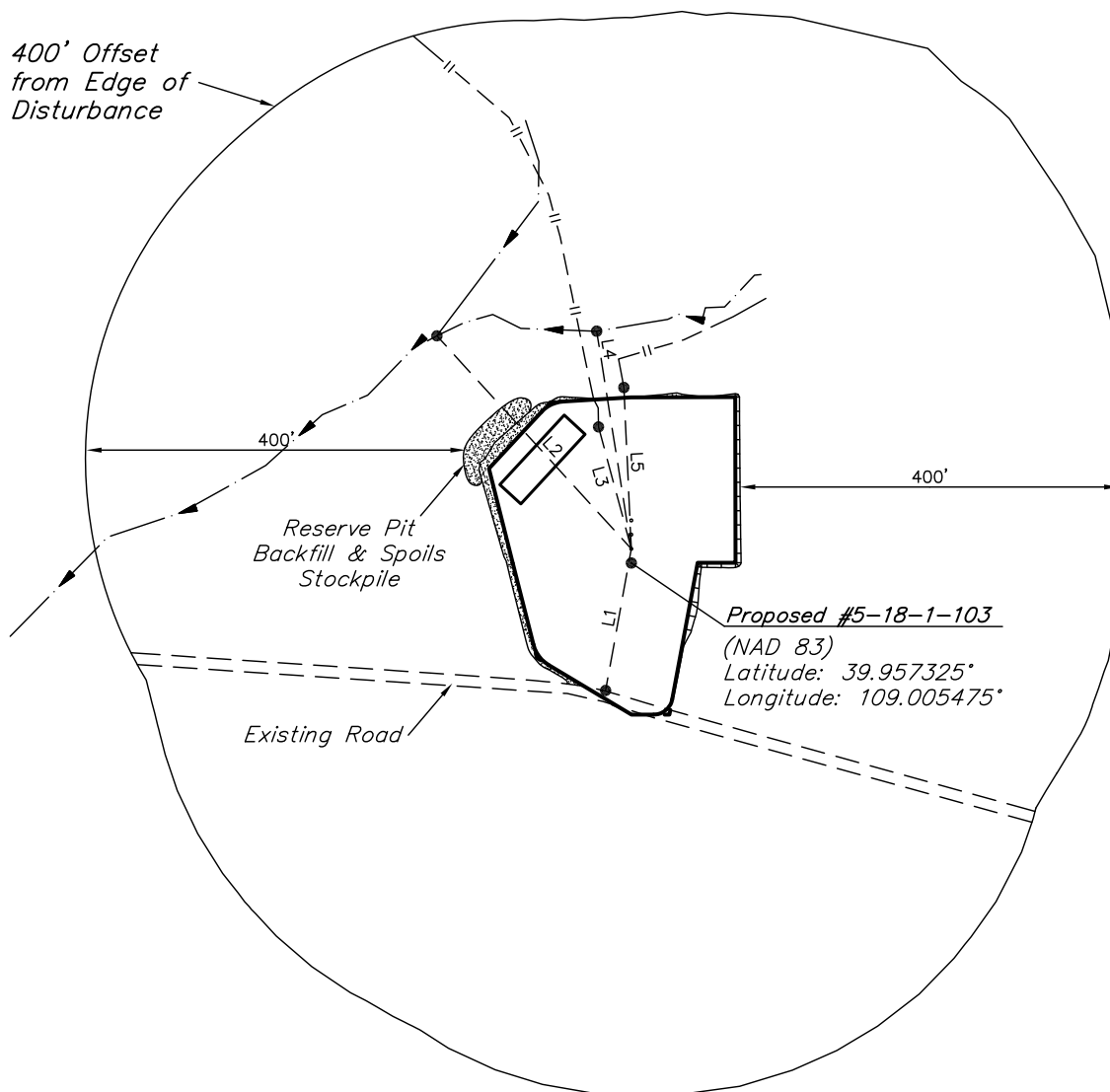
SCALE: 1" = 200'

DATE: 02-15-11

DRAWN BY: M.D.



400' Offset
from Edge of
Disturbance



LINE TABLE

LINE	BEARING	LENGTH	FEATURE
L1	N66°48'50"W	151.95'	ACCESS ROAD
L2	N60°31'31"E	304.49'	DRAINAGE
L3	N87°52'00"E	133.35'	PIPELINE
L4	S86°07'49"E	232.75'	DRAINAGE
L5	S79°44'05"E	170.54'	PIPELINE

UINTAH ENGINEERING & LAND SURVEYING
85 So. 200 East * Vernal, Utah 84078 * (435) 789-1017