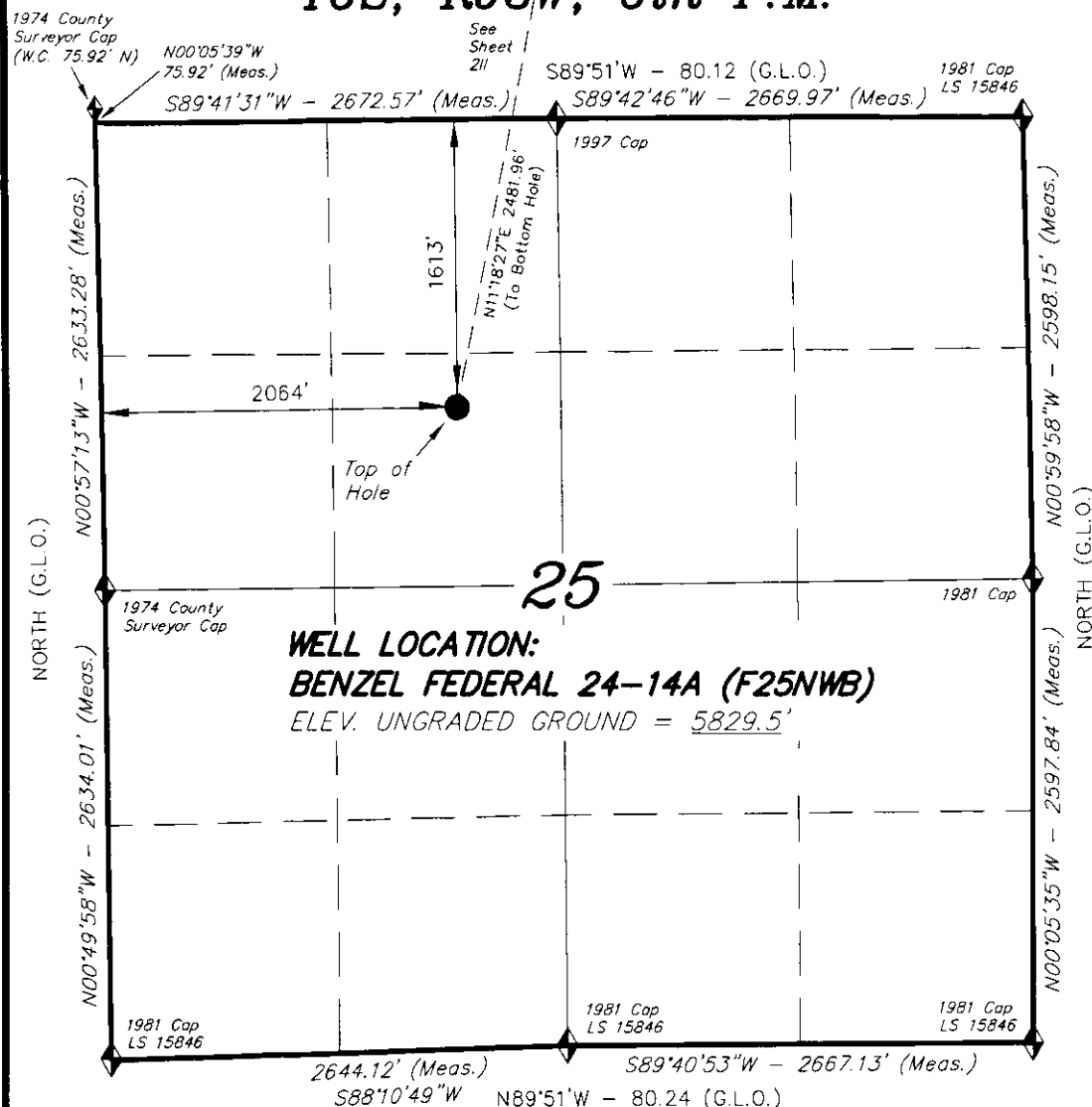


T6S, R93W, 6th P.M.



WELL LOCATION:
BENZEL FEDERAL 24-14A (F25NWB)
 ELEV. UNGRADED GROUND = 5829.5'

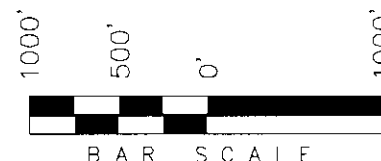
◆ = SECTION CORNERS LOCATED

Basis of elevation is the Rifle 2 Triangulation Station. 39°31'53.80" N Lat. & 107°47'07.78" W Long. (NAD 83). Elevation = 5323.1' (NAVD88).

NAD 83 (SURFACE LOCATION)	
LATITUDE =	39°30'01.26" (39.500351)
LONGITUDE =	107°43'34.65" (107.726290)

ENCANA OIL & GAS (USA) INC

WELL LOCATION, BENZEL FEDERAL 24-14A (F25NWB), LOCATED AS SHOWN IN THE SE 1/4 NW 1/4 OF SECTION 25, T6S, R93W, 6th P.M. GARFIELD COUNTY, COLORADO.



NOTES:

1. Well footages are measured at right angles to the Section Lines.
2. Bearings are based on Global Positioning Satellite observations.
3. G.P.S. Operator: C.D. SLAUGH, (PDOP) = 2.4

IMPROVEMENT NOTE:

See addendum to legal plat (sheet 2v) for visible improvements within 400' of the proposed well pad.

THIS IS TO CERTIFY THAT THE ABOVE PLAT WAS PREPARED FROM FIELD NOTES OF SURVEYS MADE BY ME OR UNDER MY SUPERVISION. THE LOCATION HAS BEEN STAKED ON THE GROUND AS SHOWN ON THE PLAT, AND THAT THE SAME ARE TRUE AND CORRECT TO THE BEST OF MY KNOWLEDGE AND BELIEF.

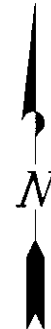
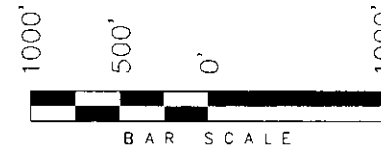
[Signature]
 # 30125
 REGISTERED LAND SURVEYOR
 REGISTRATION No. 30125
 STATE OF COLORADO

TRI STATE LAND SURVEYING & CONSULTING
 180 NORTH VERNAL AVE. - VERNAL, UTAH 84078
 (435) 781-2501

DATE SURVEYED: 11-08-10	SURVEYED BY: C.D.S.	SHEET 21 OF 11
DATE DRAWN: 02-28-11	DRAWN BY: L.C.S.	
REVISED: L.C.S. 03-24-11	SCALE: 1" = 1000'	

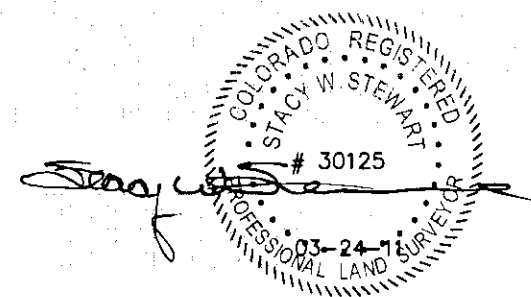
Journal of Management Education 30(6)p. 789-804
© The Author(s) 2006. Reprints and permissions:
<http://www.sagepub.com/journalsPermissions.nav>

TARGET BOTTOM HOLE, BENZEL FEDERAL
24-14A (F25NWB), LOCATED AS SHOWN
IN THE SE 1/4 SW 1/4 OF SECTION 24,
T6S, R93W, 6th P.M. GARFIELD COUNTY,
COLORADO.



NOTES:

1. Well footages are measured at right angles to the Section Lines.
2. Bearings are based on Global Positioning Satellite observations.



180 NORTH VERNAL AVE. - VERNAL, UTAH 84078
(435) 781-2501

211

OF 11

