

LEGEND:

 PROPOSED LOCATION

SWEPI LP

DAWSON CREEK #1-25
SECTION 25, T6N, R88W, 6th P.M.
2141' FNL 1589' FWL



Uintah Engineering & Land Surveying
85 South 200 East Vernal, Utah 84078
(435) 789-1017 * FAX (435) 789-1813

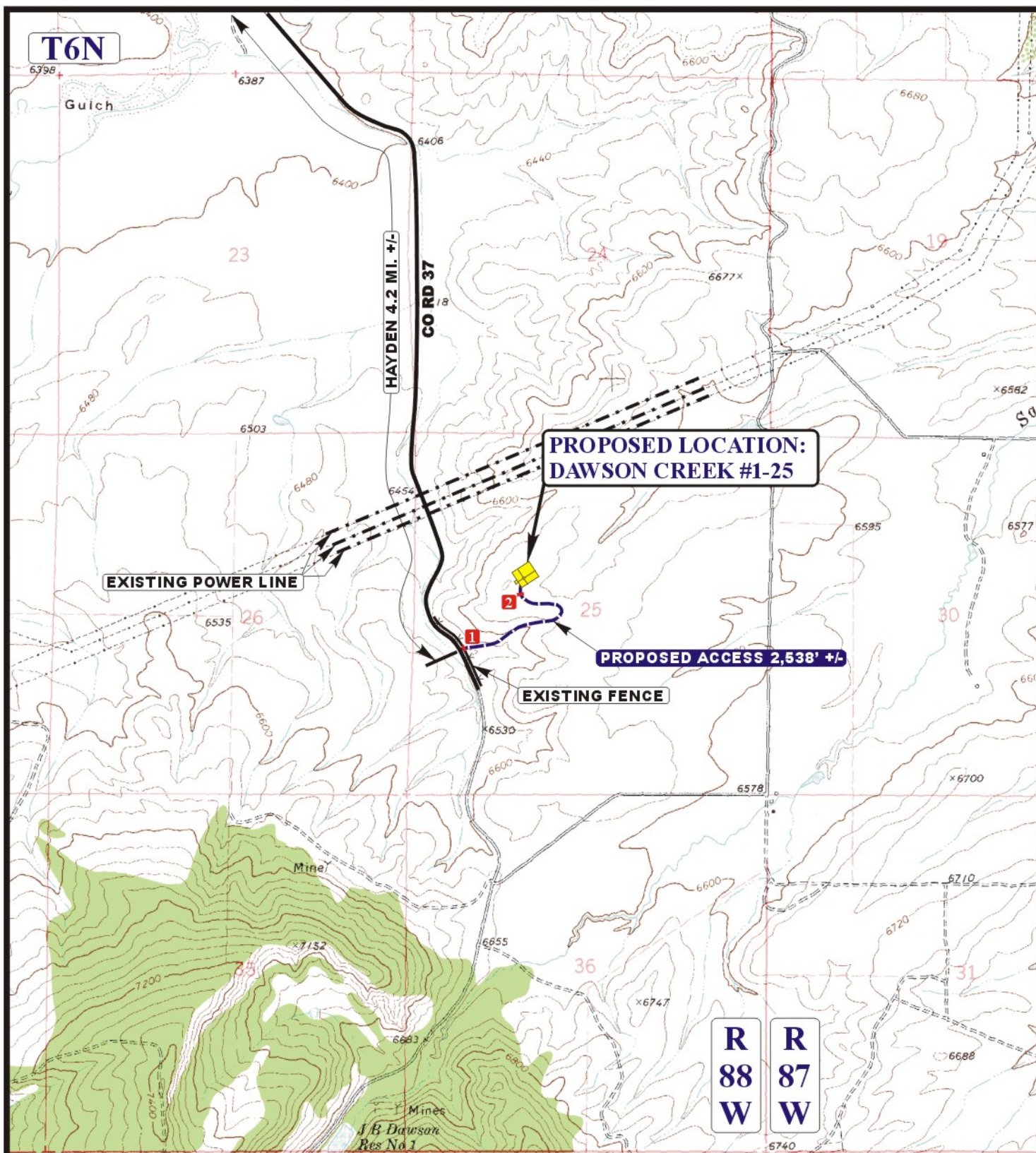


ACCESS ROAD
MAP

05 **24** **11**
MONTH DAY YEAR

SCALE: 1:100,000 DRAWN BY: Z.L. REVISED: 00-00-00





LEGEND:

- EXISTING ROAD
- PROPOSED ACCESS ROAD
- EXISTING FENCE
- EXISTING POWER LINE
- 1 INSTALL CATTLE GUARD
- 2 18" CMP REQUIRED

SWEPI LP

DAWSON CREEK #1-25
SECTION 25, T6N, R88W, 6th P.M.
2141' FNL 1589' FWL



Uintah Engineering & Land Surveying
 85 South 200 East Vernal, Utah 84078
 (435) 789-1017 * FAX (435) 789-1813



ACCESS ROAD
MAP

05 **24** **11**
 MONTH DAY YEAR

SCALE: 1" = 2000' DRAWN BY: Z.L. REVISED: 00-00-00

B
TOPO