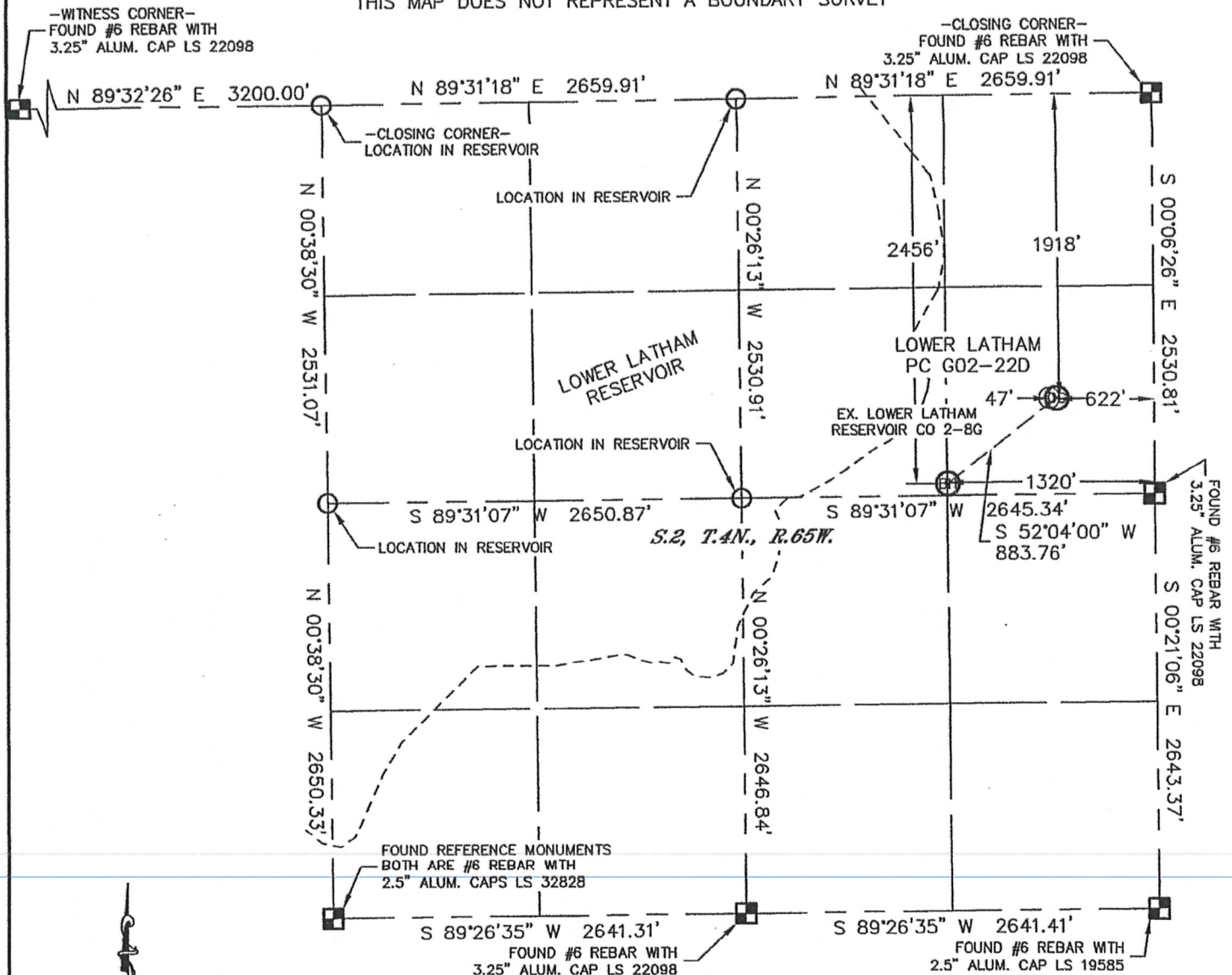


# WELL LOCATION CERTIFICATE

SECTION: 2  
TOWNSHIP: 4N  
RANGE: 65W

THIS MAP DOES NOT REPRESENT A BOUNDARY SURVEY



In accordance with a request from Brian Derosa with Noble Energy Inc. Lat40°, Inc. has determined the surface location of the LOWER LATHAM PC G02-22D to be 1918' from the NORTH line and 622' from the EAST line and the bottom hole to be 2456' from the NORTH line and 1320' from the EAST line as measured at right angles from the section lines of Section 2, Township 4 North, Range 65 West of the Sixth Principal Meridian, County of Weld, State of Colorado.

I hereby state that this Well Location Certificate was prepared by me, or under my direct supervision, that the fieldwork was completed on 3/17/11, for and on behalf of Noble Energy Inc. That this is not a Land Survey Plat or an Improvement Survey Plat, and that it is not to be relied upon for establishment of fence, building, or other future improvement lines.

## NOTE:

- 1) Bearings shown are Grid Bearings of the Colorado State Plane Coordinate System, North Zone, North American Datum 1983/2007. The lineal dimensions as contained herein are based upon the "U.S. Survey Foot."
- 2) Ground elevations are based on an observed GPS elevation (NAVD 1988 DATUM).
- 3) NEAREST EXISTING WELL: EX. LOWER LATHAM RESERVOIR CO 2-8G 47'
- 4) IMPROVEMENTS: See LOCATION DRAWING exhibit for all visible improvements within 400' of disturbed area.
- 5) SURFACE USE: RANGELAND, EX. WELL SITE
- 6) INSTRUMENT OPERATOR: ADAM KELLY

## SURFACE LOCATION

LATITUDE: 40.34319°N  
LONGITUDE: 104.62313°W  
PDOP: 1.6  
ELEV: 4692'  
1/4, 1/4: SE1/4NE1/4  
NEAREST PROPERTY LINE: 622' EAST

## BOTTOM HOLE

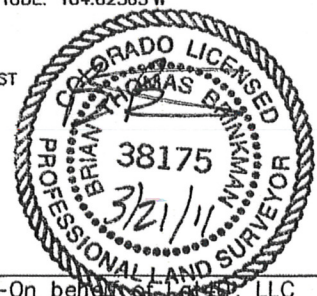
LATITUDE: 40.34171°N  
LONGITUDE: 104.62565°W

## NOTE

According to Colorado law, you must commence any legal action based upon any defect in this W.L.C. within three years after you discover such defect. In no event, may any action based upon any defect in this survey be commenced more than ten years after the date of the certificate shown hereon. (13-80-105 C.R.S.)

## LEGEND

- = ALIQUOT MONUMENT AS DESCRIBED
- = CALCULATED POSITION



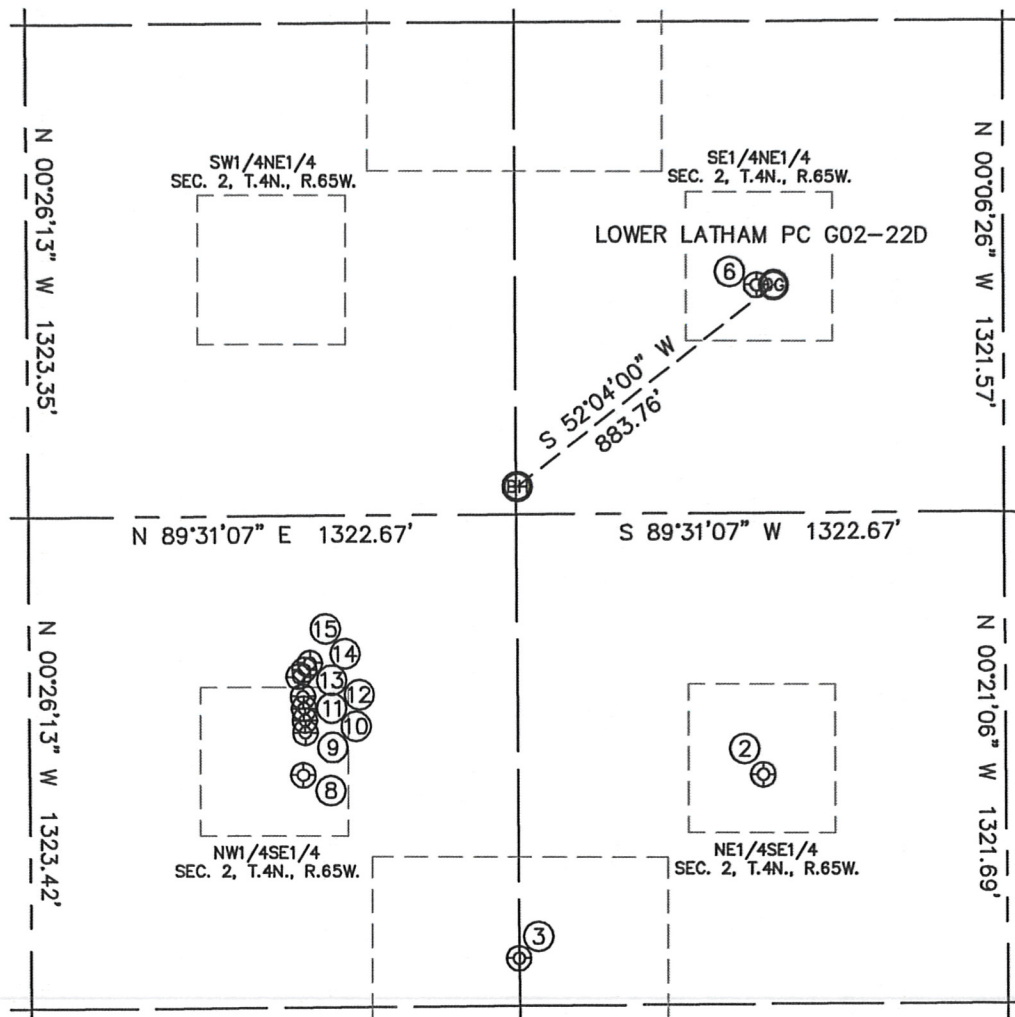
Brian T. Brinkman—On behalf of Lat40°, LLC  
Colorado Licensed Professional  
Land Surveyor No. 38175

PROJECT#: 2010060

# SITE SKETCH

## LOWER LATHAM PC G02-22D

SECTION: 2  
TOWNSHIP: 4N  
RANGE: 65W



②

LATHAM 2-1  
NE1/4SE1/4  
1941' FSL  
657' FEL  
LAT-40.33958°N  
LONG-104.62328°W  
PDOP: 2.9  
ELEV: 4711'

③

LOWER LATHAM 2-45  
NW1/4SE1/4  
1451' FSL  
1323' FEL  
LAT-40.33823°N  
LONG-104.62568°W  
PDOP: 3.3  
ELEV: 4688'

⑥

LOWER LATHAM  
RESERVOIR CO 2-8G  
SE1/4NE1/4  
1918' FNL  
669' FEL  
LAT-40.34319°N  
LONG-104.62330°W  
PDOP: 1.1  
ELEV: 4691'

⑧

LATHAM 2-42  
NW1/4SE1/4  
1949' FSL  
1904' FEL  
LAT-40.33960°N  
LONG-104.62775°W  
PDOP: 5.8  
ELEV: 4678'

⑨

LOWER LATHAM 2-13G  
NW1/4SE1/4  
2063' FSL  
1898' FEL  
LAT-40.33991°N  
LONG-104.62773°W  
PDOP: 2.9  
ELEV: 4677'

⑩

LOWER LATHAM 2-12G  
NW1/4SE1/4  
2096' FSL  
1899' FEL  
LAT-40.34000°N  
LONG-104.62773°W  
PDOP: 3.0  
ELEV: 4677'

⑪

LOWER LATHAM 2-5G  
NW1/4SE1/4  
2128' FSL  
1902' FEL  
LAT-40.34009°N  
LONG-104.62774°W  
PDOP: 2.1  
ELEV: 4678'

⑫

LOWER LATHAM 2-6G  
NW1/4SE1/4  
2160' FSL  
1905' FEL  
LAT-40.34018°N  
LONG-104.62775°W  
PDOP: 2.1  
ELEV: 4677'

⑬

USED G2-25  
NW1/4SE1/4  
2213' FSL  
1917' FEL  
LAT-40.34032°N  
LONG-104.62779°W  
PDOP: 3.0  
ELEV: 4677'

⑭

USED G2-20  
NW1/4SE1/4  
2232' FSL  
1901' FEL  
LAT-40.34038°N  
LONG-104.62774°W  
PDOP: 2.2  
ELEV: 4677'

⑮

USED G2-21  
NW1/4SE1/4  
2250' FSL  
1885' FEL  
LAT-40.34042°N  
LONG-104.62768°W  
PDOP: 3.1  
ELEV: 4677'

