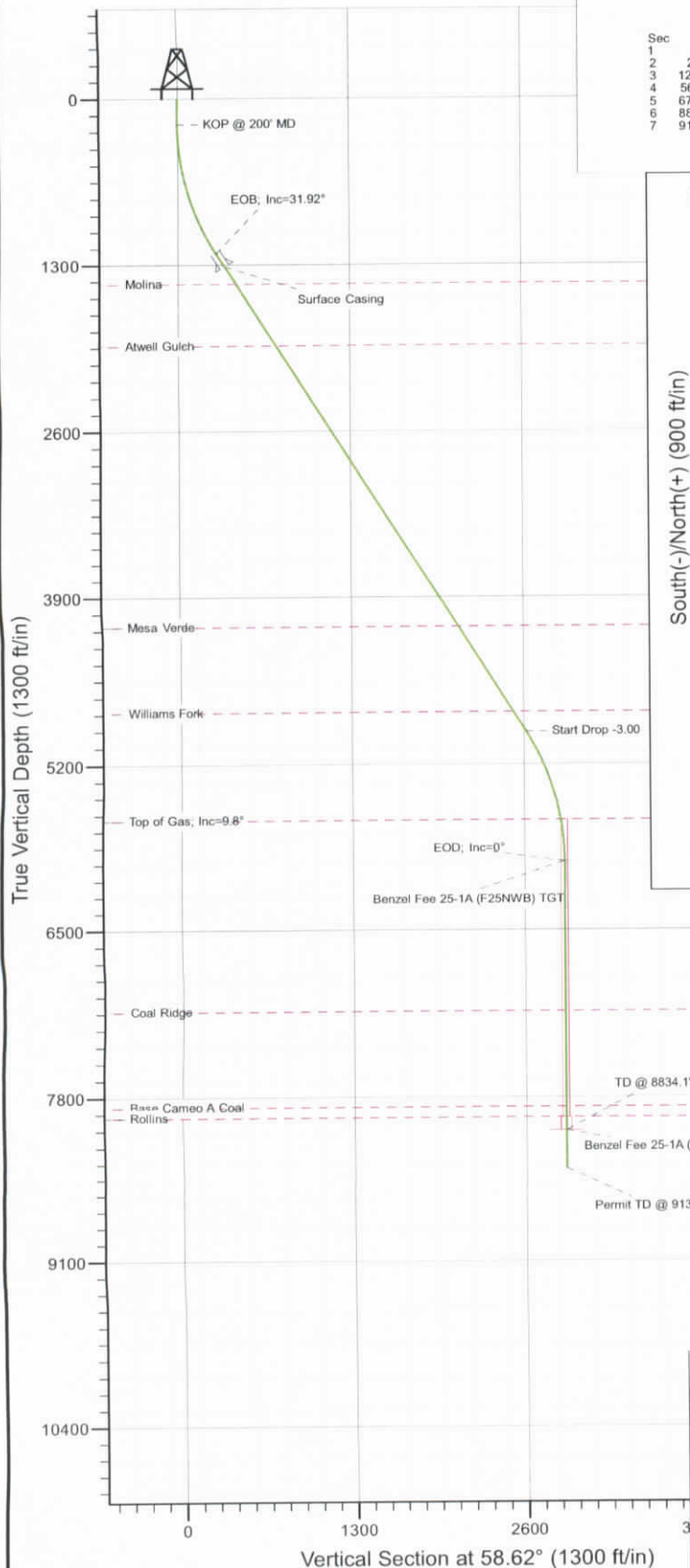
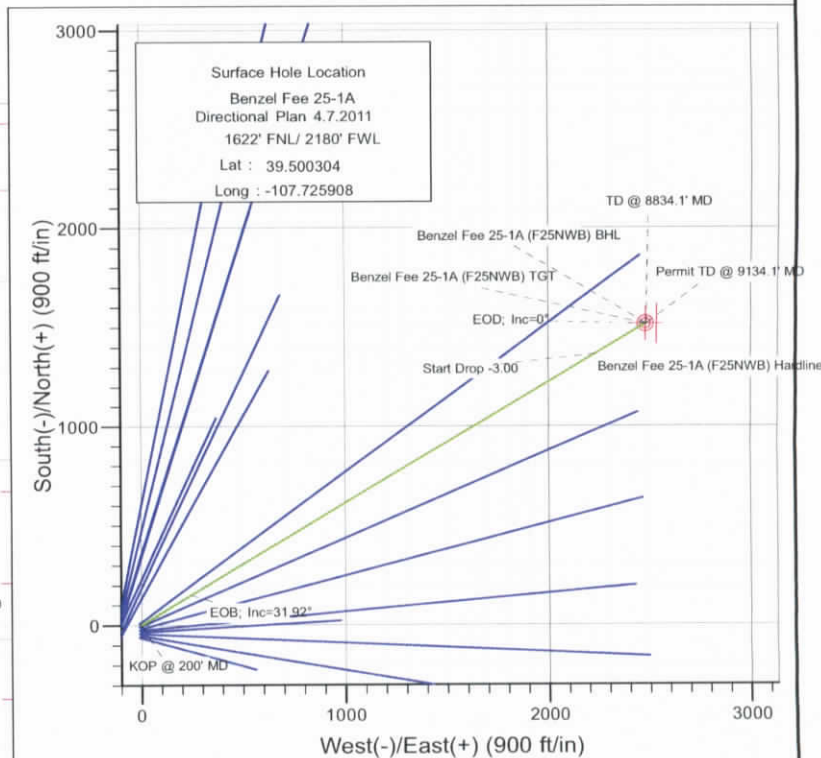




Project: Mamm Creek  
 Site: F25NWB Pad  
 Well: Benzel Fee 25-1A (F25NWB Pad) Directional Plan 4.6.2011  
 Wellbore: DD  
 Design: Plan #1



SECTION DETAILS										
Sec	MD	Inc	Azi	TVD	+N/-S	+E/-W	Dleg	TFace	VSecl	Target
1	0.0	0.00	0.00	0.0	0.0	0.0	0.00	0.00	0.0	
2	200.0	0.00	0.00	200.0	0.0	0.0	0.00	0.00	0.0	
3	1264.1	31.92	58.62	1209.9	150.4	246.6	3.00	58.62	288.9	
4	5669.0	31.92	58.62	4948.6	1363.5	2235.1	0.00	0.00	2618.1	
5	6733.1	0.00	0.00	5958.5	1513.9	2481.7	3.00	180.00	2907.0	Benzel Fee 25-1A (F25NWB) TGT
6	8834.1	0.00	0.00	8059.5	1513.9	2481.7	0.00	0.00	2907.0	Benzel Fee 25-1A (F25NWB) BHL
7	9134.1	0.00	0.00	8359.5	1513.9	2481.7	0.00	0.00	2907.0	



FORMATION TOP DETAILS		
TVDPath	MDPath	Formation
1451.5	1548.8	Molina
1937.5	2121.4	Atwell Gulch
4132.5	4707.5	Mesa Verde
4796.5	5489.8	Williams Fork
5633.5	6406.6	Top of Gas; Inc=9.8"
7136.5	7911.1	Coal Ridge
7877.5	8652.1	Base Cameo A Coal
7959.5	8734.1	Rollins



Azimuths to True North  
 Magnetic North: 10.26°

Magnetic Field  
 Strength: 52308.4snT  
 Dip Angle: 65.80°  
 Date: 4/6/2011  
 Model: IGRF2010

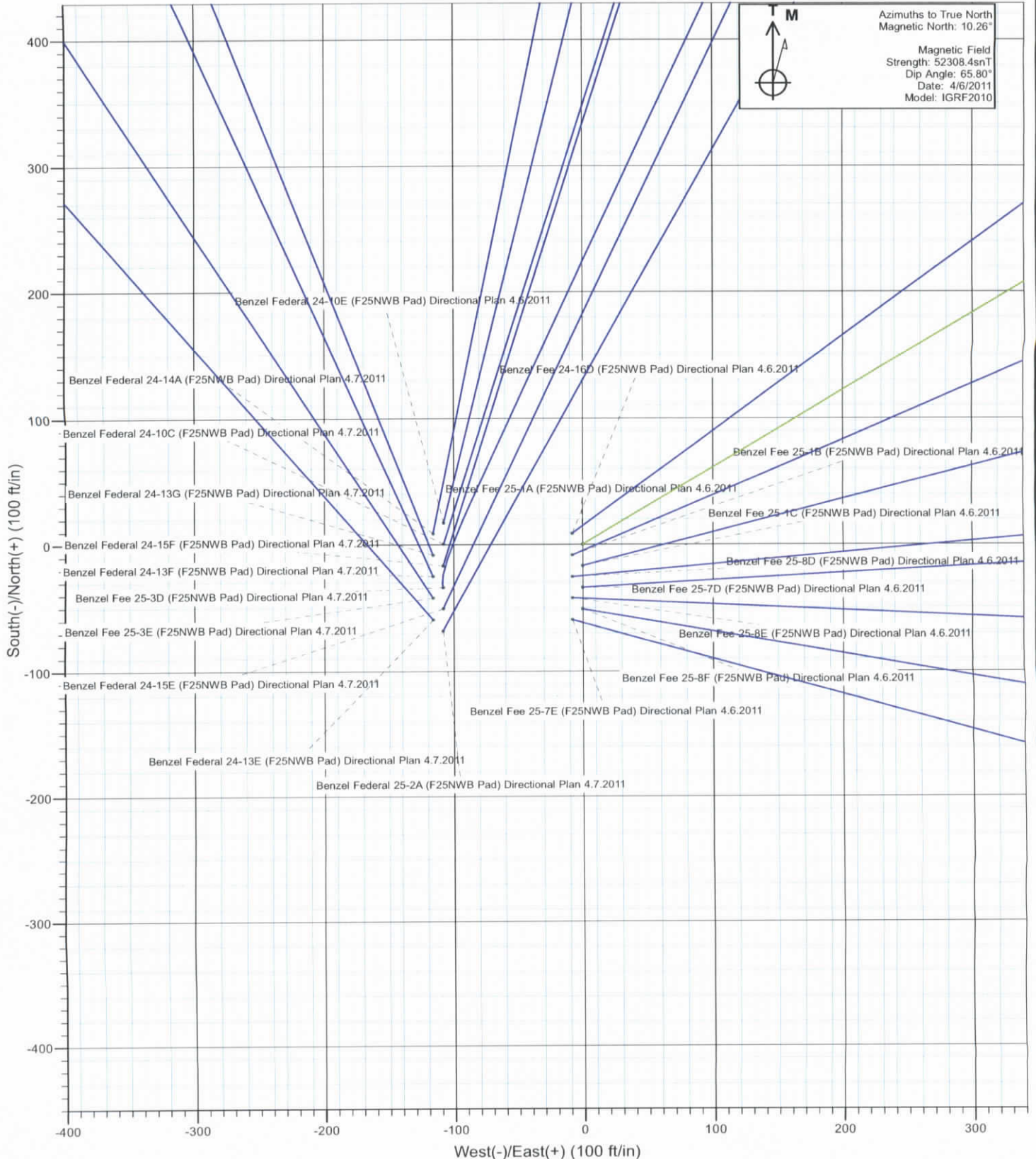
Plan #1  
 Benzel Fee 25-1A (F25NWB Pad) Directional Plan 4.6.2011  
 115XXX; BH

KBE @ 5848.5ft (Original Well Elev)  
 North American Datum 1983  
 Well Benzel Fee 25-1A (F25NWB Pad) Directional Plan 4.6.2011, True North

Type	Target	Azimuth	Origin	Type	N/S	E/W	From	TVD
Target	Benzel Fee 25-1A (F25NWB) BHL	58.62	Slot	0.0	0.0	0.0		
Name		TVD	+N/-S	+E/-W	Latitude	Longitude		
Benzel Fee 25-1A (F25NWB) Hardline		-8059.5	1513.9	2481.7	39.504460	-107.717113		
Benzel Fee 25-1A (F25NWB) TGT		5958.5	1513.9	2481.7	39.504460	-107.717113		
Benzel Fee 25-1A (F25NWB) BHL		8059.5	1513.9	2481.7	39.504460	-107.717113		

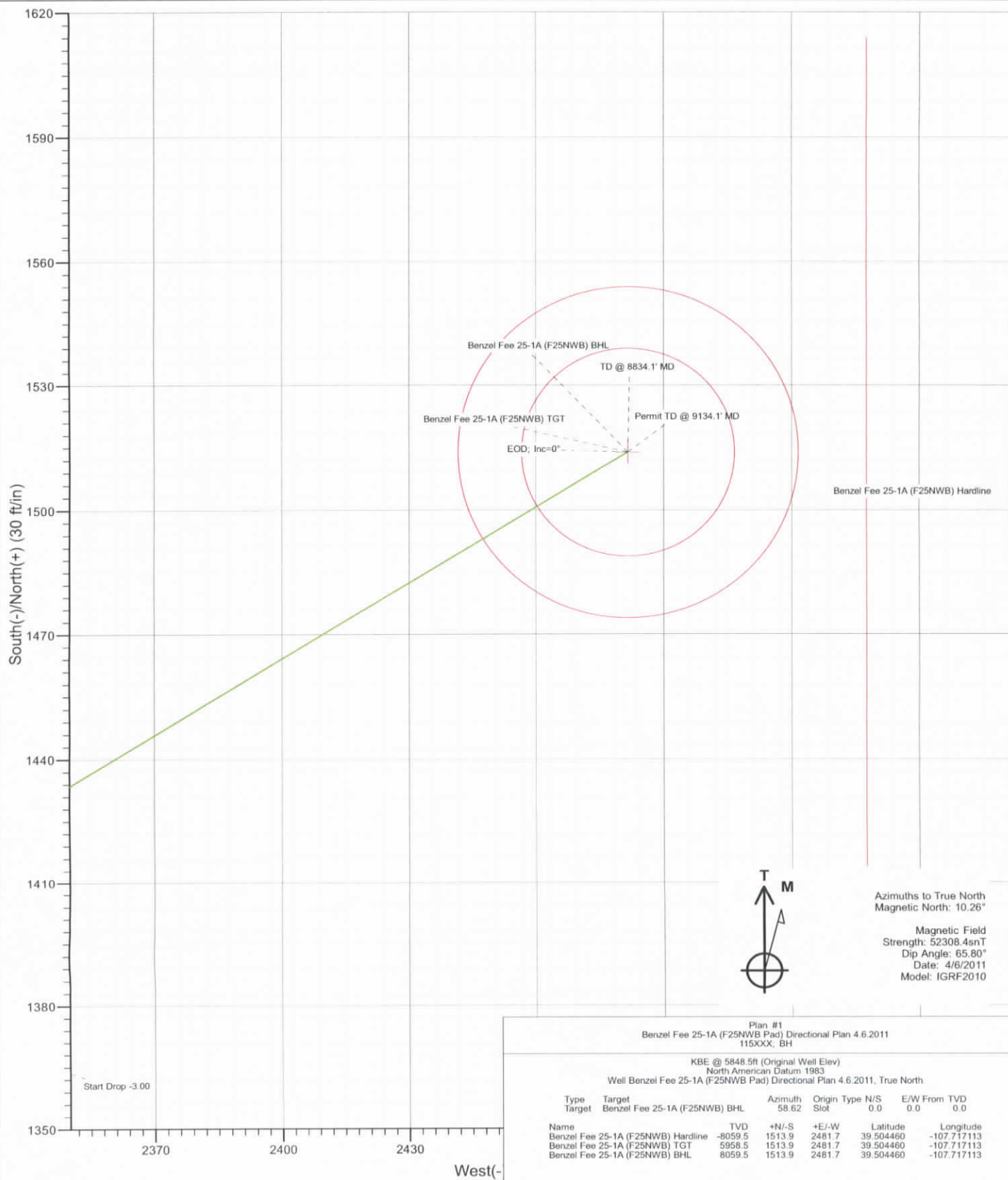


Project: Mamm Creek  
Site: F25NWB Pad  
Well: Benzel Fee 25-1A (F25NWB Pad) Directional Plan 4.6.2011  
Wellbore: DD  
Design: Plan #1





Project: Mamm Creek  
 Site: F25NWB Pad  
 Well: Benzel Fee 25-1A (F25NWB Pad) Directional Plan 4.6.2011  
 Wellbore: DD  
 Design: Plan #1



# Cathedral Energy Services

## Planning Report

<b>Database:</b>	EDM 5000.1 US Multi Users DB	<b>Local Co-ordinate Reference:</b>	Well Benzel Fee 25-1A (F25NWB Pad) Direction
<b>Company:</b>	EnCana Oil & Gas (USA) Inc	<b>TVD Reference:</b>	KBE @ 5848.5ft (Original Well Elev)
<b>Project:</b>	Mamm Creek	<b>MD Reference:</b>	KBE @ 5848.5ft (Original Well Elev)
<b>Site:</b>	F25NWB Pad	<b>North Reference:</b>	True
<b>Well:</b>	Benzel Fee 25-1A (F25NWB Pad) Directional Plan 4.6.	<b>Survey Calculation Method:</b>	Minimum Curvature
<b>Wellbore:</b>	DD		
<b>Design:</b>	Plan #1		

<b>Project</b>	Mamm Creek		
<b>Map System:</b>	US State Plane 1983	<b>System Datum:</b>	Mean Sea Level
<b>Geo Datum:</b>	North American Datum 1983		
<b>Map Zone:</b>	Colorado Central Zone		

<b>Site</b>	F25NWB Pad		
<b>Site Position:</b>		<b>Northing:</b>	1,614,821.30 ft
<b>From:</b>	Lat/Long	<b>Easting:</b>	2,371,946.03 ft
<b>Position Uncertainty:</b>	0.0 ft	<b>Slot Radius:</b>	13.200 in
		<b>Latitude:</b>	39.500328
		<b>Longitude:</b>	-107.725936
		<b>Grid Convergence:</b>	-1.40 °

Well	Benzel Fee 25-1A (F25NWB Pad) Directional Plan 4.6.2011					
Well Position	+N/-S	0.0 ft	Northing:	1,614,812.36 ft	Latitude:	39.500304
	+E/-W	0.0 ft	Easting:	2,371,953.71 ft	Longitude:	-107.725908
Position Uncertainty		0.0 ft	Wellhead Elevation:	ft	Ground Level:	5,826.5 ft

Wellbore	DD				
Magnetics	Model Name	Sample Date	Declination (°)	Dip Angle (°)	Field Strength (nT)
	IGRF2010	4/6/2011	10.26	65.80	52,308

Design	Plan #1			
Audit Notes:				
Version:	Phase:	PLAN	Tie On Depth:	0.0
Vertical Section:	Depth From (TVD) (ft)	+N/-S (ft)	+E/-W (ft)	Direction (°)
	0.0	0.0	0.0	58.62

<b>Plan Sections</b>										
Measured Depth (ft)	Inclination (°)	Azimuth (°)	Vertical Depth (ft)	+N/-S (ft)	+E/-W (ft)	Dogleg Rate (°/100ft)	Build Rate (°/100ft)	Turn Rate (°/100ft)	TFO (°)	Target
0.0	0.00	0.00	0.0	0.0	0.0	0.00	0.00	0.00	0.00	
200.0	0.00	0.00	200.0	0.0	0.0	0.00	0.00	0.00	0.00	
1,264.1	31.92	58.62	1,209.9	150.4	246.6	3.00	3.00	0.00	58.62	
5,669.0	31.92	58.62	4,948.6	1,363.5	2,235.1	0.00	0.00	0.00	0.00	
6,733.1	0.00	0.00	5,958.5	1,513.9	2,481.7	3.00	-3.00	0.00	180.00	Benzel Fee 25-1A (F2
8,834.1	0.00	0.00	8,059.5	1,513.9	2,481.7	0.00	0.00	0.00	0.00	Benzel Fee 25-1A (F2
9,134.1	0.00	0.00	8,359.5	1,513.9	2,481.7	0.00	0.00	0.00	0.00	



# Cathedral Energy Services

## Planning Report

<b>Database:</b>	EDM 5000.1 US Multi Users DB	<b>Local Co-ordinate Reference:</b>	Well Benzel Fee 25-1A (F25NWB Pad) Direction
<b>Company:</b>	EnCana Oil & Gas (USA) Inc	<b>TVD Reference:</b>	KBE @ 5848.5ft (Original Well Elev)
<b>Project:</b>	Mamm Creek	<b>MD Reference:</b>	KBE @ 5848.5ft (Original Well Elev)
<b>Site:</b>	F25NWB Pad	<b>North Reference:</b>	True
<b>Well:</b>	Benzel Fee 25-1A (F25NWB Pad) Directional Plan 4.6.	<b>Survey Calculation Method:</b>	Minimum Curvature
<b>Wellbore:</b>	DD		
<b>Design:</b>	Plan #1		

### Planned Survey

Measured Depth (ft)	Inclination (°)	Azimuth (°)	Vertical Depth (ft)	+N/-S (ft)	+E/-W (ft)	Vertical Section (ft)	Dogleg Rate (°/100ft)	Build Rate (°/100ft)	Comments / Formations
0.0	0.00	0.00	0.0	0.0	0.0	0.0	0.00	0.00	Benzel Fee 25-1A (F25NWB) Hardline
100.0	0.00	0.00	100.0	0.0	0.0	0.0	0.00	0.00	
200.0	0.00	0.00	200.0	0.0	0.0	0.0	0.00	0.00	KOP @ 200' MD
300.0	3.00	58.62	300.0	1.4	2.2	2.6	3.00	3.00	
400.0	6.00	58.62	399.6	5.4	8.9	10.5	3.00	3.00	
500.0	9.00	58.62	498.8	12.2	20.1	23.5	3.00	3.00	
600.0	12.00	58.62	597.1	21.7	35.6	41.7	3.00	3.00	
700.0	15.00	58.62	694.3	33.9	55.6	65.1	3.00	3.00	
800.0	18.00	58.62	790.2	48.7	79.8	93.5	3.00	3.00	
900.0	21.00	58.62	884.4	66.1	108.3	126.9	3.00	3.00	
1,000.0	24.00	58.62	976.8	86.0	141.0	165.1	3.00	3.00	
1,100.0	27.00	58.62	1,067.1	108.4	177.7	208.2	3.00	3.00	
1,200.0	30.00	58.62	1,154.9	133.3	218.4	255.9	3.00	3.00	
1,264.1	31.92	58.62	1,209.9	150.4	246.6	288.9	3.00	3.00	EOB; Inc=31.92°
1,300.0	31.92	58.62	1,240.4	160.3	262.8	307.8	0.00	0.00	
1,385.0	31.92	58.62	1,312.5	183.7	301.2	352.8	0.00	0.00	Surface Casing
1,400.0	31.92	58.62	1,325.2	187.9	307.9	360.7	0.00	0.00	
1,500.0	31.92	58.62	1,410.1	215.4	353.1	413.6	0.00	0.00	
1,548.8	31.92	58.62	1,451.5	228.8	375.1	439.4	0.00	0.00	Molina
1,600.0	31.92	58.62	1,495.0	242.9	398.2	466.5	0.00	0.00	
1,700.0	31.92	58.62	1,579.9	270.5	443.4	519.3	0.00	0.00	
1,800.0	31.92	58.62	1,664.7	298.0	488.5	572.2	0.00	0.00	
1,900.0	31.92	58.62	1,749.6	325.5	533.6	625.1	0.00	0.00	
2,000.0	31.92	58.62	1,834.5	353.1	578.8	678.0	0.00	0.00	
2,100.0	31.92	58.62	1,919.4	380.6	623.9	730.9	0.00	0.00	
2,121.4	31.92	58.62	1,937.5	386.5	633.6	742.2	0.00	0.00	Atwell Gulch
2,200.0	31.92	58.62	2,004.2	408.2	669.1	783.7	0.00	0.00	
2,300.0	31.92	58.62	2,089.1	435.7	714.2	836.6	0.00	0.00	
2,400.0	31.92	58.62	2,174.0	463.2	759.4	889.5	0.00	0.00	
2,500.0	31.92	58.62	2,258.9	490.8	804.5	942.4	0.00	0.00	
2,600.0	31.92	58.62	2,343.7	518.3	849.6	995.3	0.00	0.00	
2,700.0	31.92	58.62	2,428.6	545.9	894.8	1,048.1	0.00	0.00	
2,800.0	31.92	58.62	2,513.5	573.4	939.9	1,101.0	0.00	0.00	
2,900.0	31.92	58.62	2,598.4	600.9	985.1	1,153.9	0.00	0.00	
3,000.0	31.92	58.62	2,683.2	628.5	1,030.2	1,206.8	0.00	0.00	
3,100.0	31.92	58.62	2,768.1	656.0	1,075.4	1,259.7	0.00	0.00	
3,200.0	31.92	58.62	2,853.0	683.5	1,120.5	1,312.5	0.00	0.00	
3,300.0	31.92	58.62	2,937.9	711.1	1,165.6	1,365.4	0.00	0.00	
3,400.0	31.92	58.62	3,022.7	738.6	1,210.8	1,418.3	0.00	0.00	
3,500.0	31.92	58.62	3,107.6	766.2	1,255.9	1,471.2	0.00	0.00	
3,600.0	31.92	58.62	3,192.5	793.7	1,301.1	1,524.0	0.00	0.00	
3,700.0	31.92	58.62	3,277.4	821.2	1,346.2	1,576.9	0.00	0.00	
3,800.0	31.92	58.62	3,362.2	848.8	1,391.3	1,629.8	0.00	0.00	
3,900.0	31.92	58.62	3,447.1	876.3	1,436.5	1,682.7	0.00	0.00	
4,000.0	31.92	58.62	3,532.0	903.9	1,481.6	1,735.6	0.00	0.00	
4,100.0	31.92	58.62	3,616.9	931.4	1,526.8	1,788.4	0.00	0.00	
4,200.0	31.92	58.62	3,701.7	958.9	1,571.9	1,841.3	0.00	0.00	
4,300.0	31.92	58.62	3,786.6	986.5	1,617.1	1,894.2	0.00	0.00	
4,400.0	31.92	58.62	3,871.5	1,014.0	1,662.2	1,947.1	0.00	0.00	
4,500.0	31.92	58.62	3,956.4	1,041.5	1,707.3	2,000.0	0.00	0.00	
4,600.0	31.92	58.62	4,041.2	1,069.1	1,752.5	2,052.8	0.00	0.00	
4,700.0	31.92	58.62	4,126.1	1,096.6	1,797.6	2,105.7	0.00	0.00	

# Cathedral Energy Services

## Planning Report

<b>Database:</b>	EDM 5000.1 US Multi Users DB	<b>Local Co-ordinate Reference:</b>	Well Benzel Fee 25-1A (F25NWB Pad) Direction
<b>Company:</b>	EnCana Oil & Gas (USA) Inc	<b>TVD Reference:</b>	KBE @ 5848.5ft (Original Well Elev)
<b>Project:</b>	Mamm Creek	<b>MD Reference:</b>	KBE @ 5848.5ft (Original Well Elev)
<b>Site:</b>	F25NWB Pad	<b>North Reference:</b>	True
<b>Well:</b>	Benzel Fee 25-1A (F25NWB Pad) Directional Plan 4.6.	<b>Survey Calculation Method:</b>	Minimum Curvature
<b>Wellbore:</b>	DD		
<b>Design:</b>	Plan #1		

### Planned Survey

Measured Depth (ft)	Inclination (°)	Azimuth (°)	Vertical Depth (ft)	+N/-S (ft)	+E/-W (ft)	Vertical Section (ft)	Dogleg Rate (°/100ft)	Build Rate (°/100ft)	Comments / Formations
4,707.5	31.92	58.62	4,132.5	1,098.7	1,801.0	2,109.7	0.00	0.00	Mesa Verde
4,800.0	31.92	58.62	4,211.0	1,124.2	1,842.8	2,158.6	0.00	0.00	
4,900.0	31.92	58.62	4,295.9	1,151.7	1,887.9	2,211.5	0.00	0.00	
5,000.0	31.92	58.62	4,380.7	1,179.2	1,933.1	2,264.4	0.00	0.00	
5,100.0	31.92	58.62	4,465.6	1,206.8	1,978.2	2,317.2	0.00	0.00	
5,200.0	31.92	58.62	4,550.5	1,234.3	2,023.3	2,370.1	0.00	0.00	
5,300.0	31.92	58.62	4,635.4	1,261.9	2,068.5	2,423.0	0.00	0.00	
5,400.0	31.92	58.62	4,720.3	1,289.4	2,113.6	2,475.9	0.00	0.00	
5,489.8	31.92	58.62	4,796.5	1,314.1	2,154.2	2,523.4	0.00	0.00	Williams Fork
5,500.0	31.92	58.62	4,805.1	1,316.9	2,158.8	2,528.7	0.00	0.00	
5,600.0	31.92	58.62	4,890.0	1,344.5	2,203.9	2,581.6	0.00	0.00	
5,669.0	31.92	58.62	4,948.6	1,363.5	2,235.1	2,618.1	0.00	0.00	Start Drop -3.00
5,700.0	30.99	58.62	4,975.0	1,371.9	2,248.9	2,634.3	3.00	-3.00	
5,800.0	27.99	58.62	5,062.0	1,397.5	2,290.9	2,683.5	3.00	-3.00	
5,900.0	24.99	58.62	5,151.5	1,420.8	2,329.0	2,728.1	3.00	-3.00	
6,000.0	21.99	58.62	5,243.2	1,441.5	2,363.0	2,768.0	3.00	-3.00	
6,100.0	18.99	58.62	5,336.9	1,459.8	2,392.9	2,803.0	3.00	-3.00	
6,200.0	15.99	58.62	5,432.2	1,475.4	2,418.5	2,833.1	3.00	-3.00	
6,300.0	12.99	58.62	5,529.1	1,488.4	2,439.9	2,858.1	3.00	-3.00	
6,400.0	9.99	58.62	5,627.0	1,498.8	2,456.9	2,878.0	3.00	-3.00	
6,406.6	9.80	58.62	5,633.5	1,499.4	2,457.9	2,879.1	3.00	-3.00	Top of Gas; Inc=9.8°
6,500.0	6.99	58.62	5,725.9	1,506.5	2,469.5	2,892.8	3.00	-3.00	
6,600.0	3.99	58.62	5,825.5	1,511.5	2,477.7	2,902.3	3.00	-3.00	
6,700.0	0.99	58.62	5,925.4	1,513.8	2,481.4	2,906.7	3.00	-3.00	
6,733.1	0.00	0.00	5,958.5	1,513.9	2,481.7	2,907.0	3.00	-3.00	EOD; Inc=0° - Benzel Fee 25-1A (F25NWB) TC
6,800.0	0.00	0.00	6,025.4	1,513.9	2,481.7	2,907.0	0.00	0.00	
6,900.0	0.00	0.00	6,125.4	1,513.9	2,481.7	2,907.0	0.00	0.00	
7,000.0	0.00	0.00	6,225.4	1,513.9	2,481.7	2,907.0	0.00	0.00	
7,100.0	0.00	0.00	6,325.4	1,513.9	2,481.7	2,907.0	0.00	0.00	
7,200.0	0.00	0.00	6,425.4	1,513.9	2,481.7	2,907.0	0.00	0.00	
7,300.0	0.00	0.00	6,525.4	1,513.9	2,481.7	2,907.0	0.00	0.00	
7,400.0	0.00	0.00	6,625.4	1,513.9	2,481.7	2,907.0	0.00	0.00	
7,500.0	0.00	0.00	6,725.4	1,513.9	2,481.7	2,907.0	0.00	0.00	
7,600.0	0.00	0.00	6,825.4	1,513.9	2,481.7	2,907.0	0.00	0.00	
7,700.0	0.00	0.00	6,925.4	1,513.9	2,481.7	2,907.0	0.00	0.00	
7,800.0	0.00	0.00	7,025.4	1,513.9	2,481.7	2,907.0	0.00	0.00	
7,900.0	0.00	0.00	7,125.4	1,513.9	2,481.7	2,907.0	0.00	0.00	
7,911.1	0.00	0.00	7,136.5	1,513.9	2,481.7	2,907.0	0.00	0.00	Coal Ridge
8,000.0	0.00	0.00	7,225.4	1,513.9	2,481.7	2,907.0	0.00	0.00	
8,100.0	0.00	0.00	7,325.4	1,513.9	2,481.7	2,907.0	0.00	0.00	
8,200.0	0.00	0.00	7,425.4	1,513.9	2,481.7	2,907.0	0.00	0.00	
8,300.0	0.00	0.00	7,525.4	1,513.9	2,481.7	2,907.0	0.00	0.00	
8,400.0	0.00	0.00	7,625.4	1,513.9	2,481.7	2,907.0	0.00	0.00	
8,500.0	0.00	0.00	7,725.4	1,513.9	2,481.7	2,907.0	0.00	0.00	
8,600.0	0.00	0.00	7,825.4	1,513.9	2,481.7	2,907.0	0.00	0.00	
8,652.1	0.00	0.00	7,877.5	1,513.9	2,481.7	2,907.0	0.00	0.00	Base Cameo A Coal
8,700.0	0.00	0.00	7,925.4	1,513.9	2,481.7	2,907.0	0.00	0.00	
8,734.1	0.00	0.00	7,959.5	1,513.9	2,481.7	2,907.0	0.00	0.00	Rollins
8,800.0	0.00	0.00	8,025.4	1,513.9	2,481.7	2,907.0	0.00	0.00	
8,834.1	0.00	0.00	8,059.5	1,513.9	2,481.7	2,907.0	0.00	0.00	TD @ 8834.1' MD - Benzel Fee 25-1A (F25NWB)
8,900.0	0.00	0.00	8,125.4	1,513.9	2,481.7	2,907.0	0.00	0.00	
9,000.0	0.00	0.00	8,225.4	1,513.9	2,481.7	2,907.0	0.00	0.00	

# Cathedral Energy Services

## Planning Report

<b>Database:</b>	EDM 5000.1 US Multi Users DB	<b>Local Co-ordinate Reference:</b>	Well Benzel Fee 25-1A (F25NWB Pad) Direction
<b>Company:</b>	EnCana Oil & Gas (USA) Inc	<b>TVD Reference:</b>	KBE @ 5848.5ft (Original Well Elev)
<b>Project:</b>	Mamm Creek	<b>MD Reference:</b>	KBE @ 5848.5ft (Original Well Elev)
<b>Site:</b>	F25NWB Pad	<b>North Reference:</b>	True
<b>Well:</b>	Benzel Fee 25-1A (F25NWB Pad) Directional Plan 4.6.	<b>Survey Calculation Method:</b>	Minimum Curvature
<b>Wellbore:</b>	DD		
<b>Design:</b>	Plan #1		

### Planned Survey

Measured Depth (ft)	Inclination (°)	Azimuth (°)	Vertical Depth (ft)	+N/-S (ft)	+E/-W (ft)	Vertical Section (ft)	Dogleg Rate (°/100ft)	Build Rate (°/100ft)	Comments / Formations
9,100.0	0.00	0.00	8,325.4	1,513.9	2,481.7	2,907.0	0.00	0.00	
9,134.1	0.00	0.00	8,359.5	1,513.9	2,481.7	2,907.0	0.00	0.00	Permit TD @ 9134.1' MD

### Targets

Target Name - hit/miss target - Shape	Dip Angle (°)	Dip Dir. (°)	TVD (ft)	+N/-S (ft)	+E/-W (ft)	Northing (ft)	Easting (ft)	Latitude	Longitude
Benzel Fee 25-1A (F25NWB Pad) - plan hits target center - Circle (radius 40.0)	0.00	0.00	8,059.5	1,513.9	2,481.7	1,616,265.02	2,374,471.72	39.504460	-107.717113
Benzel Fee 25-1A (F25NWB Pad) - plan hits target center - Circle (radius 25.0)	0.00	0.00	5,958.5	1,513.9	2,481.7	1,616,265.02	2,374,471.72	39.504460	-107.717113
Benzel Fee 25-1A (F25NWB Pad) - plan misses target center by 8567.7ft at 0.0ft MD (0.0 TVD, 0.0 N, 0.0 E) - Polygon	0.00	0.00	-8,059.5	1,513.9	2,481.7	1,616,265.02	2,374,471.72	39.504460	-107.717113
Point 1			-8,059.5	100.0	56.0	1,616,363.62	2,374,530.15		
Point 2			-8,059.5	-100.0	56.0	1,616,163.68	2,374,525.25		

### Casing Points

Measured Depth (ft)	Vertical Depth (ft)	Name	Casing Diameter (in)	Hole Diameter (in)
1,385.0	1,312.5	Surface Casing	0.000	0.000

### Formations

Measured Depth (ft)	Vertical Depth (ft)	Name	Lithology	Dip (°)	Dip Direction (°)
1,548.8	1,451.5	Molina		0.00	
2,121.4	1,937.5	Atwell Gulch		0.00	
4,707.5	4,132.5	Mesa Verde		0.00	
5,489.8	4,796.5	Williams Fork		0.00	
6,406.6	5,633.5	Top of Gas; Inc=9.8°		0.00	
7,911.1	7,136.5	Coal Ridge		0.00	
8,652.1	7,877.5	Base Cameo A Coal		0.00	
8,734.1	7,959.5	Rollins		0.00	



# Cathedral Energy Services

## Planning Report

<b>Database:</b>	EDM 5000.1 US Multi Users DB	<b>Local Co-ordinate Reference:</b>	Well Benzel Fee 25-1A (F25NWB Pad) Direction
<b>Company:</b>	EnCana Oil & Gas (USA) Inc	<b>TVD Reference:</b>	KBE @ 5848.5ft (Original Well Elev)
<b>Project:</b>	Mamm Creek	<b>MD Reference:</b>	KBE @ 5848.5ft (Original Well Elev)
<b>Site:</b>	F25NWB Pad	<b>North Reference:</b>	True
<b>Well:</b>	Benzel Fee 25-1A (F25NWB Pad) Directional Plan 4.6.	<b>Survey Calculation Method:</b>	Minimum Curvature
<b>Wellbore:</b>	DD		
<b>Design:</b>	Plan #1		

Plan Annotations				
Measured Depth (ft)	Vertical Depth (ft)	Local Coordinates		Comment
		+N/-S (ft)	+E/-W (ft)	
200.0	200.0	0.0	0.0	KOP @ 200' MD
1,264.1	1,209.9	150.4	246.6	EOB; Inc=31.92°
5,669.0	4,948.6	1,363.5	2,235.1	Start Drop -3.00
6,733.1	5,958.5	1,513.9	2,481.7	EOD; Inc=0°
8,834.1	8,059.5	1,513.9	2,481.7	TD @ 8834.1' MD
9,134.1	8,359.5	1,513.9	2,481.7	Permit TD @ 9134.1' MD