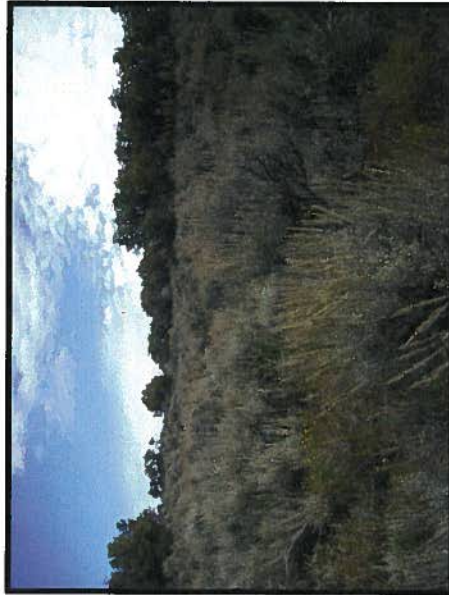


NW CORNER OF PAD LOOKING SOUTHEASTERLY
SEPTEMBER 22, 2009



NE CORNER OF PAD LOOKING SOUTHWESTERLY
SEPTEMBER 22, 2009



W CORNER OF PAD LOOKING NORTHEASTERLY
SEPTEMBER 22, 2009



SE CORNER OF PAD LOOKING NORTHWESTERLY
SEPTEMBER 22, 2009

MARATHON OIL COMPANY
PICEANCE BASIN COLORADO

REFERENCE AREA 2
PHOTOS FOR 596-29A
GARFIELD COUNTY, COLORADO



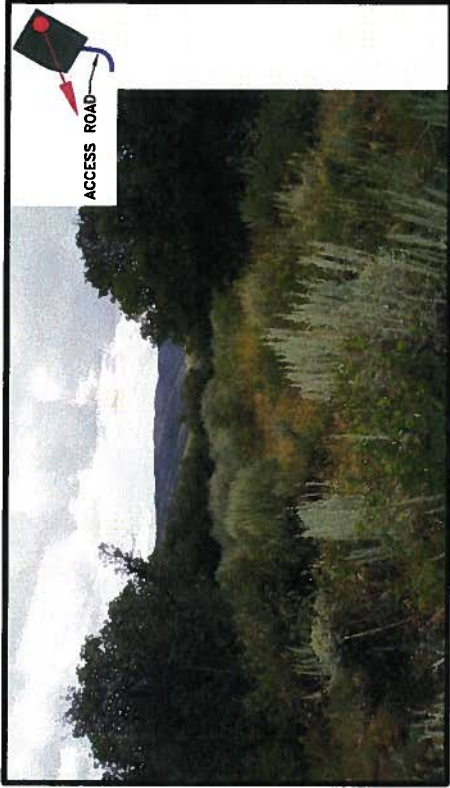
C-K
ASSOCIATES, LLC
BATON ROUGE, LOUISIANA

Drawn:	eeb/AV9.3
Checked:	KEN
Approved:	KEN
Date:	2/2/10
Dwg. No.:	A4332E-96

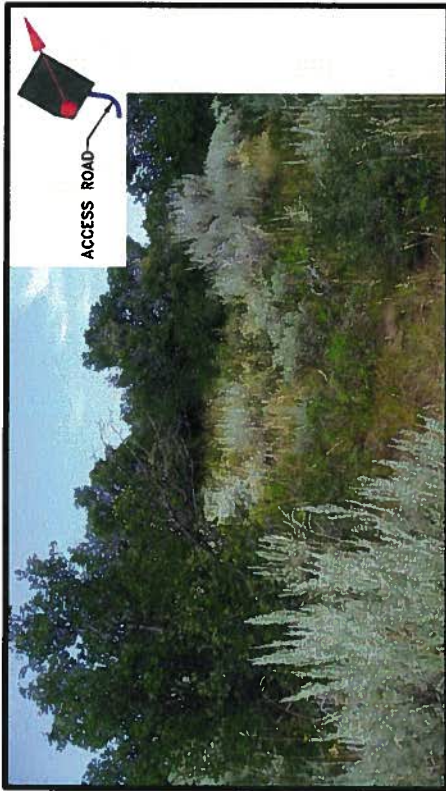
FIGURE 4 OF 6



N CORNER OF PAD LOOKING SOUTHERLY
AUGUST 28, 2007



E CORNER OF PAD LOOKING WESTERLY
AUGUST 28, 2007



W CORNER OF PAD LOOKING NORTHERLY
AUGUST 28, 2007



S CORNER OF PAD LOOKING NORTHERLY
AUGUST 28, 2007

MARATHON OIL COMPANY
PICEANCE BASIN COLORADO

**WELL PAD PHOTOS
FOR 596-29A**

GARFIELD COUNTY, COLORADO



Drawn: eeb/AV9.3
Checked: KEN
Approved: KEN
Date: 2/2/10
Dwg. No.: A4332E-94

FIGURE 2 OF 6