

Denver Division- Colorado

DJ - Hereford Ranch

Eat Platte 01-01H

East Platte 01-01H

Original Wellbore

Plan: APD Directional Plan

Standard Planning Report

03 May, 2011

EOG Resources Inc

Planning Report

Database:	EDM	Local Co-ordinate Reference:	Site Eat Platte 01-01H
Company:	Denver Division- Colorado	TVD Reference:	RIG @ 4482.00ft (TBD)
Project:	DJ - Hereford Ranch	MD Reference:	RIG @ 4482.00ft (TBD)
Site:	Eat Platte 01-01H	North Reference:	True
Well:	East Platte 01-01H	Survey Calculation Method:	Minimum Curvature
Wellbore:	Original Wellbore		
Design:	APD Directional Plan		

Project	DJ - Hereford Ranch, Weld County		
Map System:	US State Plane 1927 (Exact solution)	System Datum:	Mean Sea Level
Geo Datum:	NAD 1927 (NADCON CONUS)		
Map Zone:	Colorado North 501		

Site	Eat Platte 01-01H		
Site Position:		Northing:	372,887.27 ft
From:	Lat/Long	Easting:	2,371,177.52 ft
Position Uncertainty:	0.00 ft	Slot Radius:	"
		Latitude:	40° 20' 57.638 N
		Longitude:	104° 10' 5.722 W
		Grid Convergence:	0.86 deg

Well	East Platte 01-01H		
Well Position	+N/-S	0.00 ft	Northing: 372,887.27 ft
	+E/-W	0.00 ft	Easting: 2,371,177.52 ft
Position Uncertainty	0.00 ft	Wellhead Elevation:	ft
		Latitude:	40° 20' 57.638 N
		Longitude:	104° 10' 5.722 W
		Ground Level:	4,460.00 ft

Wellbore	Original Wellbore				
Magnetics	Model Name	Sample Date	Declination (deg)	Dip Angle (deg)	Field Strength (nT)
	IGRF200510	5/3/2011	8.51	67.12	53,204

Design	APD Directional Plan			
Audit Notes:				
Version:	Phase:	PROTOTYPE	Tie On Depth:	0.00
Vertical Section:	Depth From (TVD) (ft)	+N/-S (ft)	+E/-W (ft)	Direction (deg)
	0.00	0.00	0.00	152.55

Plan Sections										
Measured Depth (ft)	Inclination (deg)	Azimuth (deg)	Vertical Depth (ft)	+N/-S (ft)	+E/-W (ft)	Dogleg Rate (?/100ft)	Build Rate (?/100ft)	Turn Rate (?/100ft)	TFO (deg)	Target
0.00	0.00	0.00	0.00	0.00	0.00	0.00	0.00	0.00	0.00	
1,000.00	0.00	0.00	1,000.00	0.00	0.00	0.00	0.00	0.00	0.00	
1,064.55	0.65	125.14	1,064.55	-0.21	0.30	1.00	1.00	0.00	125.14	
5,343.19	0.65	125.14	5,342.91	-27.95	39.71	0.00	0.00	0.00	0.00	
6,087.81	90.00	125.14	5,815.00	-302.75	430.14	12.00	12.00	0.00	0.00	East Platte 01-01H
7,495.07	90.00	160.32	5,815.00	-1,405.14	1,268.99	2.50	0.00	2.50	90.00	East Platte 01-01H
11,030.95	90.00	160.32	5,815.00	-4,734.52	2,459.67	0.00	0.00	0.00	0.00	East Platte 01-01H

EOG Resources Inc

Planning Report

Database:	EDM	Local Co-ordinate Reference:	Site Eat Platte 01-01H
Company:	Denver Division- Colorado	TVD Reference:	RIG @ 4482.00ft (TBD)
Project:	DJ - Hereford Ranch	MD Reference:	RIG @ 4482.00ft (TBD)
Site:	Eat Platte 01-01H	North Reference:	True
Well:	East Platte 01-01H	Survey Calculation Method:	Minimum Curvature
Wellbore:	Original Wellbore		
Design:	APD Directional Plan		

Planned Survey

Measured Depth (ft)	Inclination (deg)	Azimuth (deg)	Vertical Depth (ft)	+N/-S (ft)	+E/-W (ft)	Vertical Section (ft)	Dogleg Rate (?/100ft)	Build Rate (?/100ft)	Turn Rate (?/100ft)
0.00	0.00	0.00	0.00	0.00	0.00	0.00	0.00	0.00	0.00
100.00	0.00	0.00	100.00	0.00	0.00	0.00	0.00	0.00	0.00
200.00	0.00	0.00	200.00	0.00	0.00	0.00	0.00	0.00	0.00
300.00	0.00	0.00	300.00	0.00	0.00	0.00	0.00	0.00	0.00
400.00	0.00	0.00	400.00	0.00	0.00	0.00	0.00	0.00	0.00
500.00	0.00	0.00	500.00	0.00	0.00	0.00	0.00	0.00	0.00
600.00	0.00	0.00	600.00	0.00	0.00	0.00	0.00	0.00	0.00
700.00	0.00	0.00	700.00	0.00	0.00	0.00	0.00	0.00	0.00
800.00	0.00	0.00	800.00	0.00	0.00	0.00	0.00	0.00	0.00
9-5/8"									
900.00	0.00	0.00	900.00	0.00	0.00	0.00	0.00	0.00	0.00
1,000.00	0.00	0.00	1,000.00	0.00	0.00	0.00	0.00	0.00	0.00
1,064.55	0.65	125.14	1,064.55	-0.21	0.30	0.32	1.00	1.00	0.00
1,100.00	0.65	125.14	1,100.00	-0.44	0.62	0.68	0.00	0.00	0.00
1,200.00	0.65	125.14	1,199.99	-1.09	1.55	1.68	0.00	0.00	0.00
1,300.00	0.65	125.14	1,299.98	-1.74	2.47	2.68	0.00	0.00	0.00
1,400.00	0.65	125.14	1,399.98	-2.38	3.39	3.68	0.00	0.00	0.00
1,500.00	0.65	125.14	1,499.97	-3.03	4.31	4.68	0.00	0.00	0.00
1,600.00	0.65	125.14	1,599.96	-3.68	5.23	5.68	0.00	0.00	0.00
1,700.00	0.65	125.14	1,699.96	-4.33	6.15	6.68	0.00	0.00	0.00
1,800.00	0.65	125.14	1,799.95	-4.98	7.07	7.68	0.00	0.00	0.00
1,900.00	0.65	125.14	1,899.95	-5.63	7.99	8.68	0.00	0.00	0.00
2,000.00	0.65	125.14	1,999.94	-6.27	8.92	9.68	0.00	0.00	0.00
2,100.00	0.65	125.14	2,099.93	-6.92	9.84	10.68	0.00	0.00	0.00
2,200.00	0.65	125.14	2,199.93	-7.57	10.76	11.68	0.00	0.00	0.00
2,300.00	0.65	125.14	2,299.92	-8.22	11.68	12.68	0.00	0.00	0.00
2,400.00	0.65	125.14	2,399.91	-8.87	12.60	13.68	0.00	0.00	0.00
2,500.00	0.65	125.14	2,499.91	-9.52	13.52	14.68	0.00	0.00	0.00
2,600.00	0.65	125.14	2,599.90	-10.17	14.44	15.68	0.00	0.00	0.00
2,700.00	0.65	125.14	2,699.89	-10.81	15.36	16.68	0.00	0.00	0.00
2,800.00	0.65	125.14	2,799.89	-11.46	16.28	17.68	0.00	0.00	0.00
2,900.00	0.65	125.14	2,899.88	-12.11	17.21	18.68	0.00	0.00	0.00
3,000.00	0.65	125.14	2,999.88	-12.76	18.13	19.68	0.00	0.00	0.00
3,100.00	0.65	125.14	3,099.87	-13.41	19.05	20.68	0.00	0.00	0.00
3,200.00	0.65	125.14	3,199.86	-14.06	19.97	21.68	0.00	0.00	0.00
3,300.00	0.65	125.14	3,299.86	-14.70	20.89	22.68	0.00	0.00	0.00
3,400.00	0.65	125.14	3,399.85	-15.35	21.81	23.68	0.00	0.00	0.00
3,500.00	0.65	125.14	3,499.84	-16.00	22.73	24.68	0.00	0.00	0.00
3,600.00	0.65	125.14	3,599.84	-16.65	23.65	25.68	0.00	0.00	0.00
3,700.00	0.65	125.14	3,699.83	-17.30	24.58	26.68	0.00	0.00	0.00
3,800.00	0.65	125.14	3,799.83	-17.95	25.50	27.68	0.00	0.00	0.00
3,900.00	0.65	125.14	3,899.82	-18.59	26.42	28.68	0.00	0.00	0.00
4,000.00	0.65	125.14	3,999.81	-19.24	27.34	29.68	0.00	0.00	0.00
4,100.00	0.65	125.14	4,099.81	-19.89	28.26	30.68	0.00	0.00	0.00
4,200.00	0.65	125.14	4,199.80	-20.54	29.18	31.68	0.00	0.00	0.00
4,300.00	0.65	125.14	4,299.79	-21.19	30.10	32.68	0.00	0.00	0.00
4,400.00	0.65	125.14	4,399.79	-21.84	31.02	33.68	0.00	0.00	0.00
4,500.00	0.65	125.14	4,499.78	-22.49	31.95	34.68	0.00	0.00	0.00
4,600.00	0.65	125.14	4,599.77	-23.13	32.87	35.68	0.00	0.00	0.00
4,700.00	0.65	125.14	4,699.77	-23.78	33.79	36.68	0.00	0.00	0.00
4,800.00	0.65	125.14	4,799.76	-24.43	34.71	37.68	0.00	0.00	0.00
4,900.00	0.65	125.14	4,899.76	-25.08	35.63	38.68	0.00	0.00	0.00
5,000.00	0.65	125.14	4,999.75	-25.73	36.55	39.68	0.00	0.00	0.00

EOG Resources Inc

Planning Report

Database:	EDM	Local Co-ordinate Reference:	Site Eat Platte 01-01H
Company:	Denver Division- Colorado	TVD Reference:	RIG @ 4482.00ft (TBD)
Project:	DJ - Hereford Ranch	MD Reference:	RIG @ 4482.00ft (TBD)
Site:	Eat Platte 01-01H	North Reference:	True
Well:	East Platte 01-01H	Survey Calculation Method:	Minimum Curvature
Wellbore:	Original Wellbore		
Design:	APD Directional Plan		

Planned Survey

Measured Depth (ft)	Inclination (deg)	Azimuth (deg)	Vertical Depth (ft)	+N/-S (ft)	+E/-W (ft)	Vertical Section (ft)	Dogleg Rate (?/100ft)	Build Rate (?/100ft)	Turn Rate (?/100ft)
5,100.00	0.65	125.14	5,099.74	-26.38	37.47	40.68	0.00	0.00	0.00
5,200.00	0.65	125.14	5,199.74	-27.02	38.39	41.68	0.00	0.00	0.00
5,300.00	0.65	125.14	5,299.73	-27.67	39.32	42.68	0.00	0.00	0.00
5,343.19	0.65	125.14	5,342.91	-27.95	39.71	43.11	0.00	0.00	0.00
5,400.00	7.46	125.14	5,399.55	-30.26	43.00	46.68	12.00	12.00	0.00
5,500.00	19.46	125.14	5,496.63	-43.64	62.00	67.31	12.00	12.00	0.00
5,600.00	31.46	125.14	5,586.75	-68.34	97.09	105.41	12.00	12.00	0.00
5,700.00	43.46	125.14	5,665.98	-103.29	146.74	159.31	12.00	12.00	0.00
5,800.00	55.46	125.14	5,730.85	-146.95	208.78	226.65	12.00	12.00	0.00
5,900.00	67.46	125.14	5,778.54	-197.42	280.49	304.50	12.00	12.00	0.00
6,000.00	79.46	125.14	5,806.95	-252.50	358.73	389.45	12.00	12.00	0.00
6,087.81	90.00	125.14	5,815.00	-302.75	430.14	466.96	12.00	12.00	0.00
7" - East Platte 01-01H (ICP)									
6,100.00	90.00	125.44	5,815.00	-309.80	440.09	477.80	2.50	0.00	2.50
6,200.00	90.00	127.94	5,815.00	-369.55	520.26	567.78	2.50	0.00	2.50
6,300.00	90.00	130.44	5,815.00	-432.74	597.76	659.58	2.50	0.00	2.50
6,400.00	90.00	132.94	5,815.00	-499.25	672.42	753.03	2.50	0.00	2.50
6,500.00	90.00	135.44	5,815.00	-568.95	744.11	847.93	2.50	0.00	2.50
6,600.00	90.00	137.94	5,815.00	-641.72	812.70	944.12	2.50	0.00	2.50
6,700.00	90.00	140.44	5,815.00	-717.41	878.04	1,041.41	2.50	0.00	2.50
6,800.00	90.00	142.94	5,815.00	-795.87	940.02	1,139.62	2.50	0.00	2.50
6,900.00	90.00	145.44	5,815.00	-876.97	998.52	1,238.55	2.50	0.00	2.50
7,000.00	90.00	147.94	5,815.00	-960.54	1,053.42	1,338.02	2.50	0.00	2.50
7,100.00	90.00	150.44	5,815.00	-1,046.42	1,104.63	1,437.84	2.50	0.00	2.50
7,200.00	90.00	152.94	5,815.00	-1,134.46	1,152.05	1,537.82	2.50	0.00	2.50
7,300.00	90.00	155.44	5,815.00	-1,224.48	1,195.57	1,637.77	2.50	0.00	2.50
7,400.00	90.00	157.94	5,815.00	-1,316.31	1,235.13	1,737.50	2.50	0.00	2.50
7,495.07	90.00	160.32	5,815.00	-1,405.14	1,268.99	1,831.94	2.50	0.00	2.50
7,500.00	90.00	160.32	5,815.00	-1,409.78	1,270.65	1,836.82	0.00	0.00	0.00
7,600.00	90.00	160.32	5,815.00	-1,503.94	1,304.33	1,935.90	0.00	0.00	0.00
7,700.00	90.00	160.32	5,815.00	-1,598.10	1,338.00	2,034.98	0.00	0.00	0.00
7,800.00	90.00	160.32	5,815.00	-1,692.26	1,371.68	2,134.06	0.00	0.00	0.00
7,900.00	90.00	160.32	5,815.00	-1,786.42	1,405.35	2,233.14	0.00	0.00	0.00
8,000.00	90.00	160.32	5,815.00	-1,880.58	1,439.03	2,332.23	0.00	0.00	0.00
8,100.00	90.00	160.32	5,815.00	-1,974.74	1,472.70	2,431.31	0.00	0.00	0.00
8,200.00	90.00	160.32	5,815.00	-2,068.90	1,506.37	2,530.39	0.00	0.00	0.00
8,300.00	90.00	160.32	5,815.00	-2,163.06	1,540.05	2,629.47	0.00	0.00	0.00
8,400.00	90.00	160.32	5,815.00	-2,257.22	1,573.72	2,728.55	0.00	0.00	0.00
8,500.00	90.00	160.32	5,815.00	-2,351.38	1,607.40	2,827.63	0.00	0.00	0.00
8,600.00	90.00	160.32	5,815.00	-2,445.54	1,641.07	2,926.71	0.00	0.00	0.00
8,700.00	90.00	160.32	5,815.00	-2,539.70	1,674.74	3,025.79	0.00	0.00	0.00
8,800.00	90.00	160.32	5,815.00	-2,633.86	1,708.42	3,124.87	0.00	0.00	0.00
8,900.00	90.00	160.32	5,815.00	-2,728.02	1,742.09	3,223.95	0.00	0.00	0.00
9,000.00	90.00	160.32	5,815.00	-2,822.18	1,775.77	3,323.03	0.00	0.00	0.00
9,100.00	90.00	160.32	5,815.00	-2,916.34	1,809.44	3,422.11	0.00	0.00	0.00
9,200.00	90.00	160.32	5,815.00	-3,010.50	1,843.12	3,521.20	0.00	0.00	0.00
9,300.00	90.00	160.32	5,815.00	-3,104.66	1,876.79	3,620.28	0.00	0.00	0.00
9,400.00	90.00	160.32	5,815.00	-3,198.82	1,910.46	3,719.36	0.00	0.00	0.00
9,500.00	90.00	160.32	5,815.00	-3,292.98	1,944.14	3,818.44	0.00	0.00	0.00
9,600.00	90.00	160.32	5,815.00	-3,387.13	1,977.81	3,917.52	0.00	0.00	0.00
9,700.00	90.00	160.32	5,815.00	-3,481.29	2,011.49	4,016.60	0.00	0.00	0.00
9,800.00	90.00	160.32	5,815.00	-3,575.45	2,045.16	4,115.68	0.00	0.00	0.00
9,900.00	90.00	160.32	5,815.00	-3,669.61	2,078.83	4,214.76	0.00	0.00	0.00

EOG Resources Inc

Planning Report

Database:	EDM	Local Co-ordinate Reference:	Site Eat Platte 01-01H
Company:	Denver Division- Colorado	TVD Reference:	RIG @ 4482.00ft (TBD)
Project:	DJ - Hereford Ranch	MD Reference:	RIG @ 4482.00ft (TBD)
Site:	Eat Platte 01-01H	North Reference:	True
Well:	East Platte 01-01H	Survey Calculation Method:	Minimum Curvature
Wellbore:	Original Wellbore		
Design:	APD Directional Plan		

Planned Survey									
Measured Depth (ft)	Inclination (deg)	Azimuth (deg)	Vertical Depth (ft)	+N/-S (ft)	+E/-W (ft)	Vertical Section (ft)	Dogleg Rate (?/100ft)	Build Rate (?/100ft)	Turn Rate (?/100ft)
10,000.00	90.00	160.32	5,815.00	-3,763.77	2,112.51	4,313.84	0.00	0.00	0.00
10,100.00	90.00	160.32	5,815.00	-3,857.93	2,146.18	4,412.92	0.00	0.00	0.00
10,200.00	90.00	160.32	5,815.00	-3,952.09	2,179.86	4,512.00	0.00	0.00	0.00
10,300.00	90.00	160.32	5,815.00	-4,046.25	2,213.53	4,611.09	0.00	0.00	0.00
10,400.00	90.00	160.32	5,815.00	-4,140.41	2,247.21	4,710.17	0.00	0.00	0.00
10,500.00	90.00	160.32	5,815.00	-4,234.57	2,280.88	4,809.25	0.00	0.00	0.00
10,600.00	90.00	160.32	5,815.00	-4,328.73	2,314.55	4,908.33	0.00	0.00	0.00
10,700.00	90.00	160.32	5,815.00	-4,422.89	2,348.23	5,007.41	0.00	0.00	0.00
10,800.00	90.00	160.32	5,815.00	-4,517.05	2,381.90	5,106.49	0.00	0.00	0.00
10,900.00	90.00	160.32	5,815.00	-4,611.21	2,415.58	5,205.57	0.00	0.00	0.00
11,000.00	90.00	160.32	5,815.00	-4,705.37	2,449.25	5,304.65	0.00	0.00	0.00
11,030.95	90.00	160.32	5,815.00	-4,734.51	2,459.67	5,335.32	0.00	0.00	0.00
4 1/2" - East Platte 01-01H (BHL)									

Targets									
Target Name	- hit/miss target	Dip Angle (deg)	Dip Dir. (deg)	TVD (ft)	+N/-S (ft)	+E/-W (ft)	Northing (ft)	Easting (ft)	Latitude Longitude
East Platte 01-01H (B	- plan hits target center	0.00	0.00	5,815.00	-4,734.52	2,459.67	368,190.23	2,373,708.01	40° 20' 10.849 N 104° 9' 33.959 W
- Point									

Casing Points					
Measured Depth (ft)	Vertical Depth (ft)	Name	Casing Diameter (")	Hole Diameter (")	
800.00	800.00	9-5/8"	9-5/8	13-1/2	
6,087.81	5,815.00	7"	7	8-3/4	
11,030.95	5,815.00	4 1/2"	4-1/2	6	

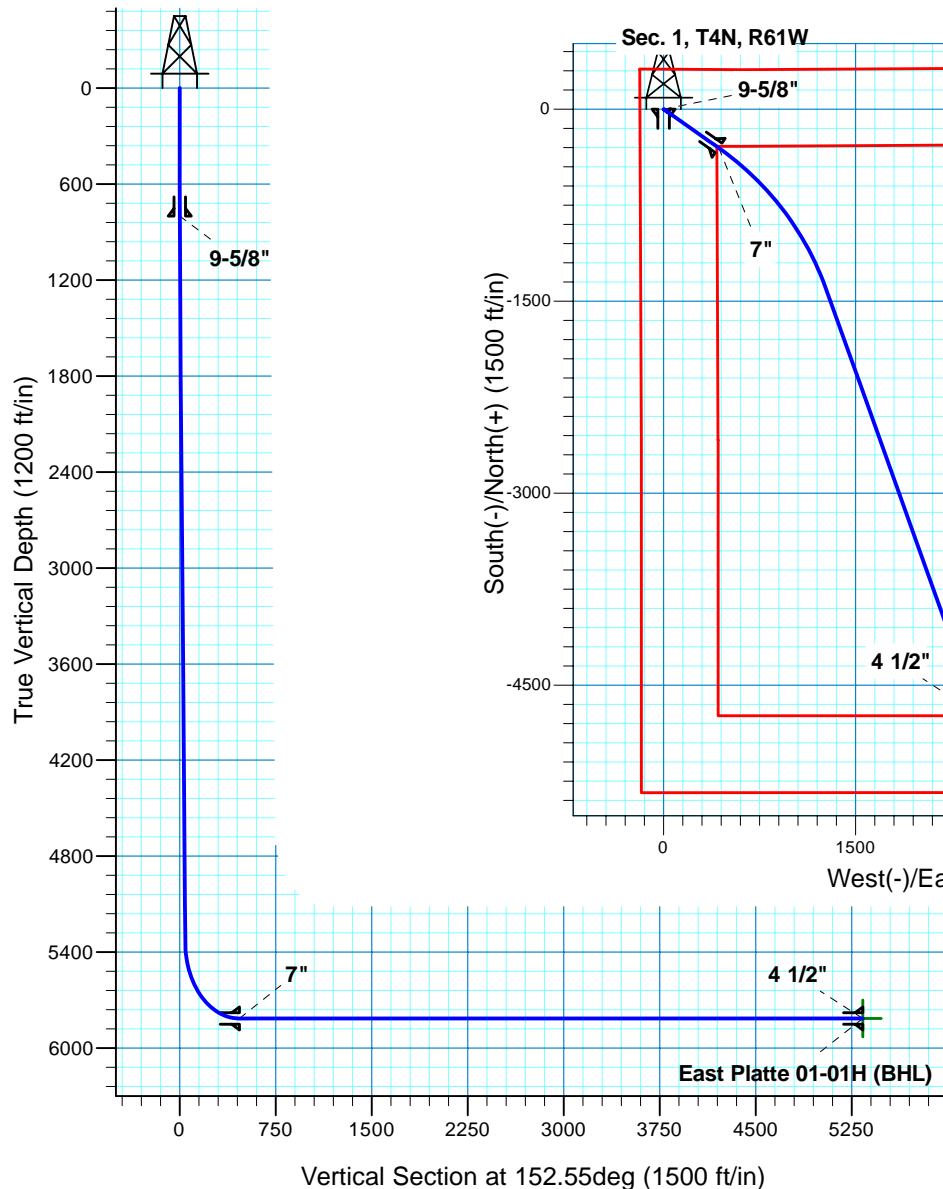
East Platte 01-01H

Section 1 T4N R61W

Weld County, CO

Surface Location

NAD 1927 (NADCON CONUS) Colorado North 501
Ground Elevation: 4460.00 RIG @ 4482.00ft (TBD)
Northing Easting Latitude Longitude
372887.27 2371177.52 40° 20' 57.638 N 104° 10' 5.722 W



T M
Azimuths to True North
Magnetic North: 8.51°
Magnetic Field
Strength: 53203.8snT
Dip Angle: 67.12°
Date: 5/3/2011
Model: IGRF200510

Project: DJ - Hereford Ranch
Site: East Platte 01-01H
Well: East Platte 01-01H
Plan: APD Directional Plan

SECTION DETAILS

Sec	MD	Inc	Azi	TVD	+N/-S	+E/-W	DLeg	TFace	VSec	Target
1	0.00	0.00	0.00	0.00	0.00	0.00	0.00	0.00	0.00	
2	1000.00	0.00	0.00	1000.00	0.00	0.00	0.00	0.00	0.00	
3	1064.55	0.65	125.14	1064.55	-0.21	0.30	1.00	125.14	0.32	
4	5343.19	0.65	125.14	5342.91	-27.95	39.71	0.00	0.00	43.11	
5	6087.81	90.00	125.14	5815.00	-302.75	430.14	12.00	0.00	466.96	East Platte 01-01H (ICP)
6	7495.07	90.00	160.32	5815.00	-1405.14	1268.99	2.50	90.00	1831.94	East Platte 01-01H (BHL)
7	11030.95	90.00	160.32	5815.00	-4734.52	2459.67	0.00	0.00	5335.32	East Platte 01-01H (BHL)

TARGET DETAILS

Name	TVD	+N/-S	+E/-W	Northing	Easting	Latitude	Longitude	Shape
East Platte 01-01H (BHL)	5815.00	-4734.52	2459.67	368190.23	2373708.01	40° 20' 10.849 N	104° 9' 33.959 W	Point