

accuracy or correctness, costs, damages, interpretations are a

the ac
r loss
se in

Co. LLC

Param
le fo
rees

st gu
onsil
mplo
le.

do not
resp
for en
nedu

Colorado

Other Services	<p>cannot e liab s, ag t Pric</p>
----------------	---

None

and we
ir pa
our o
our cu

Elevation

7	4	Some
6	5	ence
5	4	y an
4	3	et ou
3	2	S

G.L. 4639

er me
ul ne
n ma
nditic
omr

[illegible]

al or
ss on
erpre
s and

electric
of gro
y int
term

[illegible]

es from
ne ca
g from
r ge

ence
t in t
sultin
to ou

infer
except
the re
ject |

base
shall n
by a

ons
we s
inec

oping
and
susta

				>>>
--	--	--	--	-----


are
tion,
d or

Where
tions
pretat
curre

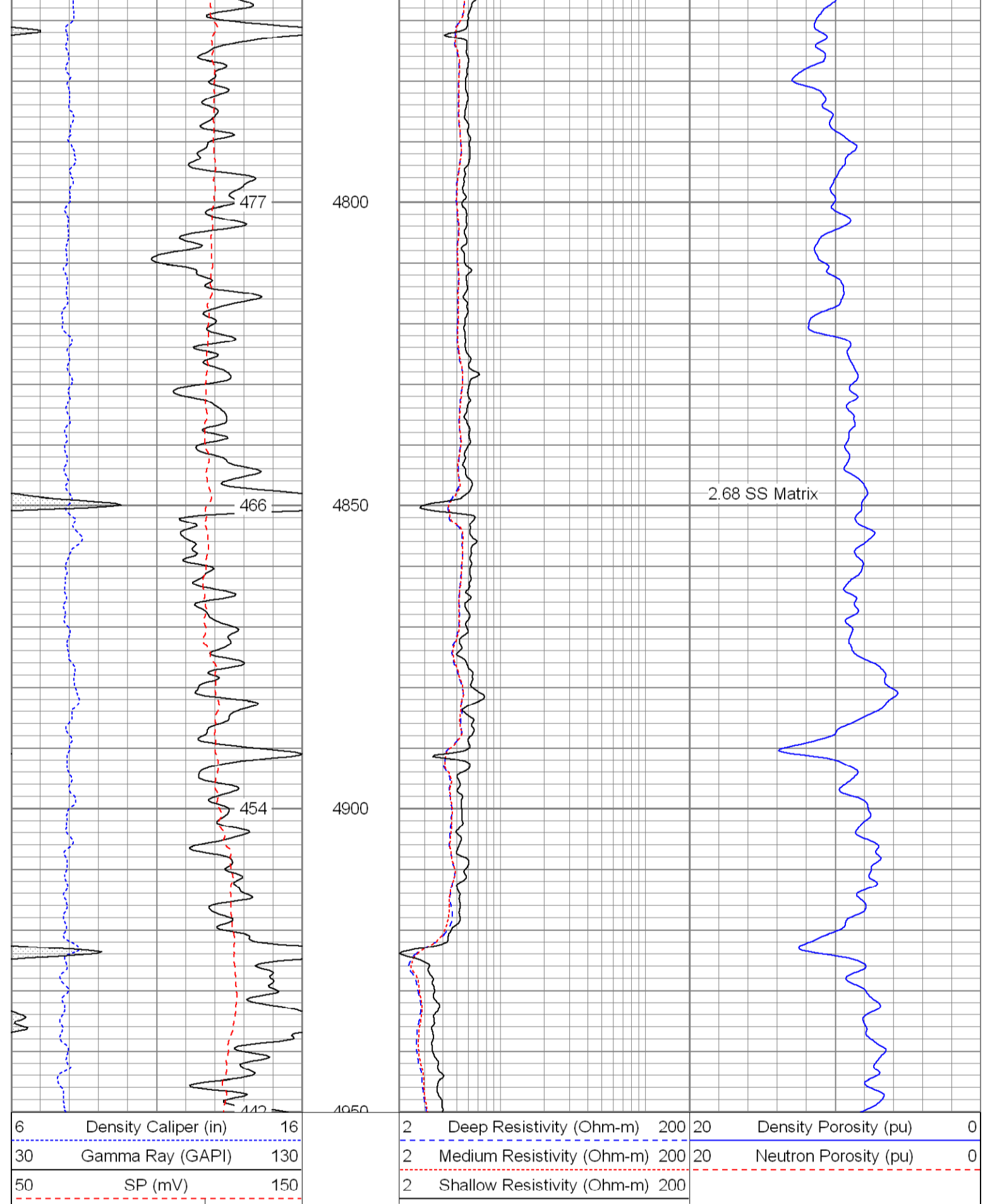
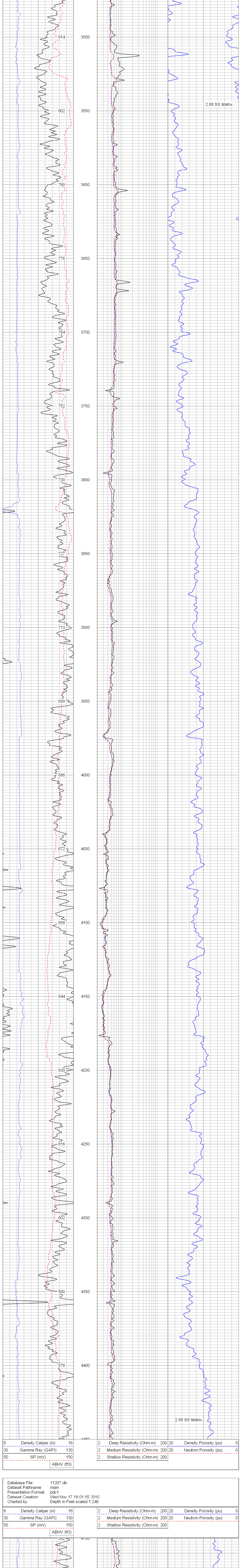
[illegible]

<< F

Dodge	All of exp		
-------	------------	--	--

 PHOENIX SURVEYS, INC.		COMPENSATED DENSITY COMPLETED NEUTRON DUAL INDUCTION	
Company Bonanza Creek Operating Co. LLC Well Antelope 44-18 Field Wattenberg County Weld State/Province Colorado		Location SHL - 1367 FSL & 781 FSL NESE BHL 681 FSL & 643 FSL SESE Sec - 16, TWP - 3N, Rge - 62W	
Log Measured From KB Drilling Measured From KB		GL Elevation 4639 K.F. 4658 D.F. 4653 G.L. 4539	Other Services None
Date November 17, 2010 Run Number 6142 Depth Logger 6137 Bottom Logged Interval 6137 Top Log Interval Casing Casing Diameter 457 Casing Weight 457 Bit Size 7-7/8" Type Fluid in Hole Chem Seal Density / Viscosity 9.2 / 60 Source of Samples Flowline Run @ Mass, Temp 3.60 @ 55 F Run @ Mass, Temp 2.30 @ 55 F Run @ RT / Time 4.70 @ 55 Sec Run @ RT / Time 1.18 @ 158 F Time Curation Skipped Time Logger on Bottom 0900 Maximum Recorded Temperature 186 F Minimum Recorded Temperature 53 F Location Brighton, CO Recorded By Salaman Drawn By Cunningham	Comments Annular volume calculated for 4.5" casing Xtreme Rig 14 Thank you for using Phoenix Surveys!! API #: 05-123-31860		

010	
240	
2	Deep Resistivity (Ohm)
2	Medium Resistivity (Ohm)
2	Shallow Resistivity (Ohm)



Database File:		11207.db	
Dataset Pathname:		main	
Presentation Format:		pdc	
Dataset Creation:		Wed Nov 17 18:01:55 2010	
Charted by:		Depth in Feet scaled 1:240	

6	Caliper (in)	16	2	Deep Resistivity (Ohm-m)	200	20	Density Porosity (pu)	0
0	Gamma Ray (GAPI)	200	2	Medium Resistivity (Ohm-m)	200	20	Neutron Porosity (pu)	0
0	SP (mV)	200	2	Shallow Resistivity (Ohm-m)	200	20		

