

Steil Surveying Services, LLC

1102 West 19th Street P.O. BOX 2073

Cheyenne, Wyoming 82001

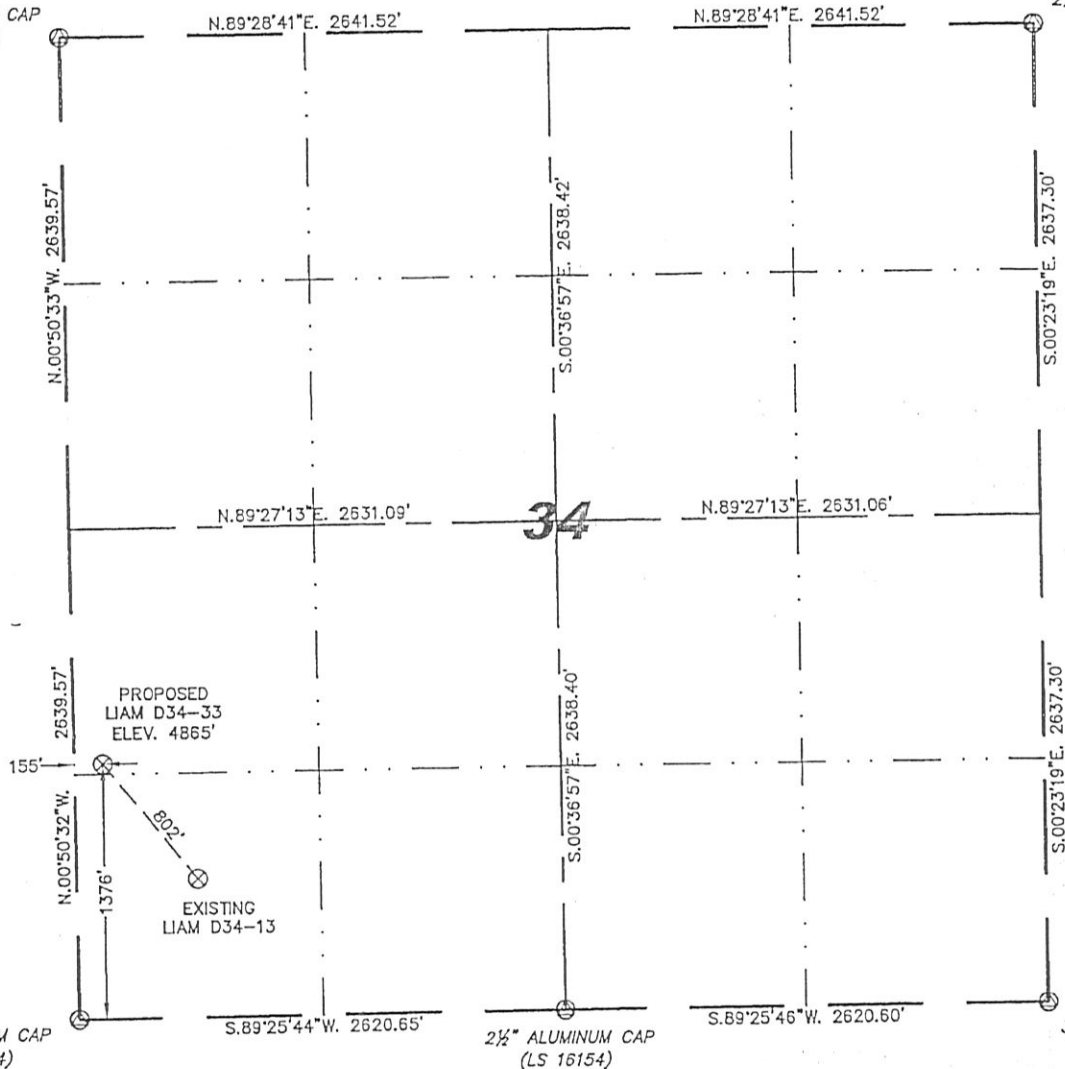
# WELL LOCATION CERTIFICATE

THIS MAP DOES NOT REPRESENT A BOUNDARY SURVEY

SECTION 34  
TOWNSHIP 3 NORTH  
RANGE 64 WEST

2 1/2" ALUMINUM CAP  
(LS 23501)

2 1/2" ALUMINUM CAP  
(LS 23501)



0 1000

Scale: 1" = 1000'

IN ACCORDANCE WITH A REQUEST FROM BRIAN DeROSE - NOBLE ENERGY INC, STEIL SURVEYING SERVICES, LLC HAS DETERMINED THE LOCATION OF THE LIAM D34-33 WELL TO BE 1376' FSL, 155' FWL, AS MEASURED AT NINETY (90) DEGREES FROM THE SECTION LINES, SECTION 34, TOWNSHIP 3 NORTH, RANGE 64 WEST, 6TH PRINCIPLE MERIDIAN, WELD COUNTY, COLORADO.

I HEREBY CERTIFY THAT THIS WELL LOCATION CERTIFICATE WAS PREPARED BY ME, OR UNDER MY DIRECT SUPERVISION, THAT THE FIELD WORK WAS COMPLETED ON 03/11/2011, FOR AND ON BEHALF OF NOBLE ENERGY INC, THAT IT IS NOT A LAND SURVEY PLAT OR AN IMPROVEMENT SURVEY PLAT, AND THAT IT IS NOT TO BE RELIED UPON FOR ESTABLISHMENT OF FENCE, BUILDING, OR OTHER FUTURE IMPROVEMENT LINES.

## NOTES:

- 1) BASIS OF BEARINGS FOR THIS MAP ARE BASED UPON GPS OBSERVATIONS MADE ON 03/09/2011 BETWEEN MONUMENTS LOCATED AT THE SOUTHEAST SECTION CORNER AND THE NORTHEAST SECTION CORNER OF SAID SECTION AND WITH ALL BEARINGS SHOWN HEREON RELATIVE THERETO.
- 2) COORDINATES SHOWN ARE COLORADO STATE PLANE (NORTH ZONE) NAD 83.
- 3) ELEVATIONS ARE BASED UPON NGS CPUS SOLUTION NAVD 88 DATUM.
- 4) THE NEAREST EXISTING WELL IS: LIAM D34-13, 802' SOUTHEAST.
- 5) SEE LOCATION DRAWING FOR ALL IMPROVEMENTS WITHIN VISIBLE IMPROVEMENTS LIMIT.
- 6) THE LOCATION FALLS IN PASTURE LAND.

LATITUDE & LONGITUDE (NAD 83 SURFACE HOLE):

LATITUDE: N 40.17842°  
LONGITUDE: W 104.54641°  
PDOP: 2.0  
QUARTER-QUARTER: NW/4SW/4  
NEAREST PROPERTY LINE: 155' WEST

## LEGEND

- (A) FOUND SURVEY MONUMENT PER MONUMENT RECORD - EXCEPTIONS NOTED.
- (C) CALCULATED DIMENSION

NOTICE: According to Colorado law you MUST commence any legal action based upon any defect in this W.L.C. within three years after you first discover such defect. In no event may any action based upon any defect in this W.L.C. be commenced more than ten years from this said date of the certification shown hereon.

David C. Holmes  
Professional Land Surveyor Registration No. 32828  
State of Colorado

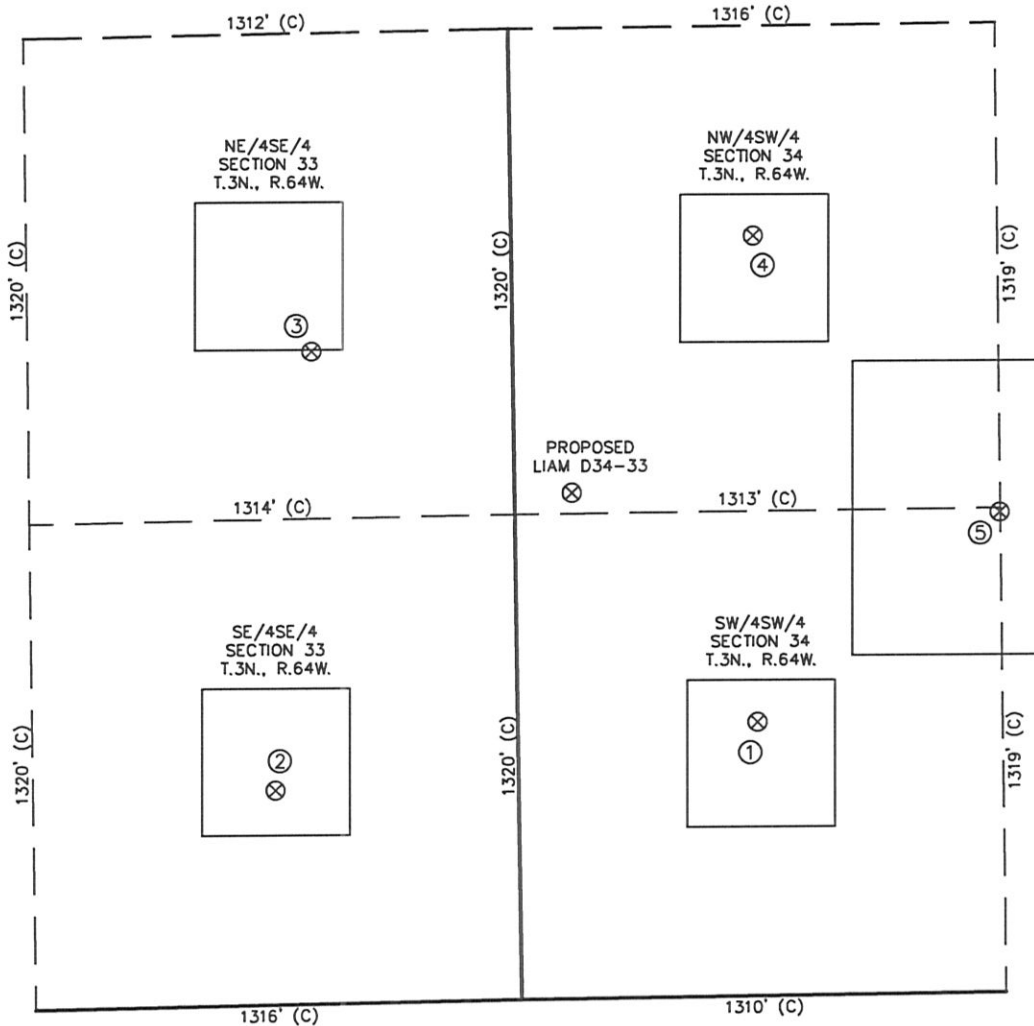
JOB #:11086

Completed 03/17/2011



# SKETCH - LIAM D34-33

SECTION 34  
TOWNSHIP 3 NORTH  
RANGE 64 WEST



①	②	③	④	⑤
LIAM D34-13 SW/SW SEC. 34 746' FSL 648' FWL EL 4872' N 40.17668 W 104.54464 PDOP 2.3	GUTTERSEN D33-16 SE/SE SEC. 33 583' FSL 659' FEL EL 4851' N 40.17623 W 104.54932 PDOP 2.1	GUTTERSEN D33-9 NE/SE SEC. 33 1774' FSL 544' FEL EL 4860' N 40.17950 W 104.54892 PDOP 2.2	LIAM D34-12 NW/SW SEC. 34 2068' FSL 654' FWL EL 4870' N 40.18031 W 104.54464 PDOP 2.2	LIAM D34-25 SW/SW SEC. 34 1308' FSL 1311' FWL EL 4872' N 40.17823 W 104.54228 PDOP 2.3

## NOTES:

- THIS SKETCH DOES NOT REPRESENT A BOUNDARY SURVEY.
- THE DATUM FOR THE LATITUDES AND LONGITUDES ON THIS SKETCH IS NAD83.

