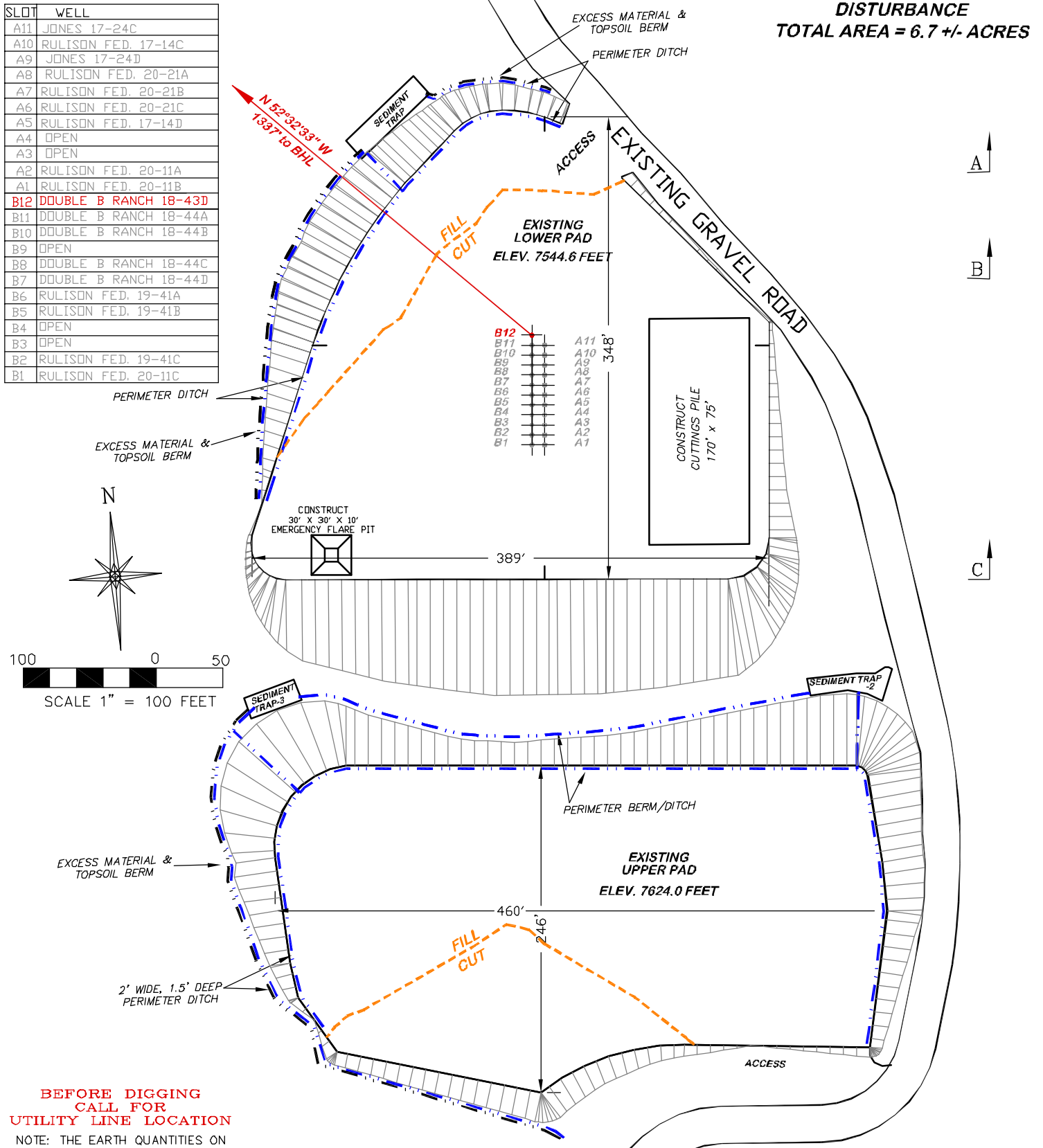


SLOT	WELL
A11	JONES 17-24C
A10	RULISON FED. 17-14C
A9	JONES 17-24D
A8	RULISON FED. 20-21A
A7	RULISON FED. 20-21B
A6	RULISON FED. 20-21C
A5	RULISON FED. 17-14D
A4	OPEN
A3	OPEN
A2	RULISON FED. 20-11A
A1	RULISON FED. 20-11B
B12	DOUBLE B RANCH 18-43D
B11	DOUBLE B RANCH 18-44A
B10	DOUBLE B RANCH 18-44B
B9	OPEN
B8	DOUBLE B RANCH 18-44C
B7	DOUBLE B RANCH 18-44D
B6	RULISON FED. 19-41A
B5	RULISON FED. 19-41B
B4	OPEN
B3	OPEN
B2	RULISON FED. 19-41C
B1	RULISON FED. 20-11C

**DISTURBANCE**  
**TOTAL AREA = 6.7 +/- ACRES**



**BEFORE DIGGING  
CALL FOR  
UTILITY LINE LOCATION**

NOTE: THE EARTH QUANTITIES ON  
THIS DRAWING ARE ESTIMATED AND  
THE USE OF SAID QUANTITIES IS AT  
THE RESPONSIBILITY OF THE USER.

**17M PAD**

**DRG** **RIFFIN & ASSOCIATES, INC.**  
1414 ELK ST., ROCK SPRINGS, WY 82901  
(307) 362-5028

**CONSTRUCTION LAYOUT DRAWING 1 OF 5**

**NOBLE ENERGY, INC.**  
**DOUBLE B RANCH 18-43D**  
**SWSW SECTION 17, T7S, R94W, 6th P.M.**  
**GARFIELD COUNTY, COLORADO**

**ESTIMATED EARTHWORK**

ITEM	CUT	FILL	TOPSOIL	EXCESS
PAD	NA	NA	NA	NA
PIT	NA			NA
TOTALS	NA	NA	NA	NA

**DRAWN: 5/17/11 - RCR**

**SCALE: 1" = 100'**

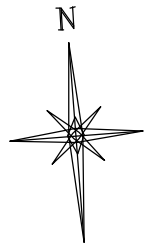
**REVISED: NA**

**DRG JOB No. 15454**

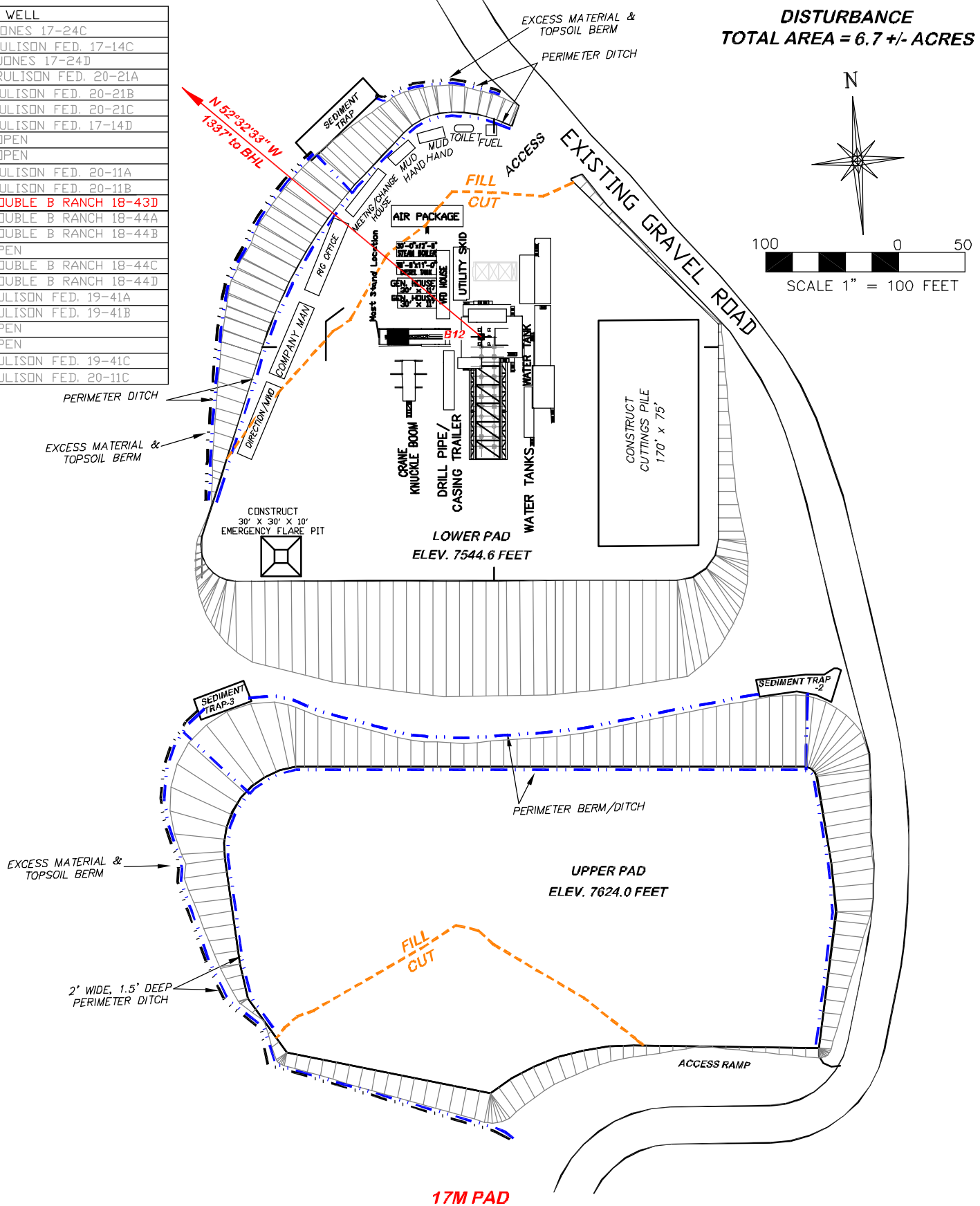
**EXHIBIT 2**

SLOT	WELL
A11	JONES 17-24C
A10	RULISON FED. 17-14C
A9	JONES 17-24D
A8	RULISON FED. 20-21A
A7	RULISON FED. 20-21B
A6	RULISON FED. 20-21C
A5	RULISON FED. 17-14D
A4	OPEN
A3	OPEN
A2	RULISON FED. 20-11A
A1	RULISON FED. 20-11B
B12	DOUBLE B RANCH 18-43D
B11	DOUBLE B RANCH 18-44A
B10	DOUBLE B RANCH 18-44B
B9	OPEN
B8	DOUBLE B RANCH 18-44C
B7	DOUBLE B RANCH 18-44D
B6	RULISON FED. 19-41A
B5	RULISON FED. 19-41B
B4	OPEN
B3	OPEN
B2	RULISON FED. 19-41C
B1	RULISON FED. 20-11C

***DISTURBANCE***  
***TOTAL AREA = 6.7 +/- ACRES***



SCALE 1" = 100 FEET



(307) 362-5028

**RIFFIN & ASSOCIATES, INC.**  
1414 ELK ST., ROCK SPRINGS, WY 82901

**DRAWN: 5/17/11 - RCR**

**SCALE: 1" = 100'**

**REVISED: NA**

DRG JOB No. 15454

EXHIBIT 2A

**CONSTRUCTION LAYOUT DRAWING 2 OF 5**

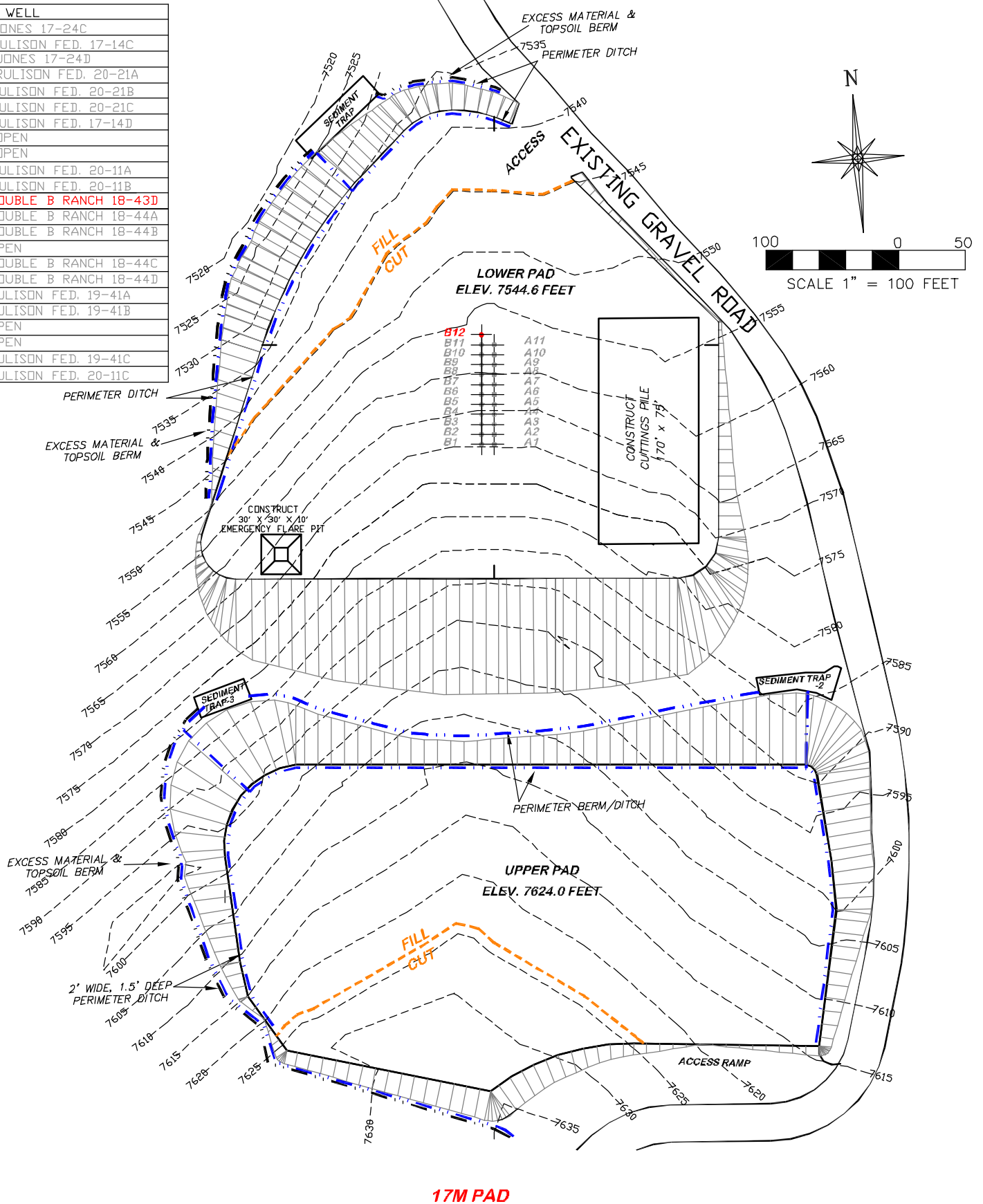
## RIG LAYOUT

**NOBLE ENERGY, INC.**

**DOUBLE B RANCH 18-43D**

**SWSW SECTION 17, T7S, R94W, 6th P.M.  
GARFIELD COUNTY, COLORADO**

SLOT	WELL
A11	JONES 17-24C
A10	RULISON FED. 17-14C
A9	JONES 17-24D
A8	RULISON FED. 20-21A
A7	RULISON FED. 20-21B
A6	RULISON FED. 20-21C
A5	RULISON FED. 17-14D
A4	OPEN
A3	OPEN
A2	RULISON FED. 20-11A
A1	RULISON FED. 20-11B
B12	DOUBLE B RANCH 18-43D
B11	DOUBLE B RANCH 18-44A
B10	DOUBLE B RANCH 18-44B
B9	OPEN
B8	DOUBLE B RANCH 18-44C
B7	DOUBLE B RANCH 18-44D
B6	RULISON FED. 19-41A
B5	RULISON FED. 19-41B
B4	OPEN
B3	OPEN
B2	RULISON FED. 19-41C
B1	RULISON FED. 20-11C



**RIFFIN & ASSOCIATES, INC.**  
1414 ELK ST., ROCK SPRINGS, WY 82901

(307) 362-5028

**DRAWN: 5/17/11 - RCR**

**REVISED: NA**

**SCALE: 1" = 100'**

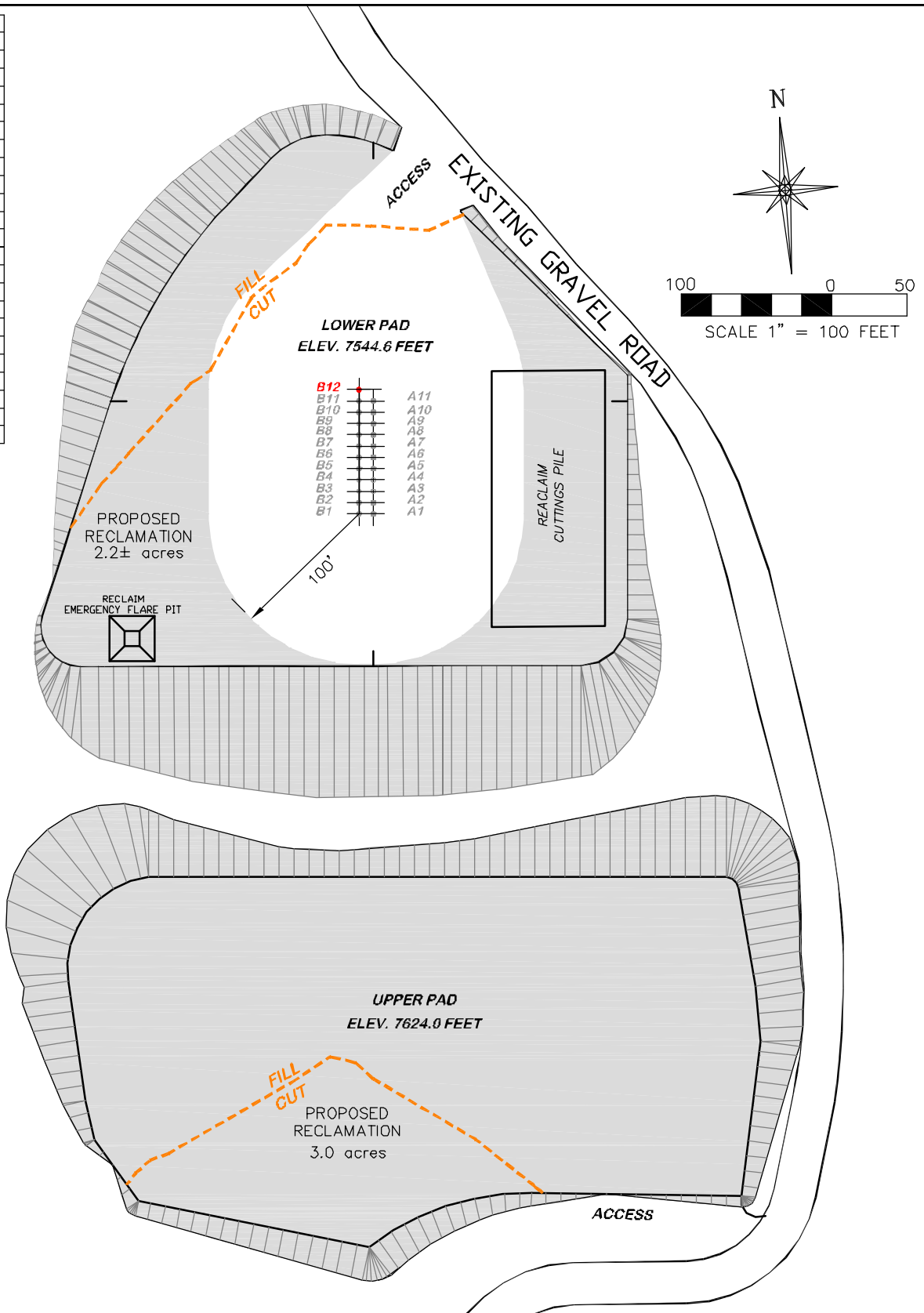
**DRG JOB No. 15454**

**EXHIBIT 2B**

**CONSTRUCTION LAYOUT DRAWING 3 OF 5**  
**PRE CONSTRUCTION CONTOURS**

**NOBLE ENERGY, INC.**  
**DOUBLE B RANCH 18-43D**  
**SWSW SECTION 17, T7S, R94W, 6th P.M.**  
**GARFIELD COUNTY, COLORADO**

SLOT	WELL
A11	JONES 17-24C
A10	RULISON FED. 17-14C
A9	JONES 17-24D
A8	RULISON FED. 20-21A
A7	RULISON FED. 20-21B
A6	RULISON FED. 20-21C
A5	RULISON FED. 17-14D
A4	OPEN
A3	OPEN
A2	RULISON FED. 20-11A
A1	RULISON FED. 20-11B
B12	DOUBLE B RANCH 18-43D
B11	DOUBLE B RANCH 18-44A
B10	DOUBLE B RANCH 18-44B
B9	OPEN
B8	DOUBLE B RANCH 18-44C
B7	DOUBLE B RANCH 18-44D
B6	RULISON FED. 19-41A
B5	RULISON FED. 19-41B
B4	OPEN
B3	OPEN
B2	RULISON FED. 19-41C
B1	RULISON FED. 20-11C



**17M PAD**



**RIFFIN & ASSOCIATES, INC.**

(307) 362-5028

1414 ELK ST., ROCK SPRINGS, WY 82901

**DRAWN: 5/17/11 - RCR**

**SCALE: 1" = 100'**

**REVISED: NA**

**DRG JOB No. 15454**

**EXHIBIT 2C**

**CONSTRUCTION LAYOUT DRAWING 4 OF 5**

**PROPOSED RECLAMATION**

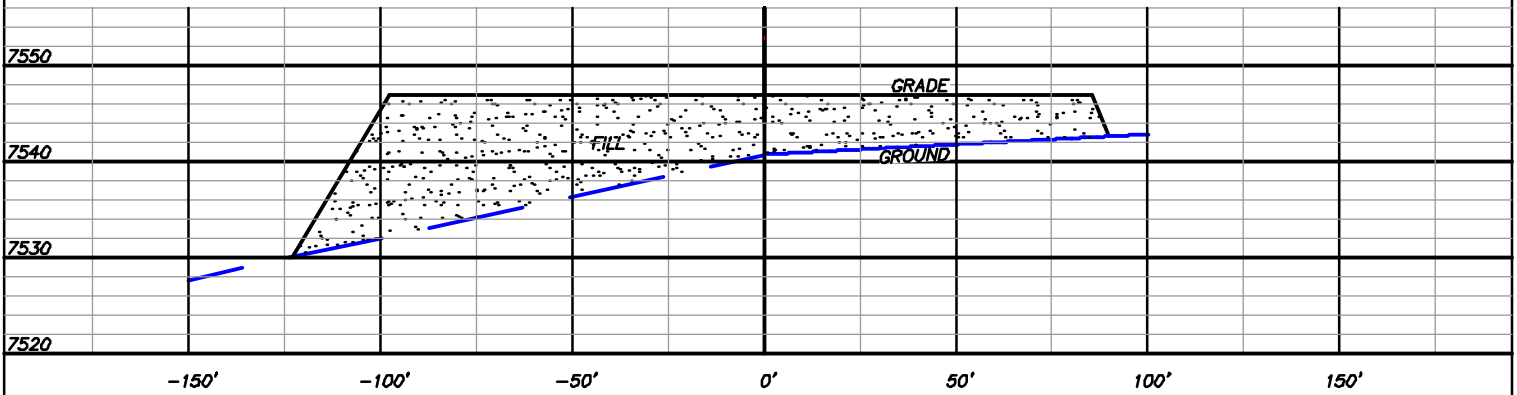
**NOBLE ENERGY, INC.**

**DOUBLE B RANCH 18-43D**

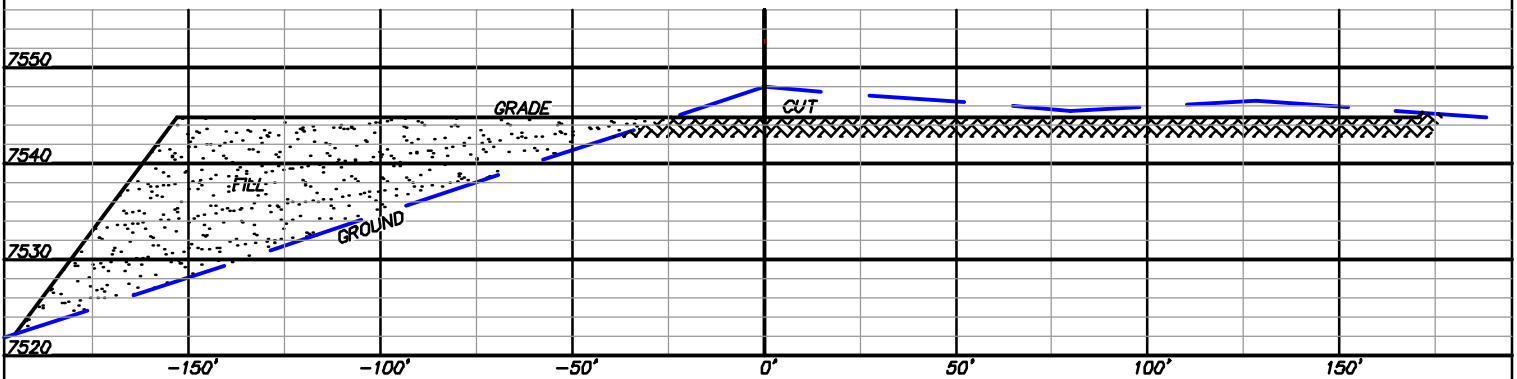
**SWSW SECTION 17, T7S, R94W, 6th P.M.**

**GARFIELD COUNTY, COLORADO**

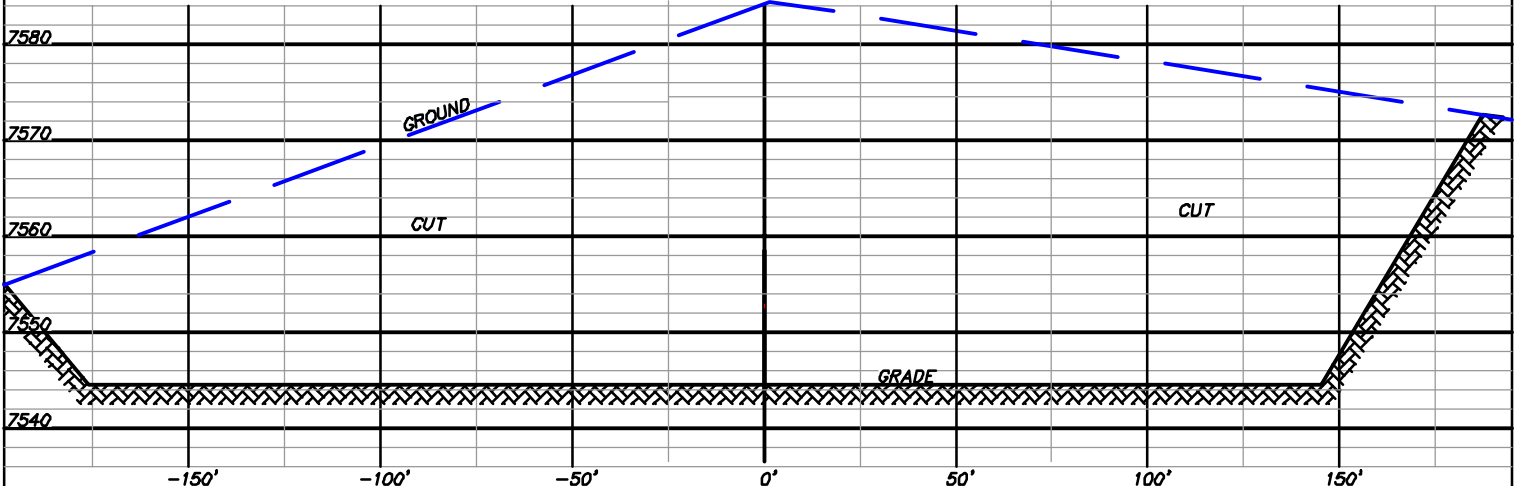
### CROSS SECTION A



### CROSS SECTION B



### CROSS SECTION C



17M LOWER PAD



**DRG RIFFIN & ASSOCIATES, INC.**  
1414 ELK ST., ROCK SPRINGS, WY 82901

DATE: 11/20/08 - WG

SCALE: H: 1" = 50', V: 1"=20'

REVISED: NA

JOB No. 15454

EXHIBIT 3 - LOWER PAD

**CONSTRUCTION LAYOUT DRAWING 5 OF 5**

**PRE - CONSTRUCTION CROSS SECTIONS**

**NOBLE ENERGY, INC.**

**DOUBLE B RANCH 18-43D**

**SWSW SECTION 17, T7S, R94W, 6th P.M.**

**GARFIELD COUNTY, COLORADO**

**UNGRADED ELEVATION: 7557.8'**

**FINISHED ELEVATION: 7544.6'**