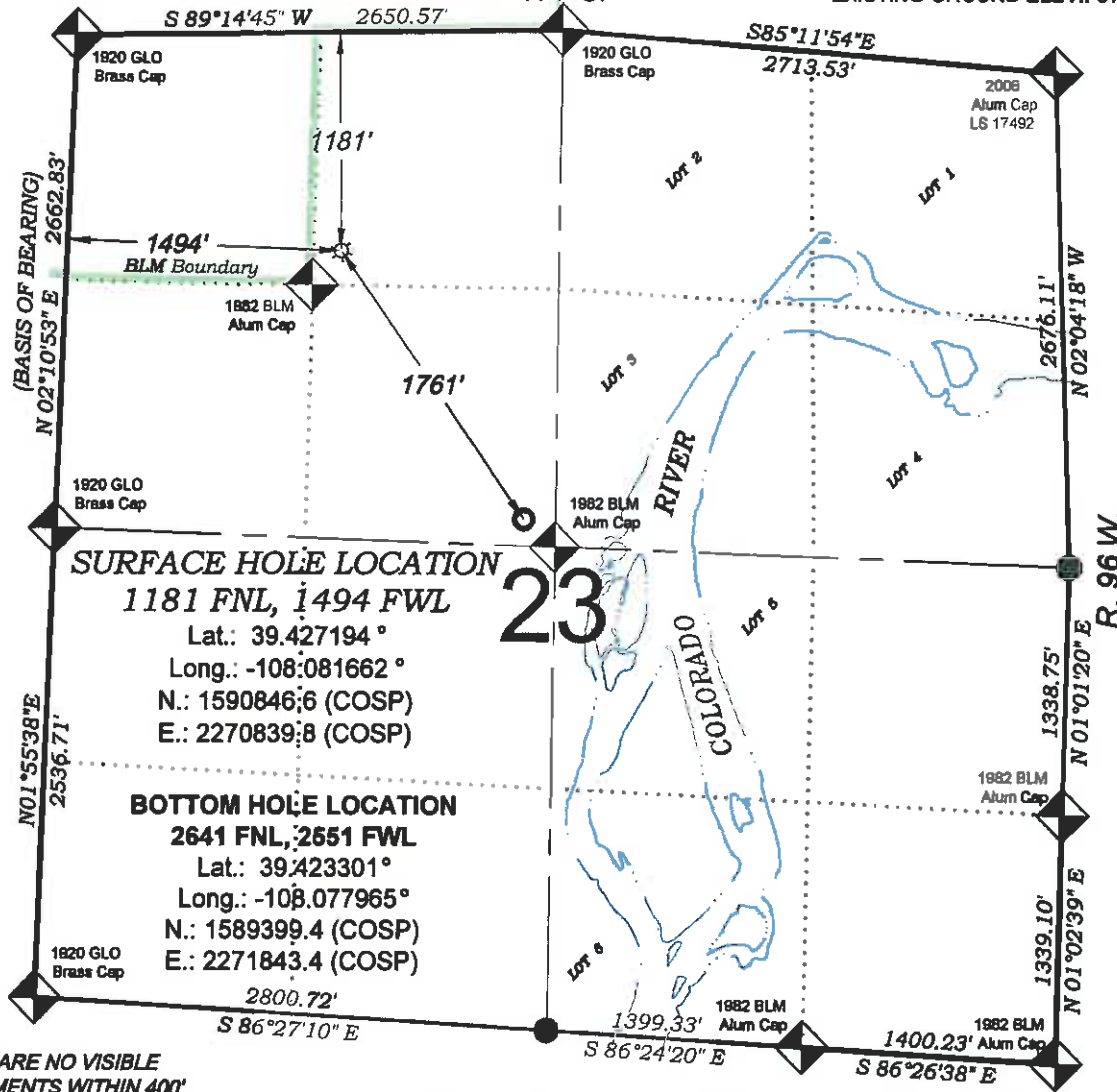


Bosley SG 422-23

T. 7 S.

PROPOSED PAD ELEV.: 5133.4
EXISTING GROUND ELEV.: 5133.5

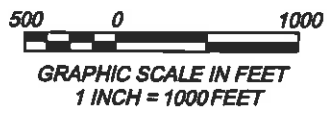


SURFACE HOLE LOCATION
1181 FNL, 1494 FWL
Lat.: 39.427194°
Long.: -108.081662°
N.: 1590846.6 (COSP)
E.: 2270839.8 (COSP)

BOTTOM HOLE LOCATION
2641 FNL, 2551 FWL
Lat.: 39.423301°
Long.: -108.077965°
N.: 1589399.4 (COSP)
E.: 2271843.4 (COSP)

23

THERE ARE NO VISIBLE IMPROVEMENTS WITHIN 400' OF THIS LOCATION



- LEGEND -

- FIELD LOCATED SECTION MONUMENTS AS DESCRIBED
- FIELD SURVEYED WELL LOCATION
- CALCULATED BOTTOM HOLE LOCATION
- CALCULATED SECTION CORNER LOCATION

SURVEYORS STATEMENT

I, MICHAEL J. LANGHORNE, A REGISTERED LAND SURVEYOR IN THE STATE OF COLORADO DO HEREBY CERTIFY THAT THE SURVEY SHOWN HEREON WAS PREPARED UNDER MY DIRECT SUPERVISION AND HAS BEEN STAKED ON THE GROUND AS SHOWN ON THE PLAT AND CHECKING THAT THIS MAP IS A TRUE REPRESENTATION THEREOF.

Michael Langhorne

MICHAEL J. LANGHORNE, COLORADO REGISTRATION NO. 36572
FOR AND ON BEHALF OF
BOOKCLIFF SURVEY SERVICES, INC.

REFERENCES

- 1) DEPENDENT RESURVEY & SUBDIVISION OF SECTIONS T. 7 S., R. 96 W., 6th P.M. (GLO PLAT)
- 2) U.S.G.S. QUAD: PARACHUTE, CO

NOTES

- 1) ELEVATIONS BASED ON N.A.V.D. 1988 PUBLISHED COORDINATES.
- 2) LATITUDES AND LONGITUDES ARE BASE ON NAD 83, PUBLISHED COORDINATES
- 3) STATE PLANE COORDINATES ARE BASED ON COLORADO CENTRAL ZONE, U.S. SURVEY FEET.
- 4) ELEVATION MASK SET TO 15"
- 5) GPS OPERATOR J. KIRKPATRICK. OBSERVED A PDOP 1.6 ON SURVEY POINT NUMBER 102304.
- 6) SURFACE AND BOTTOM HOLE LOCATIONS ARE MEASURED 90° FROM SECTION LINES.

WELL LOCATION PLAT Prepared for:

Williams Williams Production, RMT

NE1/4 NW1/4, SECTION 23
T. 7 S., R. 96 W. of the 6th P.M.
GARFIELD COUNTY, COLORADO

SURVEY DATE:	6/28/10
MAP DATE:	3/22/11
SCALE:	1" = 1000'
PLAT:	1 of 1
PROJECT:	Williams