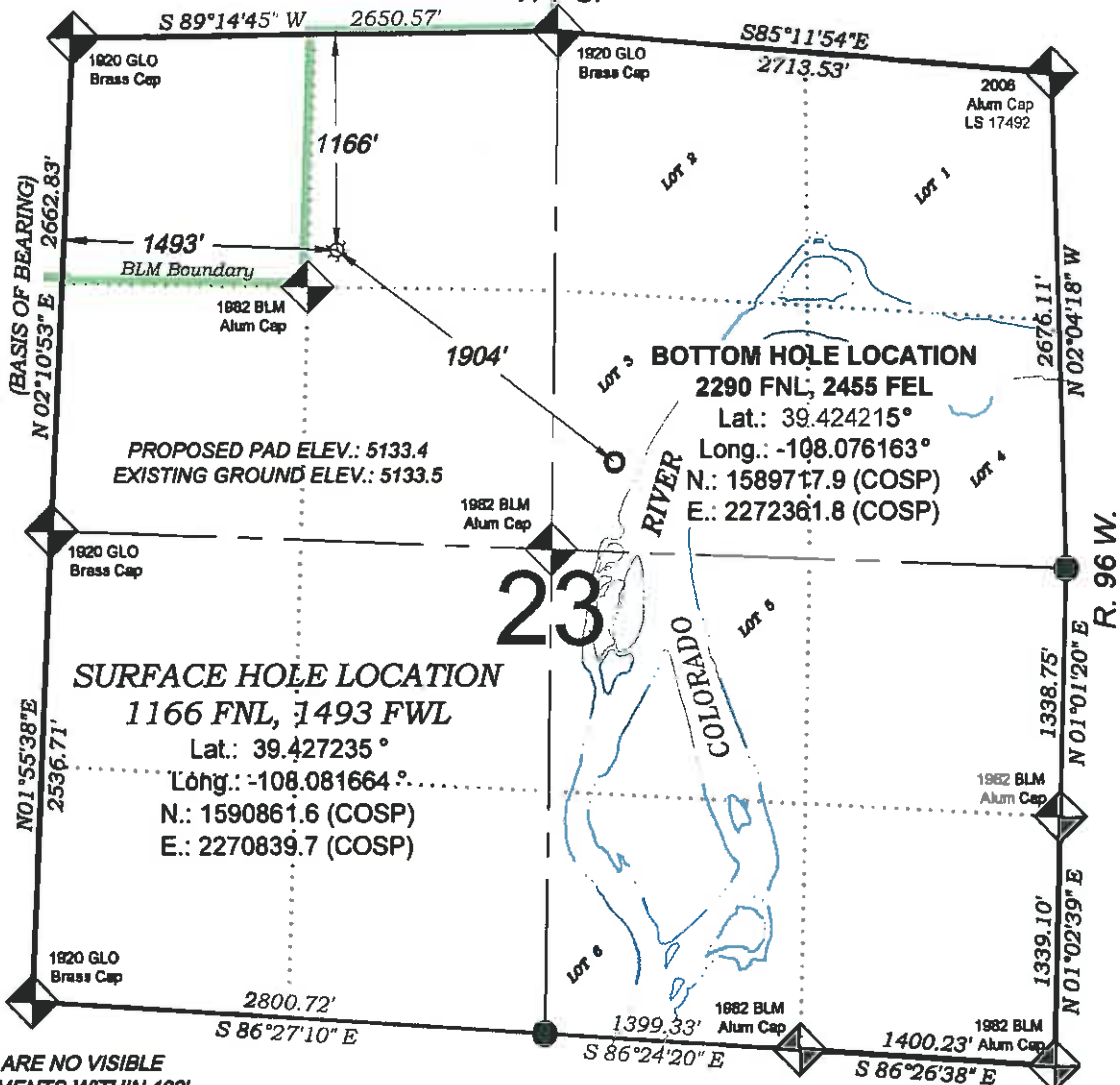


# Bosley SG 432-23

T. 7 S.



PROPOSED PAD ELEV.: 5133.4  
EXISTING GROUND ELEV.: 5133.5

## SURFACE HOLE LOCATION

1166 FNL, 1493 FWL

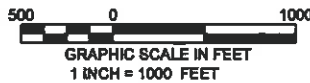
Lat.: 39.427235°  
Long.: -108.081664°  
N.: 1590861.6 (COSP)  
E.: 2270839.7 (COSP)

## BOTTOM HOLE LOCATION

2290 FNL, 2455 FEL

Lat.: 39.424215°  
Long.: -108.076163°  
N.: 1589717.9 (COSP)  
E.: 2272361.8 (COSP)

THERE ARE NO VISIBLE IMPROVEMENTS WITHIN 400' OF THIS LOCATION



## - LEGEND -

FIELD LOCATED SECTION MONUMENTS AS DESCRIBED

FIELD SURVEYED WELL LOCATION

CALCULATED BOTTOM HOLE LOCATION

CALCULATED SECTION CORNER LOCATION

## SURVEYORS STATEMENT

I, MICHAEL J. LANGHORNE, A REGISTERED LAND SURVEYOR IN THE STATE OF COLORADO DO HEREBY CERTIFY THAT THE SURVEY SHOWN HEREON WAS PREPARED UNDER MY DIRECT SUPERVISION AND HAS BEEN STAKED ON THE GROUND AS SHOWN ON THE PLAT AND CHECKING THAT THIS MAP IS A TRUE REPRESENTATION THEREOF.

*Michael J. Langhorne*  
36572  
MICHAEL J. LANGHORNE, COLORADO REGISTRATION NO. 36572  
FOR AND ON BEHALF OF  
BOOKCLIFF SURVEY SERVICES, INC.

## REFERENCES

- DEPENDENT RESURVEY & SUBDIVISION OF SECTIONS T. 7 S., R. 96 W., 6th P.M (GLO PLAT)
- U.S.G.S. QUAD: PARACHUTE, CO

REVISED: 5/18/11

## NOTES

- ELEVATIONS BASED ON N.A.V.D. 1988 PUBLISHED COORDINATES.
- LATITUDES AND LONGITUDES ARE BASE ON NAD 83, PUBLISHED COORDINATES
- STATE PLANE COORDINATES ARE BASED ON COLORADO CENTRAL ZONE, U.S. SURVEY FEET.
- ELEVATION MASK SET TO 15"
- GPS OPERATOR J. KIRKPATRICK, OBSERVED A PDOP 1.6 ON SURVEY POINT NUMBER 102304.
- SURFACE AND BOTTOM HOLE LOCATIONS ARE MEASURED 90° FROM SECTION LINES.

WELL LOCATION PLAT Prepared for:

**Williams. Williams Production, RMT**

NE1/4 NW1/4, SECTION 23  
T. 7 S., R. 96 W. of the 6th P.M.  
GARFIELD COUNTY, COLORADO

201 East Third Street  
P.O. Box 1100  
P.O. Box 625-1300  
Fax (970) 625-2773



SURVEY DATE: 6/28/10  
MAP DATE: 4/11/11  
SCALE: 1" = 1000'  
PLAT: 1 of 1  
PROJECT: Williams