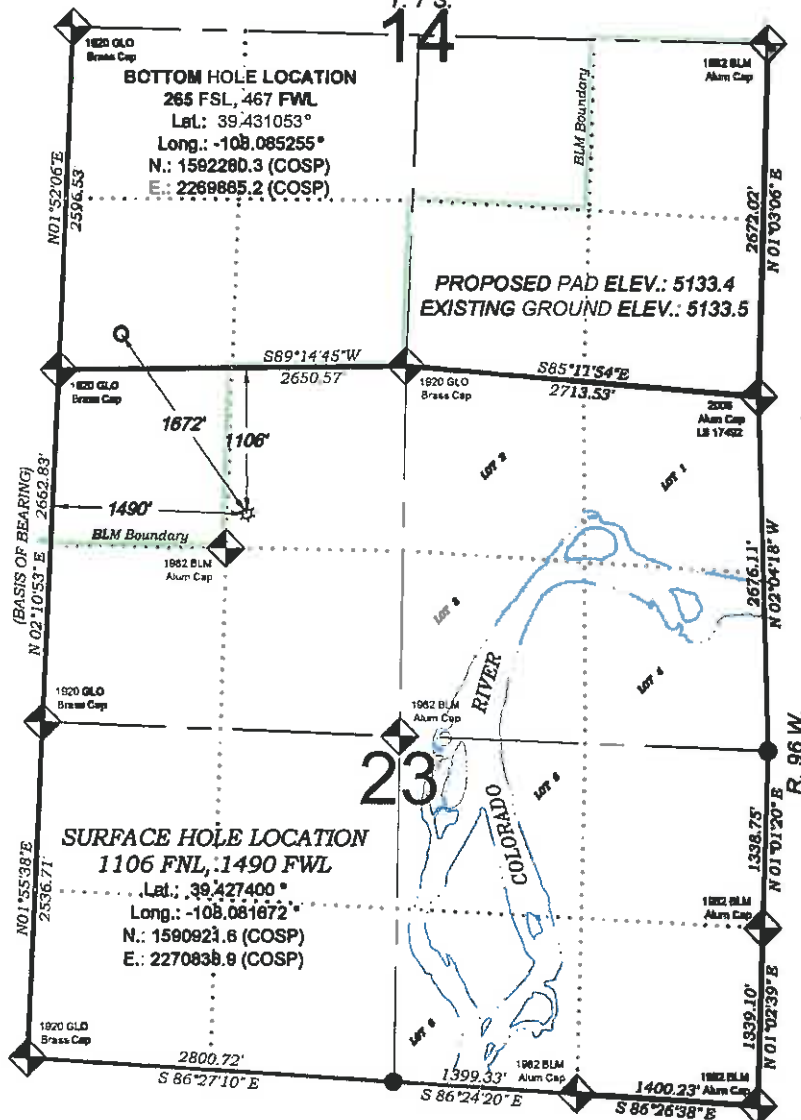


# Bosley GM 514-14

T. 7 S.  
14



THERE ARE NO VISIBLE IMPROVEMENTS WITHIN 400' OF THIS LOCATION

## - LEGEND -

FIELD LOCATED SECTION MONUMENTS AS DESCRIBED

FIELD SURVEYED WELL LOCATION

CALCULATED BOTTOM HOLE LOCATION

CALCULATED SECTION CORNER LOCATION

### SURVEYORS STATEMENT

I, MICHAEL J. LANGHORNE, A REGISTERED LAND SURVEYOR IN THE STATE OF COLORADO DO HEREBY CERTIFY THAT THE SURVEY SHOWN HERON WAS PREPARED UNDER MY DIRECT SUPERVISION AND HAS BEEN STAKED ON THE GROUND AS SHOWN ON THE PLAT AND CHECKING THAT THIS MAP IS A TRUE REPRESENTATION THEREOF.

*Michael J. Langhorne*  
MICHAEL J. LANGHORNE, COLORADO REGISTRATION NO. 36572  
FOR AND ON BEHALF OF  
BOOKCLIFF SURVEY SERVICES, INC.

### REFERENCES

- DEPENDENT RESURVEY & SUBDIVISION OF SECTIONS T. 7 S., R. 96 W., 6th P.M (GLO PLAT)
- U.S.G.S. QUAD: PARACHUTE, CO

### NOTES

- ELEVATIONS BASED ON N.A.V.D. 1988 PUBLISHED COORDINATES.
- LATITUDES AND LONGITUDES ARE BASE ON NAD 83, PUBLISHED COORDINATES
- STATE PLANE COORDINATES ARE BASED ON COLORADO CENTRAL ZONE, U.S. SURVEY FEET.
- ELEVATION MASK SET TO 15"
- GPS OPERATOR J. KIRKPATRICK, OBSERVED A PDOP 1.6 ON SURVEY POINT NUMBER 102304.
- SURFACE AND BOTTOM HOLE LOCATIONS ARE MEASURED 90° FROM SECTION LINES.

WELL LOCATION PLAT Prepared for:  
**Williams** Williams Production, RMT

NE1/4 NW1/4, SECTION 23  
T. 7 S., R. 96 W. of the 6th P.M.  
GARFIELD COUNTY, COLORADO

SURVEY DATE: 6/28/10  
MAP DATE: 3/22/11  
SCALE: 1" = 1400'  
PLAT: 1 of 1  
PROJECT: Williams

400 East Third Street  
Boulder, Colorado 80501  
Ph: (970) 425-1330  
Fax: (970) 425-2173



**BOOKCLIFF**  
Survey Services, Inc.