



CEMENT BOND LOG

Mesa Wireline

Company	ENCANA OIL & GAS (USA) INC.		
Well	EAST RINN 2-8-15		
Field	WATTENBURG		
County	WELD		
State	COLORADO		
Company ENCANA OIL & GAS (USA) INC.		Other Services	
Well EAST RINN 2-8-15		NONE	
Field WATTENBURG			
County WELD		State COLORADO	
Location:	API # : 05123325030000		
SHL: NESW 15-2N-68W66M			
BHL:SWSW 15-2N-68W66M			
SEC. 15 TWP. 02N RGE. 68W			
Permanent Datum	GROUND LEVEL	Elevation	4874'
Log Measured From	KELLY BUSHING = 13 FT	K.B. 4887'	
Drilling Measured From	KELLY BUSHING	D.F. 4886'	
		G.L. 4874'	

Date	15 MAR 2011				
Run Number	ONE				
Depth Driller	8635'				
Depth Logger	8590'				
Bottom Logged Interval	8588'				
Top Log Interval	4200'				
Open Hole Size	7.875"				
Type Fluid	WATER				
Density / Viscosity	~8.34#				
Max. Recorded Temp.	N/A				
Estimated Cement Top	4473'				
Time Well Ready	N/A				
Time Logger on Bottom	N/A				
Equipment Number	W0061 / RBT04				
Location	AULT, CO				
Recorded By	D.SOLIS				
Witnessed By	G. CUMMINGS				
Borehole Record					
Run Number	Bit	From	To	Size	Tubing Record
ONE	12.25"	SURFACE	850'		Weight
TWO	7.875"	850'	8635'		From
					To
Casing Record	Size		Wgt/Ft	Top	Bottom
Surface String	8.625"		24.0#	SURFACE	850'
Prot. String					
Production String	4.5"		11.6#	SURFACE	8617'
Liner					

<<< Fold Here >>>

All interpretations are opinions based on inferences from electrical or other measurements and we cannot and do not guarantee the accuracy or correctness of any interpretation, and we shall not, except in the case of gross or willful negligence on our part, be liable or responsible for any loss, costs, damages, or expenses incurred or sustained by anyone resulting from any interpretation made by any of our officers, agents or employees. These interpretations are also subject to our general terms and conditions set out in our current Price Schedule.

Comments

RBT-GR-RAN IN COMBINATION.
NO LOGS AVAILABLE TO CORRELATE WITH.
SHORT JOINT @: 7670' TO 7693'.

WE APPRECIATE YOUR BUSINESS, MESA WIRELINE LLC, AULT, CO. (970) 834-2495

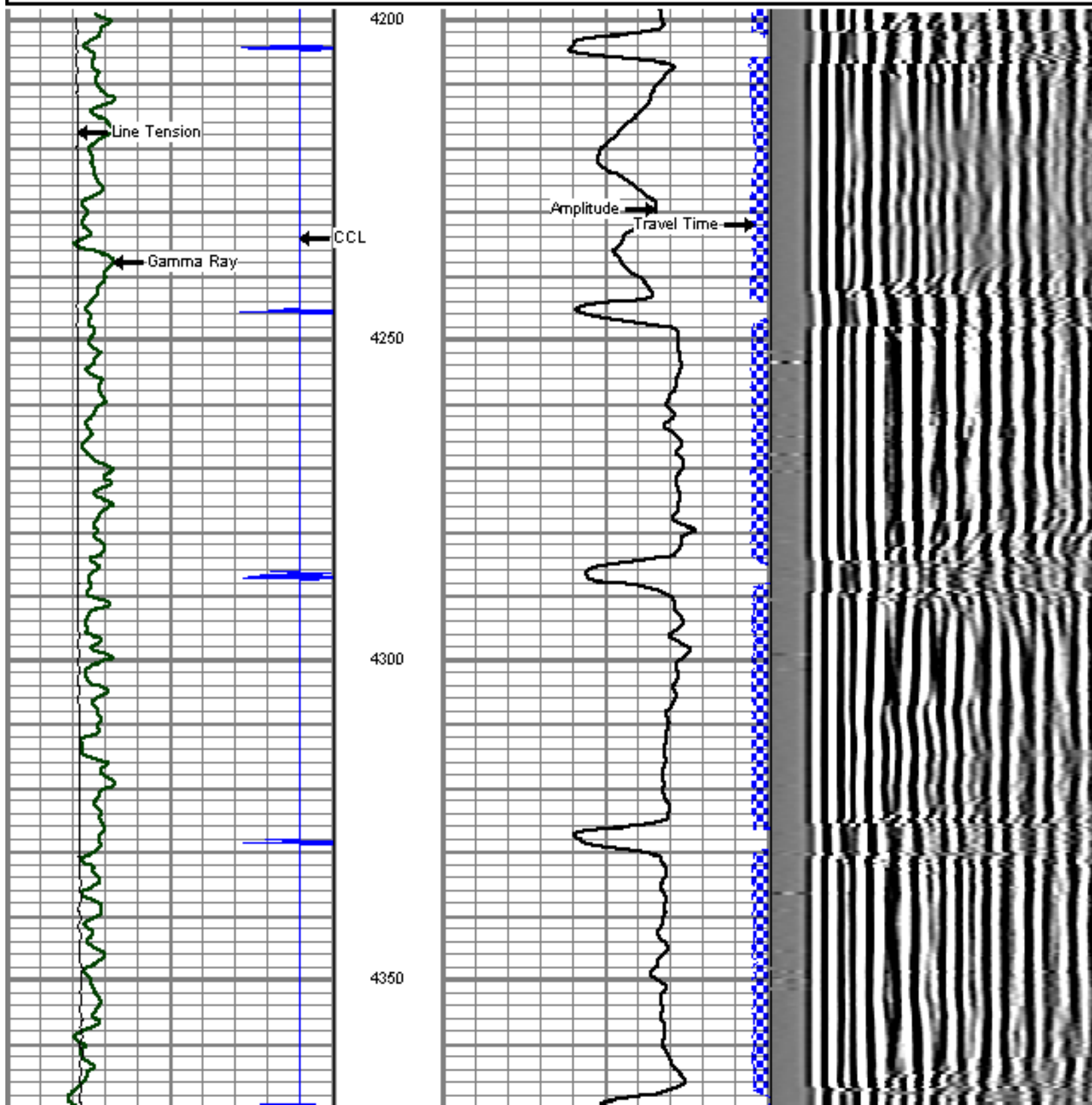


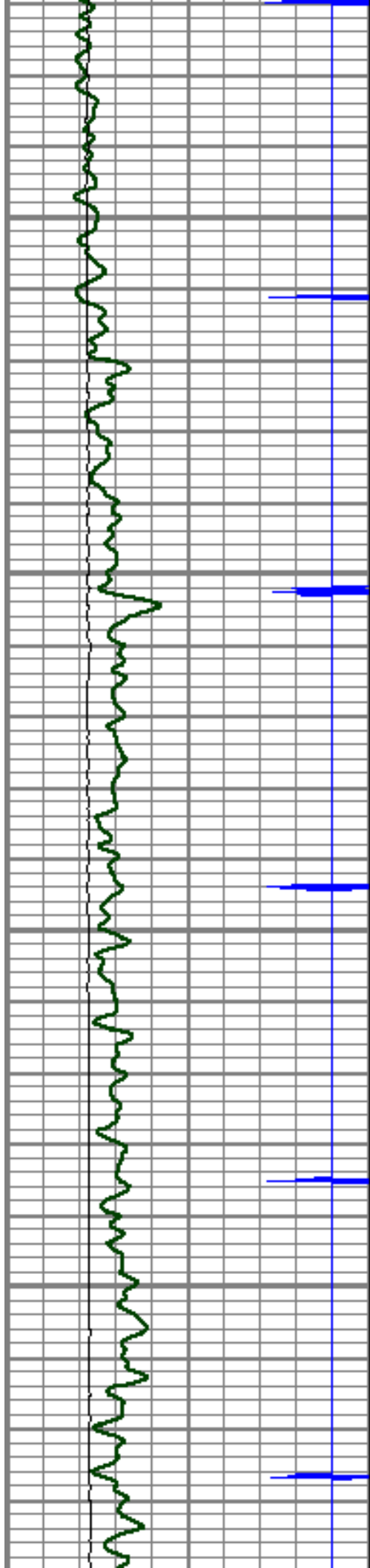
MAIN LOG SECTION

Database File: east rinn 2.db
Dataset Pathname: pass4.7
Presentation Format: cbl01son
Dataset Creation: Tue Mar 15 14:11:03 2011 by Calc SCH 110223
Charted by: Depth in Feet scaled 1:240

9	Collar Locator	-1
0	Gamma Ray (GAPI)	300
0	LTEN (lb)	4000

0	Amplified Amplitude (mV)	10	200	Variable Density	1200
0	Amplitude (mV)	100			
0	Travel Time (usec)	200			



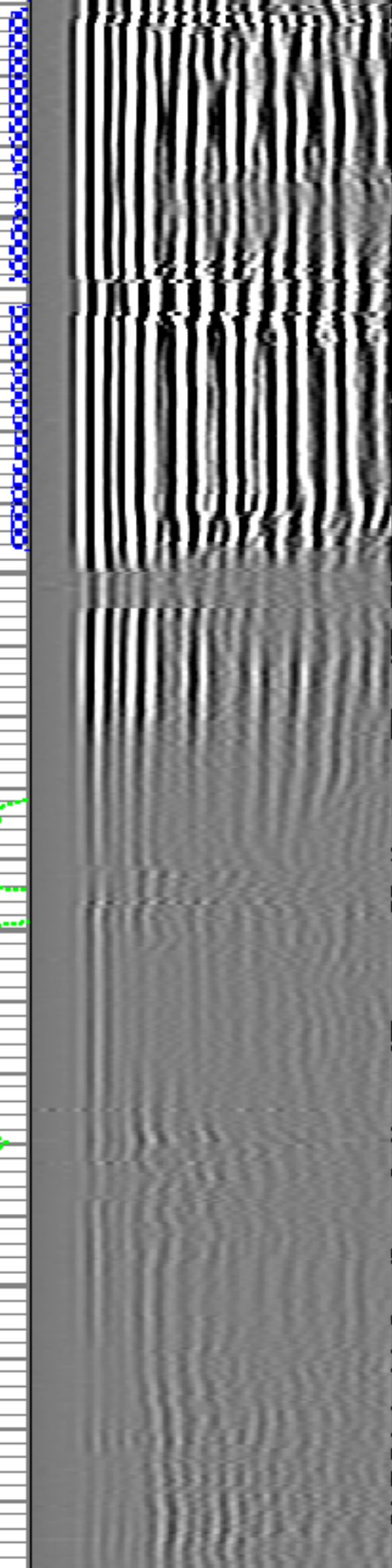
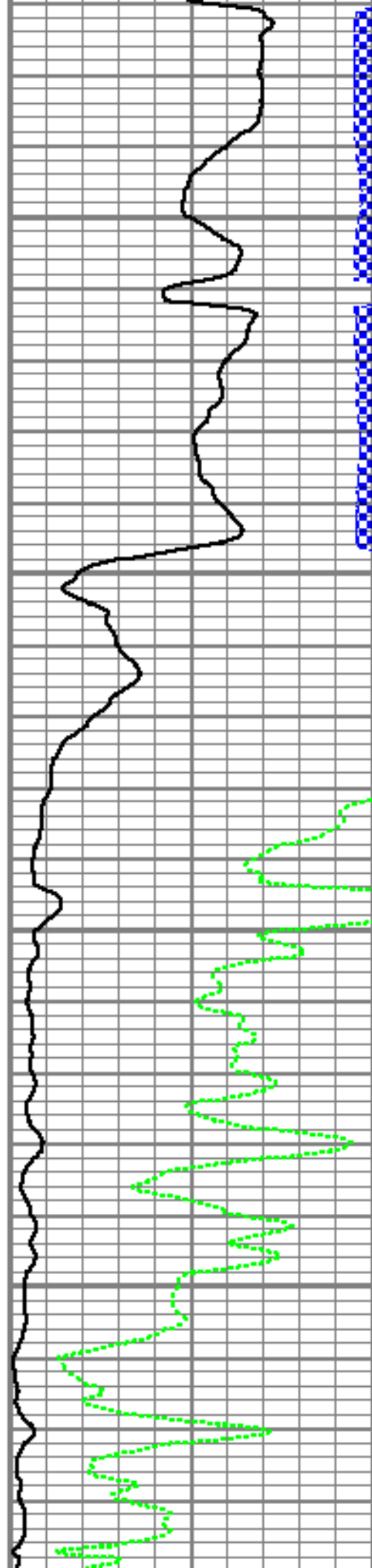


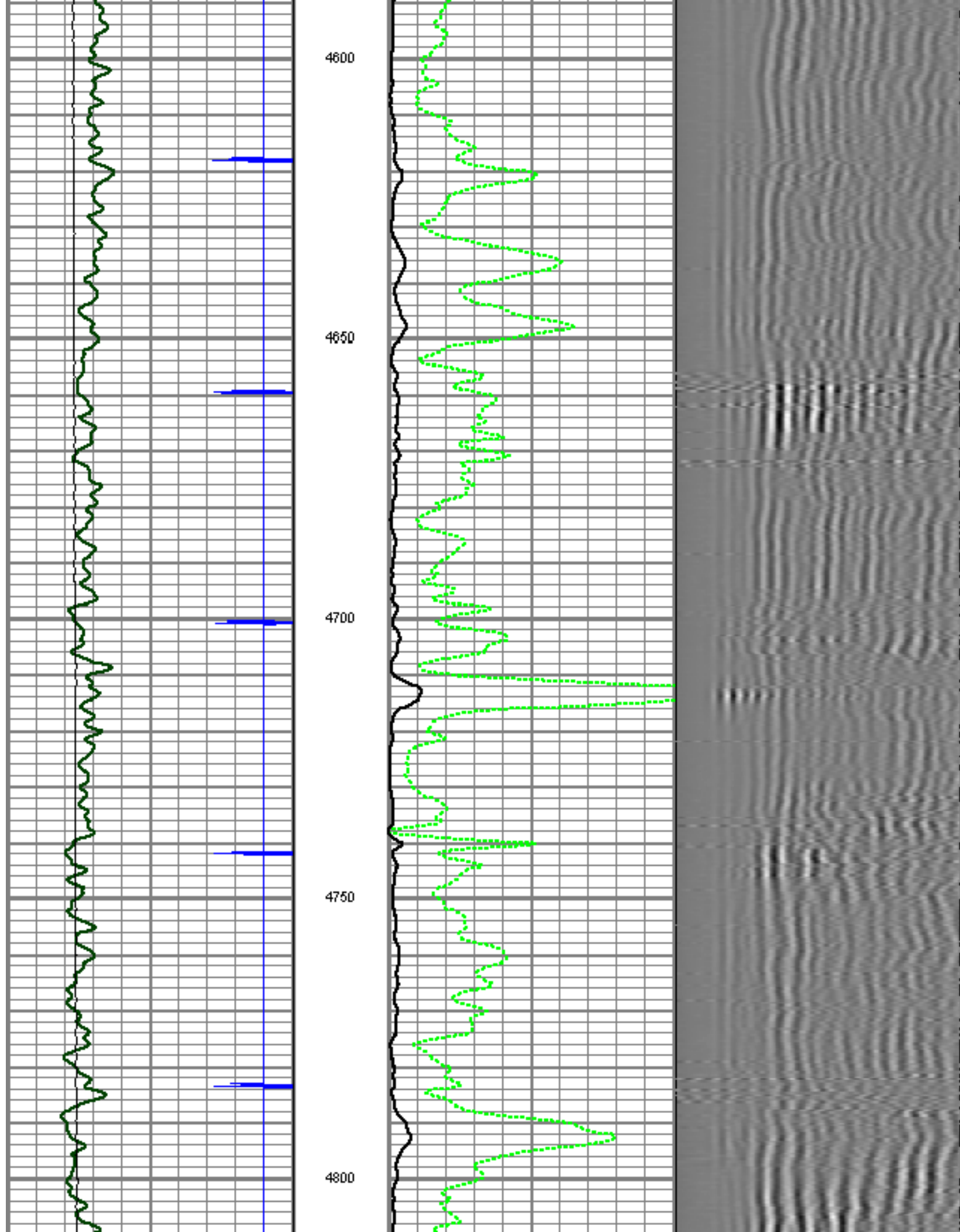
4400

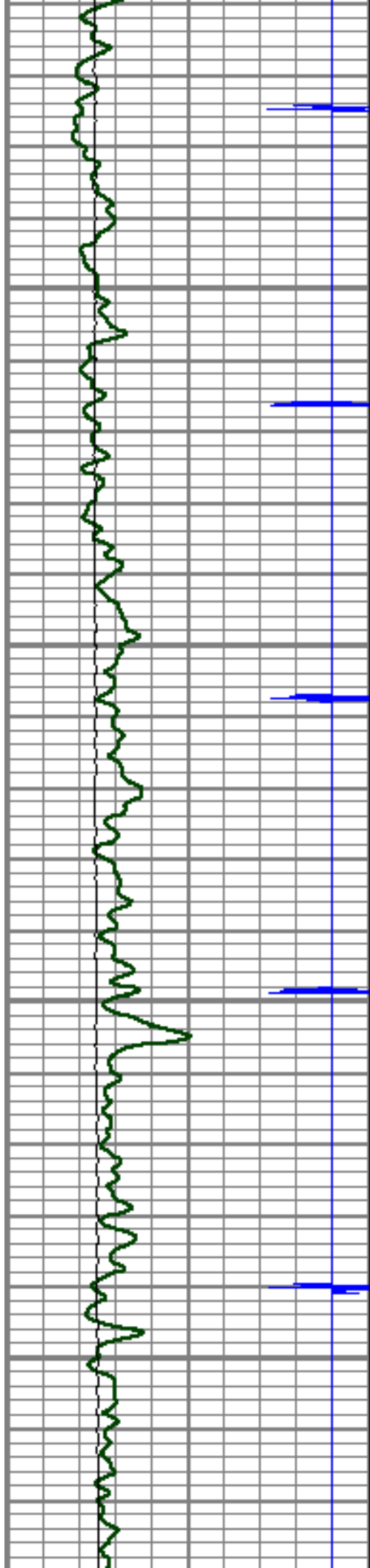
4450

4500

4550





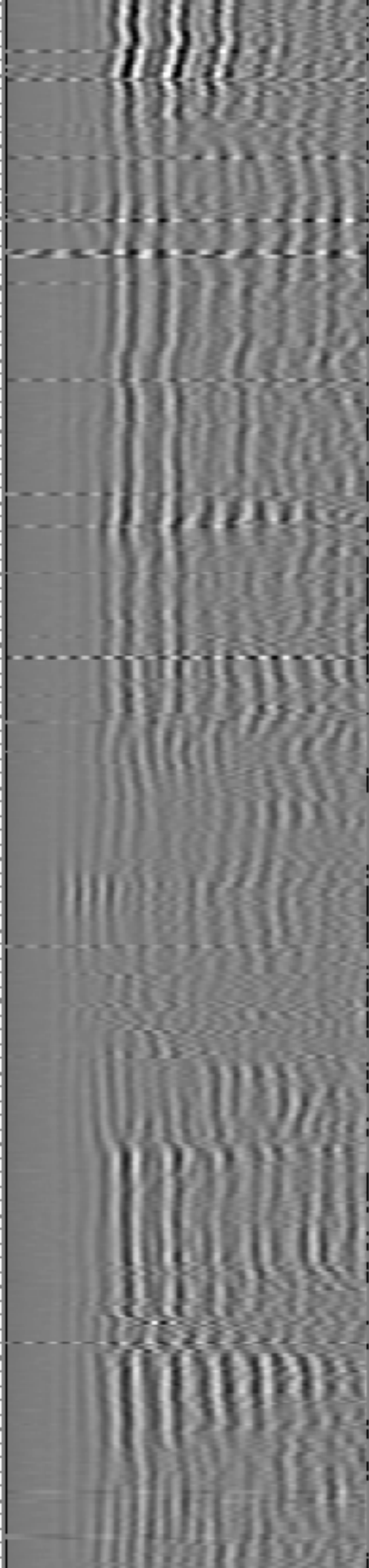
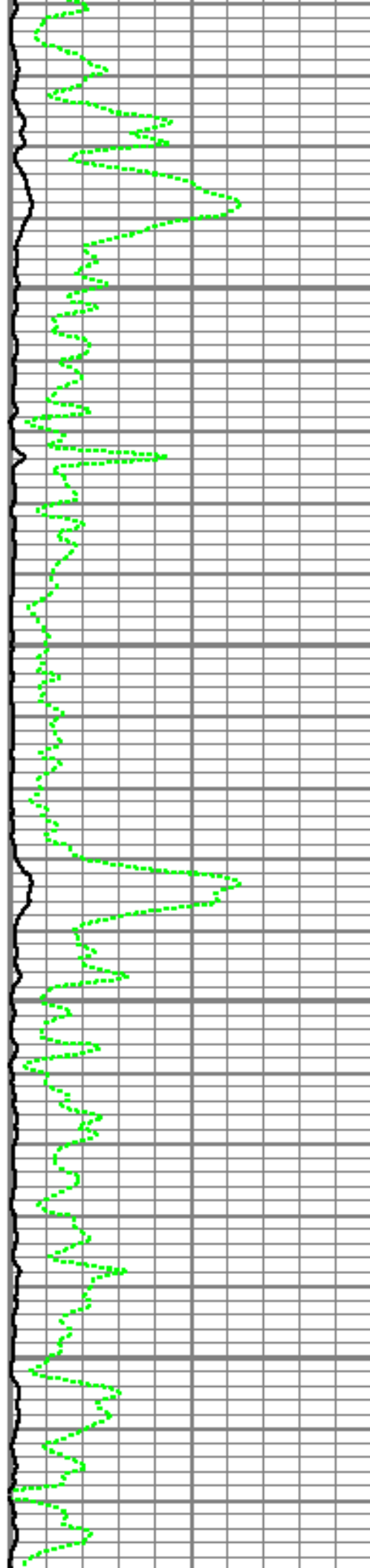


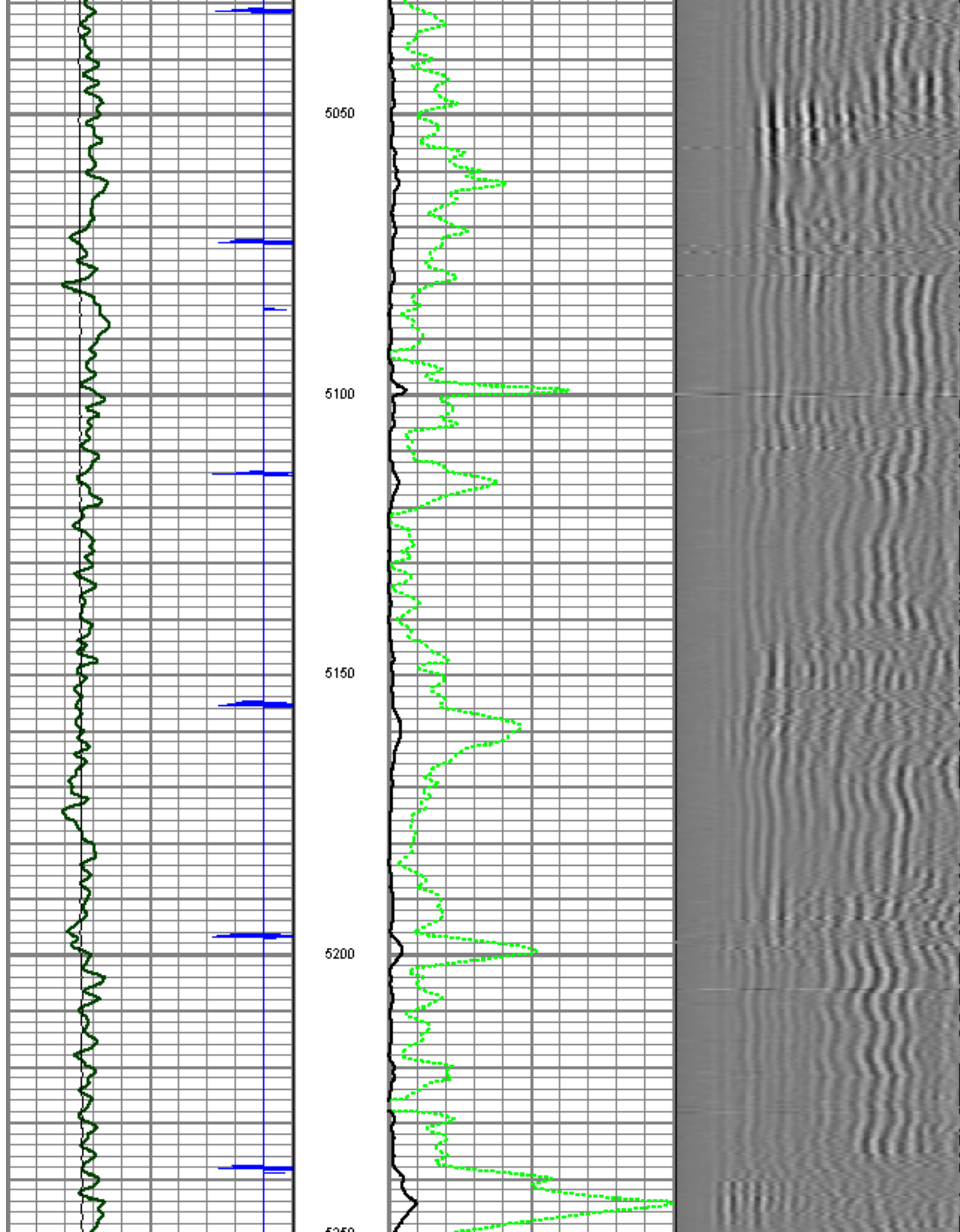
4850

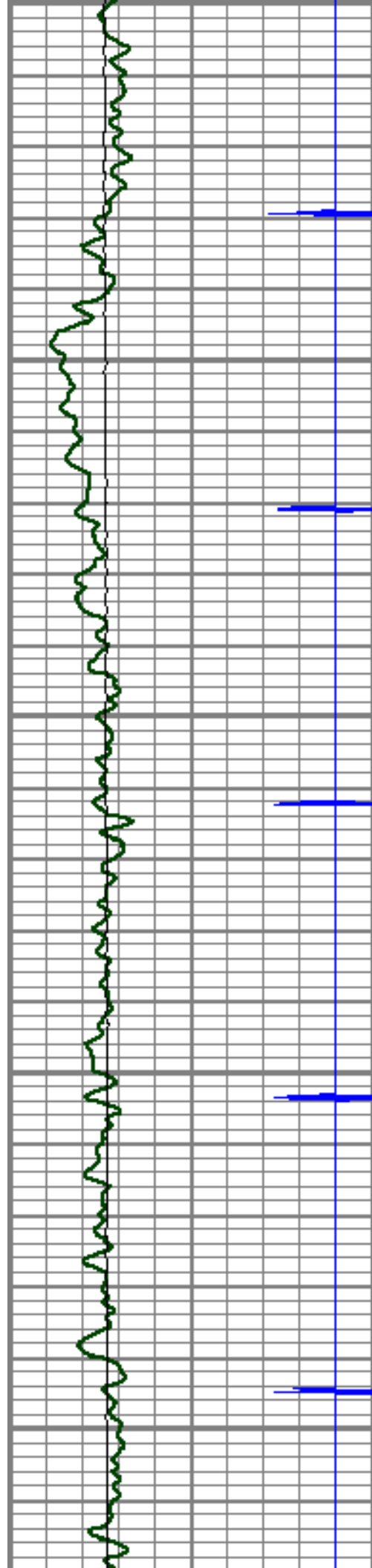
4900

4950

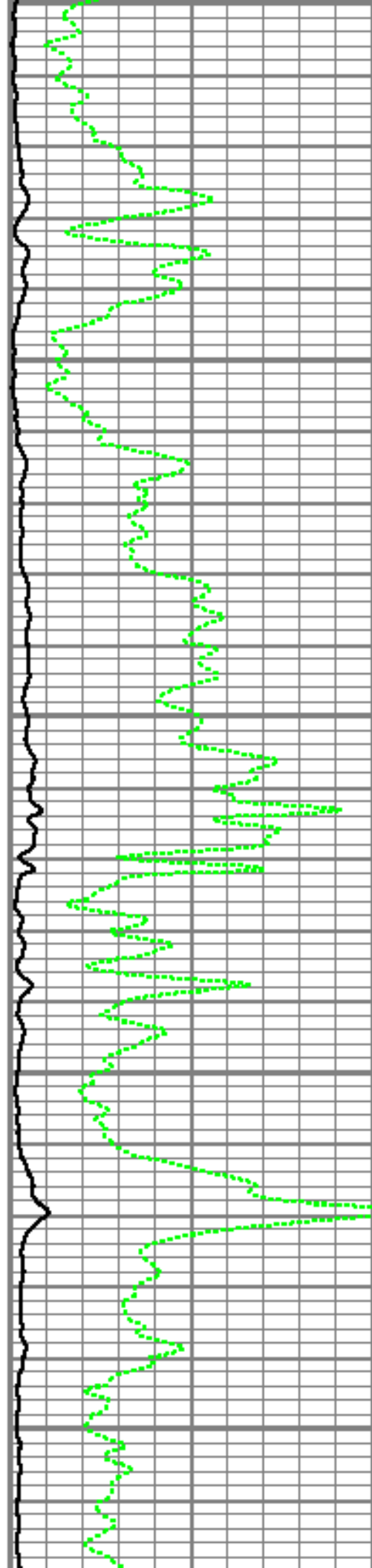
5000

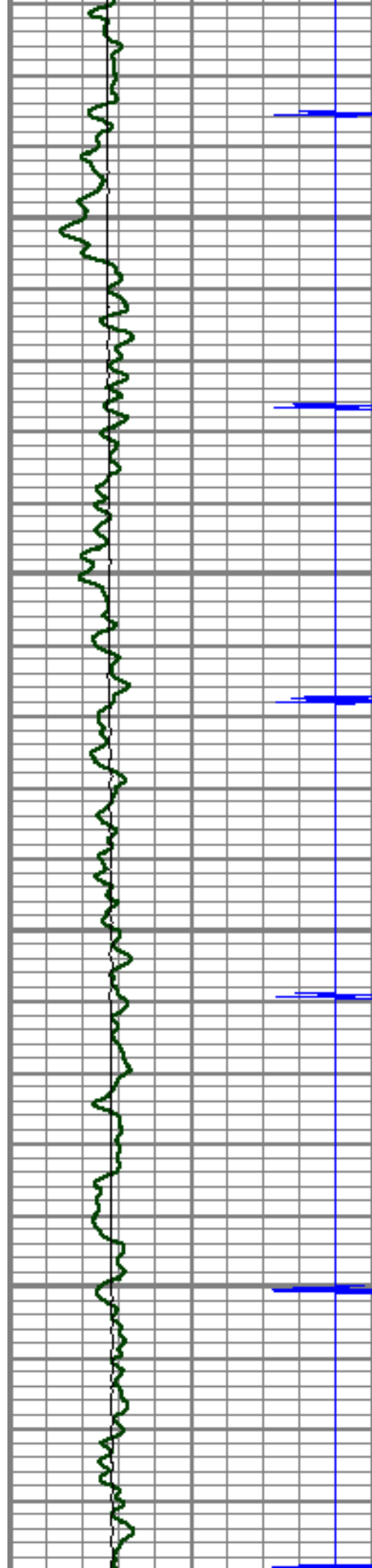






5290
5300
5350
5400
5450



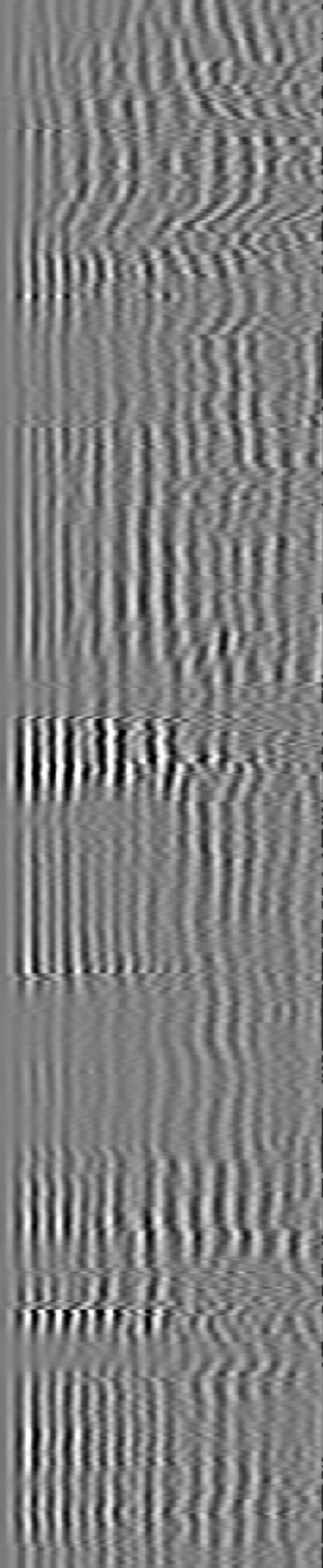
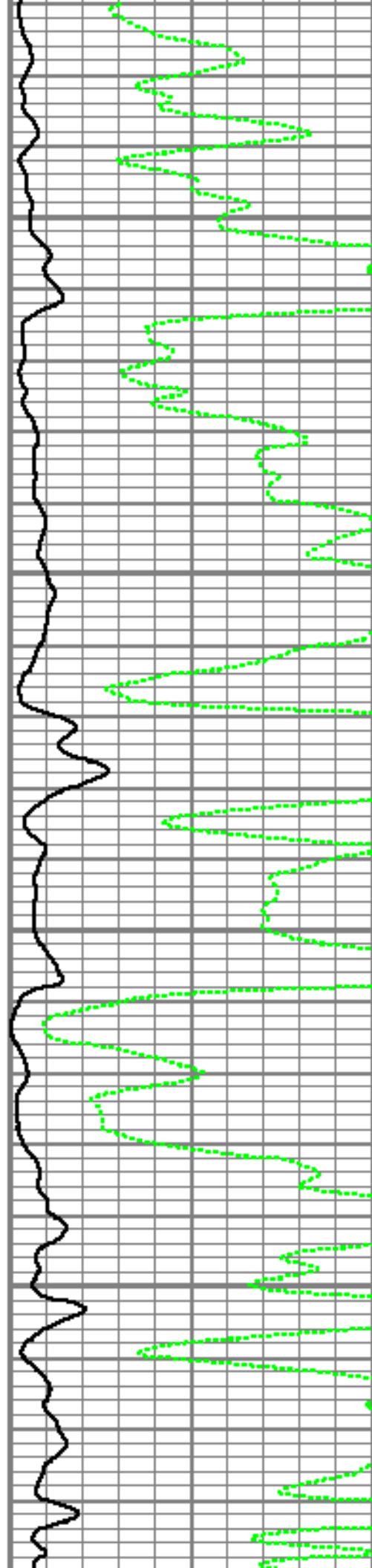


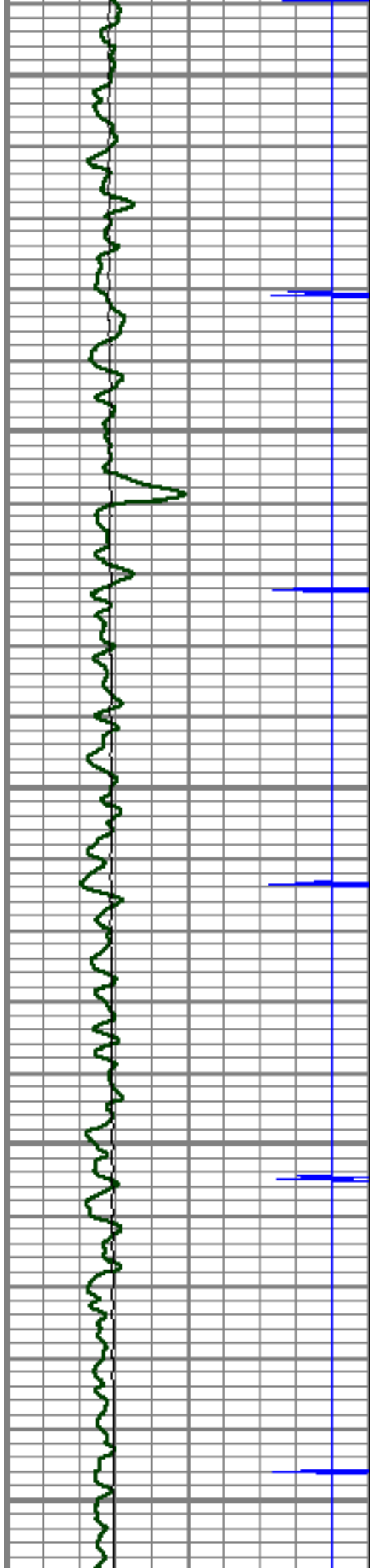
5500

5550

5600

5650





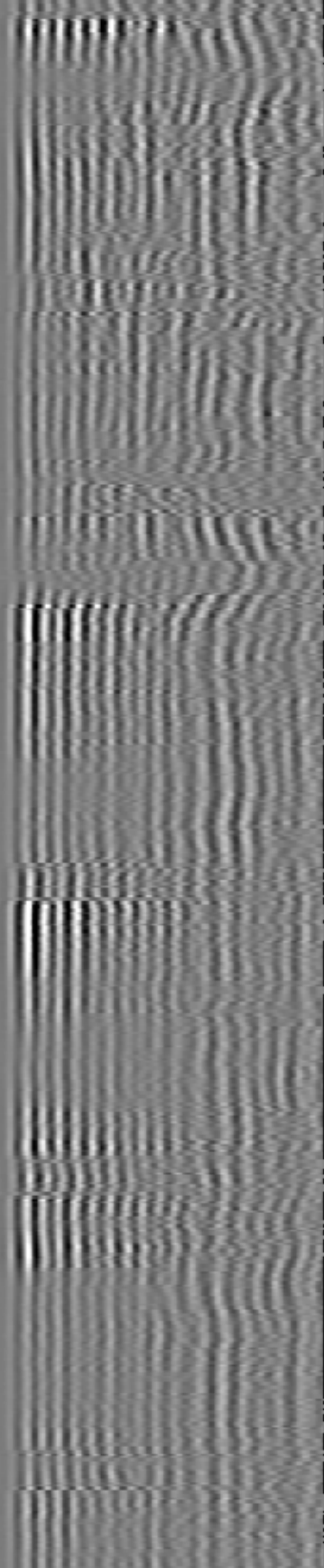
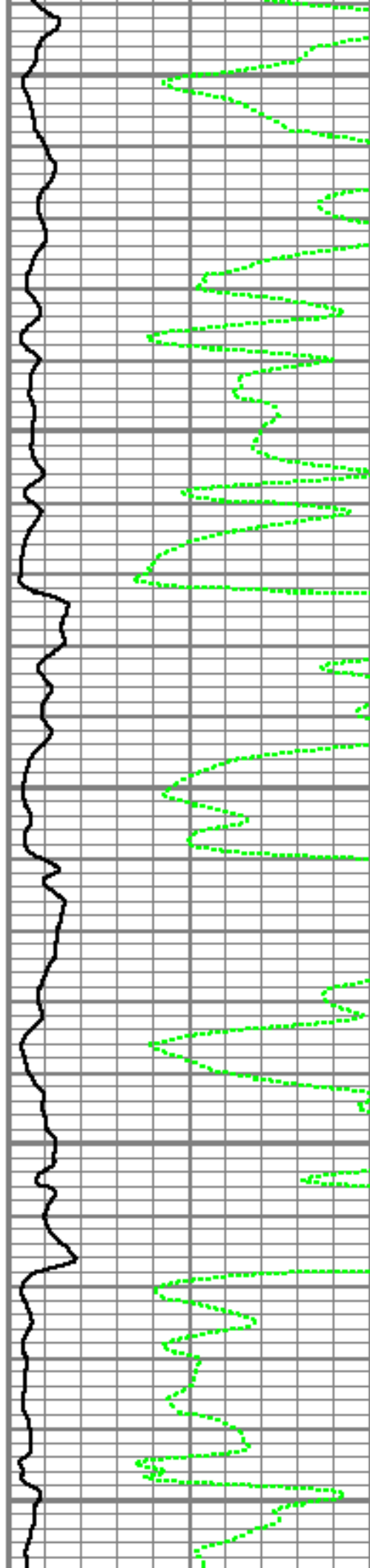
5700

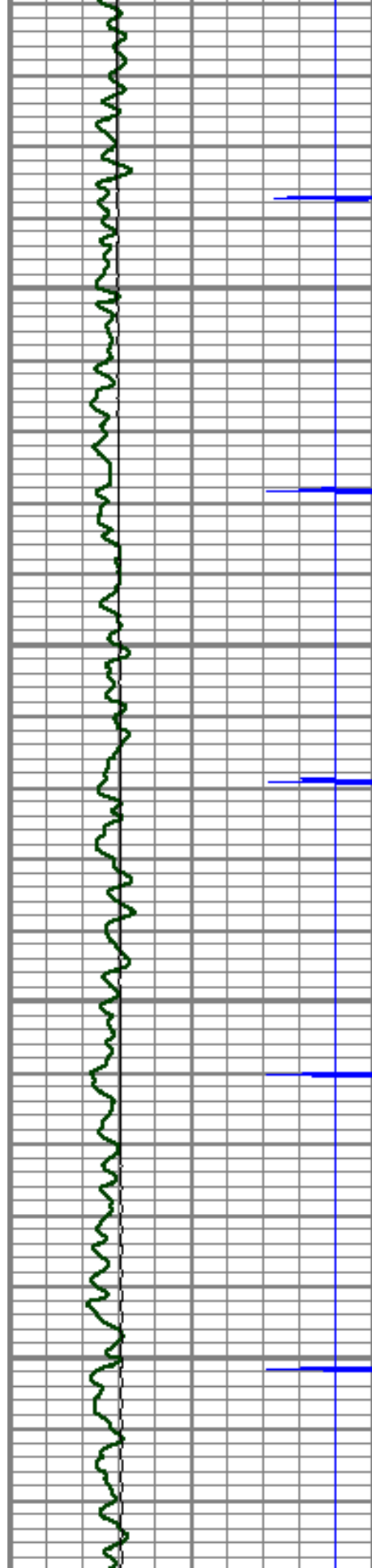
5750

5800

5850

5900



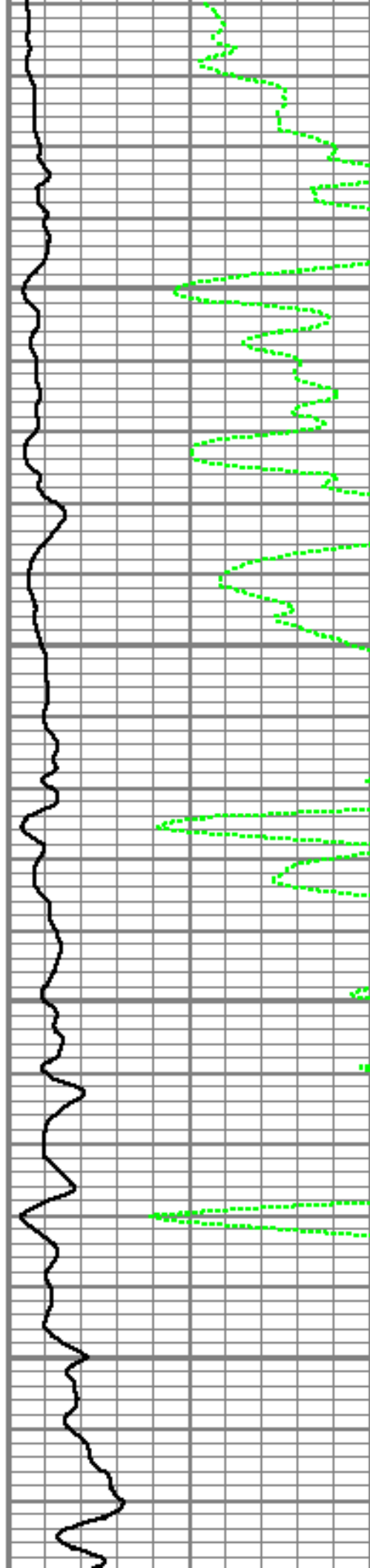


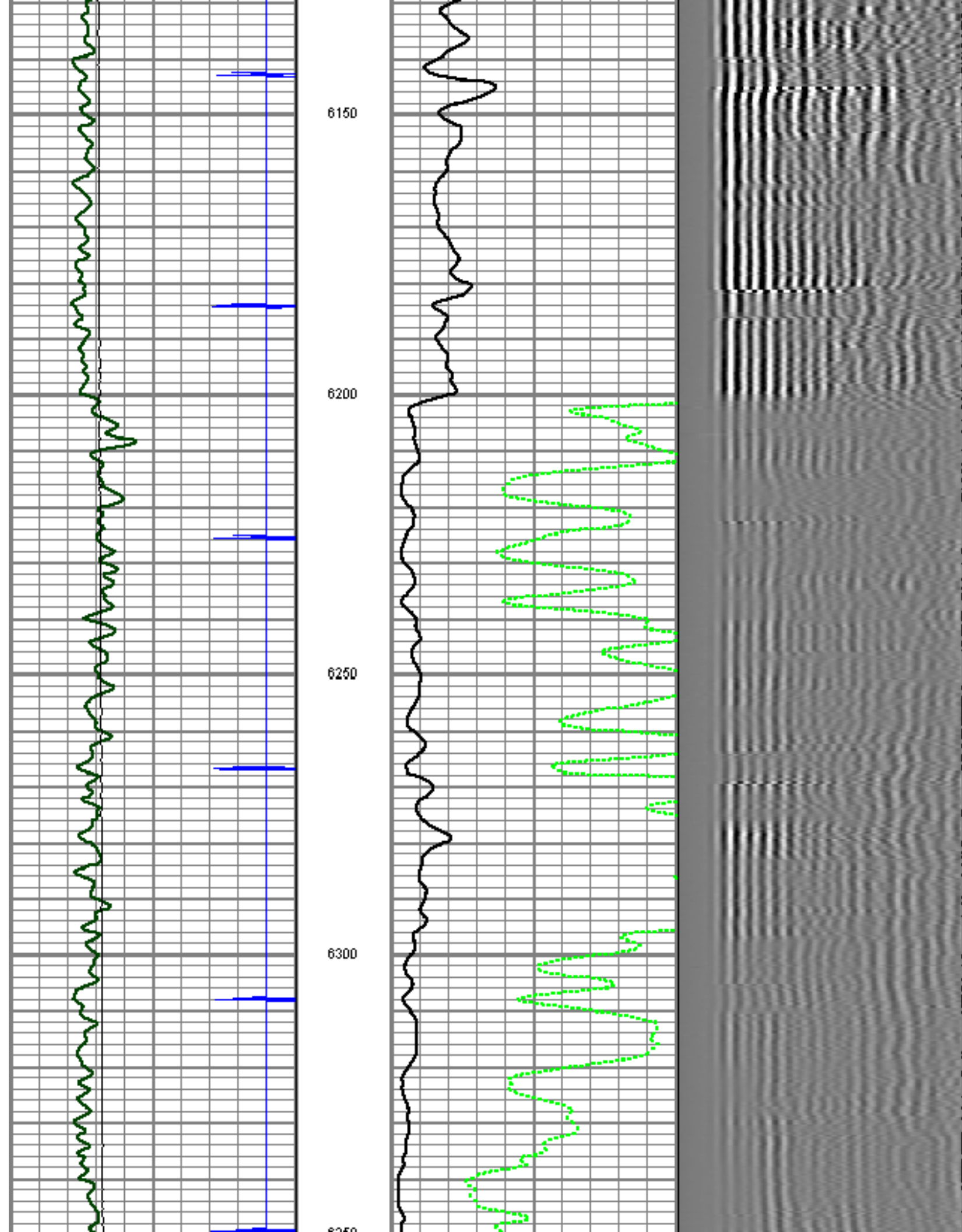
5950

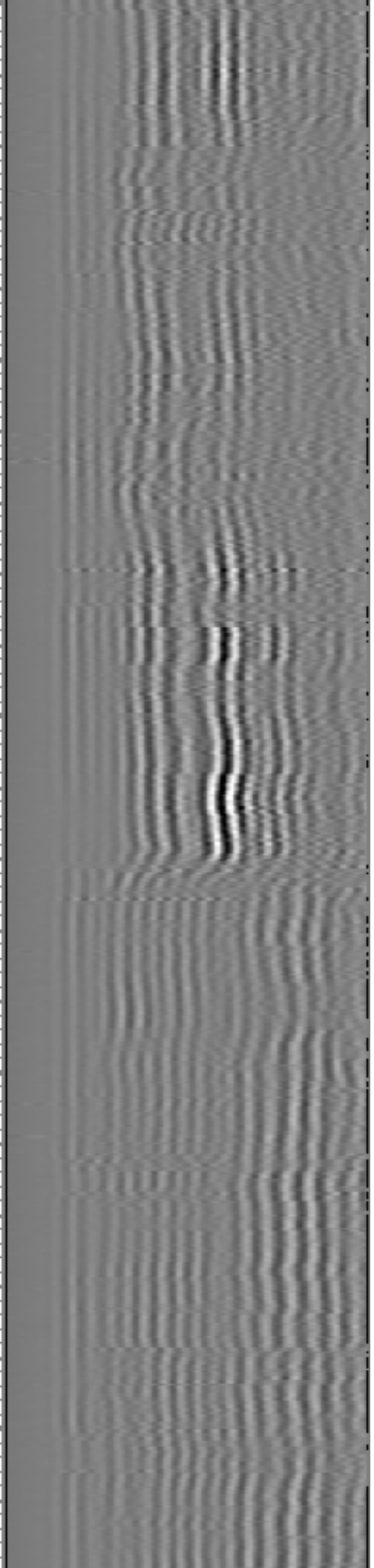
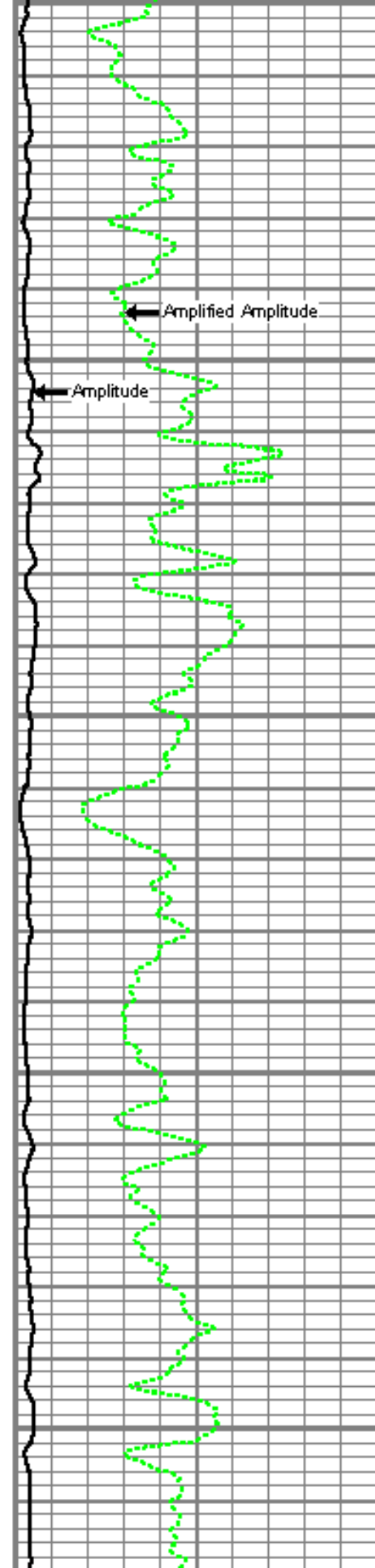
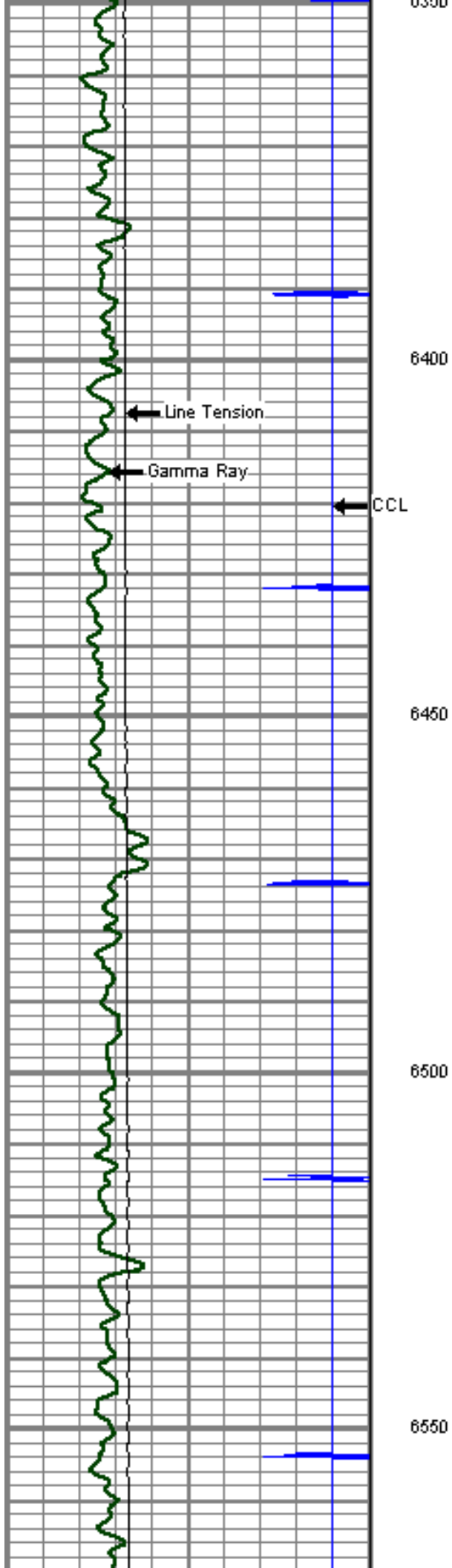
6000

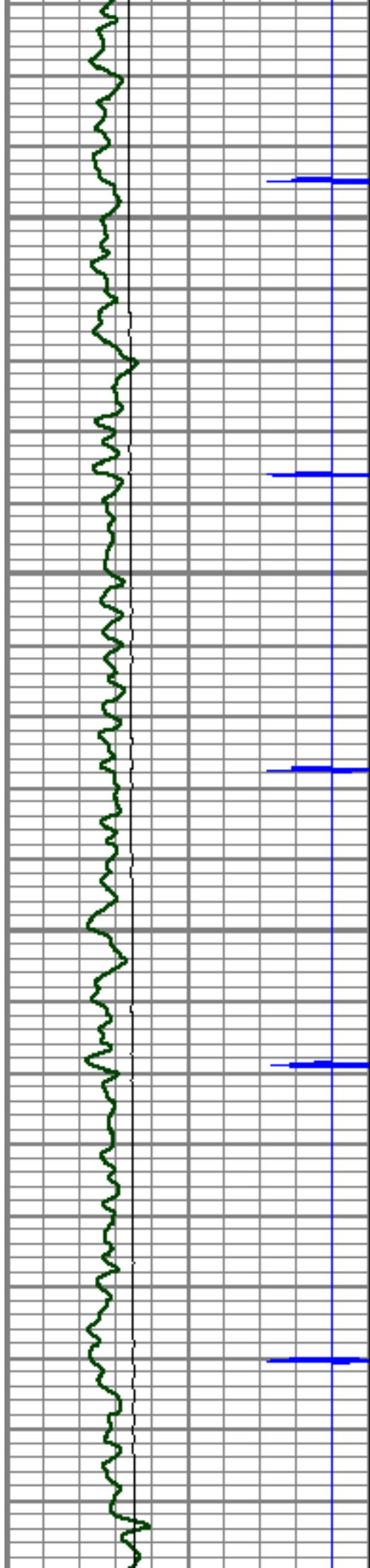
6050

6100







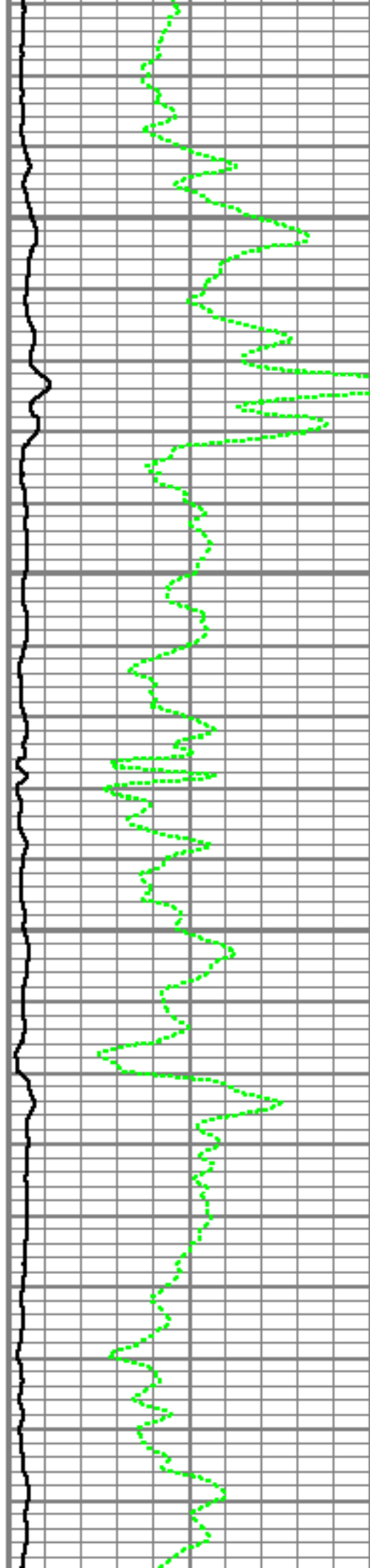


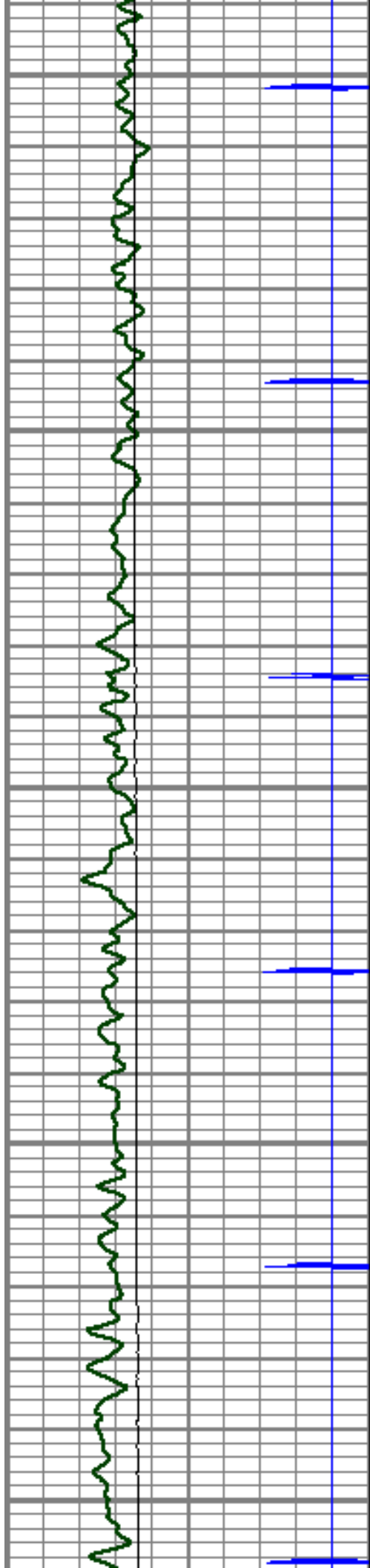
6600

6650

6700

6750





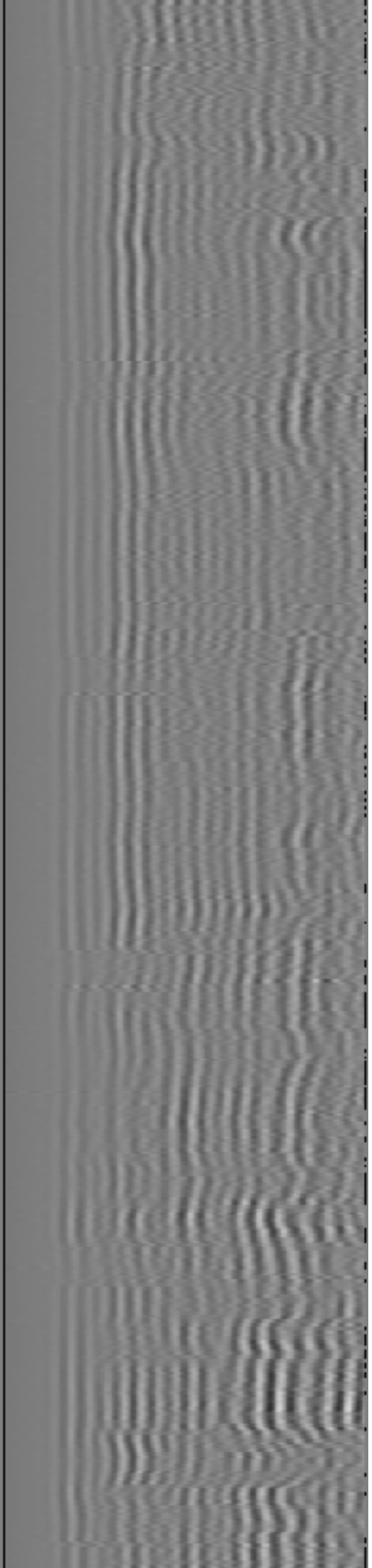
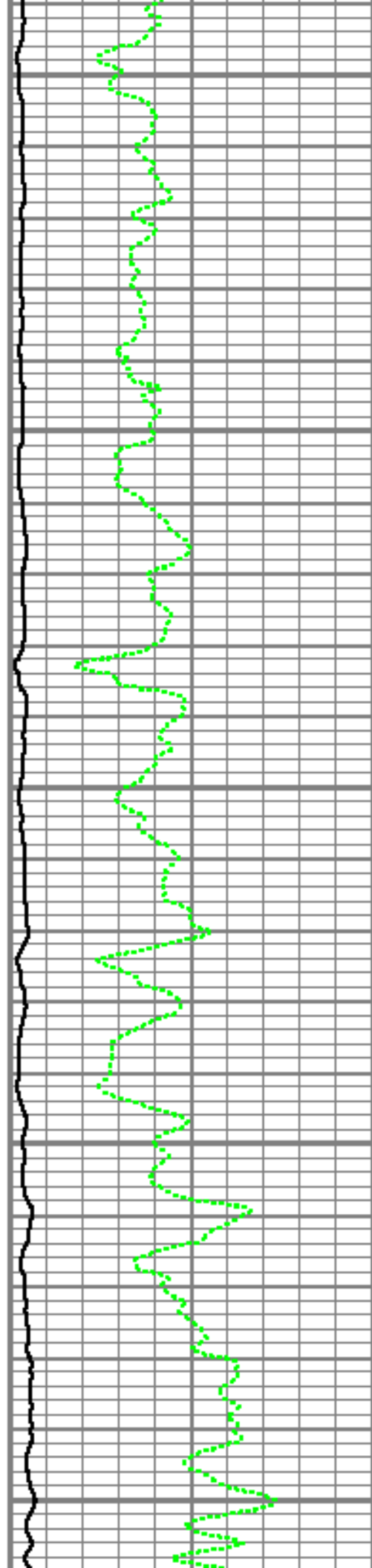
6800

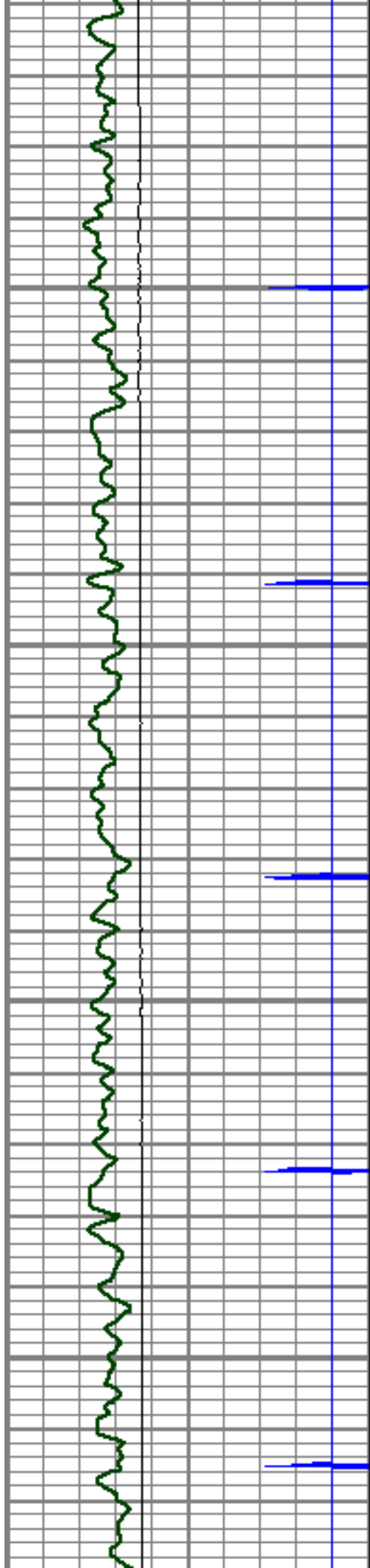
6850

6900

6950

7000



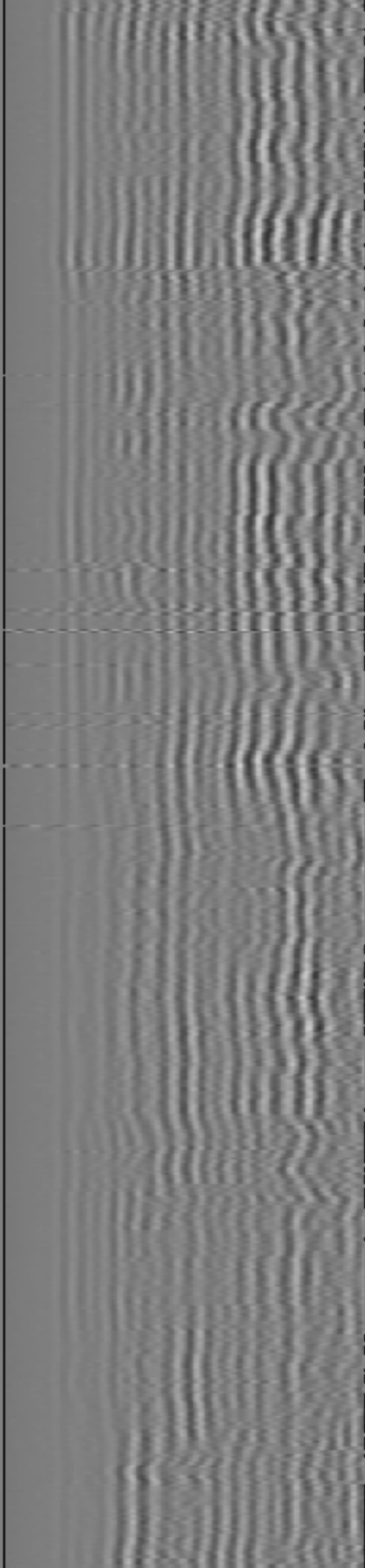
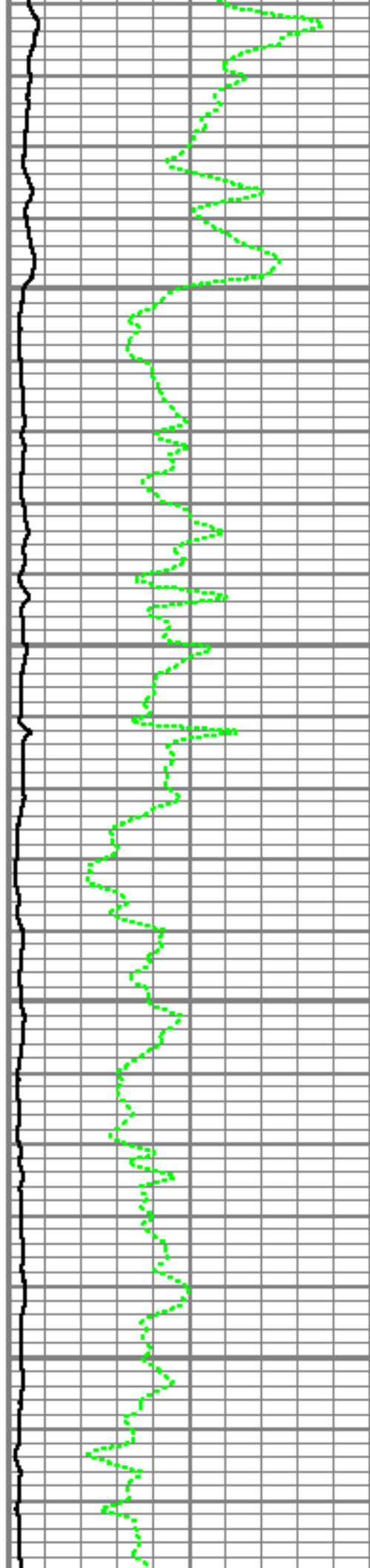


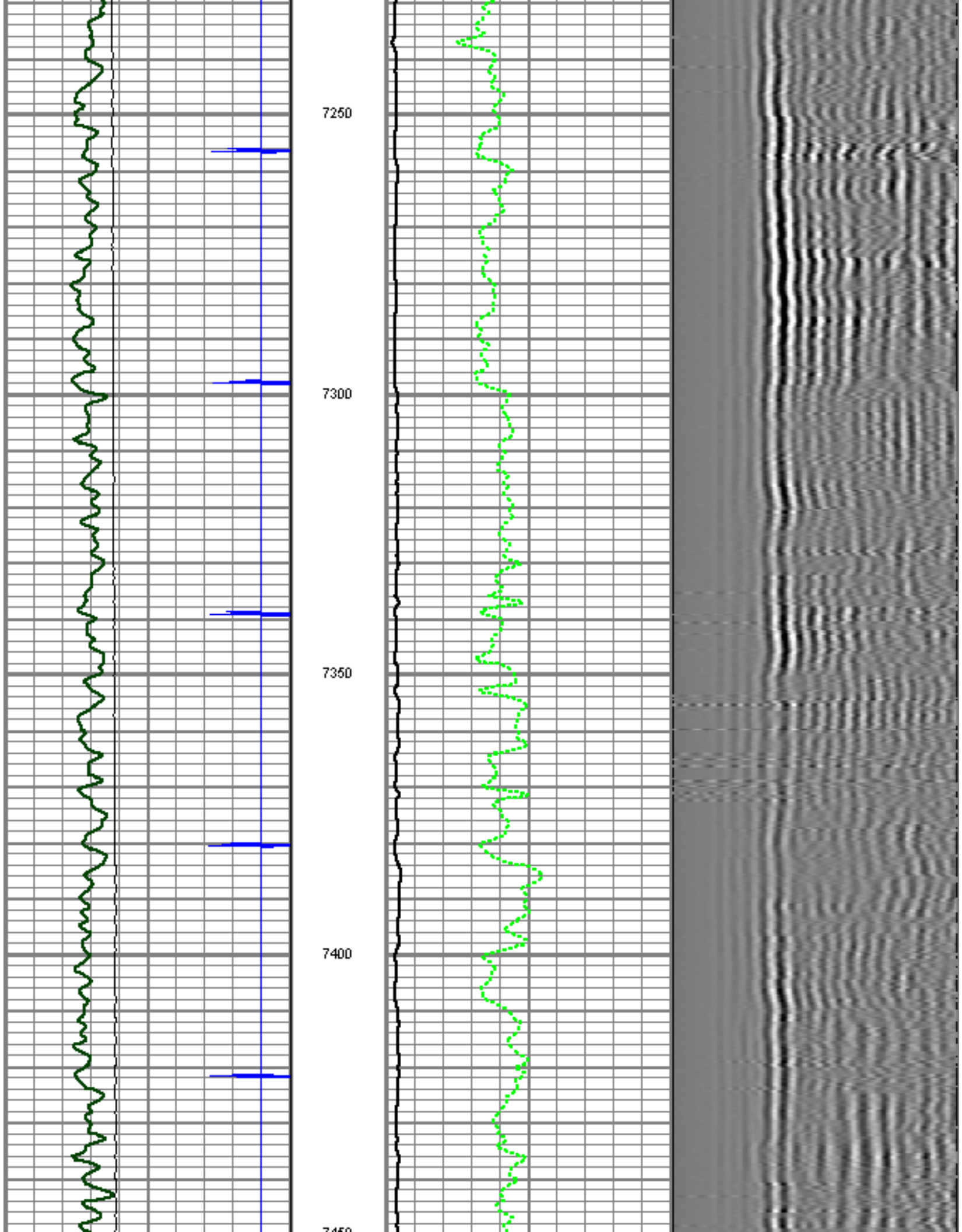
7050

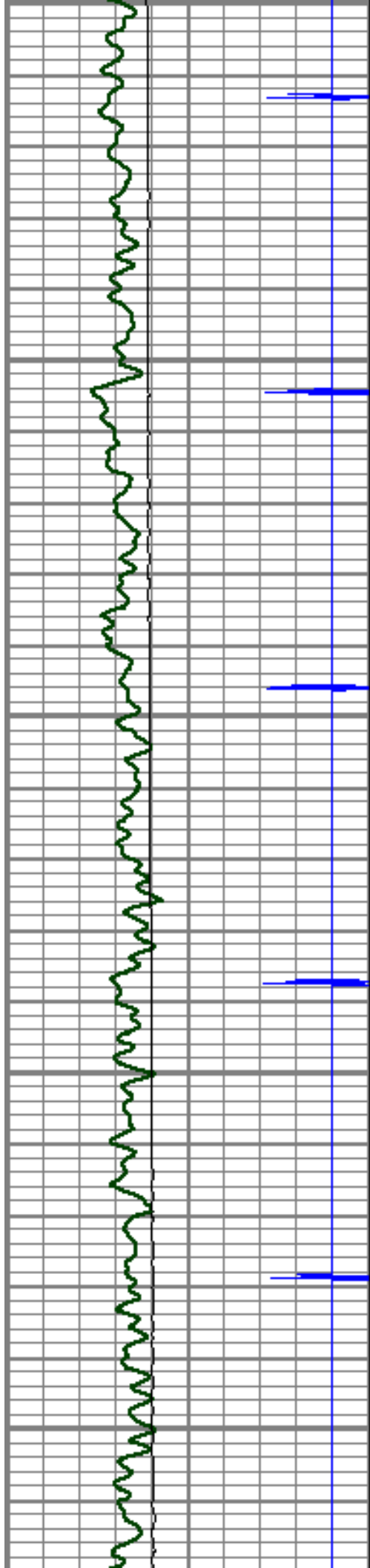
7100

7150

7200







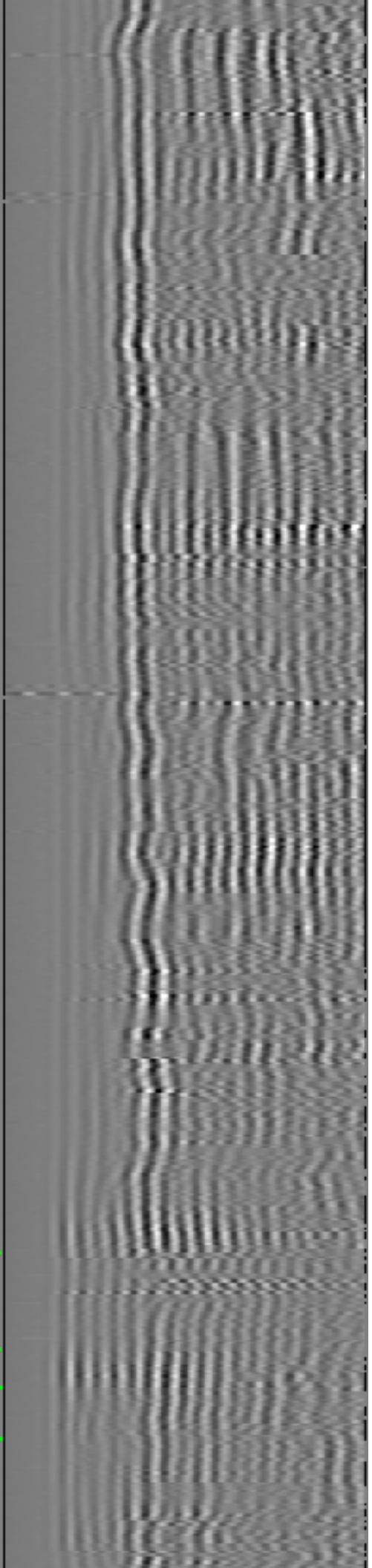
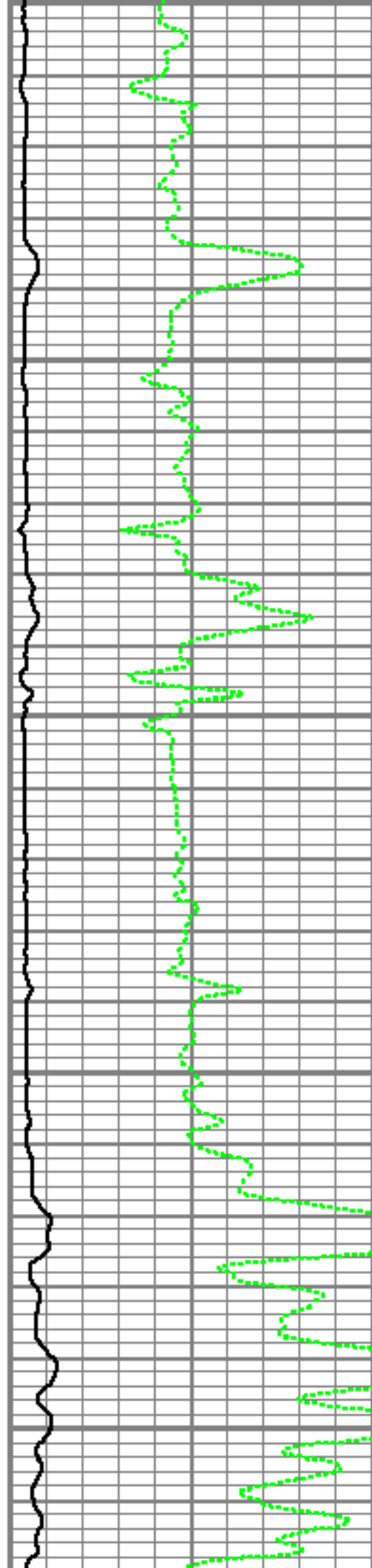
7400

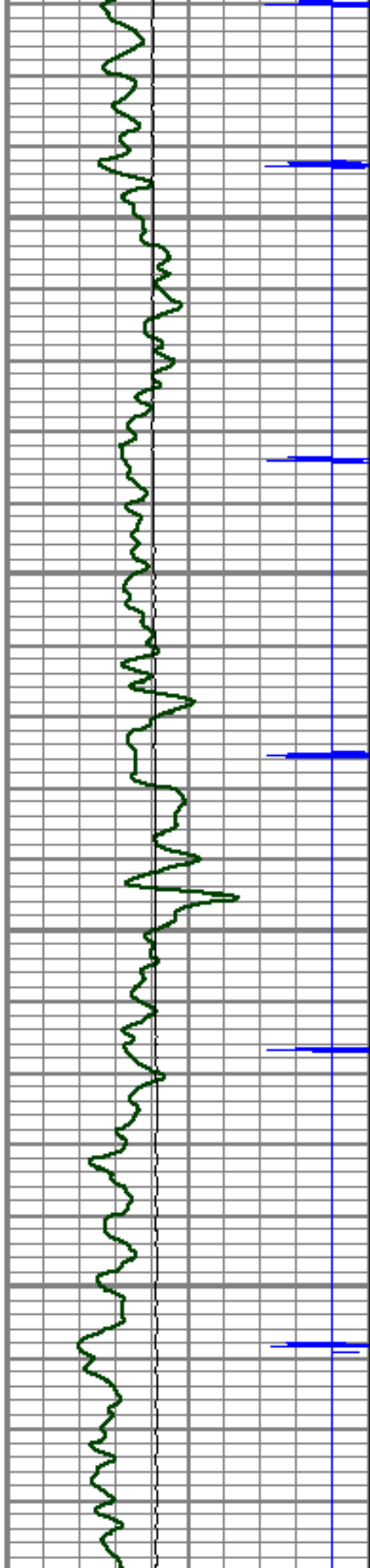
7500

7550

7600

7650





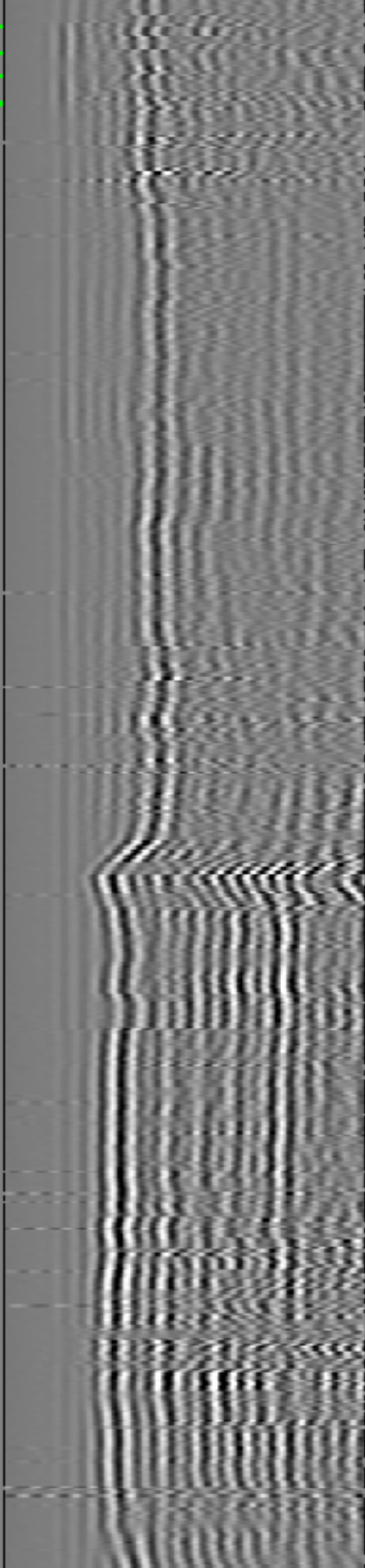
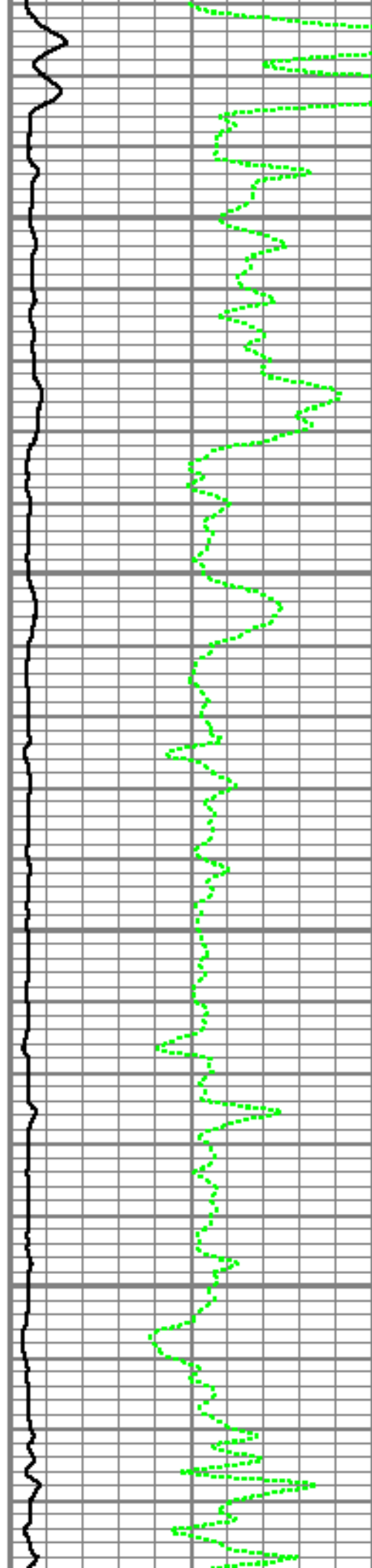
Short Joint

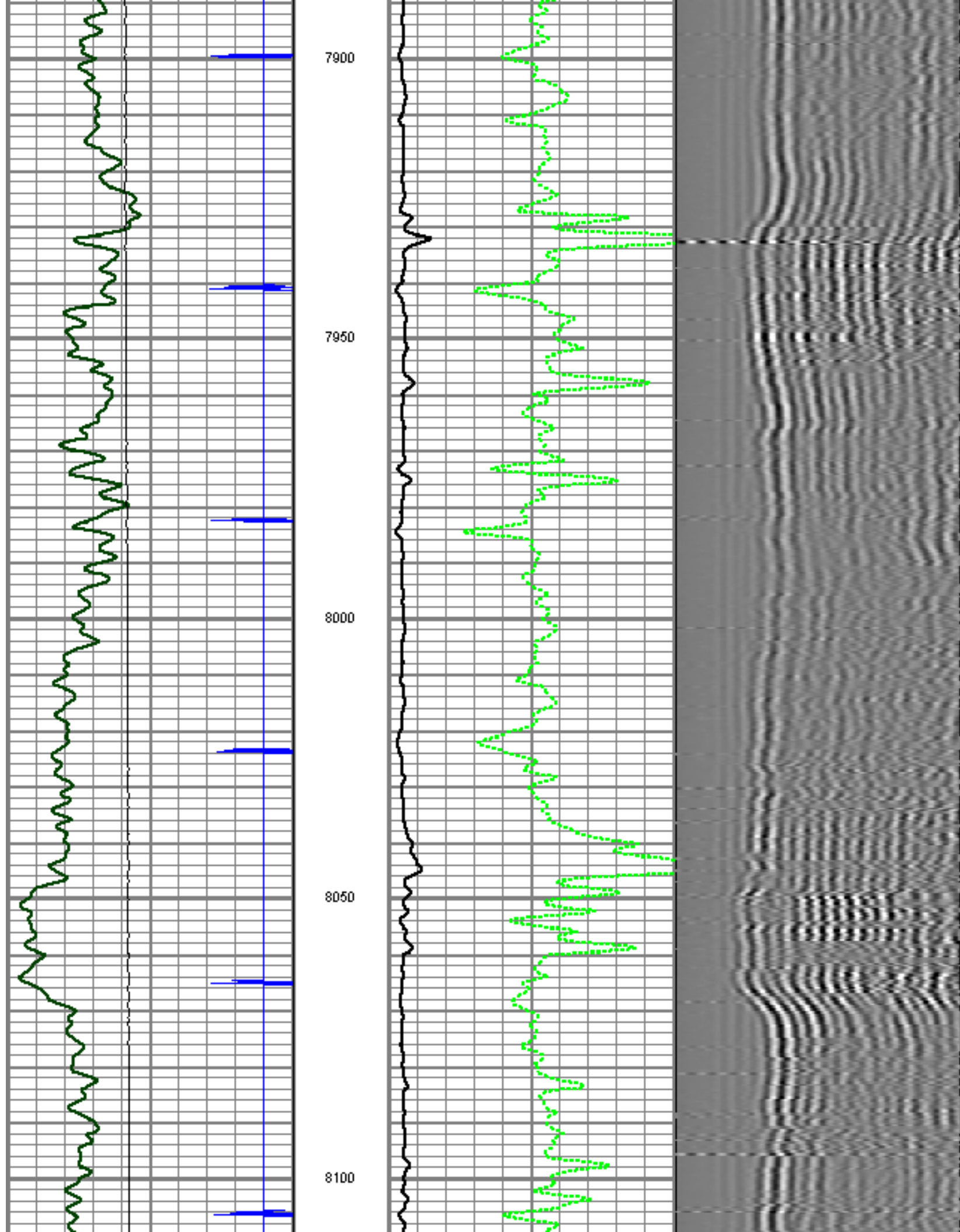
7700

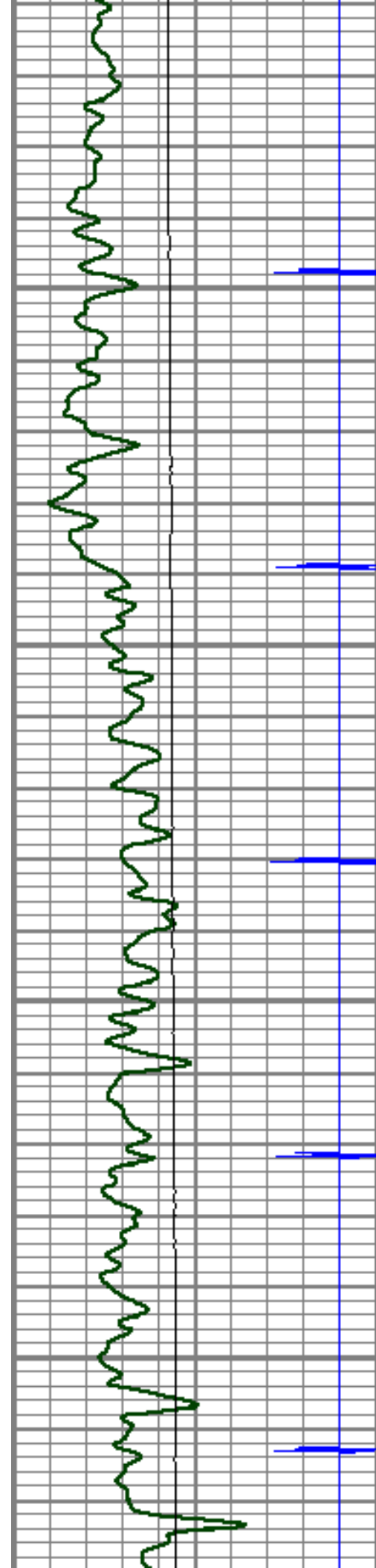
7750

7800

7850





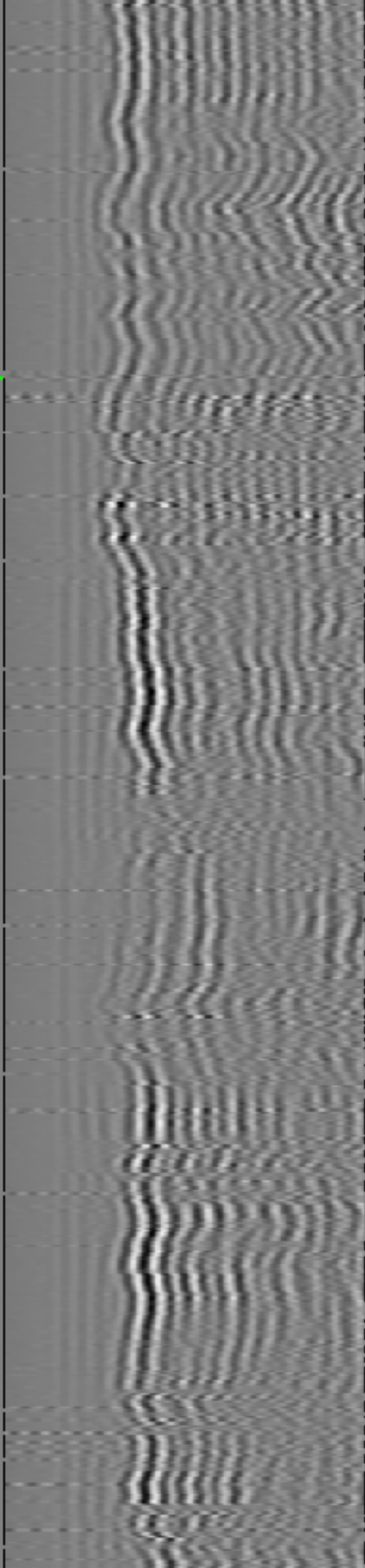
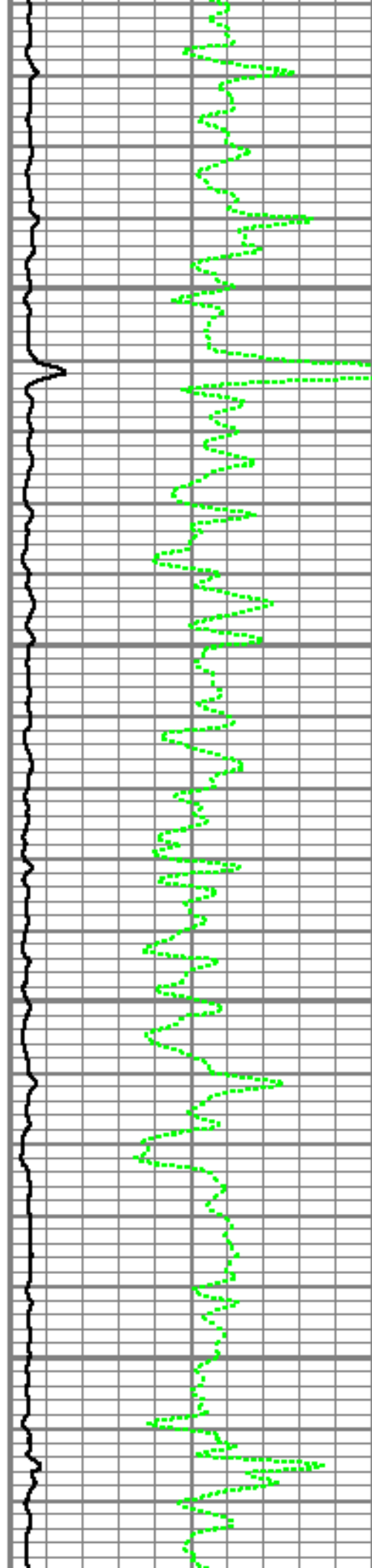


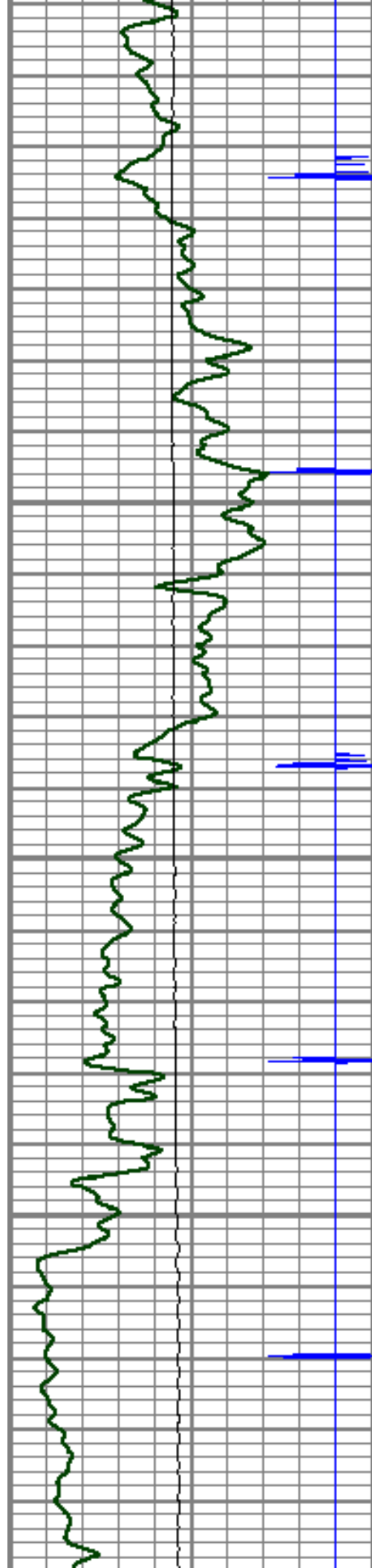
8150

8200

8250

8300





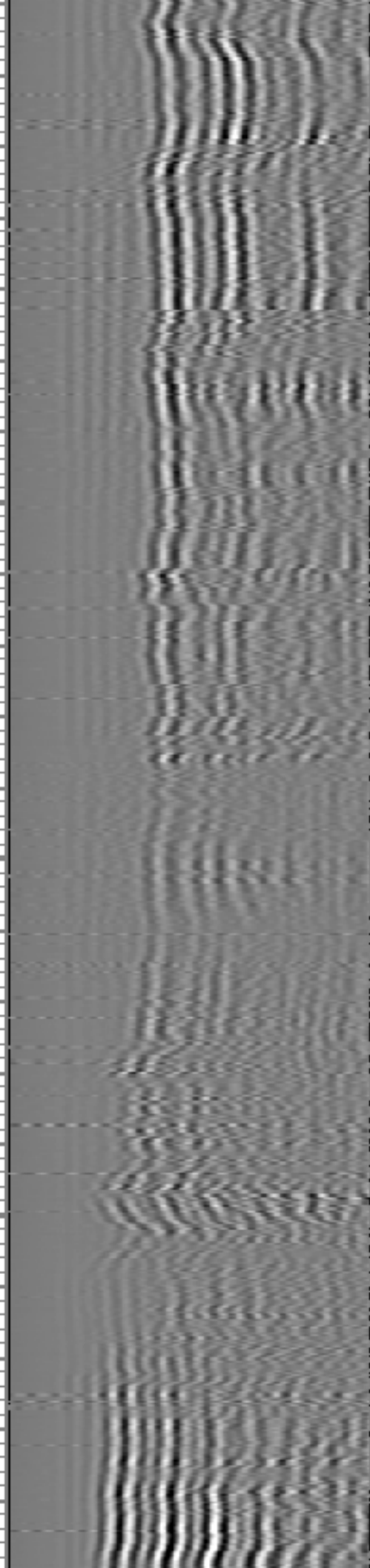
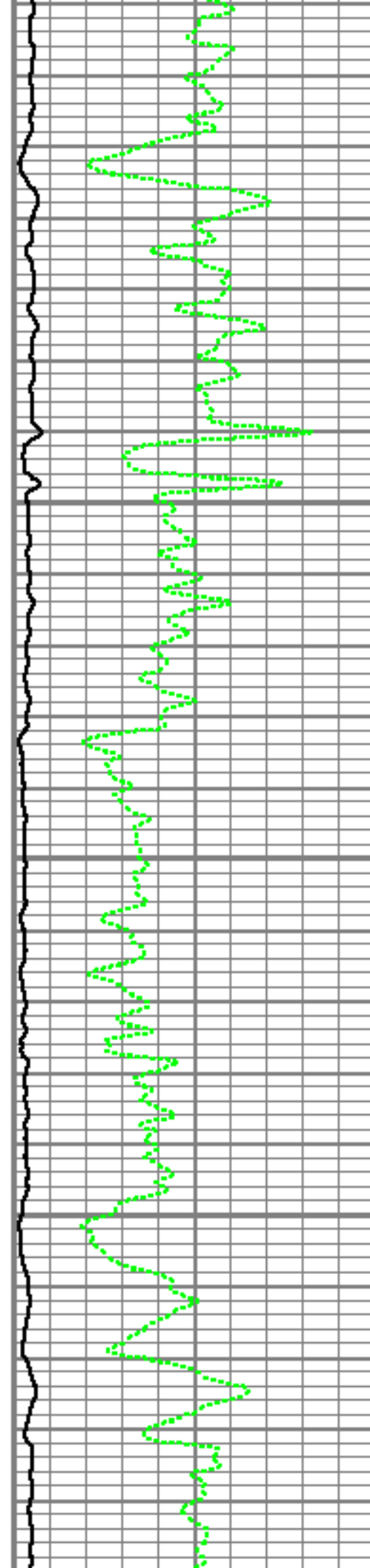
8350


8400


8450

8500

8550



GR	2.03		SONDEX	2.71	2.75	32.00
			SNDX_GR-SNDX_3_13_GR (000002) <i>Sondex Production Gamma Ray</i>	2.94	3.13	22.05
Dataset: east rinn 2.db: field/well/run1/pass4.7 Total Length: 20.75 ft Total Weight: 239.07 lb O.D.: 3.13 in						

	Company	ENCANA OIL & GAS (USA) INC.
	Well	EAST RINN 2-8-15
	Field	WATTENBURG
	County	WELD
	State	COLORADO