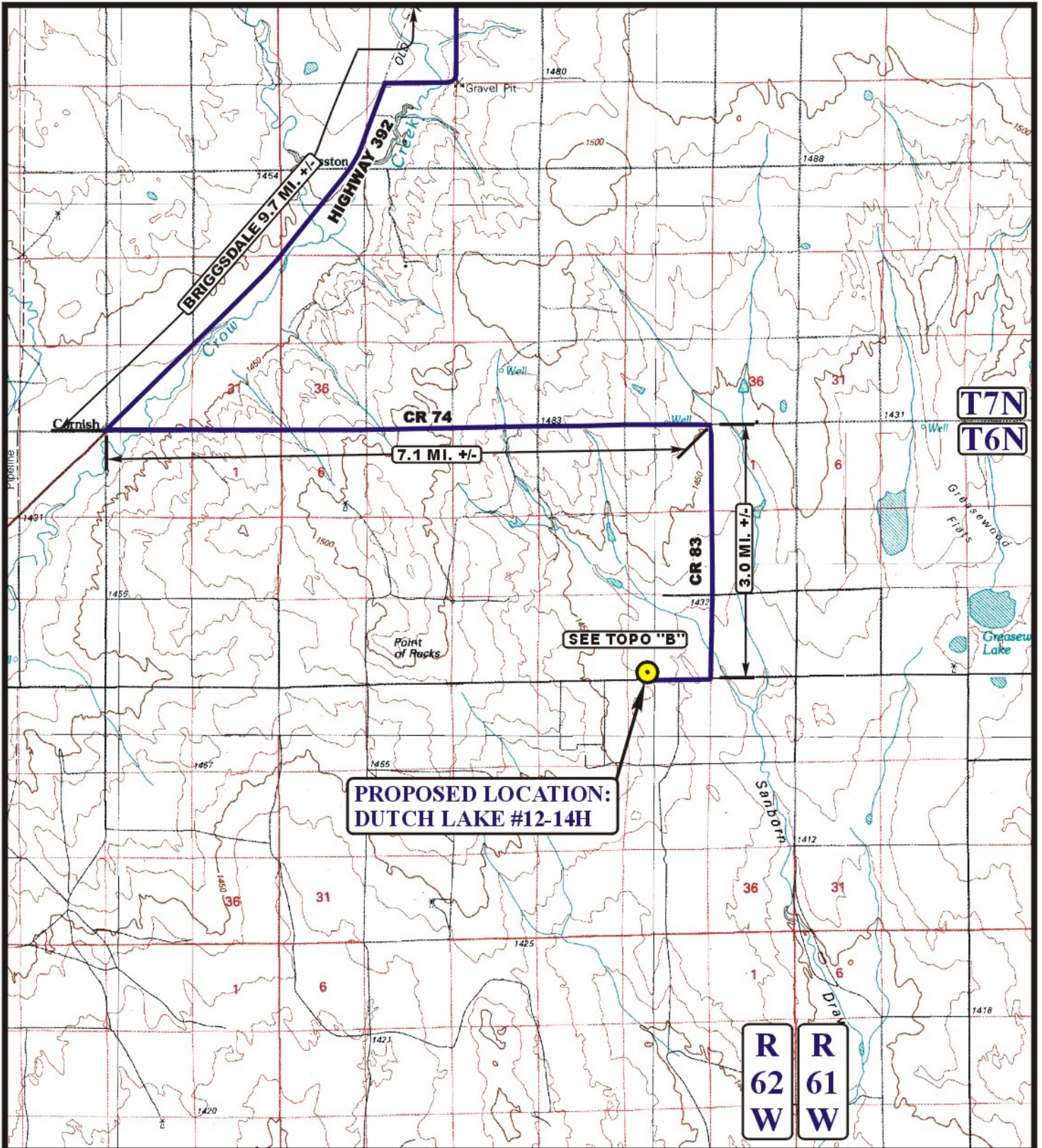


EOG RESOURCES, INC.
DUTCH LAKE #12-14H
SECTION 14, T6N, R62W, 6th P.M.

PROCEED IN A SOUTHERLY, THEN SOUTHWESTERLY DIRECTION FROM BRIGGS DALE, COLORADO ALONG HIGHWAY 392 APPROXIMATELY 9.7 MILES TO THE JUNCTION OF THIS ROAD AND COUNTY ROAD 74 TO THE EAST; TURN LEFT AND PROCEED IN AN EASTERLY DIRECTION APPROXIMATELY 7.1 MILES TO THE JUNCTION OF THIS ROAD AND COUNTY ROAD 83 TO THE SOUTH; TURN RIGHT AND PROCEED IN A SOUTHERLY DIRECTION APPROXIMATELY 3.0 MILES TO THE JUNCTION OF THIS ROAD AND COUNTY ROAD 68 TO THE WEST; TURN RIGHT AND PROCEED IN A WESTERLY DIRECTION APPROXIMATELY 0.7 MILES TO THE BEGINNING OF THE PROPOSED ACCESS TO THE NORTH; FOLLOW ROAD FLAGS IN A NORTHERLY DIRECTION APPROXIMATELY 262' TO THE PROPOSED LOCATION.

TOTAL DISTANCE FROM BRIGGS DALE, COLORADO TO THE PROPOSED WELL LOCATION IS APPROXIMATELY 20.5 MILES.



LEGEND:

● PROPOSED LOCATION



EOG RESOURCES, INC.

DUTCH LAKE #12-14H
SECTION 14, T6N, R62W, 6th P.M.
501' FSL 1200' FWL



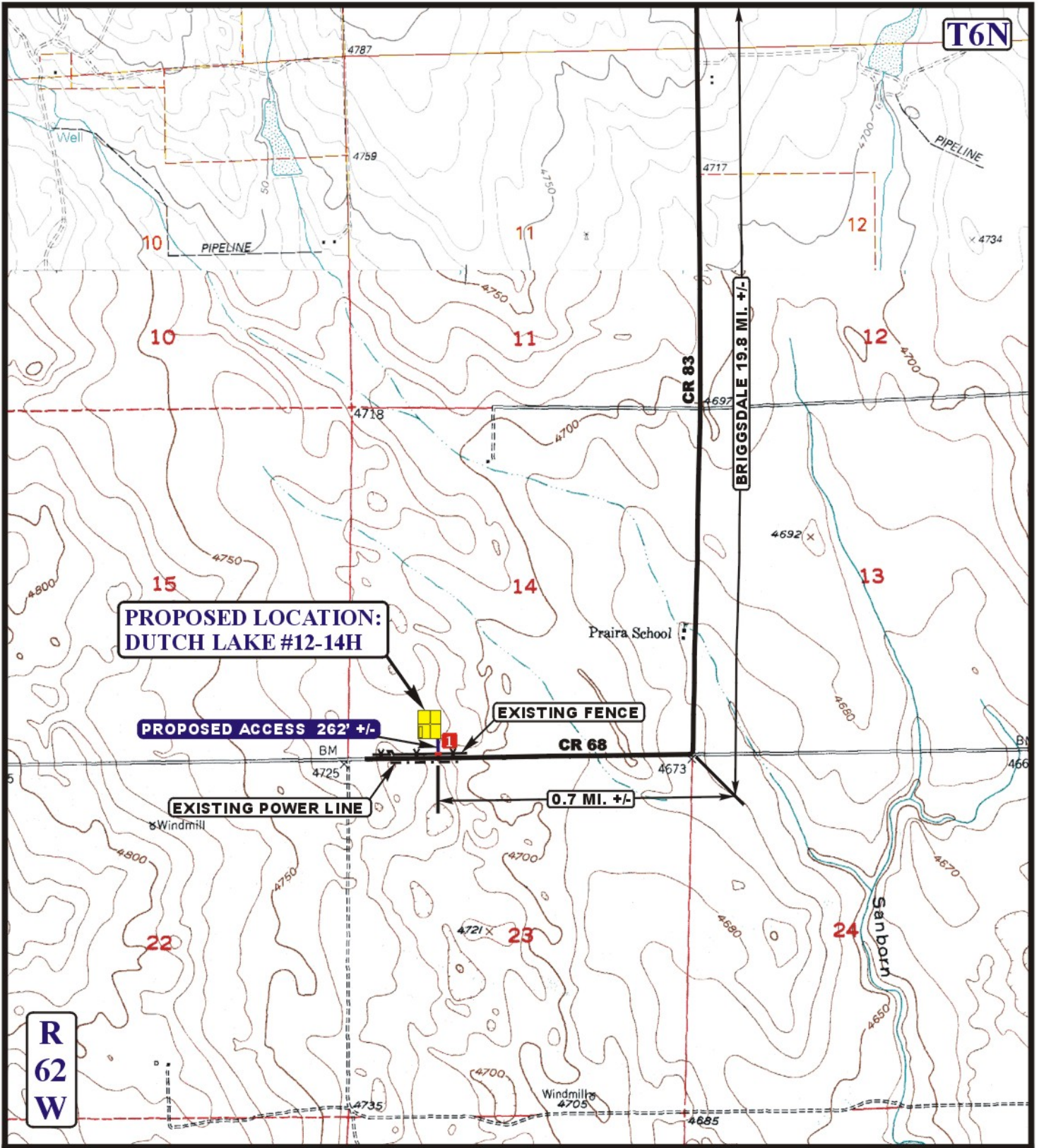
Utah Engineering & Land Surveying
 85 South 200 East Vernal, Utah 84078
 (435) 789-1017 * FAX (435) 789-1813

ACCESS ROAD
MAP

03 11 11
 MONTH DAY YEAR

SCALE: 1:100,000 DRAWN BY: C.A.G. REVISED: 00-00-00





R
62
W

LEGEND:

- EXISTING ROAD
- PROPOSED ACCESS ROAD
- EXISTING POWER LINE
- EXISTING FENCE
- INSTALL CATTLE GUARD



Utah Engineering & Land Surveying
85 South 200 East Vernal, Utah 84078
(435) 789-1017 * FAX (435) 789-1813



EOG RESOURCES, INC.

DUTCH LAKE #12-14H
SECTION 14, T6N, R62W, 6th P.M.
501' FSL 1200' FWL

ACCESS ROAD MAP	03	11	11	B TOPO
	MONTH	DAY	YEAR	
SCALE: 1" = 2000'	DRAWN BY: C.A.G.		REVISED: 00-00-00	