

**REFERENCE AREA  
DJ BASIN-NIOBRARA**

**Bellmore 9-66-15-5H**

Photo Key: 1800



Reference Areas

**Date:** 5/12/2011

**Taken By:** Brooke Davis

**Direction:** South

Photo Key: 1801



Reference Areas

**Date:** 5/12/2011

**Taken By:** Brooke Davis

**Direction:** North

**REFERENCE AREA  
DJ BASIN-NIOBRARA**

**Bellmore 9-66-15-5H**

Photo Key: 1803



Reference Areas

**Date:** 5/12/2011

**Taken By:** Brooke Davis

**Direction:** East

Photo Key: 1802

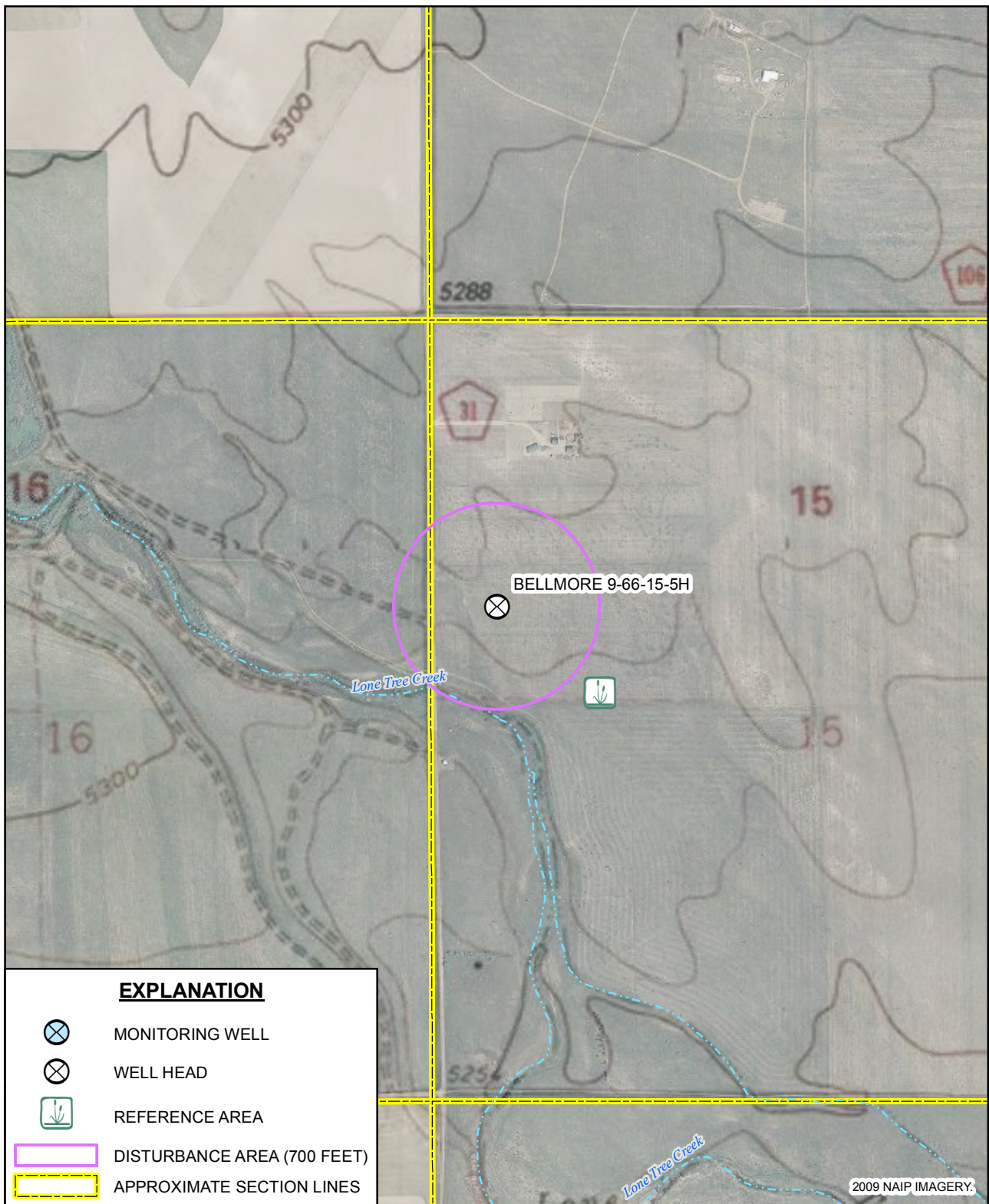


Reference Areas






**Date:** 5/12/2011

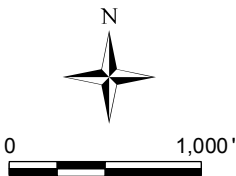
**Taken By:** Brooke Davis

**Direction:** West



**EXPLANATION**

-  MONITORING WELL
-  WELL HEAD
-  REFERENCE AREA
-  DISTURBANCE AREA (700 FEET)
-  APPROXIMATE SECTION LINES




1252 Commerce Drive  
Laramie, WY 82070  
www.trihydro.com  
(P) 307/745.7474 (F) 307/745.7729

**FIGURE 1**

**BELLMORE 9-66-15-5H  
REFERENCE AREA**

**DJ BASIN - NIOBRARA  
ANADARKO E&P COMPANY, LP**