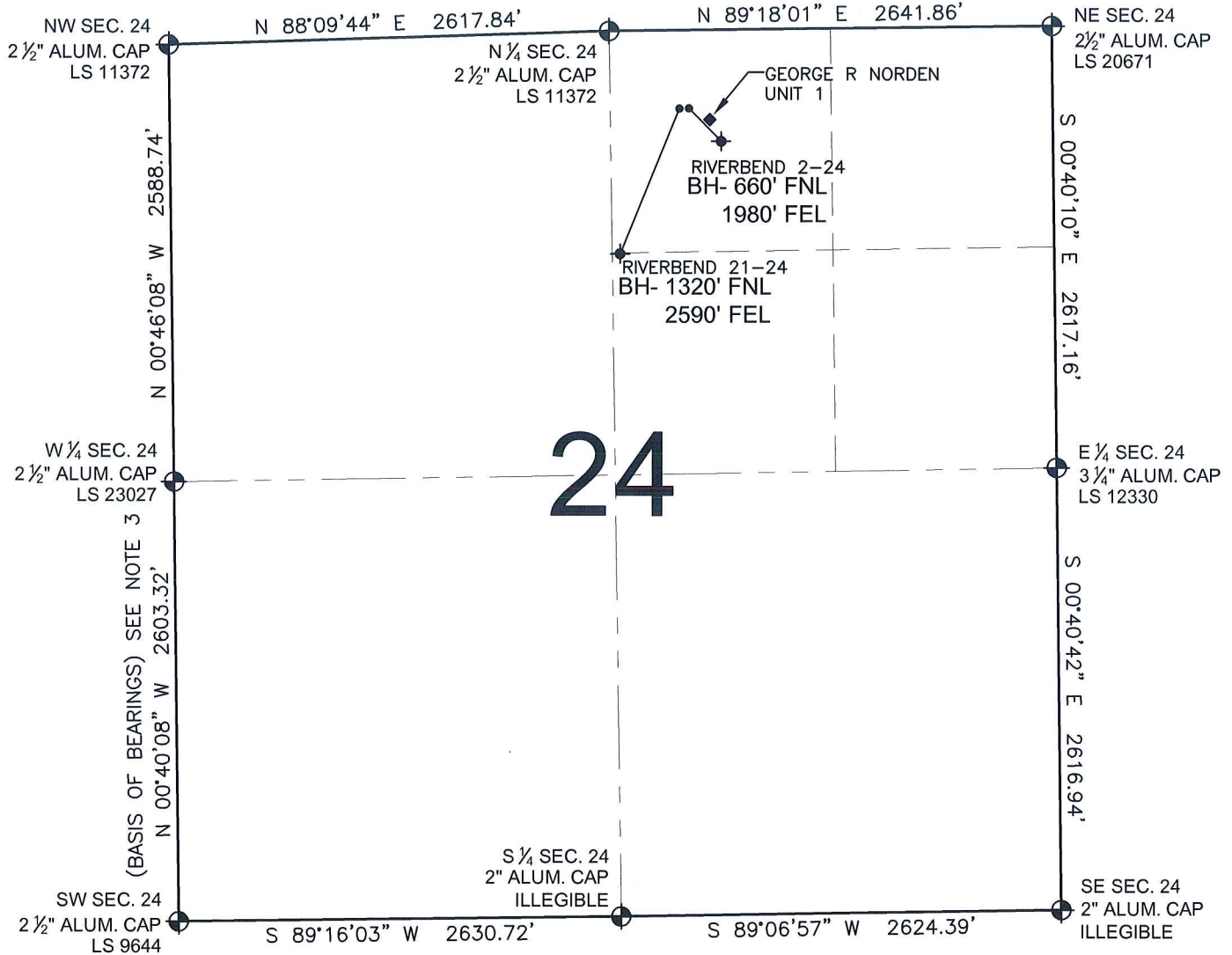


# PAD DRAWING - RIVERBEND 2 PAD

SECTION 24, TOWNSHIP 1 NORTH, RANGE 67 WEST, 6TH P.M.



## LEGEND

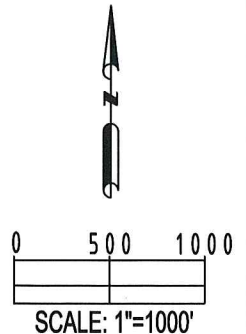
- = EXISTING MONUMENT   
 = BOTTOM HOLE   
 BH= BOTTOM HOLE  
 = PROPOSED WELL   
 = EXISTING WELL

## NOTES:

- THIS SURVEY WAS DONE BY GPS METHODS AND CONFORMS TO THE MINIMUM STANDARDS SET BY THE C.O.G.C.C., RULE NO. 215
- ELEVATIONS SHOWN AT THE WELL HEAD, AS WELL AS HORIZONTAL CONTROL, ARE BASED ON GPS-RTK VALUES DERIVED FROM DOING 2-HOUR STATIC GPS SESSIONS AND REDUCTIONS USING O.P.U.S. SOLUTIONS.  
VERTICAL = NAVD88; HORIZONTAL = NAD83/92
- THE BEARINGS SHOWN HEREON ARE BASED ON GPS OBSERVATIONS BETWEEN THE MONUMENTS SHOWN HEREON AS FOUND ON THE FIELD DATE BELOW.
- DISTANCES SHOWN ARE AT GROUND LEVEL, AS MEASURED IN THE FIELD, WITH TIES TO WELLS MEASURED AT A PERPENDICULAR TO SECTION LINES.

## NOTES:

- RIVERBEND 21-24 TO BE AT 463' FNL, 2200' FEL.  
 BOTTOM HOLE AT 1320' FNL & 2590' FEL.  
 RIVERBEND 2-24 TO BE AT 463' FNL, 2170' FEL.  
 BOTTOM HOLE AT 660' FNL & 1980' FEL.  
 GEORGE R NORDEN UNIT 1 IS 511' FNL, 2120' FEL.



## REVISIONS

INITIAL	DATE

PREPARED BY:



KERR-MCGEE OIL & GAS ONSHORE LP

FIELD DATE:  
04-23-10

DRAWING DATE:  
04-26-10

BY:  
SMF

PAD NAME:  
RIVERBEND 2 PAD

SURFACE LOCATION:

WELD COUNTY, COLORADO  
NW 1/4 NE 1/4, SEC. 24, T1N, R67W