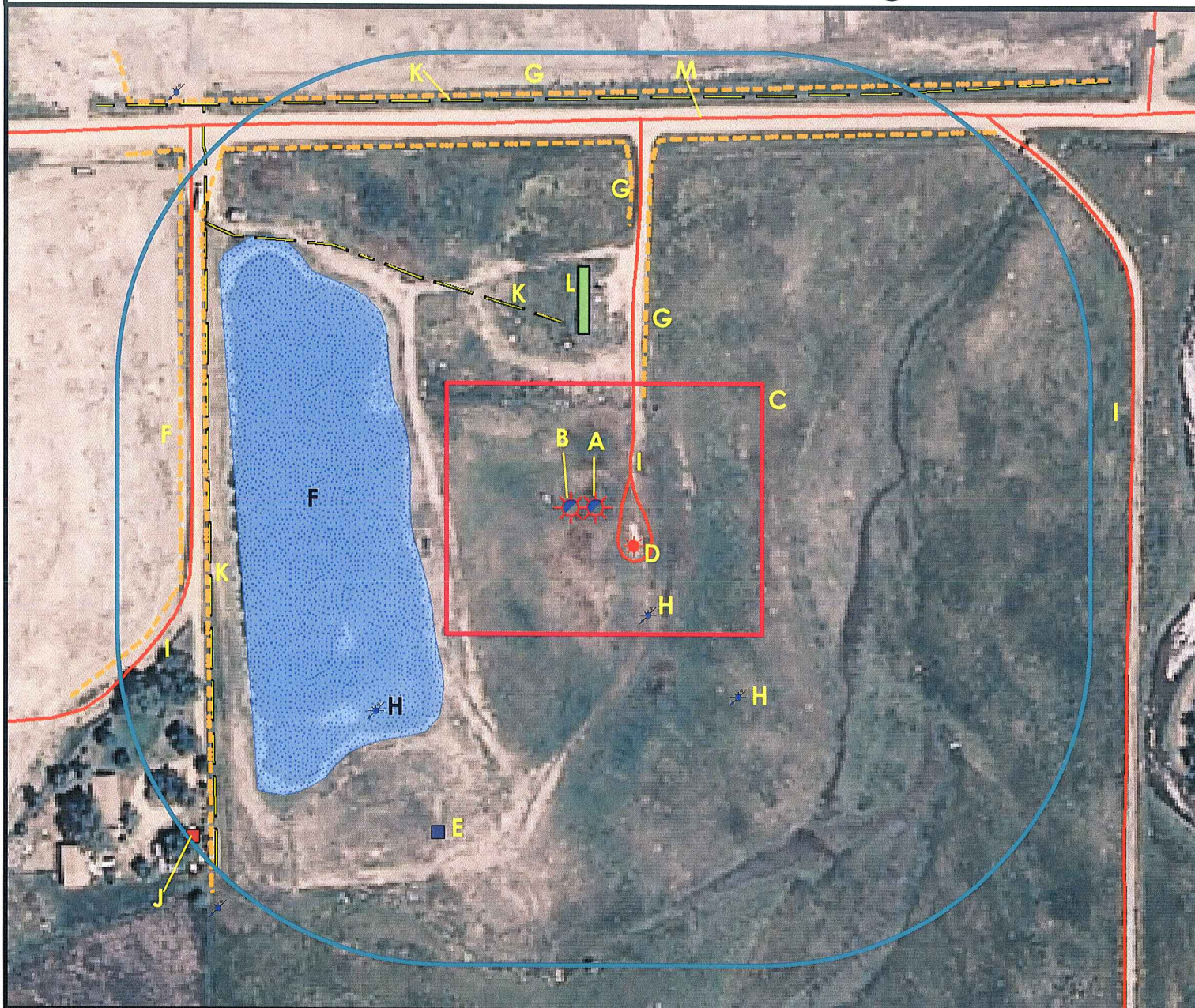
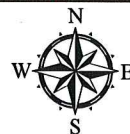


Location Drawing



- A. Proposed Well RIVERBEND 2-24.
B. Proposed Well RIVERBEND 21-24.
C. Operational Disturbance Area.
D. Existing Well NORDEN GR UNIT 1 is 69' SE.
E. The Existing Oil and Gas Valve is 437' SW.
F. The Pond is 227' W.
G. The Fences are 149' NE, 354' NE, 500' N, and 515' W.
- H. The Weld County Water Wells are (#250143) 144' SE, (#41775) 280' SE, and (#2005231) is 367' SW.
I. The Access Roads are 31'E, 497' W, and 647' E.
J. The Propane Tank is 631' SW.
K. The Overhead Power Lines are 246' NW, 470' W, and 496' N
L. The Outbuilding is 209' N.
- M. County Road 8 is 466' N.
- 0 100 200



Age Group	Number of People (Millions)
18-24	180
25-34	160
35-44	140
45-54	120
55-64	100
65-74	80
75-84	60
85+	20

Legend

- | | | | |
|---|----------------------|---|---------------------|
|  | Proposed Well |  | Building/Residence |
|  | Existing Well |  | Oil & Gas Equipment |
|  | Plugged Well |  | Water Body |
|  | Water Well |  | Utility Box |
|  | CattleGuard/Gate |  | Railroad |
|  | Propane Tank |  | Fence |
|  | Disturbance Area |  | Overhead Power Line |
|  | 400' Radius |  | Pipeline |
|  | Facilities Enclosure |  | Access Road |
| | |  | Ditch/Canal |
| | |  | Concrete Ditch |

400ft Radius Map

RIVERBEND 2-24

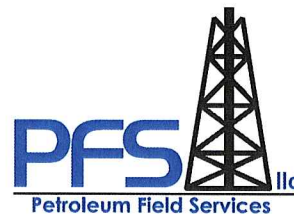
Multi Well Pad

Surface Location: T1N R67W S24
Description of surface uses : Open Field

Field Date: 04/23/2010
Drawing Date: 04/27/2010
Drafter: KLM
Checked By: BHF

Aerial Photo supplied by NAIP - 2009

Prepared for:
KERR-MCGEE OIL &
GAS ONSHORE LP



Use our resources to find yours!
www.petro-fs.com

1801 W. 13th Ave Denver, CO 80204 (303) 928-7128	111 E. Third Street Suite 207 Rifle, CO 81650 (970) 625-4740
--	---