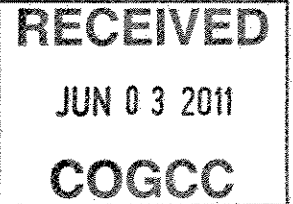




June 2, 2011

Department of Natural Resources
Oil and Gas Conservation Commission
The Chancery Building
1120 Lincoln St., Suite 801
Denver, CO 80203



Re: **20 Day Certification Letter - 318A-e**
Powers 1C-23HZ
Township 2 North, Range 65 West, Section 23: SW/4SE/4
Unit Spacing: 02N-65W-23 E/2E/2
Weld County, Colorado

Ladies/Gentlemen:

Kerr McGee Oil and Gas Onshore LP ("KMG") hereby certify to the Director that KMG owns one-hundred percent (100%) of the mineral rights in the proposed spacing unit. Therefore, KMG respectfully requests the Director to approve the boundary well.

If you have any questions or issues regarding this permit, please contact Cheryl Light at (720) 929-6461.

Very truly yours,

KERR-McGEE OIL AND GAS ONSHORE LP

A handwritten signature in cursive script that reads 'Cheryl Light'.

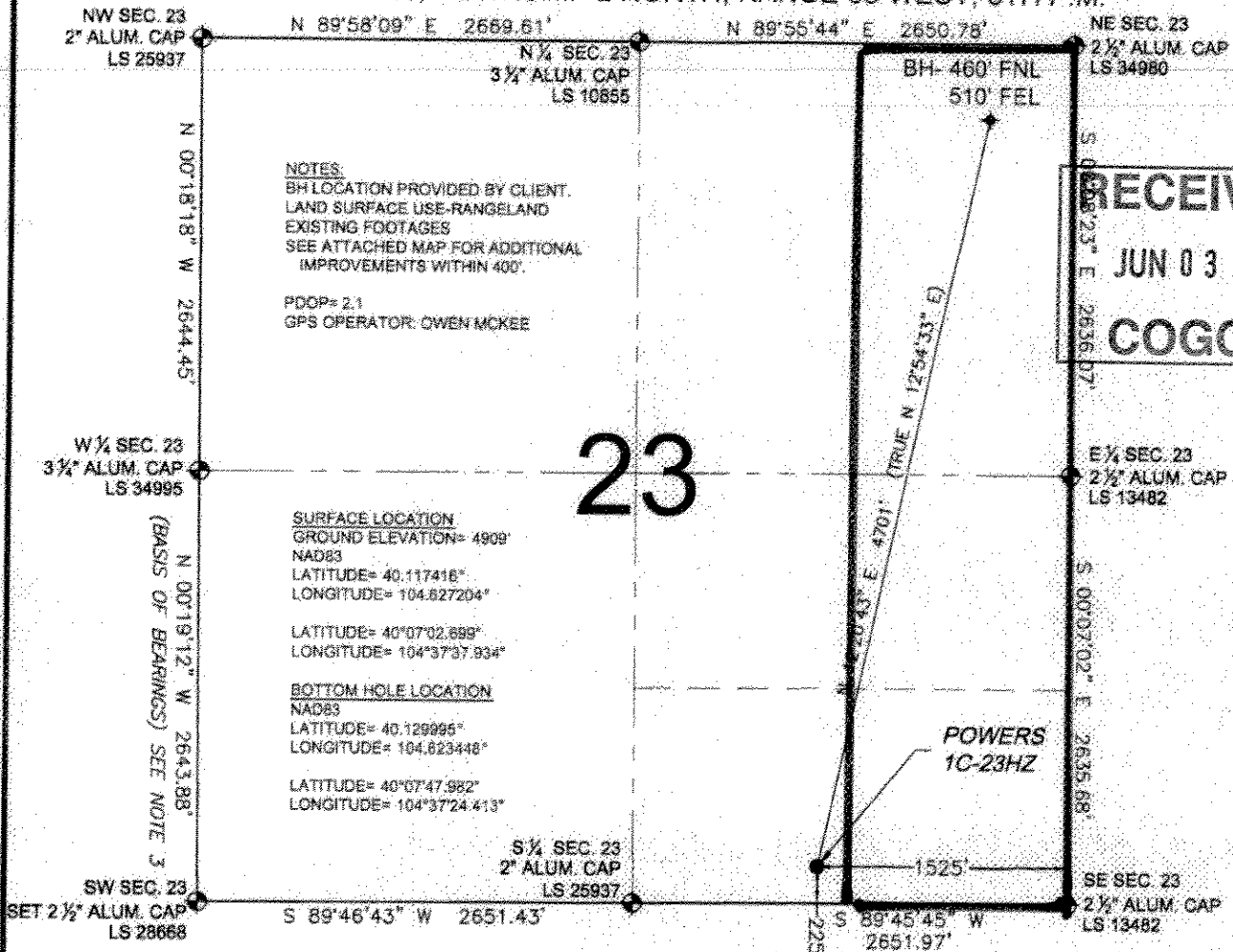
Cheryl Light
Senior Regulatory Analyst

:cl
Enclosure

318A Proposed Spacing
Unit Plan

WELL LOCATION CERTIFICATE: POWERS 1C-23HZ

SECTION 23, TOWNSHIP 2 NORTH, RANGE 65 WEST, 6TH P.M.



NOTES:
BH LOCATION PROVIDED BY CLIENT.
LAND SURFACE USE-RANGELAND
EXISTING FOOTAGES
SEE ATTACHED MAP FOR ADDITIONAL
IMPROVEMENTS WITHIN 400'.

PDOP= 2.1
GPS OPERATOR: OWEN MCKEE

SURFACE LOCATION
GROUND ELEVATION= 4909'
NAD83
LATITUDE= 40.117416°
LONGITUDE= 104.827204°

LATITUDE= 40°07'02.659"
LONGITUDE= 104°37'37.934"

BOTTOM HOLE LOCATION
NAD83
LATITUDE= 40.129995°
LONGITUDE= 104.823448°

LATITUDE= 40°07'47.982"
LONGITUDE= 104°37'24.413"

RECEIVED
JUN 03 2011
COGCC

23

WELL POWERS 1C-23HZ TO BE LOCATED 225' FSL AND 1525' FEL

LEGEND

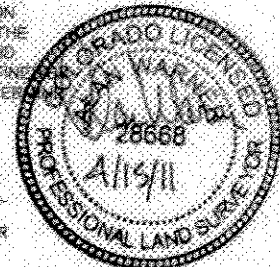
- = EXISTING MONUMENT
- ◆ = PROPOSED WELL
- ◆ = BOTTOM HOLE
- BH = BOTTOM HOLE
- ◆ = EXISTING WELL



NOTES:

- THIS FIELD SURVEY CONFORMS TO THE MINIMUM STANDARDS SET BY THE C.O.G.C.C., RULE NO. 215
- HORIZONTAL POSITIONS AND ORTHOMETRIC ELEVATIONS SHOWN AT THE WELL HEAD, ARE BASED ON GPS-RTK POSITIONS DERIVED FROM MINIMUM 2-HOUR STATIC OBSERVATIONS CORRECTED BY THE NATIONAL GEODETIC SURVEY ONLINE POSITIONING USER SERVICE, O.P.U.S. DATUM: HORIZONTAL = NAD83/2007, VERTICAL = NAVD83
- THE BASIS OF BEARINGS ARE STATE PLANE COORDINATE SYSTEM; GRID BEARINGS SHOWN HEREON BETWEEN THE DESCRIBED THE MONUMENTS SHOWN HEREON.
- GRID DISTANCES ARE SHOWN, AS MEASURED IN THE FIELD, WITH TIES TO WELLS MEASURED PERPENDICULAR TO SECTION LINES.

I, ALAN WARNER, A LICENSED PROFESSIONAL LAND SURVEYOR IN THE STATE OF COLORADO DO HEREBY CERTIFY TO KERR-MCGEE OIL & GAS ONSHORE LP, THAT THE SURVEY AND WELL LOCATION CERTIFICATE SHOWN HEREON WERE DONE BY ME OR UNDER MY DIRECT SUPERVISION AND THAT THE DRAWING SHOWN HEREON ACCURATELY DEPICTS THE PROPOSED LOCATION OF THE WELL. THIS CERTIFICATE DOES NOT REPRESENT A LAND SURVEY PLAT OR IMPROVEMENT SURVEY PLAT AS DEFINED C.R.S. 38:51-102 AND CANNOT BE RELIED UPON TO DETERMINE OWNERSHIP.



ALAN WARNER, PLS 28668
COLORADO LICENSED PROFESSIONAL LAND SURVEYOR
FOR AND ON BEHALF OF P.F.S., LLC

PREPARED BY: 	FIELD DATE: 03-28-11	SURFACE LOCATION: SW 1/4 SE 1/4,
	DRAWING DATE: 04-01-11	SEC. 23, T2N, R65W
	BY: TUN	WELD COUNTY, COLORADO

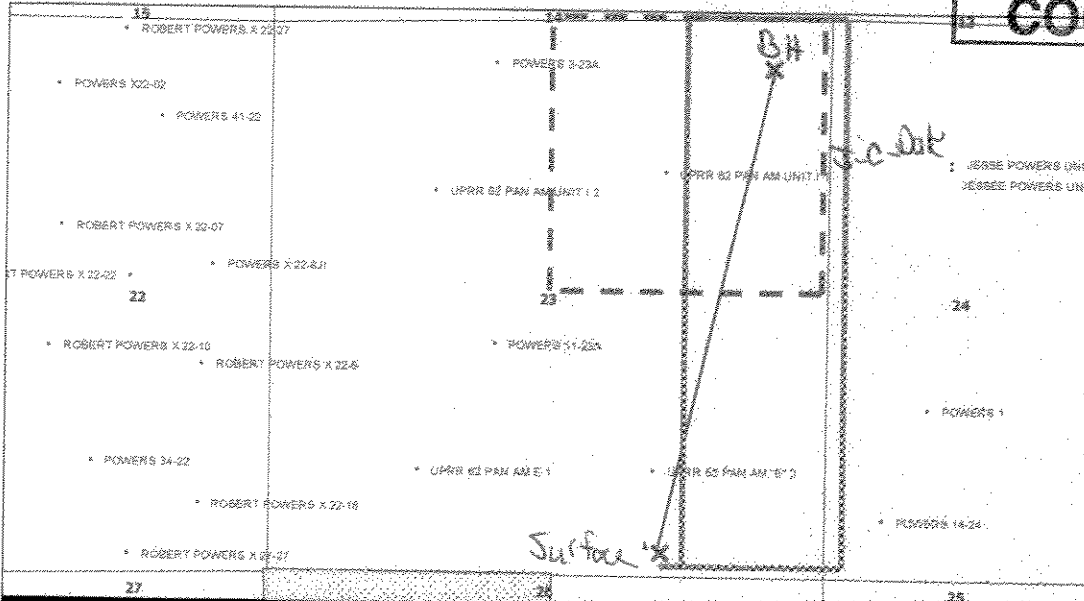
NOTICE: ACCORDING TO COLORADO LAW YOU MUST COMMENCE ANY LEGAL ACTION BASED UPON ANY DEFECT IN THIS SURVEY WITHIN THREE YEARS AFTER YOU FIRST DISCOVER SUCH DEFECT. IN NO EVENT MAY ANY ACTION BASED UPON ANY DEFECT IN THIS SURVEY BE COMMENCED MORE THAN TEN YEARS FROM THE DATE OF THIS CERTIFICATE SHOWN HEREON.

**POWERS 1C-23HZ
SWSE Sec. 23 T2N-R65W**

RECEIVED

JUN 03 2011

COGCC



LEGEND



Proposed 160 acre Spacing Unit (Solid line).



Bottom Hole Located NE/4NE/4, Sec. 23-T2N-R65W (Dashed line).

This 1/4 Section has less than 8 bottom hole wells producing from the Codell, Niobrara & J Sand Formations.