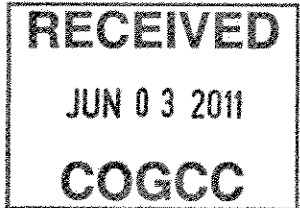




June 2, 2011

Department of Natural Resources  
Oil and Gas Conservation Commission  
The Chancery Building  
1120 Lincoln St., Suite 801  
Denver, CO 80203



Re: **20 Day Certification Letter - 318A-e**  
Powers 1N-23HZ  
Township 2 North, Range 65 West, Section 23: SW/4SE/4  
Unit Spacing: 02N-65W-23 E/2E/2  
Weld County, Colorado

Ladies/Gentlemen:

Kerr McGee Oil and Gas Onshore LP ("KMG") hereby certify to the Director that KMG owns one-hundred percent (100%) of the mineral rights in the proposed spacing unit. Therefore, KMG respectfully requests the Director to approve the boundary well.

If you have any questions or issues regarding this permit, please contact Cheryl Light at (720) 929-6461.

Very truly yours,

**KERR-McGEE OIL AND GAS ONSHORE LP**

A handwritten signature in cursive script that reads 'Cheryl Light'.

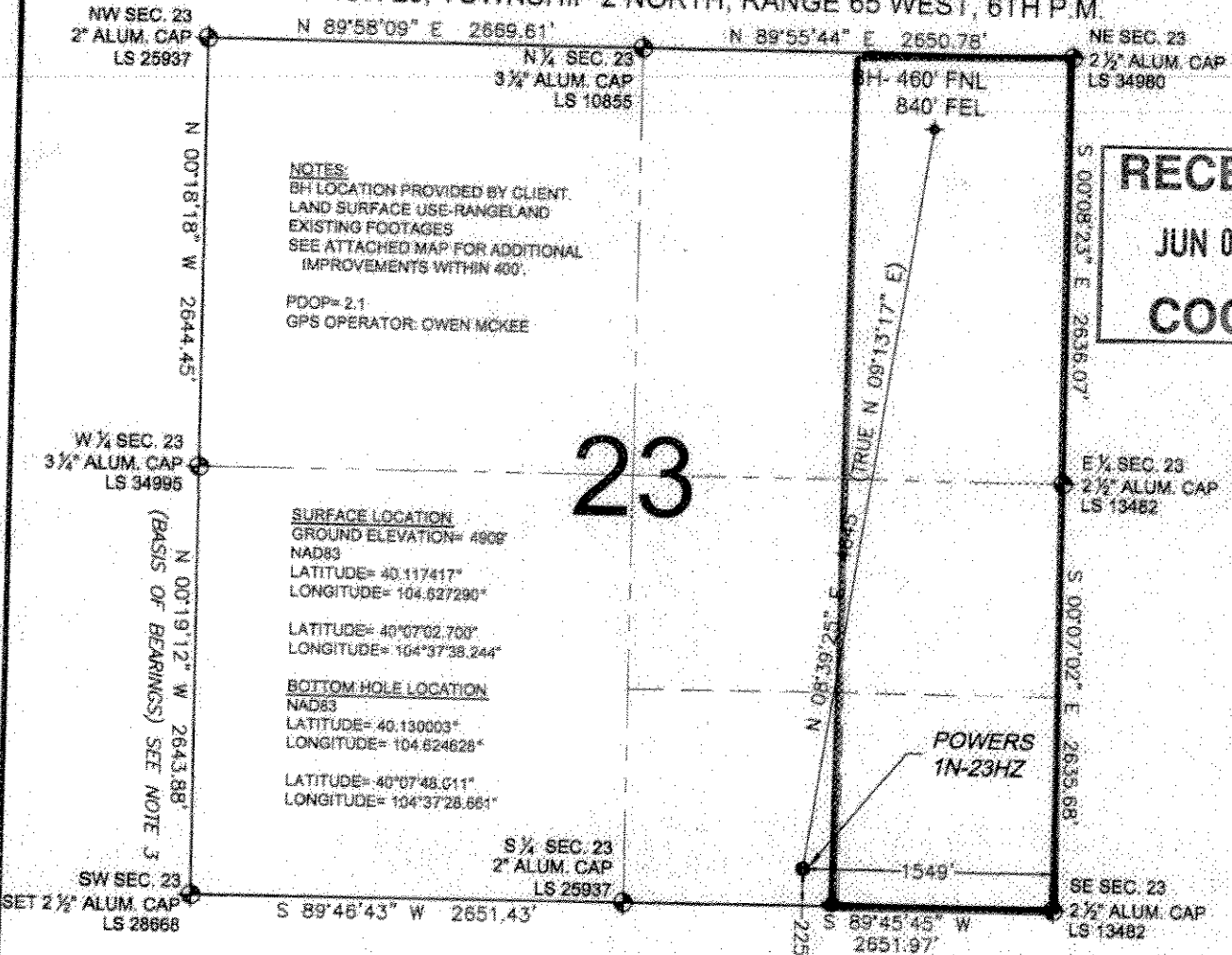
**Cheryl Light**  
**Senior Regulatory Analyst**

:cl  
Enclosure

318A Proposed Spacing  
Unit Plan

# WELL LOCATION CERTIFICATE: POWERS 1N-23HZ

SECTION 23, TOWNSHIP 2 NORTH, RANGE 65 WEST, 6TH P.M.



**RECEIVED**  
JUN 03 2011  
**COGCC**

**LEGEND**

- (Diamond with dot) = EXISTING MONUMENT  
 (Circle with dot) = PROPOSED WELL  
 (Diamond) = BOTTOM HOLE  
 (Diamond with cross) = EXISTING WELL  
 BH = BOTTOM HOLE

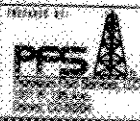
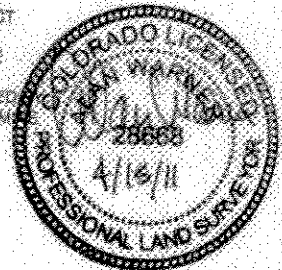
0 500 1000  
SCALE: 1"=1000'

**NOTES:**

- THIS FIELD SURVEY CONFORMS TO THE MINIMUM STANDARDS SET BY THE C.O.G.C.C., RULE NO. 215
- HORIZONTAL POSITIONS AND ORTHOMETRIC ELEVATIONS SHOWN AT THE WELL HEAD, ARE BASED ON GPS-RTK POSITIONS DERIVED FROM MINIMUM 2-HOUR STATIC OBSERVATIONS CORRECTED BY THE NATIONAL GEODETIC SURVEY ONLINE POSITIONING USER SERVICE, G.P.U.S. DATUM: HORIZONTAL = NAD83/2011, VERTICAL = NAVD83
- THE BASIS OF BEARINGS ARE STATE PLANE COORDINATE SYSTEM GRID BEARINGS SHOWN HEREON BETWEEN THE DESCRIBED THE MONUMENTS SHOWN HEREON
- GRID DISTANCES ARE SHOWN, AS MEASURED IN THE FIELD, WITH TIES TO WELLS MEASURED PERPENDICULAR TO SECTION LINES.

I, ALAN WARNER A LICENSED PROFESSIONAL LAND SURVEYOR IN THE STATE OF COLORADO DO HEREBY CERTIFY TO KERR-MCGEE OIL & GAS ONSHORE LP, THAT THE SURVEY AND WELL LOCATION CERTIFICATE SHOWN HEREON WERE DONE BY ME OR UNDER MY DIRECT SUPERVISION AND THAT THE DRAWING SHOWN HEREON ACCURATELY DEPICTS THE PROPOSED LOCATION OF THE WELL. THIS CERTIFICATE DOES NOT REPRESENT A LAND SURVEY PLAT OR IMPROVEMENT SURVEY PLAT AS DEFINED C.R.S. 38-21-102 AND CANNOT BE RELIED UPON TO DETERMINE OWNERSHIP.

ALAN WARNER, PLS 28668  
COLORADO LICENSED PROFESSIONAL LAND-SURVEYOR  
FOR AND ON BEHALF OF P.F.S., LLC



FIELD DATE: 03-28-11  
 DRAWING DATE: 04-01-11  
 BY: TON  
 SURFACE LOCATION: SW 1/4 SE 1/4, SEC. 23, T2N, R65W  
 WELD COUNTY, COLORADO

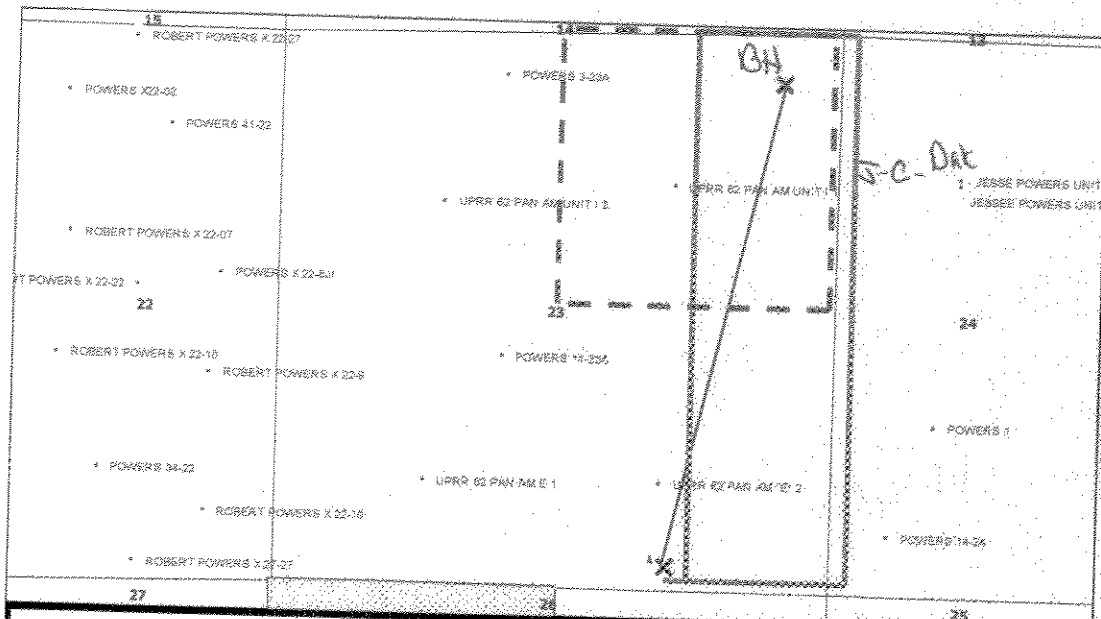
NOTICE: ACCORDING TO COLORADO LAW YOU MUST COMMENCE ANY LEGAL ACTION BASED UPON ANY DEFECT IN THIS SURVEY WITHIN THREE YEARS AFTER YOU FIRST DISCOVER SUCH DEFECT. IN NO EVENT ANY ACTION BASED UPON ANY DEFECT IN THIS SURVEY BE COMMENCED MORE THAN TEN YEARS FROM THE DATE OF THIS CERTIFICATION SHOWN HEREON.

**POWERS 1N-23HZ**  
**SWSE Sec. 23 T2N-R65W**

**RECEIVED**

**JUN 03 2011**

**COGCC**



**LEGEND**



Proposed 160 acre Spacing Unit (Solid line).



Bottom-Hole Located NE/4NE/4, Sec. 23-T2N-R65W (Dashed line).

**This 1/4 Section has less than 8 bottom hole wells producing from the Codell, Niobrara & J Sand Formations.**