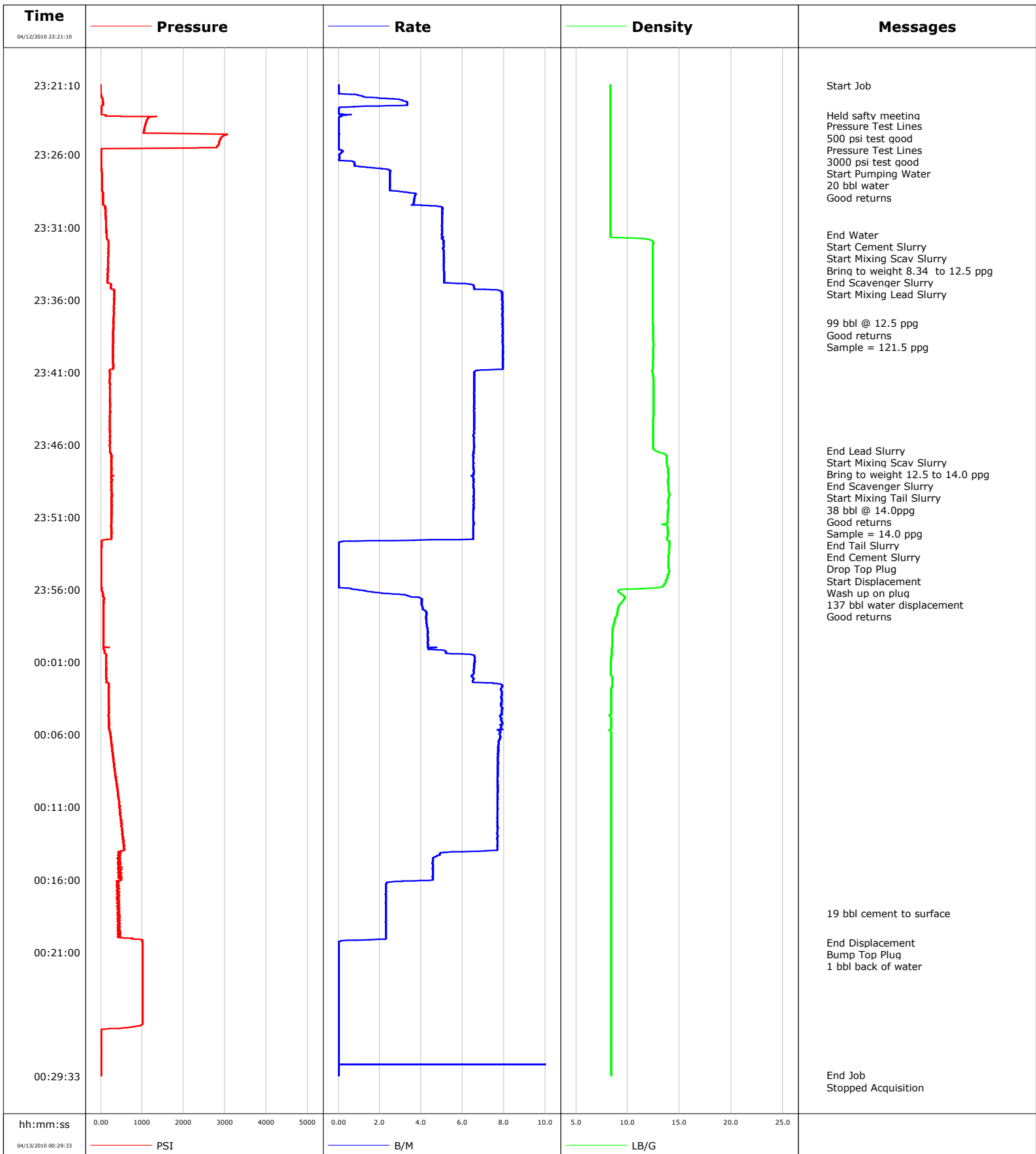


Well	WF04C-27 K22 596,1	Client	Encana
Field	N Parachute	SIR No.	B2K7-00054
Engineer	Terry Borg	Job Type	9 5/8 surface
Country	United States	Job Date	04-12-2010



Well		Field		Job Start		Customer		Job Number	
WF04C-27 K22 596,1 WF04c-27 K22 596,1		N Parachute		Apr/12/2010		Encana		B2K7-00054	
Date	Time 24-hr clock	Treating Pressure PSI	Flow Rate B/M	Density LB/G	Volume BBL	Message			
04/12/2010	23:31:30	136	5.0	8.32	20.2				
04/12/2010	23:31:33					Start Cement Slurry			
04/12/2010	23:31:33	140	5.0	8.32	20.4				
04/12/2010	23:31:34					Start Mixing Scav Slurry			
04/12/2010	23:31:34	133	5.0	8.32	20.5				
04/12/2010	23:31:58					Bring to weight 8.34 to 12.5 ppg			
04/12/2010	23:31:58	178	5.1	12.41	22.5				
04/12/2010	23:32:05					End Scavenger Slurry			
04/12/2010	23:32:05	191	5.1	12.45	23.1				
04/12/2010	23:32:06					Start Mixing Lead Slurry			
04/12/2010	23:32:06	182	5.1	12.47	23.2				
04/12/2010	23:34:03	171	5.1	12.41	33.1				
04/12/2010	23:37:37					99 bbl @ 12.5 ppg			
04/12/2010	23:37:37	302	7.9	12.42	58.4				
04/12/2010	23:37:41					Good returns			
04/12/2010	23:37:41	312	7.9	12.43	59.0				
04/12/2010	23:37:44					Sample = 121.5 ppg			
04/12/2010	23:37:44	298	7.9	12.43	59.4				
04/12/2010	23:39:03	294	8.0	12.50	69.8				
04/12/2010	23:44:03	214	6.6	12.48	105.1				
04/12/2010	23:46:23					End Lead Slurry			
04/12/2010	23:46:23	215	6.5	12.65	120.4				
04/12/2010	23:46:25					Start Mixing Scav Slurry			
04/12/2010	23:46:25	229	6.5	12.70	120.6				
04/12/2010	23:46:27					Bring to weight 12.5 to 14.0 ppg			
04/12/2010	23:46:27	221	6.5	12.78	120.8				
04/12/2010	23:47:29					End Scavenger Slurry			
04/12/2010	23:47:29	260	6.5	13.82	127.5				
04/12/2010	23:47:31					Start Mixing Tail Slurry			
04/12/2010	23:47:31	254	6.5	13.83	127.8				
04/12/2010	23:48:46					38 bbl @ 14.0ppg			
04/12/2010	23:48:46	262	6.5	13.91	135.9				
04/12/2010	23:48:49					Good returns			
04/12/2010	23:48:49	278	6.5	13.93	136.2				
04/12/2010	23:48:51					Sample = 14.0 ppg			
04/12/2010	23:48:51	251	6.5	13.93	136.5				
04/12/2010	23:49:03	263	6.5	13.92	137.8				
04/12/2010	23:52:33					End Tail Slurry			
04/12/2010	23:52:33	158	5.8	13.81	160.6				
04/12/2010	23:52:37					End Cement Slurry			
04/12/2010	23:52:37	15	2.7	13.89	160.9				
04/12/2010	23:52:41					Drop Top Plug			
04/12/2010	23:52:41	17	0.3	14.04	160.9				
04/12/2010	23:52:43					Start Displacement			
04/12/2010	23:52:43	15	0.1	14.04	160.9				
04/12/2010	23:52:47					Wash up on plug			
04/12/2010	23:52:47	14	0.0	14.05	160.9				
04/12/2010	23:52:49					137 bbl water displacement			
04/12/2010	23:52:49	13	0.0	14.04	160.9				
04/12/2010	23:52:51					Good returns			
04/12/2010	23:52:51	14	0.0	14.04	160.9				
04/12/2010	23:54:03	9	0.0	13.92	160.9				
04/12/2010	23:59:03	63	4.3	8.52	172.8				
04/13/2010	00:04:03	195	7.9	8.41	204.8				

Well		Field		Job Start		Customer		Job Number	
WF04C-27 K22 596,1 WF04c-27 K22 596,1		N Parachute		Apr/12/2010		Encana		B2K7-00054	
Date	Time 24-hr clock	Treating Pressure PSI	Flow Rate B/M	Density LB/G	Volume BBL	Message			
04/13/2010	00:14:03	520	6.8	8.40	282.1				
04/13/2010	00:18:19					19 bbl cement to surface			
04/13/2010	00:18:19	410	2.3	8.40	296.8				
04/13/2010	00:19:03	440	2.3	8.40	298.5				
04/13/2010	00:20:21					End Displacement			
04/13/2010	00:20:21	1012	0.0	8.41	301.1				
04/13/2010	00:20:22					Bump Top Plug			
04/13/2010	00:20:22	1009	0.0	8.41	301.1				
04/13/2010	00:20:34					1 bbl back of water			
04/13/2010	00:20:34	1005	0.0	8.40	301.1				
04/13/2010	00:24:03	1006	0.0	8.40	301.1				
04/13/2010	00:29:03	3	0.0	8.40	306.1				
04/13/2010	00:29:30					End Job			
04/13/2010	00:29:30	2	0.0	8.40	306.1				

Post Job Summary

Average Pump Rates, bbl/min				Volume of Fluid Injected, bbl			
Slurry	N2	Mud	Maximum Rate	Total Slurry	Mud	Spacer	N2
5.6		0.0	301.1	137.0	0.0	20.4	
Treating Pressure Summary, psi				Breakdown Fluid			
Maximum	Final	Average	Bump Plug to	Breakdown	Type	Volume	Density
3063	3	342	1000				
Avg. N2 Percent	Designed Slurry Volume	Displacement	Mix Water Temp	Cement Circulated to Surface?	<input checked="" type="checkbox"/>	Volume	19.0 bbl
	137.0 bbl	137.0 bbl	65 degF	Washed Thru Perfs	<input type="checkbox"/>	To	
Customer or Authorized Representative		Schlumberger Supervisor			Circulation Lost	<input type="checkbox"/>	Job Completed
Floyd Roberts		Terry Borg			-		<input checked="" type="checkbox"/>