

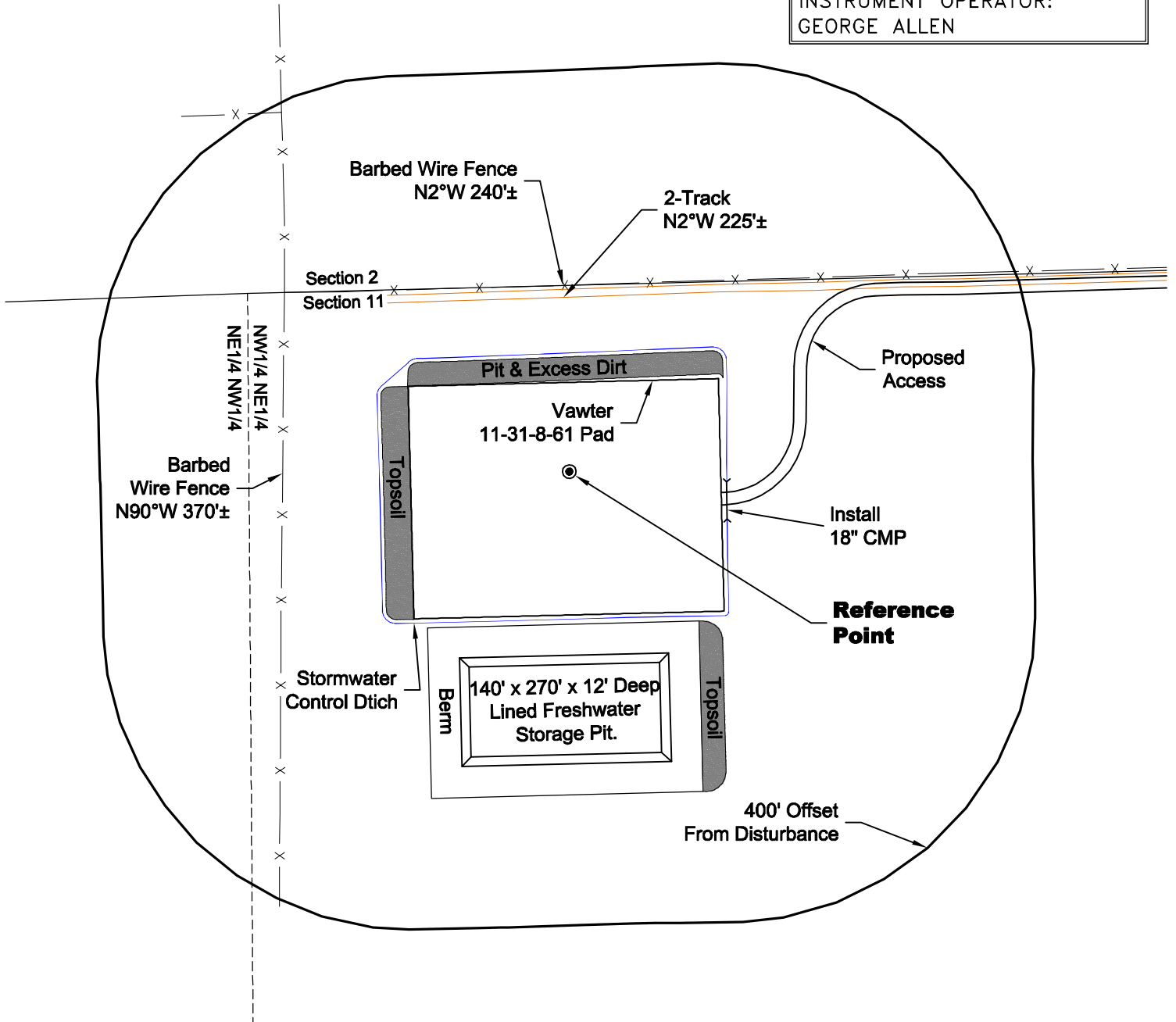
LOCATION DRAWING

VEGETATION:
CRP

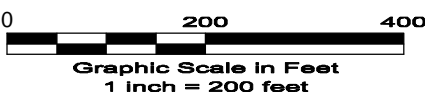
SURFACE USE:
NON CROP LAND

REFERENCE POINT

LATITUDE: 40.68317
LONGITUDE: -104.17067
FOOTAGE: 240 FNL 2228 FEL
GROUND ELEVATION: 4983.3
PDOP: 1.9 DATE: 6/1/2011
INSTRUMENT OPERATOR: GEORGE ALLEN



DWG: G:\GEO SURV\WeldzNorth\Carrizo 110004\Wellplats\Vawter 11-31-8-61\F2A.dwg USER: MTC DATE: Jun 02, 2011 3:32pm



DISTURBANCE ACREAGE:
3.8± DRILLING OPERATIONS
2.0± FRESHWATER STORAGE PIT
1.0± INTERIM RECLAIM

NOTE:
ALL PRODUCTION FACILITIES WILL BE ON PAD.

6/2/11

LAND SURVEYING AND MAPPING
LAFAYETTE - WINTER PARK
Ph 303 666 0379 Fx 303 665 6320

CARRIZO OIL & GAS, INC
VAWTER 11-31-8-61 PAD

NW1/4 NE1/4 SEC. 11 T8N R61W
6th PM WELD COUNTY COLORADO