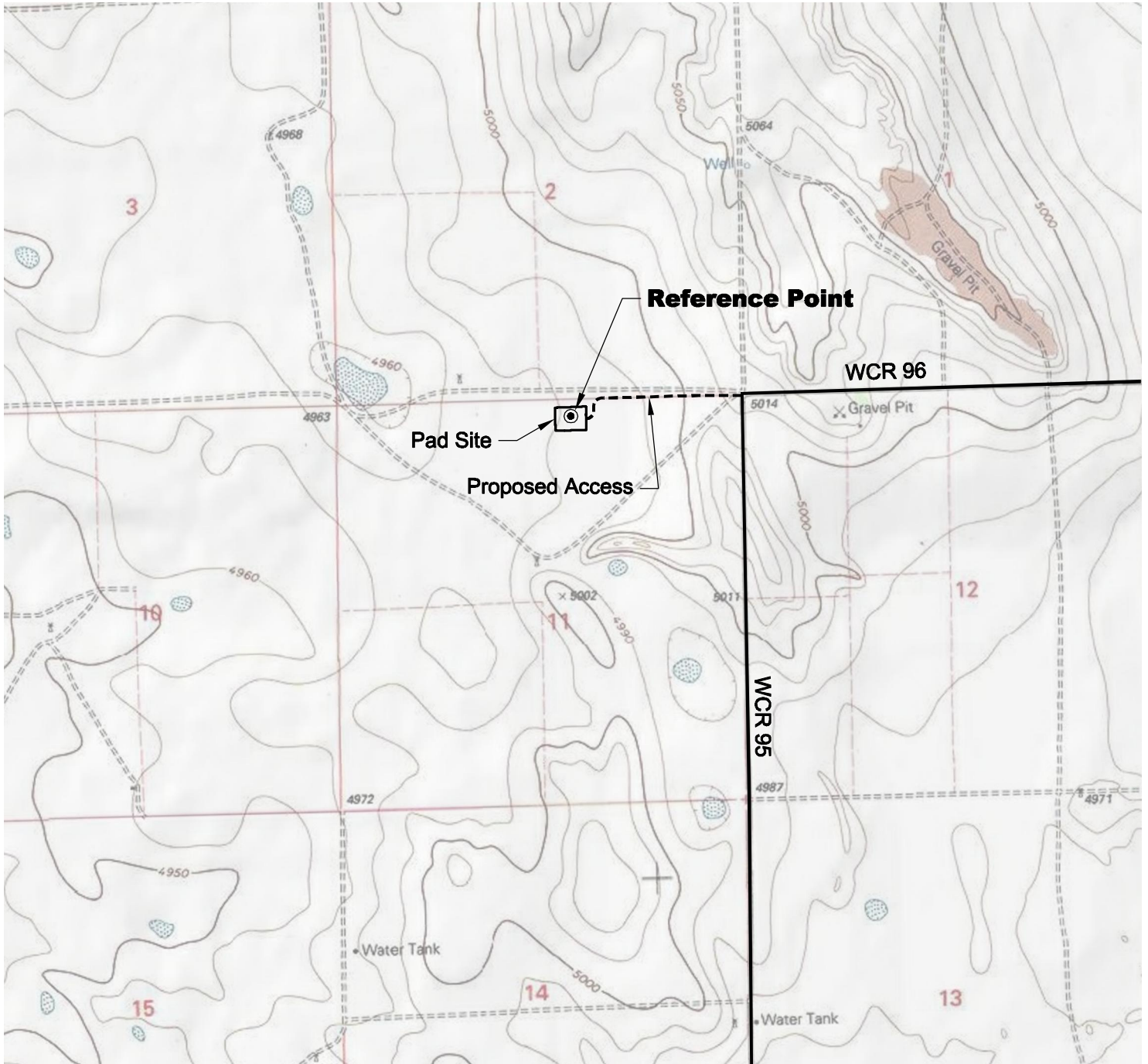


ACCESS ROAD MAP



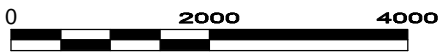
DRIVING DIRECTIONS:

- MP 0.0 - Intersection of Highway 14 a.k.a. WCR 90 & Highway 392 a.k.a. WCR 77 in Briggsdale; East on Highway 14
- MP 8.9 - Left on WCR 95;
- MP 11.9 - Left on access to Vawter 11-31-8-61 Pad
- MP 12.3 - Vawter 11-31-8-61 Pad

6/2/11



North



Graphic Scale in Feet
1 inch = 2000 feet

GEO SURV

LAND SURVEYING AND MAPPING
LAFAYETTE - WINTER PARK
Ph 303 666 0379 Fx 303 665 6320

CARRIZO OIL & GAS, INC
VAWTER 11-31-8-61 PAD

NW1/4 NE1/4 SEC. 11 T8N R61W
6th PM WELD COUNTY COLORADO

DWG: G:\GEO SURV\Weld\North\Carrizo 110004\Wellplats\Vawter 11-31-8-61\Vawter 11-31-8-61 F2A.dwg USER: MTC DATE: Jun 02, 2011 3:33pm