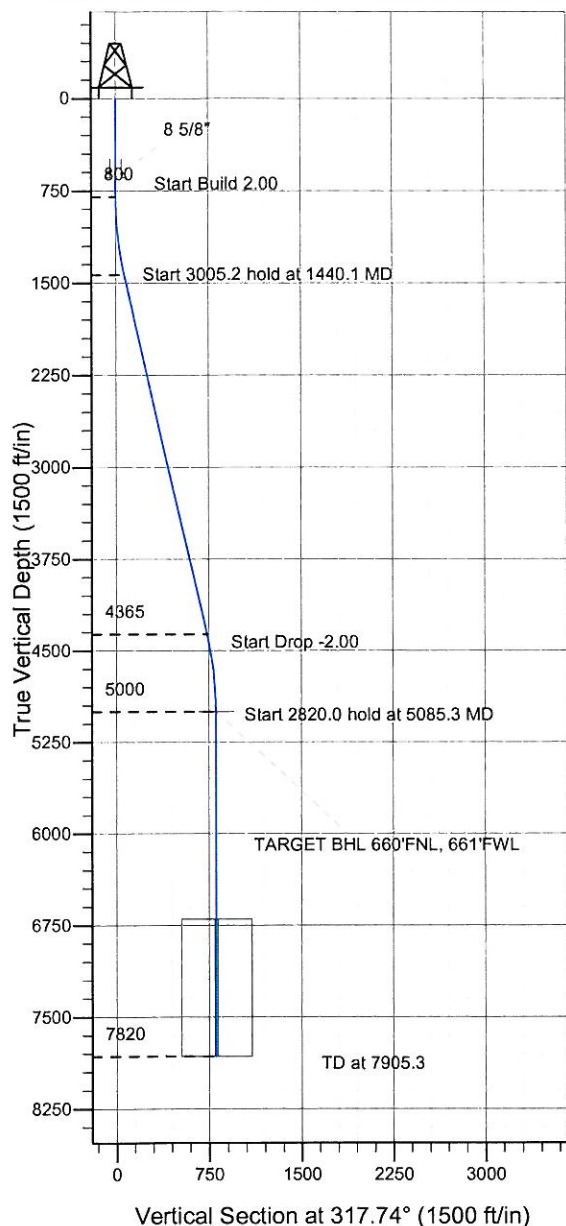


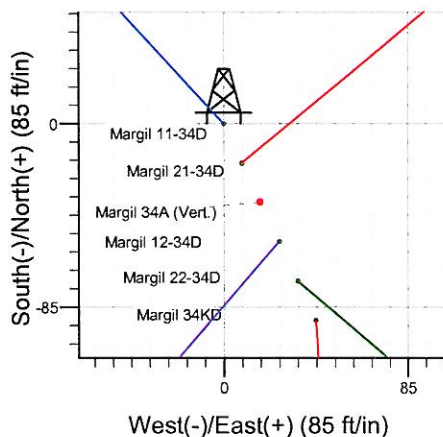
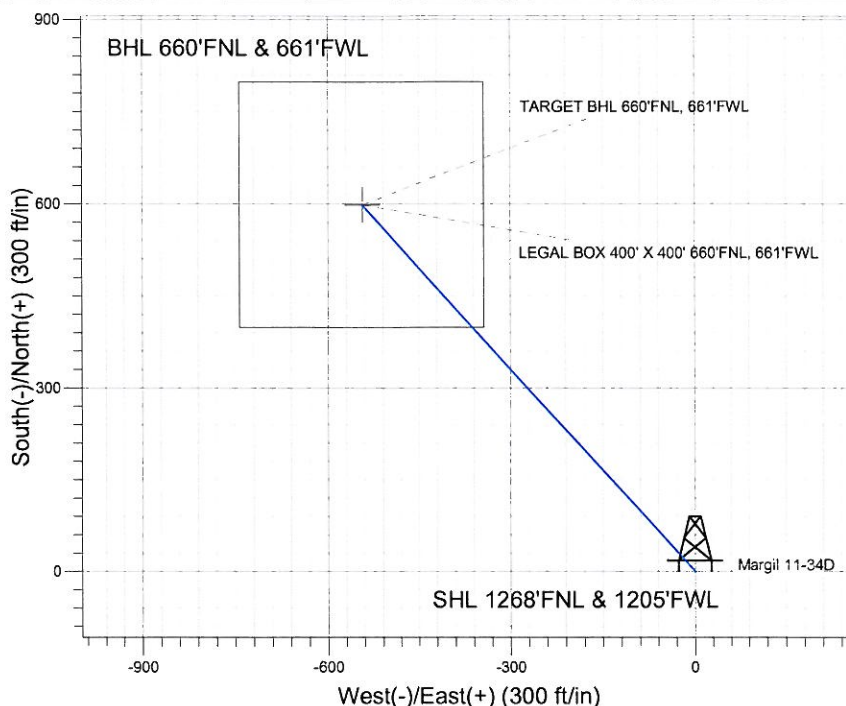
ENSIGN Directional

Well Name: Margil 11-34D

Surface Location: Margil 11-34D Pad Sec.34-T4N-R68W
 North American Datum 1983 US State Plane 1983 Colorado Northern Zone
 Ground Elevation: 5104.0
 +N/-S +E/-W Northing Easting Latitude Longitude Slot
 0.0 0.0 1342915.75 3141087.50 40.273599 -104.994361
 Original Well Elev WELL @ 5117.0ft (Original Well Elev)



Synergy Resources



Margil 11-34D Pad Sec.34-T4N-R68W
 Margil 11-34D
 Plan #1 (5-23-11)
 7:18, May 27 2011



Azimuths to True North
 Magnetic North: 8.98°
 Magnetic Field
 Strength: 53044.3snT
 Dip Angle: 66.91°
 Date: 5/23/2011
 Model: IGRF2010

WELLBORE TARGET DETAILS (LAT/LONG)

Name	TVD	+N/-S	+E/-W	Latitude	Longitude	Shape
TARGET BHL 660'FNL, 661'FWL	5000.0	598.2	-543.6	40.275241	-104.996309	Point
LEGAL BOX 400' X 400' 660'FNL, 661'FWL	6700.0	598.2	-543.6	40.275241	-104.996309	Rectangle (Sides: L400.0 W400.0)

SECTION DETAILS

Sec	MD	Inc	Azi	TVD	+N/-S	+E/-W	DLeg	TFace	VSec	Target
1	0.0	0.00	0.00	0.0	0.0	0.0	0.00	0.00	0.0	
2	800.0	0.00	0.00	800.0	0.0	0.0	0.00	0.00	0.0	
3	1440.1	12.80	317.74	1434.8	52.7	-47.9	2.00	317.74	71.2	
4	4445.3	12.80	317.74	4365.2	545.5	-495.7	0.00	0.00	737.1	
5	5085.3	0.00	0.00	5000.0	598.2	-543.6	2.00	180.00	808.3	TARGET BHL 660'FNL, 661'FWL
6	7905.3	0.00	0.00	7820.0	598.2	-543.6	0.00	0.00	808.3	



Directional

Synergy Resources

SEC.34-T4N-R68W

Margil 11-34D Pad Sec.34-T4N-R68W

Margil 11-34D

Wellbore #1

Plan: Plan #1 (5-23-11)

Standard Planning Report

27 May, 2011

Database: Landmark
Company: Synergy Resources
Project: SEC.34-T4N-R68W
Site: Margil 11-34D Pad Sec.34-T4N-R68W
Well: Margil 11-34D
Wellbore: Wellbore #1
Design: Plan #1 (5-23-11)

Local Co-ordinate Reference: Well Margil 11-34D
TVD Reference: WELL @ 5117.0ft (Original Well Elev)
MD Reference: WELL @ 5117.0ft (Original Well Elev)
North Reference: True
Survey Calculation Method: Minimum Curvature

Project SEC.34-T4N-R68W, Weld County, Colorado

Map System: US State Plane 1983
Geo Datum: North American Datum 1983
Map Zone: Colorado Northern Zone

System Datum: Mean Sea Level
 Using Well Reference Point
 Using geodetic scale factor

Site Margil 11-34D Pad Sec.34-T4N-R68W

Site Position: Northing: 1,342,915.75 ft Latitude: 40.273599
From: Lat/Long Easting: 3,141,087.50 ft Longitude: -104.994361
Position Uncertainty: 0.0 ft Slot Radius: " Grid Convergence: 0.33 °

Well Margil 11-34D

Well Position +N/-S 0.0 ft Northing: 1,342,915.75 ft Latitude: 40.273599
 +E/-W 0.0 ft Easting: 3,141,087.50 ft Longitude: -104.994361
Position Uncertainty 0.0 ft Wellhead Elevation: ft Ground Level: 5,104.0 ft

Wellbore Wellbore #1

Magnetics	Model Name	Sample Date	Declination (°)	Dip Angle (°)	Field Strength (nT)
	IGRF2010	5/23/2011	8.98	66.91	53,044

Design Plan #1 (5-23-11)

Audit Notes:

Version: Phase: PROTOTYPE Tie On Depth: 0.0

Vertical Section:	Depth From (TVD) (ft)	+N/-S (ft)	+E/-W (ft)	Direction (°)
	0.0	0.0	0.0	317.74

Plan Sections

Measured Depth (ft)	Inclination (°)	Azimuth (°)	Vertical Depth (ft)	+N/-S (ft)	+E/-W (ft)	Dogleg Rate (°/100ft)	Build Rate (°/100ft)	Turn Rate (°/100ft)	TFO (°)	Target
0.0	0.00	0.00	0.0	0.0	0.0	0.00	0.00	0.00	0.00	
800.0	0.00	0.00	800.0	0.0	0.0	0.00	0.00	0.00	0.00	
1,440.1	12.80	317.74	1,434.8	52.7	-47.9	2.00	2.00	0.00	317.74	
4,445.3	12.80	317.74	4,365.2	545.5	-495.7	0.00	0.00	0.00	0.00	
5,085.3	0.00	0.00	5,000.0	598.2	-543.6	2.00	-2.00	0.00	180.00	TARGET BHL 660'I
7,905.3	0.00	0.00	7,820.0	598.2	-543.6	0.00	0.00	0.00	0.00	

Database: Landmark
Company: Synergy Resources
Project: SEC.34-T4N-R68W
Site: Margil 11-34D Pad Sec.34-T4N-R68W
Well: Margil 11-34D
Wellbore: Wellbore #1
Design: Plan #1 (5-23-11)

Local Co-ordinate Reference: Well Margil 11-34D
TVD Reference: WELL @ 5117.0ft (Original Well Elev)
MD Reference: WELL @ 5117.0ft (Original Well Elev)
North Reference: True
Survey Calculation Method: Minimum Curvature

Planned Survey

Measured Depth (ft)	Inclination (°)	Azimuth (°)	Vertical Depth (ft)	+N/-S (ft)	+E/-W (ft)	Vertical Section (ft)	Dogleg Rate (°/100ft)	Build Rate (°/100ft)	Turn Rate (°/100ft)
0.0	0.00	0.00	0.0	0.0	0.0	0.0	0.00	0.00	0.00
40.0	0.00	0.00	40.0	0.0	0.0	0.0	0.00	0.00	0.00
80.0	0.00	0.00	80.0	0.0	0.0	0.0	0.00	0.00	0.00
120.0	0.00	0.00	120.0	0.0	0.0	0.0	0.00	0.00	0.00
160.0	0.00	0.00	160.0	0.0	0.0	0.0	0.00	0.00	0.00
200.0	0.00	0.00	200.0	0.0	0.0	0.0	0.00	0.00	0.00
240.0	0.00	0.00	240.0	0.0	0.0	0.0	0.00	0.00	0.00
280.0	0.00	0.00	280.0	0.0	0.0	0.0	0.00	0.00	0.00
320.0	0.00	0.00	320.0	0.0	0.0	0.0	0.00	0.00	0.00
360.0	0.00	0.00	360.0	0.0	0.0	0.0	0.00	0.00	0.00
400.0	0.00	0.00	400.0	0.0	0.0	0.0	0.00	0.00	0.00
440.0	0.00	0.00	440.0	0.0	0.0	0.0	0.00	0.00	0.00
480.0	0.00	0.00	480.0	0.0	0.0	0.0	0.00	0.00	0.00
520.0	0.00	0.00	520.0	0.0	0.0	0.0	0.00	0.00	0.00
560.0	0.00	0.00	560.0	0.0	0.0	0.0	0.00	0.00	0.00
600.0	0.00	0.00	600.0	0.0	0.0	0.0	0.00	0.00	0.00
640.0	0.00	0.00	640.0	0.0	0.0	0.0	0.00	0.00	0.00
8 5/8"									
680.0	0.00	0.00	680.0	0.0	0.0	0.0	0.00	0.00	0.00
720.0	0.00	0.00	720.0	0.0	0.0	0.0	0.00	0.00	0.00
760.0	0.00	0.00	760.0	0.0	0.0	0.0	0.00	0.00	0.00
800.0	0.00	0.00	800.0	0.0	0.0	0.0	0.00	0.00	0.00
840.0	0.80	317.74	840.0	0.2	-0.2	0.3	2.00	2.00	0.00
880.0	1.60	317.74	880.0	0.8	-0.8	1.1	2.00	2.00	0.00
920.0	2.40	317.74	920.0	1.9	-1.7	2.5	2.00	2.00	0.00
960.0	3.20	317.74	959.9	3.3	-3.0	4.5	2.00	2.00	0.00
1,000.0	4.00	317.74	999.8	5.2	-4.7	7.0	2.00	2.00	0.00
1,040.0	4.80	317.74	1,039.7	7.4	-6.8	10.0	2.00	2.00	0.00
1,080.0	5.60	317.74	1,079.6	10.1	-9.2	13.7	2.00	2.00	0.00
1,120.0	6.40	317.74	1,119.3	13.2	-12.0	17.9	2.00	2.00	0.00
1,160.0	7.20	317.74	1,159.1	16.7	-15.2	22.6	2.00	2.00	0.00
1,200.0	8.00	317.74	1,198.7	20.6	-18.7	27.9	2.00	2.00	0.00
1,240.0	8.80	317.74	1,238.3	25.0	-22.7	33.7	2.00	2.00	0.00
1,280.0	9.60	317.74	1,277.8	29.7	-27.0	40.1	2.00	2.00	0.00
1,320.0	10.40	317.74	1,317.1	34.8	-31.7	47.1	2.00	2.00	0.00
1,360.0	11.20	317.74	1,356.4	40.4	-36.7	54.6	2.00	2.00	0.00
1,400.0	12.00	317.74	1,395.6	46.3	-42.1	62.6	2.00	2.00	0.00
1,440.0	12.80	317.74	1,434.7	52.7	-47.9	71.2	2.00	2.00	0.00
1,440.1	12.80	317.74	1,434.8	52.7	-47.9	71.2	2.00	2.00	0.00
1,480.0	12.80	317.74	1,473.7	59.2	-53.8	80.1	0.00	0.00	0.00
1,520.0	12.80	317.74	1,512.7	65.8	-59.8	88.9	0.00	0.00	0.00
1,560.0	12.80	317.74	1,551.7	72.4	-65.8	97.8	0.00	0.00	0.00
1,600.0	12.80	317.74	1,590.7	78.9	-71.7	106.6	0.00	0.00	0.00
1,640.0	12.80	317.74	1,629.7	85.5	-77.7	115.5	0.00	0.00	0.00
1,680.0	12.80	317.74	1,668.7	92.0	-83.6	124.4	0.00	0.00	0.00
1,720.0	12.80	317.74	1,707.7	98.6	-89.6	133.2	0.00	0.00	0.00
1,760.0	12.80	317.74	1,746.7	105.2	-95.6	142.1	0.00	0.00	0.00
1,800.0	12.80	317.74	1,785.7	111.7	-101.5	151.0	0.00	0.00	0.00
1,840.0	12.80	317.74	1,824.7	118.3	-107.5	159.8	0.00	0.00	0.00
1,880.0	12.80	317.74	1,863.8	124.8	-113.4	168.7	0.00	0.00	0.00
1,920.0	12.80	317.74	1,902.8	131.4	-119.4	177.5	0.00	0.00	0.00
1,960.0	12.80	317.74	1,941.8	138.0	-125.4	186.4	0.00	0.00	0.00
2,000.0	12.80	317.74	1,980.8	144.5	-131.3	195.3	0.00	0.00	0.00
2,040.0	12.80	317.74	2,019.8	151.1	-137.3	204.1	0.00	0.00	0.00

Database: Landmark
Company: Synergy Resources
Project: SEC.34-T4N-R68W
Site: Margil 11-34D Pad Sec.34-T4N-R68W
Well: Margil 11-34D
Wellbore: Wellbore #1
Design: Plan #1 (5-23-11)

Local Co-ordinate Reference: Well Margil 11-34D
TVD Reference: WELL @ 5117.0ft (Original Well Elev)
MD Reference: WELL @ 5117.0ft (Original Well Elev)
North Reference: True
Survey Calculation Method: Minimum Curvature

Planned Survey

Measured Depth (ft)	Inclination (°)	Azimuth (°)	Vertical Depth (ft)	+N/-S (ft)	+E/-W (ft)	Vertical Section (ft)	Dogleg Rate (°/100ft)	Build Rate (°/100ft)	Turn Rate (°/100ft)
2,080.0	12.80	317.74	2,058.8	157.6	-143.2	213.0	0.00	0.00	0.00
2,120.0	12.80	317.74	2,097.8	164.2	-149.2	221.9	0.00	0.00	0.00
2,160.0	12.80	317.74	2,136.8	170.8	-155.2	230.7	0.00	0.00	0.00
2,200.0	12.80	317.74	2,175.8	177.3	-161.1	239.6	0.00	0.00	0.00
2,240.0	12.80	317.74	2,214.8	183.9	-167.1	248.4	0.00	0.00	0.00
2,280.0	12.80	317.74	2,253.8	190.4	-173.0	257.3	0.00	0.00	0.00
2,320.0	12.80	317.74	2,292.8	197.0	-179.0	266.2	0.00	0.00	0.00
2,360.0	12.80	317.74	2,331.8	203.6	-185.0	275.0	0.00	0.00	0.00
2,400.0	12.80	317.74	2,370.8	210.1	-190.9	283.9	0.00	0.00	0.00
2,440.0	12.80	317.74	2,409.8	216.7	-196.9	292.8	0.00	0.00	0.00
2,480.0	12.80	317.74	2,448.8	223.2	-202.8	301.6	0.00	0.00	0.00
2,520.0	12.80	317.74	2,487.8	229.8	-208.8	310.5	0.00	0.00	0.00
2,560.0	12.80	317.74	2,526.9	236.4	-214.8	319.4	0.00	0.00	0.00
2,600.0	12.80	317.74	2,565.9	242.9	-220.7	328.2	0.00	0.00	0.00
2,640.0	12.80	317.74	2,604.9	249.5	-226.7	337.1	0.00	0.00	0.00
2,680.0	12.80	317.74	2,643.9	256.0	-232.6	345.9	0.00	0.00	0.00
2,720.0	12.80	317.74	2,682.9	262.6	-238.6	354.8	0.00	0.00	0.00
2,760.0	12.80	317.74	2,721.9	269.1	-244.6	363.7	0.00	0.00	0.00
2,800.0	12.80	317.74	2,760.9	275.7	-250.5	372.5	0.00	0.00	0.00
2,840.0	12.80	317.74	2,799.9	282.3	-256.5	381.4	0.00	0.00	0.00
2,880.0	12.80	317.74	2,838.9	288.8	-262.4	390.3	0.00	0.00	0.00
2,920.0	12.80	317.74	2,877.9	295.4	-268.4	399.1	0.00	0.00	0.00
2,960.0	12.80	317.74	2,916.9	301.9	-274.4	408.0	0.00	0.00	0.00
3,000.0	12.80	317.74	2,955.9	308.5	-280.3	416.8	0.00	0.00	0.00
3,040.0	12.80	317.74	2,994.9	315.1	-286.3	425.7	0.00	0.00	0.00
3,080.0	12.80	317.74	3,033.9	321.6	-292.2	434.6	0.00	0.00	0.00
3,120.0	12.80	317.74	3,072.9	328.2	-298.2	443.4	0.00	0.00	0.00
3,160.0	12.80	317.74	3,111.9	334.7	-304.2	452.3	0.00	0.00	0.00
3,200.0	12.80	317.74	3,150.9	341.3	-310.1	461.2	0.00	0.00	0.00
3,240.0	12.80	317.74	3,189.9	347.9	-316.1	470.0	0.00	0.00	0.00
3,280.0	12.80	317.74	3,229.0	354.4	-322.0	478.9	0.00	0.00	0.00
3,320.0	12.80	317.74	3,268.0	361.0	-328.0	487.7	0.00	0.00	0.00
3,360.0	12.80	317.74	3,307.0	367.5	-334.0	496.6	0.00	0.00	0.00
3,400.0	12.80	317.74	3,346.0	374.1	-339.9	505.5	0.00	0.00	0.00
3,440.0	12.80	317.74	3,385.0	380.7	-345.9	514.3	0.00	0.00	0.00
3,480.0	12.80	317.74	3,424.0	387.2	-351.8	523.2	0.00	0.00	0.00
3,520.0	12.80	317.74	3,463.0	393.8	-357.8	532.1	0.00	0.00	0.00
3,560.0	12.80	317.74	3,502.0	400.3	-363.8	540.9	0.00	0.00	0.00
3,600.0	12.80	317.74	3,541.0	406.9	-369.7	549.8	0.00	0.00	0.00
3,640.0	12.80	317.74	3,580.0	413.5	-375.7	558.6	0.00	0.00	0.00
3,680.0	12.80	317.74	3,619.0	420.0	-381.6	567.5	0.00	0.00	0.00
3,720.0	12.80	317.74	3,658.0	426.6	-387.6	576.4	0.00	0.00	0.00
3,760.0	12.80	317.74	3,697.0	433.1	-393.6	585.2	0.00	0.00	0.00
3,800.0	12.80	317.74	3,736.0	439.7	-399.5	594.1	0.00	0.00	0.00
3,840.0	12.80	317.74	3,775.0	446.3	-405.5	603.0	0.00	0.00	0.00
3,880.0	12.80	317.74	3,814.0	452.8	-411.4	611.8	0.00	0.00	0.00
3,920.0	12.80	317.74	3,853.0	459.4	-417.4	620.7	0.00	0.00	0.00
3,960.0	12.80	317.74	3,892.1	465.9	-423.4	629.5	0.00	0.00	0.00
4,000.0	12.80	317.74	3,931.1	472.5	-429.3	638.4	0.00	0.00	0.00
4,040.0	12.80	317.74	3,970.1	479.0	-435.3	647.3	0.00	0.00	0.00
4,080.0	12.80	317.74	4,009.1	485.6	-441.3	656.1	0.00	0.00	0.00
4,120.0	12.80	317.74	4,048.1	492.2	-447.2	665.0	0.00	0.00	0.00
4,160.0	12.80	317.74	4,087.1	498.7	-453.2	673.9	0.00	0.00	0.00
4,200.0	12.80	317.74	4,126.1	505.3	-459.1	682.7	0.00	0.00	0.00

Database: Landmark
Company: Synergy Resources
Project: SEC.34-T4N-R68W
Site: Margil 11-34D Pad Sec.34-T4N-R68W
Well: Margil 11-34D
Wellbore: Wellbore #1
Design: Plan #1 (5-23-11)

Local Co-ordinate Reference: Well Margil 11-34D
TVD Reference: WELL @ 5117.0ft (Original Well Elev)
MD Reference: WELL @ 5117.0ft (Original Well Elev)
North Reference: True
Survey Calculation Method: Minimum Curvature

Planned Survey

Measured Depth (ft)	Inclination (°)	Azimuth (°)	Vertical Depth (ft)	+N/-S (ft)	+E/-W (ft)	Vertical Section (ft)	Dogleg Rate (°/100ft)	Build Rate (°/100ft)	Turn Rate (°/100ft)
4,240.0	12.80	317.74	4,165.1	511.8	-465.1	691.6	0.00	0.00	0.00
4,280.0	12.80	317.74	4,204.1	518.4	-471.1	700.5	0.00	0.00	0.00
4,320.0	12.80	317.74	4,243.1	525.0	-477.0	709.3	0.00	0.00	0.00
4,360.0	12.80	317.74	4,282.1	531.5	-483.0	718.2	0.00	0.00	0.00
4,400.0	12.80	317.74	4,321.1	538.1	-488.9	727.0	0.00	0.00	0.00
4,440.0	12.80	317.74	4,360.1	544.6	-494.9	735.9	0.00	0.00	0.00
4,445.3	12.80	317.74	4,365.2	545.5	-495.7	737.1	0.00	0.00	0.00
4,480.0	12.11	317.74	4,399.2	551.0	-500.7	744.6	2.00	-2.00	0.00
4,520.0	11.31	317.74	4,438.3	557.1	-506.2	752.7	2.00	-2.00	0.00
4,560.0	10.51	317.74	4,477.6	562.7	-511.3	760.2	2.00	-2.00	0.00
4,600.0	9.71	317.74	4,517.0	567.8	-516.0	767.3	2.00	-2.00	0.00
4,640.0	8.91	317.74	4,556.5	572.6	-520.3	773.7	2.00	-2.00	0.00
4,680.0	8.11	317.74	4,596.0	577.0	-524.3	779.6	2.00	-2.00	0.00
4,720.0	7.31	317.74	4,635.7	581.0	-527.9	785.0	2.00	-2.00	0.00
4,760.0	6.51	317.74	4,675.4	584.5	-531.2	789.8	2.00	-2.00	0.00
4,800.0	5.71	317.74	4,715.2	587.7	-534.0	794.1	2.00	-2.00	0.00
4,840.0	4.91	317.74	4,755.0	590.4	-536.5	797.8	2.00	-2.00	0.00
4,880.0	4.11	317.74	4,794.9	592.8	-538.6	800.9	2.00	-2.00	0.00
4,920.0	3.31	317.74	4,834.8	594.7	-540.4	803.5	2.00	-2.00	0.00
4,960.0	2.51	317.74	4,874.7	596.2	-541.7	805.5	2.00	-2.00	0.00
5,000.0	1.71	317.74	4,914.7	597.3	-542.7	807.0	2.00	-2.00	0.00
5,040.0	0.91	317.74	4,954.7	597.9	-543.3	807.9	2.00	-2.00	0.00
5,080.0	0.11	317.74	4,994.7	598.2	-543.6	808.3	2.00	-2.00	0.00
5,085.3	0.00	0.00	5,000.0	598.2	-543.6	808.3	2.00	-2.00	0.00
TARGET BHL 660'FNL, 661'FWL									
5,120.0	0.00	0.00	5,034.7	598.2	-543.6	808.3	0.00	0.00	0.00
5,160.0	0.00	0.00	5,074.7	598.2	-543.6	808.3	0.00	0.00	0.00
5,200.0	0.00	0.00	5,114.7	598.2	-543.6	808.3	0.00	0.00	0.00
5,240.0	0.00	0.00	5,154.7	598.2	-543.6	808.3	0.00	0.00	0.00
5,280.0	0.00	0.00	5,194.7	598.2	-543.6	808.3	0.00	0.00	0.00
5,320.0	0.00	0.00	5,234.7	598.2	-543.6	808.3	0.00	0.00	0.00
5,360.0	0.00	0.00	5,274.7	598.2	-543.6	808.3	0.00	0.00	0.00
5,400.0	0.00	0.00	5,314.7	598.2	-543.6	808.3	0.00	0.00	0.00
5,440.0	0.00	0.00	5,354.7	598.2	-543.6	808.3	0.00	0.00	0.00
5,480.0	0.00	0.00	5,394.7	598.2	-543.6	808.3	0.00	0.00	0.00
5,520.0	0.00	0.00	5,434.7	598.2	-543.6	808.3	0.00	0.00	0.00
5,560.0	0.00	0.00	5,474.7	598.2	-543.6	808.3	0.00	0.00	0.00
5,600.0	0.00	0.00	5,514.7	598.2	-543.6	808.3	0.00	0.00	0.00
5,640.0	0.00	0.00	5,554.7	598.2	-543.6	808.3	0.00	0.00	0.00
5,680.0	0.00	0.00	5,594.7	598.2	-543.6	808.3	0.00	0.00	0.00
5,720.0	0.00	0.00	5,634.7	598.2	-543.6	808.3	0.00	0.00	0.00
5,760.0	0.00	0.00	5,674.7	598.2	-543.6	808.3	0.00	0.00	0.00
5,800.0	0.00	0.00	5,714.7	598.2	-543.6	808.3	0.00	0.00	0.00
5,840.0	0.00	0.00	5,754.7	598.2	-543.6	808.3	0.00	0.00	0.00
5,880.0	0.00	0.00	5,794.7	598.2	-543.6	808.3	0.00	0.00	0.00
5,920.0	0.00	0.00	5,834.7	598.2	-543.6	808.3	0.00	0.00	0.00
5,960.0	0.00	0.00	5,874.7	598.2	-543.6	808.3	0.00	0.00	0.00
6,000.0	0.00	0.00	5,914.7	598.2	-543.6	808.3	0.00	0.00	0.00
6,040.0	0.00	0.00	5,954.7	598.2	-543.6	808.3	0.00	0.00	0.00
6,080.0	0.00	0.00	5,994.7	598.2	-543.6	808.3	0.00	0.00	0.00
6,120.0	0.00	0.00	6,034.7	598.2	-543.6	808.3	0.00	0.00	0.00
6,160.0	0.00	0.00	6,074.7	598.2	-543.6	808.3	0.00	0.00	0.00
6,200.0	0.00	0.00	6,114.7	598.2	-543.6	808.3	0.00	0.00	0.00
6,240.0	0.00	0.00	6,154.7	598.2	-543.6	808.3	0.00	0.00	0.00

Database: Landmark
Company: Synergy Resources
Project: SEC.34-T4N-R68W
Site: Margil 11-34D Pad Sec.34-T4N-R68W
Well: Margil 11-34D
Wellbore: Wellbore #1
Design: Plan #1 (5-23-11)

Local Co-ordinate Reference: Well Margil 11-34D
TVD Reference: WELL @ 5117.0ft (Original Well Elev)
MD Reference: WELL @ 5117.0ft (Original Well Elev)
North Reference: True
Survey Calculation Method: Minimum Curvature

Planned Survey

Measured Depth (ft)	Inclination (°)	Azimuth (°)	Vertical Depth (ft)	+N/-S (ft)	+E/-W (ft)	Vertical Section (ft)	Dogleg Rate (°/100ft)	Build Rate (°/100ft)	Turn Rate (°/100ft)
6,280.0	0.00	0.00	6,194.7	598.2	-543.6	808.3	0.00	0.00	0.00
6,320.0	0.00	0.00	6,234.7	598.2	-543.6	808.3	0.00	0.00	0.00
6,360.0	0.00	0.00	6,274.7	598.2	-543.6	808.3	0.00	0.00	0.00
6,400.0	0.00	0.00	6,314.7	598.2	-543.6	808.3	0.00	0.00	0.00
6,440.0	0.00	0.00	6,354.7	598.2	-543.6	808.3	0.00	0.00	0.00
6,480.0	0.00	0.00	6,394.7	598.2	-543.6	808.3	0.00	0.00	0.00
6,520.0	0.00	0.00	6,434.7	598.2	-543.6	808.3	0.00	0.00	0.00
6,560.0	0.00	0.00	6,474.7	598.2	-543.6	808.3	0.00	0.00	0.00
6,600.0	0.00	0.00	6,514.7	598.2	-543.6	808.3	0.00	0.00	0.00
6,640.0	0.00	0.00	6,554.7	598.2	-543.6	808.3	0.00	0.00	0.00
6,680.0	0.00	0.00	6,594.7	598.2	-543.6	808.3	0.00	0.00	0.00
6,720.0	0.00	0.00	6,634.7	598.2	-543.6	808.3	0.00	0.00	0.00
6,760.0	0.00	0.00	6,674.7	598.2	-543.6	808.3	0.00	0.00	0.00
6,785.3	0.00	0.00	6,700.0	598.2	-543.6	808.3	0.00	0.00	0.00
LEGAL BOX 400' X 400' 660'FNL, 661'FWL									
6,800.0	0.00	0.00	6,714.7	598.2	-543.6	808.3	0.00	0.00	0.00
6,840.0	0.00	0.00	6,754.7	598.2	-543.6	808.3	0.00	0.00	0.00
6,880.0	0.00	0.00	6,794.7	598.2	-543.6	808.3	0.00	0.00	0.00
6,920.0	0.00	0.00	6,834.7	598.2	-543.6	808.3	0.00	0.00	0.00
6,960.0	0.00	0.00	6,874.7	598.2	-543.6	808.3	0.00	0.00	0.00
7,000.0	0.00	0.00	6,914.7	598.2	-543.6	808.3	0.00	0.00	0.00
7,040.0	0.00	0.00	6,954.7	598.2	-543.6	808.3	0.00	0.00	0.00
7,080.0	0.00	0.00	6,994.7	598.2	-543.6	808.3	0.00	0.00	0.00
7,120.0	0.00	0.00	7,034.7	598.2	-543.6	808.3	0.00	0.00	0.00
7,160.0	0.00	0.00	7,074.7	598.2	-543.6	808.3	0.00	0.00	0.00
7,200.0	0.00	0.00	7,114.7	598.2	-543.6	808.3	0.00	0.00	0.00
7,240.0	0.00	0.00	7,154.7	598.2	-543.6	808.3	0.00	0.00	0.00
7,280.0	0.00	0.00	7,194.7	598.2	-543.6	808.3	0.00	0.00	0.00
7,320.0	0.00	0.00	7,234.7	598.2	-543.6	808.3	0.00	0.00	0.00
7,360.0	0.00	0.00	7,274.7	598.2	-543.6	808.3	0.00	0.00	0.00
7,400.0	0.00	0.00	7,314.7	598.2	-543.6	808.3	0.00	0.00	0.00
7,440.0	0.00	0.00	7,354.7	598.2	-543.6	808.3	0.00	0.00	0.00
7,480.0	0.00	0.00	7,394.7	598.2	-543.6	808.3	0.00	0.00	0.00
7,520.0	0.00	0.00	7,434.7	598.2	-543.6	808.3	0.00	0.00	0.00
7,560.0	0.00	0.00	7,474.7	598.2	-543.6	808.3	0.00	0.00	0.00
7,600.0	0.00	0.00	7,514.7	598.2	-543.6	808.3	0.00	0.00	0.00
7,640.0	0.00	0.00	7,554.7	598.2	-543.6	808.3	0.00	0.00	0.00
7,680.0	0.00	0.00	7,594.7	598.2	-543.6	808.3	0.00	0.00	0.00
7,720.0	0.00	0.00	7,634.7	598.2	-543.6	808.3	0.00	0.00	0.00
7,760.0	0.00	0.00	7,674.7	598.2	-543.6	808.3	0.00	0.00	0.00
7,800.0	0.00	0.00	7,714.7	598.2	-543.6	808.3	0.00	0.00	0.00
7,840.0	0.00	0.00	7,754.7	598.2	-543.6	808.3	0.00	0.00	0.00
7,880.0	0.00	0.00	7,794.7	598.2	-543.6	808.3	0.00	0.00	0.00
7,905.3	0.00	0.00	7,820.0	598.2	-543.6	808.3	0.00	0.00	0.00

Database: Landmark
Company: Synergy Resources
Project: SEC.34-T4N-R68W
Site: Margil 11-34D Pad Sec.34-T4N-R68W
Well: Margil 11-34D
Wellbore: Wellbore #1
Design: Plan #1 (5-23-11)

Local Co-ordinate Reference: Well Margil 11-34D
TVD Reference: WELL @ 5117.0ft (Original Well Elev)
MD Reference: WELL @ 5117.0ft (Original Well Elev)
North Reference: True
Survey Calculation Method: Minimum Curvature

Targets

Target Name - hit/miss target - Shape	Dip Angle (°)	Dip Dir. (°)	TVD (ft)	+N/-S (ft)	+E/-W (ft)	Northing (ft)	Easting (ft)	Latitude	Longitude
TARGET BHL 660'FN - plan hits target center - Point	0.00	0.00	5,000.0	598.2	-543.6	1,343,510.81	3,140,540.56	40.275241	-104.996309
LEGAL BOX 400' X 400' - plan hits target center - Rectangle (sides W400.0 H400.0 D1,120.0)	0.00	0.00	6,700.0	598.2	-543.6	1,343,510.81	3,140,540.52	40.275241	-104.996309

Casing Points

Measured Depth (ft)	Vertical Depth (ft)	Name	Casing Diameter (")	Hole Diameter (")
640.0	640.0	8 5/8"	8-5/8	12-1/4



Directional

Synergy Resources

SEC.34-T4N-R68W

Margil 11-34D Pad Sec.34-T4N-R68W

Margil 11-34D

Wellbore #1

Plan #1 (5-23-11)

Anticollision Report

27 May, 2011

Company:	Synergy Resources	Local Co-ordinate Reference:	Well Margil 11-34D
Project:	SEC.34-T4N-R68W	TVD Reference:	WELL @ 5117.0ft (Original Well Elev)
Reference Site:	Margil 11-34D Pad Sec.34-T4N-R68W	MD Reference:	WELL @ 5117.0ft (Original Well Elev)
Site Error:	0.0ft	North Reference:	True
Reference Well:	Margil 11-34D	Survey Calculation Method:	Minimum Curvature
Well Error:	0.0ft	Output errors are at	2.00 sigma
Reference Wellbore	Wellbore #1	Database:	Landmark
Reference Design:	Plan #1 (5-23-11)	Offset TVD Reference:	Offset Datum

Reference	Plan #1 (5-23-11)		
Filter type:	NO GLOBAL FILTER: Using user defined selection & filtering criteria		
Interpolation Method:	Stations	Error Model:	ISCWSA
Depth Range:	Unlimited	Scan Method:	Closest Approach 3D
Results Limited by:	Maximum center-center distance of 10,000.0ft	Error Surface:	Elliptical Conic
Warning Levels Evaluated at:	2.00 Sigma		

Survey Tool Program	Date 5/27/2011			
From (ft)	To (ft)	Survey (Wellbore)	Tool Name	Description
0.0	7,905.3	Plan #1 (5-23-11) (Wellbore #1)	MWD	MWD - Standard

Summary						
Site Name	Reference Measured Depth (ft)	Offset Measured Depth (ft)	Distance Between Centres (ft)	Distance Between Ellipses (ft)	Separation Factor	Warning
Offset Well - Wellbore - Design						
Margil 11-34D Pad Sec.34-T4N-R68W						
Margil 21-34D - Wellbore #1 - Plan #1 (5-23-11)	800.0	800.0	20.1	16.7	5.947 CC, ES	
Margil 21-34D - Wellbore #1 - Plan #1 (5-23-11)	900.0	900.0	21.7	17.9	5.689 SF	

Offset Design												
Margil 11-34D Pad Sec.34-T4N-R68W - Margil 21-34D - Wellbore #1 - Plan #1 (5-23-11)												
Survey Program: 0-MWD												
Reference	Offset	Semi Major Axis			Distance			Warning				
Measured Depth (ft)	Vertical Depth (ft)	Measured Depth (ft)	Vertical Depth (ft)	Reference (ft)	Offset (ft)	Highside Toolface (°)	Offset Wellbore Centre +N/-S (ft)	+E/-W (ft)	Between Centres (ft)	Between Ellipses (ft)	Minimum Separation (ft)	Separation Factor
0.0	0.0	0.0	0.0	0.0	0.0	155.32	-18.2	8.4	20.1			
100.0	100.0	100.0	100.0	0.1	0.1	155.32	-18.2	8.4	20.1	19.8	0.22	89.206
200.0	200.0	200.0	200.0	0.3	0.3	155.32	-18.2	8.4	20.1	19.4	0.67	29.735
300.0	300.0	300.0	300.0	0.6	0.6	155.32	-18.2	8.4	20.1	18.9	1.12	17.841
400.0	400.0	400.0	400.0	0.8	0.8	155.32	-18.2	8.4	20.1	18.5	1.57	12.744
500.0	500.0	500.0	500.0	1.0	1.0	155.32	-18.2	8.4	20.1	18.0	2.02	9.912
600.0	600.0	600.0	600.0	1.2	1.2	155.32	-18.2	8.4	20.1	17.6	2.47	8.110
700.0	700.0	700.0	700.0	1.5	1.5	155.32	-18.2	8.4	20.1	17.1	2.92	6.862
800.0	800.0	800.0	800.0	1.7	1.7	155.32	-18.2	8.4	20.1	16.7	3.37	5.947 CC, ES
900.0	900.0	900.0	900.0	1.9	1.9	-163.80	-18.2	8.4	21.7	17.9	3.82	5.689 SF
1,000.0	999.8	999.8	999.8	2.1	2.1	-166.90	-18.2	8.4	26.8	22.5	4.26	6.286
1,100.0	1,099.5	1,099.6	1,099.5	2.4	2.4	-172.89	-17.1	9.7	35.2	30.5	4.70	7.486
1,200.0	1,198.7	1,198.7	1,198.5	2.6	2.6	179.00	-13.8	13.7	47.3	42.2	5.12	9.233
1,300.0	1,297.5	1,296.7	1,296.2	2.9	2.8	171.51	-8.4	20.2	64.0	58.5	5.56	11.516
1,400.0	1,395.6	1,393.4	1,392.2	3.2	3.0	165.44	-1.0	29.1	85.6	79.6	6.01	14.239
1,440.1	1,434.7	1,431.7	1,430.1	3.4	3.1	163.40	2.5	33.4	95.6	89.4	6.20	15.419
1,500.0	1,493.2	1,488.6	1,486.3	3.6	3.3	160.71	8.3	40.4	111.5	105.0	6.51	17.139
1,600.0	1,590.7	1,582.6	1,578.6	4.0	3.6	156.65	19.4	53.8	139.5	132.4	7.05	19.785
1,700.0	1,688.2	1,675.3	1,669.0	4.4	3.9	153.02	32.3	69.4	169.3	161.7	7.63	22.189
1,800.0	1,785.7	1,767.2	1,758.1	4.8	4.3	149.73	46.9	87.0	201.2	193.0	8.25	24.381
1,900.0	1,883.3	1,861.2	1,848.9	5.2	4.7	147.09	62.3	105.6	234.1	225.2	8.91	26.283
2,000.0	1,980.8	1,955.2	1,939.7	5.7	5.1	145.10	77.7	124.2	267.3	257.7	9.58	27.908
2,100.0	2,078.3	2,049.1	2,030.5	6.1	5.5	143.55	93.1	142.8	300.7	290.4	10.26	29.319
2,200.0	2,175.8	2,143.1	2,121.3	6.6	5.9	142.31	108.5	161.4	334.3	323.3	10.95	30.536
2,300.0	2,273.3	2,237.1	2,212.1	7.0	6.4	141.29	124.0	180.1	368.0	356.3	11.65	31.594

CC - Min centre to center distance or convergent point, SF - min separation factor, ES - min ellipse separation

Company: Synergy Resources
Project: SEC.34-T4N-R68W
Reference Site: Margil 11-34D Pad Sec.34-T4N-R68W
Site Error: 0.0ft
Reference Well: Margil 11-34D
Well Error: 0.0ft
Reference Wellbore: Wellbore #1
Reference Design: Plan #1 (5-23-11)

Local Co-ordinate Reference: Well Margil 11-34D
TVD Reference: WELL @ 5117.0ft (Original Well Elev)
MD Reference: WELL @ 5117.0ft (Original Well Elev)
North Reference: True
Survey Calculation Method: Minimum Curvature
Output errors are at 2.00 sigma
Database: Landmark
Offset TVD Reference: Offset Datum

Offset Design Margil 11-34D Pad Sec.34-T4N-R68W - Margil 21-34D - Wellbore #1 - Plan #1 (5-23-11)													Offset Site Error: 0.0 ft	
Survey Program: 0-MWD													Offset Well Error: 0.0 ft	
Reference		Offset		Semi Major Axis			Distance						Warning	
Measured Depth (ft)	Vertical Depth (ft)	Measured Depth (ft)	Vertical Depth (ft)	Reference (ft)	Offset (ft)	Highside Toolface (°)	Offset Wellbore Centre +N/-S (ft)	+E/-W (ft)	Between Centres (ft)	Between Ellipses (ft)	Minimum Separation (ft)	Separation Factor		
2,400.0	2,370.8	2,331.0	2,302.9	7.5	6.9	140.44	139.4	198.7	401.8	389.4	12.35	32.520		
2,500.0	2,468.3	2,425.0	2,393.8	7.9	7.3	139.73	154.8	217.3	435.6	422.5	13.07	33.336		
2,600.0	2,565.9	2,519.0	2,484.6	8.4	7.8	139.12	170.2	235.9	469.5	455.7	13.78	34.059		
2,700.0	2,663.4	2,613.0	2,575.4	8.9	8.3	138.59	185.6	254.5	503.4	488.9	14.51	34.702		
2,800.0	2,760.9	2,706.9	2,666.2	9.3	8.8	138.12	201.1	273.2	537.4	522.2	15.23	35.279		
2,900.0	2,858.4	2,800.9	2,757.0	9.8	9.2	137.71	216.5	291.8	571.4	555.4	15.96	35.797		
3,000.0	2,955.9	2,894.9	2,847.8	10.3	9.7	137.35	231.9	310.4	605.4	588.7	16.69	36.265		
3,100.0	3,053.4	2,988.8	2,938.6	10.7	10.2	137.03	247.3	329.0	639.5	622.0	17.43	36.690		
3,200.0	3,150.9	3,082.8	3,029.4	11.2	10.7	136.74	262.7	347.6	673.5	655.3	18.17	37.077		
3,300.0	3,248.5	3,176.8	3,120.2	11.7	11.2	136.47	278.2	366.3	707.6	688.7	18.90	37.430		
3,400.0	3,346.0	3,270.7	3,211.0	12.1	11.7	136.23	293.6	384.9	741.7	722.0	19.64	37.755		
3,500.0	3,443.5	3,364.7	3,301.8	12.6	12.2	136.02	309.0	403.5	775.7	755.4	20.39	38.053		
3,600.0	3,541.0	3,458.7	3,392.6	13.1	12.7	135.82	324.4	422.1	809.8	788.7	21.13	38.329		
3,700.0	3,638.5	3,552.7	3,483.4	13.6	13.2	135.63	339.8	440.7	844.0	822.1	21.87	38.584		
3,800.0	3,736.0	3,646.6	3,574.2	14.0	13.6	135.46	355.3	459.4	878.1	855.5	22.62	38.821		
3,900.0	3,833.5	3,740.6	3,665.1	14.5	14.1	135.31	370.7	478.0	912.2	888.8	23.37	39.041		
4,000.0	3,931.1	3,834.6	3,755.9	15.0	14.6	135.16	386.1	496.6	946.3	922.2	24.11	39.246		
4,100.0	4,028.6	3,928.5	3,846.7	15.4	15.1	135.03	401.5	515.2	980.5	955.6	24.86	39.437		
4,200.0	4,126.1	4,022.5	3,937.5	15.9	15.6	134.90	416.9	533.9	1,014.6	989.0	25.61	39.617		
4,300.0	4,223.6	4,116.5	4,028.3	16.4	16.1	134.78	432.4	552.5	1,048.7	1,022.4	26.36	39.785		
4,400.0	4,321.1	4,210.4	4,119.1	16.9	16.6	134.67	447.8	571.1	1,082.9	1,055.8	27.11	39.943		
4,445.3	4,365.3	4,253.0	4,160.2	17.1	16.9	134.62	454.7	579.5	1,098.3	1,070.9	27.45	40.012		
4,500.0	4,418.7	4,304.5	4,210.0	17.3	17.1	134.83	463.2	589.7	1,116.7	1,088.8	27.89	40.034		
4,600.0	4,517.0	4,399.3	4,301.5	17.6	17.6	135.06	478.8	608.5	1,148.4	1,119.8	28.64	40.094		
4,700.0	4,615.8	4,494.6	4,393.7	17.9	18.1	135.15	494.4	627.4	1,177.8	1,148.4	29.36	40.122		
4,800.0	4,715.2	4,590.4	4,486.3	18.2	18.7	135.10	510.1	646.4	1,204.9	1,174.9	30.03	40.128		
4,900.0	4,814.8	4,686.6	4,579.2	18.4	19.2	134.91	525.9	665.4	1,229.7	1,199.0	30.65	40.116		
5,000.0	4,914.7	4,783.1	4,672.5	18.5	19.7	134.60	541.7	684.6	1,252.2	1,220.9	31.23	40.093		
5,085.3	5,000.0	4,865.5	4,752.1	18.6	20.1	91.98	555.3	700.9	1,269.6	1,237.9	31.69	40.068		
5,100.0	5,014.7	4,881.2	4,767.3	18.6	20.2	91.85	557.8	704.0	1,272.5	1,240.7	31.77	40.059		
5,200.0	5,114.7	5,029.0	4,911.1	18.8	20.8	90.84	579.6	730.3	1,290.1	1,257.8	32.35	39.884		
5,300.0	5,214.7	5,180.1	5,059.7	18.9	21.3	90.06	596.9	751.2	1,304.0	1,271.1	32.87	39.665		
5,400.0	5,314.7	5,333.7	5,212.0	19.0	21.7	89.51	609.4	766.2	1,313.8	1,280.5	33.35	39.396		
5,500.0	5,414.7	5,489.0	5,366.9	19.2	22.0	89.20	616.6	775.0	1,319.6	1,285.8	33.77	39.070		
5,600.0	5,514.7	5,636.9	5,514.7	19.3	22.1	89.11	618.6	777.4	1,321.1	1,287.0	34.14	38.700		
5,700.0	5,614.7	5,736.9	5,614.7	19.4	22.3	89.11	618.6	777.4	1,321.1	1,286.7	34.43	38.371		
5,800.0	5,714.7	5,836.9	5,714.7	19.6	22.4	89.11	618.6	777.4	1,321.1	1,286.4	34.73	38.038		
5,900.0	5,814.7	5,936.9	5,814.7	19.7	22.5	89.11	618.6	777.4	1,321.1	1,286.1	35.04	37.707		
6,000.0	5,914.7	6,036.9	5,914.7	19.9	22.6	89.11	618.6	777.4	1,321.1	1,285.8	35.34	37.379		
6,100.0	6,014.7	6,136.9	6,014.7	20.0	22.7	89.11	618.6	777.4	1,321.1	1,285.5	35.65	37.053		
6,200.0	6,114.7	6,236.9	6,114.7	20.2	22.9	89.11	618.6	777.4	1,321.1	1,285.1	35.97	36.730		
6,300.0	6,214.7	6,336.9	6,214.7	20.3	23.0	89.11	618.6	777.4	1,321.1	1,284.8	36.28	36.410		
6,400.0	6,314.7	6,436.9	6,314.7	20.5	23.1	89.11	618.6	777.4	1,321.1	1,284.5	36.60	36.092		
6,500.0	6,414.7	6,536.9	6,414.7	20.6	23.3	89.11	618.6	777.4	1,321.1	1,284.2	36.93	35.777		
6,600.0	6,514.7	6,636.9	6,514.7	20.8	23.4	89.11	618.6	777.4	1,321.1	1,283.9	37.25	35.466		
6,700.0	6,614.7	6,736.9	6,614.7	20.9	23.5	89.11	618.6	777.4	1,321.1	1,283.5	37.58	35.157		
6,800.0	6,714.7	6,836.9	6,714.7	21.1	23.7	89.11	618.6	777.4	1,321.1	1,283.2	37.91	34.851		
6,900.0	6,814.7	6,936.9	6,814.7	21.2	23.8	89.11	618.6	777.4	1,321.1	1,282.9	38.24	34.549		
7,000.0	6,914.7	7,036.9	6,914.7	21.4	23.9	89.11	618.6	777.4	1,321.1	1,282.5	38.57	34.249		
7,100.0	7,014.7	7,136.9	7,014.7	21.5	24.1	89.11	618.6	777.4	1,321.1	1,282.2	38.91	33.953		
7,200.0	7,114.7	7,236.9	7,114.7	21.7	24.2	89.11	618.6	777.4	1,321.1	1,281.9	39.25	33.659		
7,300.0	7,214.7	7,336.9	7,214.7	21.8	24.4	89.11	618.6	777.4	1,321.1	1,281.5	39.59	33.369		

CC - Min centre to center distance or convergent point, SF - min separation factor, ES - min ellipse separation

Company: Synergy Resources
Project: SEC.34-T4N-R68W
Reference Site: Margil 11-34D Pad Sec.34-T4N-R68W
Site Error: 0.0ft
Reference Well: Margil 11-34D
Well Error: 0.0ft
Reference Wellbore: Wellbore #1
Reference Design: Plan #1 (5-23-11)

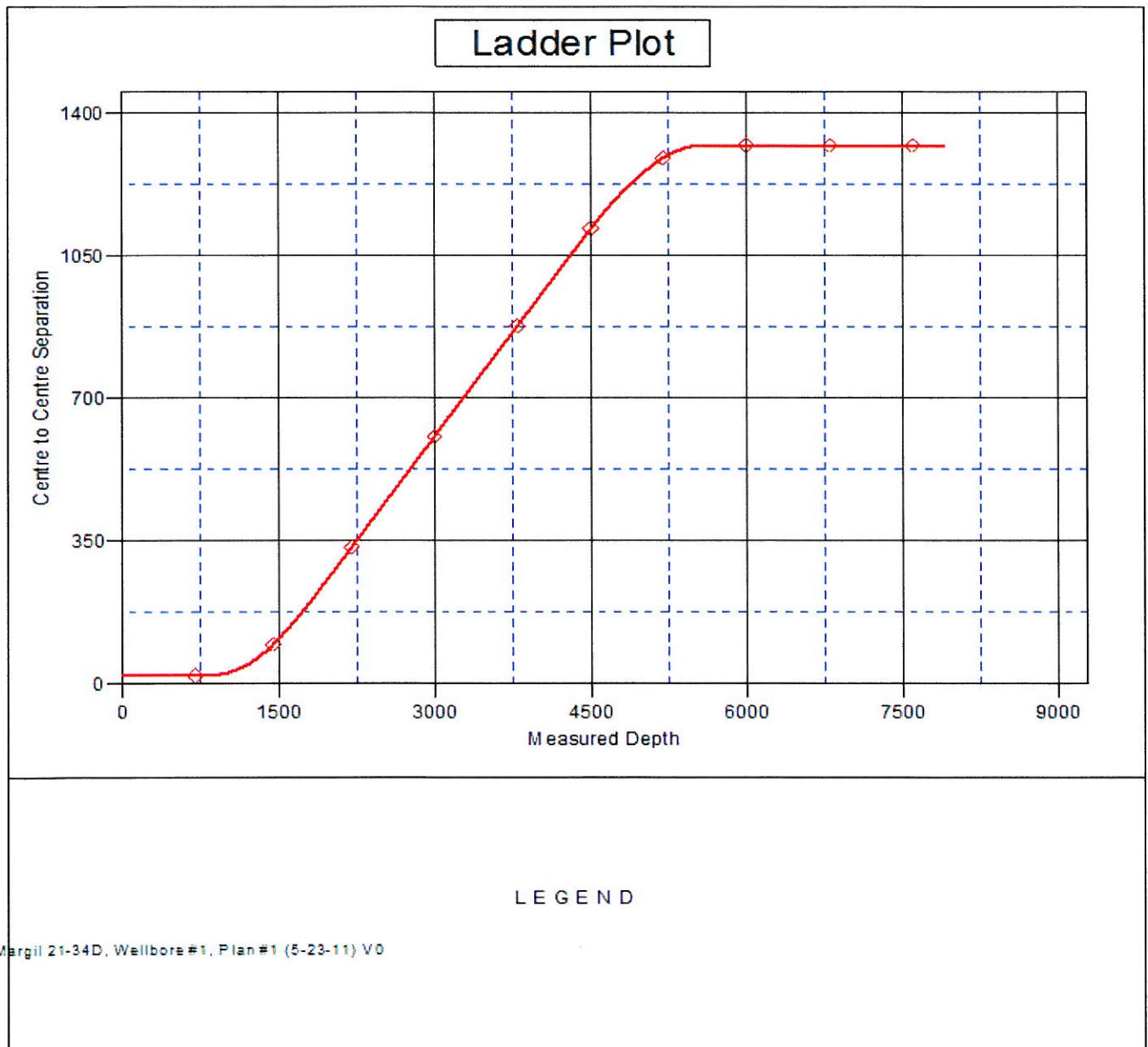
Local Co-ordinate Reference: Well Margil 11-34D
TVD Reference: WELL @ 5117.0ft (Original Well Elev)
MD Reference: WELL @ 5117.0ft (Original Well Elev)
North Reference: True
Survey Calculation Method: Minimum Curvature
Output errors are at: 2.00 sigma
Database: Landmark
Offset TVD Reference: Offset Datum

Offset Design Margil 11-34D Pad Sec.34-T4N-R68W - Margil 21-34D - Wellbore #1 - Plan #1 (5-23-11)													Offset Site Error:	0.0 ft
Survey Program: 0-MWD													Offset Well Error:	0.0 ft
Reference		Offset		Semi Major Axis			Distance							Warning
Measured Depth (ft)	Vertical Depth (ft)	Measured Depth (ft)	Vertical Depth (ft)	Reference (ft)	Offset (ft)	Highside Toolface (°)	Offset Wellbore Centre +N/-S (ft)	+E/-W (ft)	Between Centres (ft)	Between Ellipses (ft)	Minimum Separation (ft)	Separation Factor		
7,400.0	7,314.7	7,436.9	7,314.7	22.0	24.5	89.11	618.6	777.4	1,321.1	1,281.2	39.93	33.082		
7,500.0	7,414.7	7,536.9	7,414.7	22.2	24.6	89.11	618.6	777.4	1,321.1	1,280.8	40.28	32.798		
7,600.0	7,514.7	7,636.9	7,514.7	22.3	24.8	89.11	618.6	777.4	1,321.1	1,280.5	40.63	32.518		
7,700.0	7,614.7	7,736.9	7,614.7	22.5	24.9	89.11	618.6	777.4	1,321.1	1,280.1	40.98	32.241		
7,800.0	7,714.7	7,836.9	7,714.7	22.7	25.1	89.11	618.6	777.4	1,321.1	1,279.8	41.33	31.966		
7,905.3	7,820.0	7,942.2	7,820.0	22.8	25.2	89.11	618.6	777.4	1,321.1	1,279.4	41.70	31.681		

Company: Synergy Resources
Project: SEC.34-T4N-R68W
Reference Site: Margil 11-34D Pad Sec.34-T4N-R68W
Site Error: 0.0ft
Reference Well: Margil 11-34D
Well Error: 0.0ft
Reference Wellbore: Wellbore #1
Reference Design: Plan #1 (5-23-11)

Local Co-ordinate Reference: Well Margil 11-34D
TVD Reference: WELL @ 5117.0ft (Original Well Elev)
MD Reference: WELL @ 5117.0ft (Original Well Elev)
North Reference: True
Survey Calculation Method: Minimum Curvature
Output errors are at 2.00 sigma
Database: Landmark
Offset TVD Reference: Offset Datum

Reference Depths are relative to WELL @ 5117.0ft (Original Well Elev) Coordinates are relative to: Margil 11-34D
 Offset Depths are relative to Offset Datum
 Central Meridian is -105.500000 °
 Coordinate System is US State Plane 1983, Colorado Northern Zone
 Grid Convergence at Surface is: 0.33°



Company: Synergy Resources
Project: SEC.34-T4N-R68W
Reference Site: Margil 11-34D Pad Sec.34-T4N-R68W
Site Error: 0.0ft
Reference Well: Margil 11-34D
Well Error: 0.0ft
Reference Wellbore: Wellbore #1
Reference Design: Plan #1 (5-23-11)

Local Co-ordinate Reference: Well Margil 11-34D
TVD Reference: WELL @ 5117.0ft (Original Well Elev)
MD Reference: WELL @ 5117.0ft (Original Well Elev)
North Reference: True
Survey Calculation Method: Minimum Curvature
Output errors are at 2.00 sigma
Database: Landmark
Offset TVD Reference: Offset Datum

Reference Depths are relative to WELL @ 5117.0ft (Original Well Elev) Coordinates are relative to: Margil 11-34D

Offset Depths are relative to Offset Datum

Central Meridian is -105.500000 °

Coordinate System is US State Plane 1983, Colorado Northern Zone

Grid Convergence at Surface is: 0.33°

