

Well Name: **Wildflower 33-27**

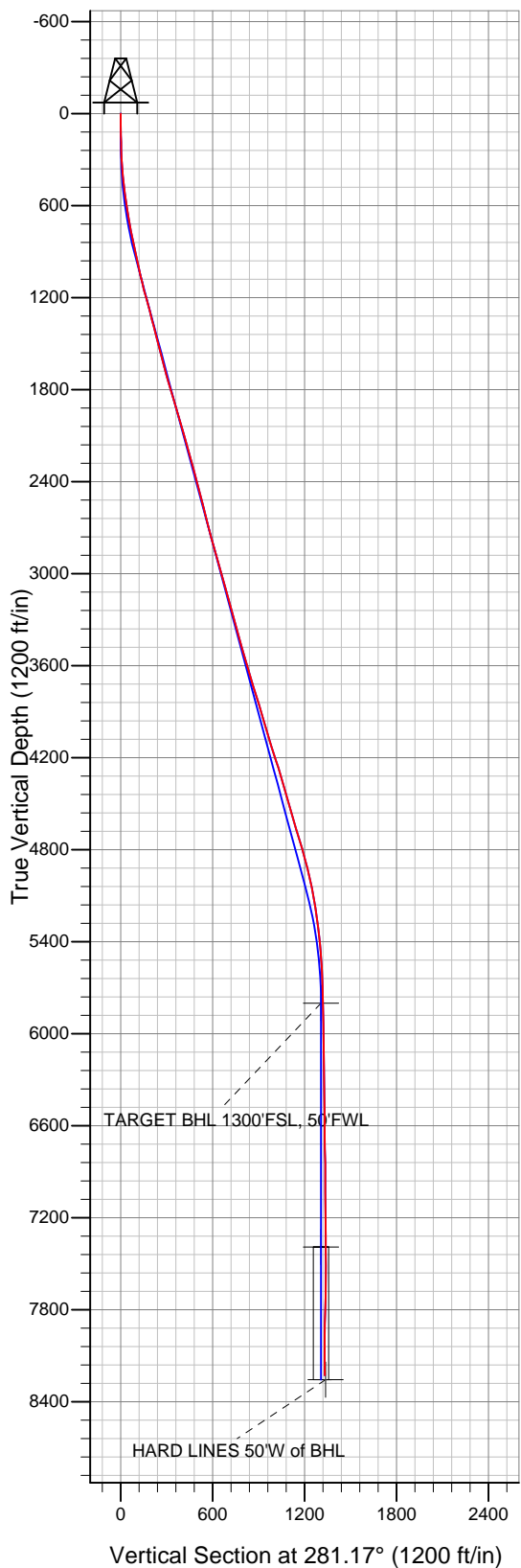
Surface Location: Wildflower 19-27 Pad Sec.27-T2N-R68W
 North American Datum 1983 US State Plane 1983 Colorado Northern Zone

Ground Elevation: 5008.0

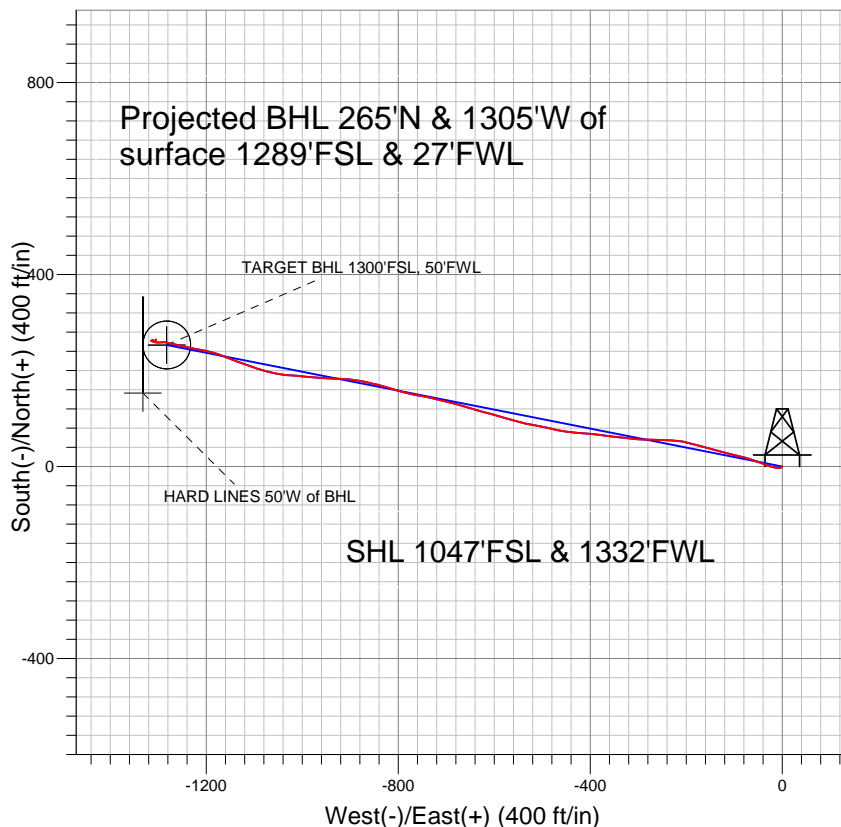
+N/-S	+E/-W	Northing	Easting	Latitude	Longitude
0.0	0.0	1281552.72	3141524.40	40.105146	-104.994050

Original Well Elev WELL @ 5023.0ft (Original Well Elev)

Slot



Anadarko, Weld County CO



LEGEND

- Wildflower 33-27, Wellbore #1, Plan #1 (1-17-11) V0
- Wellbore #1
- Survey #1

Final Survey Plot

Projected Final Survey -
 8400'MD & 8228'TVD @ 1331°VS
 0.4 deg Inc 303.9 deg AZ

Project: SEC.27-T2N-R68W
 Site: Wildflower 19-27 Pad Sec.27-T2N-R68W
 Well: Wildflower 33-27
 Plan: Wellbore #1



Directional

Anadarko, Weld County CO

SEC.27-T2N-R68W

Wildflower 19-27 Pad Sec.27-T2N-R68W

Wildflower 33-27

Wellbore #1

Survey: Survey #1

Standard Survey Report

06 April, 2011

Company:	Anadarko, Weld County CO	Local Co-ordinate Reference:	Well Wildflower 33-27
Project:	SEC.27-T2N-R68W	TVD Reference:	WELL @ 5023.0ft (Original Well Elev)
Site:	Wildflower 19-27 Pad Sec.27-T2N-R68W	MD Reference:	WELL @ 5023.0ft (Original Well Elev)
Well:	Wildflower 33-27	North Reference:	True
Wellbore:	Wellbore #1	Survey Calculation Method:	Minimum Curvature
Design:	Wellbore #1	Database:	Landmark

Project	SEC.27-T2N-R68W, Weld County, Colorado		
Map System:	US State Plane 1983	System Datum:	Mean Sea Level
Geo Datum:	North American Datum 1983		Using Well Reference Point
Map Zone:	Colorado Northern Zone		Using geodetic scale factor

Site		Wildflower 19-27 Pad Sec.27-T2N-R68W			
Site Position:		Northing:	1,281,592.81 ft	Latitude:	40.105256
From:	Lat/Long	Easting:	3,141,524.17 ft	Longitude:	-104.994050
Position Uncertainty:	0.0 ft	Slot Radius:	"	Grid Convergence:	0.33 °

Well	Wildflower 33-27					
Well Position	+N/-S	0.0 ft	Northing:	1,281,552.72 ft	Latitude:	40.105146
	+E/-W	0.0 ft	Easting:	3,141,524.40 ft	Longitude:	-104.994050
Position Uncertainty		0.0 ft	Wellhead Elevation:	ft	Ground Level:	5,008.0 ft

Wellbore	Wellbore #1				
Magnetics	Model Name	Sample Date	Declination (°)	Dip Angle (°)	Field Strength (nT)
	IGRF2010	3/30/2011	8.99	66.78	52,972

Design	Wellbore #1				
Audit Notes:					
Version:	1.0	Phase:	ACTUAL	Tie On Depth:	0.0
Vertical Section:	Depth From (TVD) (ft)	+N/-S (ft)	+E/-W (ft)	Direction (°)	
	0.0	0.0	0.0	281.17	

Survey Program	Date	4/6/2011			
From (ft)	To (ft)	Survey (Wellbore)	Tool Name	Description	
142.0	8,400.0	Survey #1 (Wellbore #1)	MWD	MWD - Standard	

Survey										
Measured Depth (ft)	Inclination (°)	Azimuth (°)	Vertical Depth (ft)	+N/-S (ft)	+E/-W (ft)	Vertical Section (ft)	Dogleg Rate (°/100ft)	Build Rate (°/100ft)	Turn Rate (°/100ft)	
0.0	0.00	0.00	0.0	0.0	0.0	0.0	0.00	0.00	0.00	
142.0	1.20	227.20	142.0	-1.0	-1.1	0.9	0.85	0.85	0.00	
231.0	2.20	243.70	230.9	-2.4	-3.3	2.8	1.24	1.12	18.54	
323.0	3.70	270.80	322.8	-3.1	-7.9	7.1	2.18	1.63	29.46	
415.0	5.60	281.80	414.5	-2.2	-15.2	14.5	2.27	2.07	11.96	
507.0	7.50	287.20	505.9	0.5	-25.4	25.0	2.17	2.07	5.87	
599.0	8.70	290.80	597.0	4.8	-37.6	37.8	1.42	1.30	3.91	
691.0	9.90	290.40	687.8	10.0	-51.5	52.5	1.31	1.30	-0.43	
772.0	11.50	287.70	767.4	14.9	-65.7	67.4	2.07	1.98	-3.33	
830.0	11.20	287.50	824.2	18.3	-76.6	78.7	0.52	-0.52	-0.34	
925.0	12.10	284.10	917.3	23.5	-95.1	97.8	1.19	0.95	-3.58	
1,020.0	12.60	281.20	1,010.1	28.0	-114.9	118.1	0.84	0.53	-3.05	
1,115.0	13.80	284.80	1,102.6	32.9	-136.0	139.8	1.53	1.26	3.79	

Company:	Anadarko, Weld County CO	Local Co-ordinate Reference:	Well Wildflower 33-27
Project:	SEC.27-T2N-R68W	TVD Reference:	WELL @ 5023.0ft (Original Well Elev)
Site:	Wildflower 19-27 Pad Sec.27-T2N-R68W	MD Reference:	WELL @ 5023.0ft (Original Well Elev)
Well:	Wildflower 33-27	North Reference:	True
Wellbore:	Wellbore #1	Survey Calculation Method:	Minimum Curvature
Design:	Wellbore #1	Database:	Landmark

Survey

Measured Depth (ft)	Inclination (°)	Azimuth (°)	Vertical Depth (ft)	+N/-S (ft)	+E/-W (ft)	Vertical Section (ft)	Dogleg Rate (°/100ft)	Build Rate (°/100ft)	Turn Rate (°/100ft)
1,211.0	15.20	286.40	1,195.5	39.3	-159.2	163.8	1.52	1.46	1.67
1,306.0	15.50	286.30	1,287.1	46.4	-183.3	188.8	0.32	0.32	-0.11
1,401.0	14.40	279.00	1,378.9	51.8	-207.1	213.3	2.29	-1.16	-7.68
1,496.0	14.30	273.00	1,471.0	54.3	-230.5	236.7	1.57	-0.11	-6.32
1,591.0	15.10	272.10	1,562.9	55.4	-254.6	260.5	0.88	0.84	-0.95
1,686.0	14.60	270.10	1,654.7	55.8	-278.9	284.5	0.75	-0.53	-2.11
1,782.0	16.10	275.10	1,747.3	57.0	-304.3	309.6	2.08	1.56	5.21
1,877.0	16.80	276.50	1,838.4	59.8	-331.1	336.4	0.85	0.74	1.47
1,972.0	16.90	277.60	1,929.3	63.1	-358.4	363.8	0.35	0.11	1.16
2,069.0	16.60	276.10	2,022.2	66.5	-386.1	391.7	0.54	-0.31	-1.55
2,164.0	15.60	274.10	2,113.4	68.8	-412.4	417.9	1.20	-1.05	-2.11
2,260.0	16.40	276.80	2,205.7	71.4	-438.7	444.2	1.14	0.83	2.81
2,355.0	15.00	280.60	2,297.2	75.2	-464.1	469.9	1.83	-1.47	4.00
2,450.0	14.40	282.70	2,389.1	80.1	-487.7	494.0	0.84	-0.63	2.21
2,545.0	14.20	280.70	2,481.1	84.8	-510.7	517.5	0.56	-0.21	-2.11
2,641.0	14.50	282.40	2,574.1	89.6	-534.0	541.2	0.54	0.31	1.77
2,736.0	14.60	285.20	2,666.1	95.3	-557.2	565.1	0.75	0.11	2.95
2,831.0	15.20	286.70	2,757.9	102.0	-580.7	589.4	0.75	0.63	1.58
2,926.0	15.40	285.30	2,849.5	108.9	-604.8	614.4	0.44	0.21	-1.47
3,021.0	15.50	284.80	2,941.1	115.5	-629.2	639.7	0.18	0.11	-0.53
3,116.0	15.70	286.80	3,032.6	122.5	-653.8	665.1	0.60	0.21	2.11
3,212.0	16.00	285.20	3,125.0	129.7	-679.0	691.2	0.55	0.31	-1.67
3,307.0	16.10	284.40	3,216.2	136.4	-704.4	717.4	0.26	0.11	-0.84
3,402.0	14.90	283.10	3,307.8	142.4	-729.0	742.8	1.31	-1.26	-1.37
3,497.0	15.30	279.50	3,399.5	147.3	-753.3	767.5	1.07	0.42	-3.79
3,592.0	15.80	283.20	3,491.0	152.3	-778.2	793.0	1.17	0.53	3.89
3,687.0	16.30	287.40	3,582.3	159.2	-803.6	819.2	1.33	0.53	4.42
3,782.0	16.40	285.10	3,673.5	166.7	-829.2	845.8	0.69	0.11	-2.42
3,877.0	17.50	283.40	3,764.4	173.5	-856.1	873.5	1.27	1.16	-1.79
3,972.0	17.00	279.10	3,855.1	179.0	-883.7	901.6	1.44	-0.53	-4.53
4,068.0	17.00	273.60	3,946.9	182.1	-911.5	929.6	1.67	0.00	-5.73
4,163.0	16.20	271.60	4,038.0	183.4	-938.6	956.4	1.03	-0.84	-2.11
4,258.0	17.70	274.70	4,128.8	184.9	-966.3	983.8	1.84	1.58	3.26
4,353.0	18.50	275.80	4,219.1	187.6	-995.7	1,013.2	0.92	0.84	1.16
4,448.0	17.00	273.10	4,309.6	189.9	-1,024.5	1,041.9	1.80	-1.58	-2.84
4,544.0	15.30	283.00	4,401.8	193.5	-1,050.9	1,068.5	3.36	-1.77	10.31
4,639.0	16.20	282.40	4,493.3	199.2	-1,076.1	1,094.3	0.96	0.95	-0.63
4,734.0	16.20	288.40	4,584.5	206.2	-1,101.6	1,120.7	1.76	0.00	6.32
4,829.0	17.70	291.90	4,675.4	215.8	-1,127.6	1,148.0	1.91	1.58	3.68
4,924.0	16.70	291.70	4,766.1	226.2	-1,153.6	1,175.6	1.05	-1.05	-0.21
5,019.0	15.20	286.80	4,857.5	234.9	-1,178.2	1,201.4	2.12	-1.58	-5.16
5,114.0	13.50	282.70	4,949.5	240.9	-1,201.0	1,224.9	2.08	-1.79	-4.32
5,209.0	11.10	279.60	5,042.3	244.9	-1,220.8	1,245.1	2.62	-2.53	-3.26
5,304.0	10.50	281.60	5,135.6	248.1	-1,238.3	1,262.9	0.74	-0.63	2.11
5,399.0	7.90	283.20	5,229.4	251.4	-1,253.2	1,278.1	2.75	-2.74	1.68
5,494.0	6.50	285.70	5,323.6	254.3	-1,264.7	1,290.0	1.51	-1.47	2.63
5,590.0	5.50	281.70	5,419.1	256.7	-1,274.4	1,300.0	1.13	-1.04	-4.17
5,685.0	4.50	281.30	5,513.8	258.4	-1,282.5	1,308.3	1.05	-1.05	-0.42
5,780.0	2.80	265.70	5,608.6	258.9	-1,288.5	1,314.3	2.06	-1.79	-16.42
5,875.0	1.20	267.00	5,703.5	258.7	-1,291.8	1,317.5	1.68	-1.68	1.37
5,970.0	1.10	271.50	5,798.5	258.7	-1,293.7	1,319.3	0.14	-0.11	4.74
5,971.3	1.10	271.26	5,799.8	258.7	-1,293.7	1,319.3	0.36	0.06	-18.34
TARGET BHL 1300'FSL, 50'FWL									
6,065.0	1.20	255.30	5,893.5	258.4	-1,295.6	1,321.1	0.36	0.11	-17.03

Company:	Anadarko, Weld County CO	Local Co-ordinate Reference:	Well Wildflower 33-27
Project:	SEC.27-T2N-R68W	TVD Reference:	WELL @ 5023.0ft (Original Well Elev)
Site:	Wildflower 19-27 Pad Sec.27-T2N-R68W	MD Reference:	WELL @ 5023.0ft (Original Well Elev)
Well:	Wildflower 33-27	North Reference:	True
Wellbore:	Wellbore #1	Survey Calculation Method:	Minimum Curvature
Design:	Wellbore #1	Database:	Landmark

Survey

Measured Depth (ft)	Inclination (°)	Azimuth (°)	Vertical Depth (ft)	+N/-S (ft)	+E/-W (ft)	Vertical Section (ft)	Dogleg Rate (°/100ft)	Build Rate (°/100ft)	Turn Rate (°/100ft)
6,161.0	0.90	276.70	5,989.4	258.3	-1,297.3	1,322.8	0.51	-0.31	22.29
6,256.0	0.70	261.20	6,084.4	258.3	-1,298.6	1,324.1	0.31	-0.21	-16.32
6,351.0	0.90	269.80	6,179.4	258.2	-1,300.0	1,325.3	0.24	0.21	9.05
6,446.0	0.70	276.50	6,274.4	258.2	-1,301.3	1,326.6	0.23	-0.21	7.05
6,541.0	0.70	276.20	6,369.4	258.4	-1,302.4	1,327.8	0.00	0.00	-0.32
6,636.0	0.70	272.90	6,464.4	258.5	-1,303.6	1,329.0	0.04	0.00	-3.47
6,732.0	0.70	285.60	6,560.4	258.6	-1,304.7	1,330.1	0.16	0.00	13.23
6,827.0	0.60	277.00	6,655.4	258.9	-1,305.8	1,331.2	0.15	-0.11	-9.05
6,922.0	0.80	280.00	6,750.4	259.0	-1,306.9	1,332.4	0.21	0.21	3.16
7,017.0	0.80	283.40	6,845.4	259.3	-1,308.2	1,333.7	0.05	0.00	3.58
7,112.0	0.80	2.20	6,940.4	260.1	-1,308.9	1,334.4	1.07	0.00	82.95
7,207.0	0.80	349.80	7,035.4	261.4	-1,308.9	1,334.8	0.18	0.00	-13.05
7,302.0	0.70	315.20	7,130.4	262.5	-1,309.5	1,335.5	0.48	-0.11	-36.42
7,398.0	1.00	292.60	7,226.3	263.2	-1,310.7	1,336.8	0.46	0.31	-23.54
7,493.0	0.20	85.00	7,321.3	263.6	-1,311.3	1,337.5	1.24	-0.84	160.42
7,561.7	0.54	210.52	7,390.0	263.3	-1,311.3	1,337.5	0.99	0.50	182.83
TARGET CIRCLE 1300'FSL & 50'FWL									
7,588.0	0.80	215.00	7,416.3	263.0	-1,311.5	1,337.6	0.99	0.97	17.00
7,683.0	2.00	260.00	7,511.3	262.2	-1,313.5	1,339.4	1.62	1.26	47.37
7,778.0	1.70	117.80	7,606.3	261.3	-1,313.9	1,339.6	3.69	-0.32	-149.68
7,874.0	1.70	92.50	7,702.2	260.5	-1,311.2	1,336.8	0.78	0.00	-26.35
7,970.0	1.70	74.00	7,798.2	260.9	-1,308.4	1,334.1	0.57	0.00	-19.27
8,064.0	1.40	50.20	7,892.2	262.0	-1,306.2	1,332.2	0.75	-0.32	-25.32
8,159.0	0.80	50.70	7,987.2	263.1	-1,304.8	1,331.0	0.63	-0.63	0.53
8,255.0	0.40	13.40	8,083.1	263.9	-1,304.2	1,330.6	0.56	-0.42	-38.85
8,351.0	0.40	303.90	8,179.1	264.4	-1,304.4	1,330.9	0.47	0.00	-72.40
8,400.0	0.40	303.90	8,228.1	264.6	-1,304.7	1,331.2	0.00	0.00	0.00
HARD LINES 50'W of BHL									

Checked By: _____	Approved By: _____	Date: _____
-------------------	--------------------	-------------