

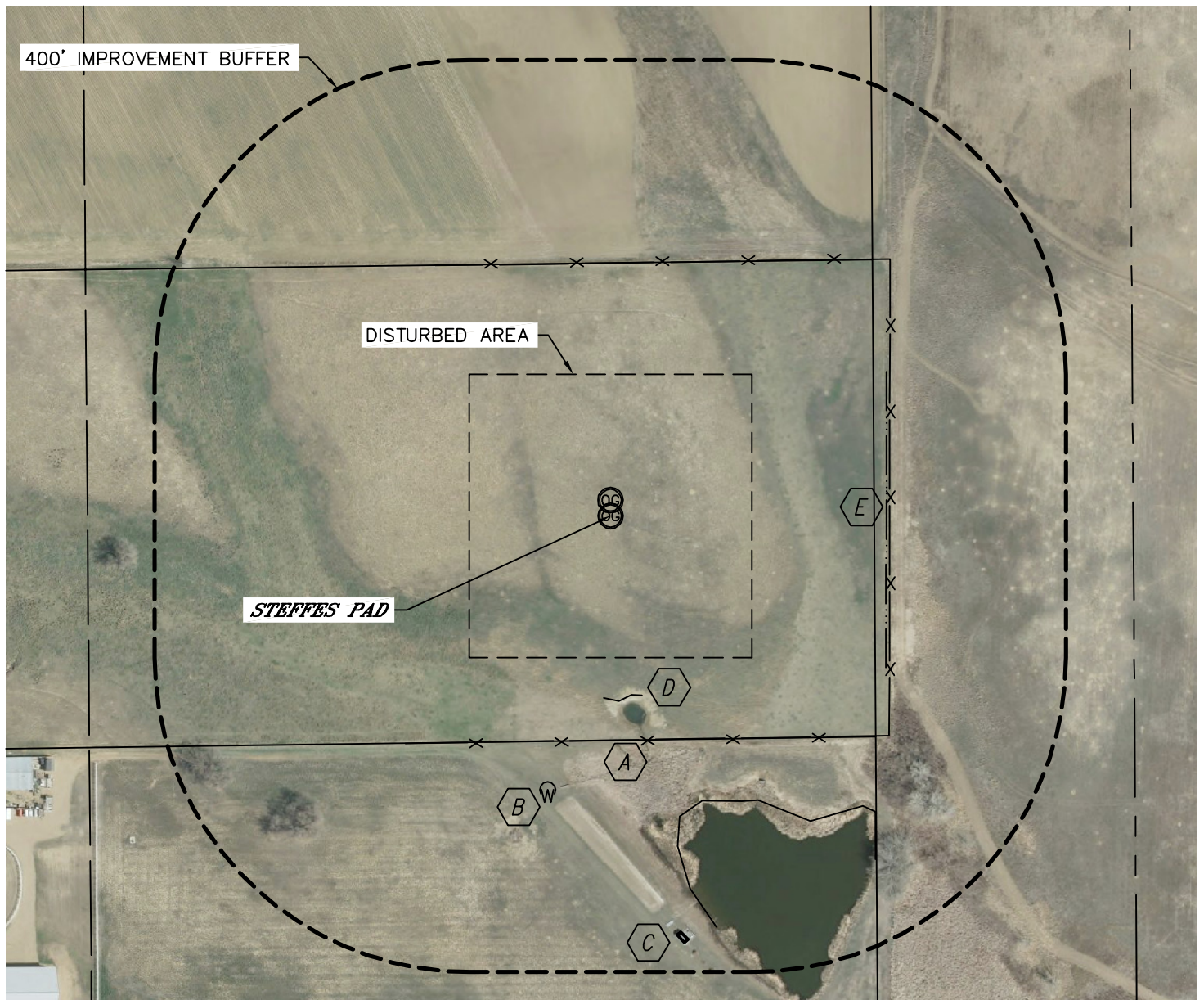


Lat40°, Inc. 1635 Foxtrail Drive, Suite 325 Loveland, CO 970-776-3321

LOCATION DRAWING

STEFFES 22-2, 21-2D

SECTION: 2
TOWNSHIP: 3N
RANGE: 68W



IMPROVEMENTS:

(DISTANCES MEASURED FROM STEFFES 22-2 LOCATION)

- A** FENCE 285' S, 355' E, 322' N
- B** PUMP HOUSE 357' SW
- C** SHED 536' SE
- D** POND 230' S, 380' SE
- E** DITCH 351' E

NEAREST: BUILDING 536' SE, PUBLIC ROAD (I-25 FRONTAGE) 1980' W,
ABOVE GROUND UTILITY 1950' W, RAILROAD 3950' SE, PROPERTY LINE 285' S