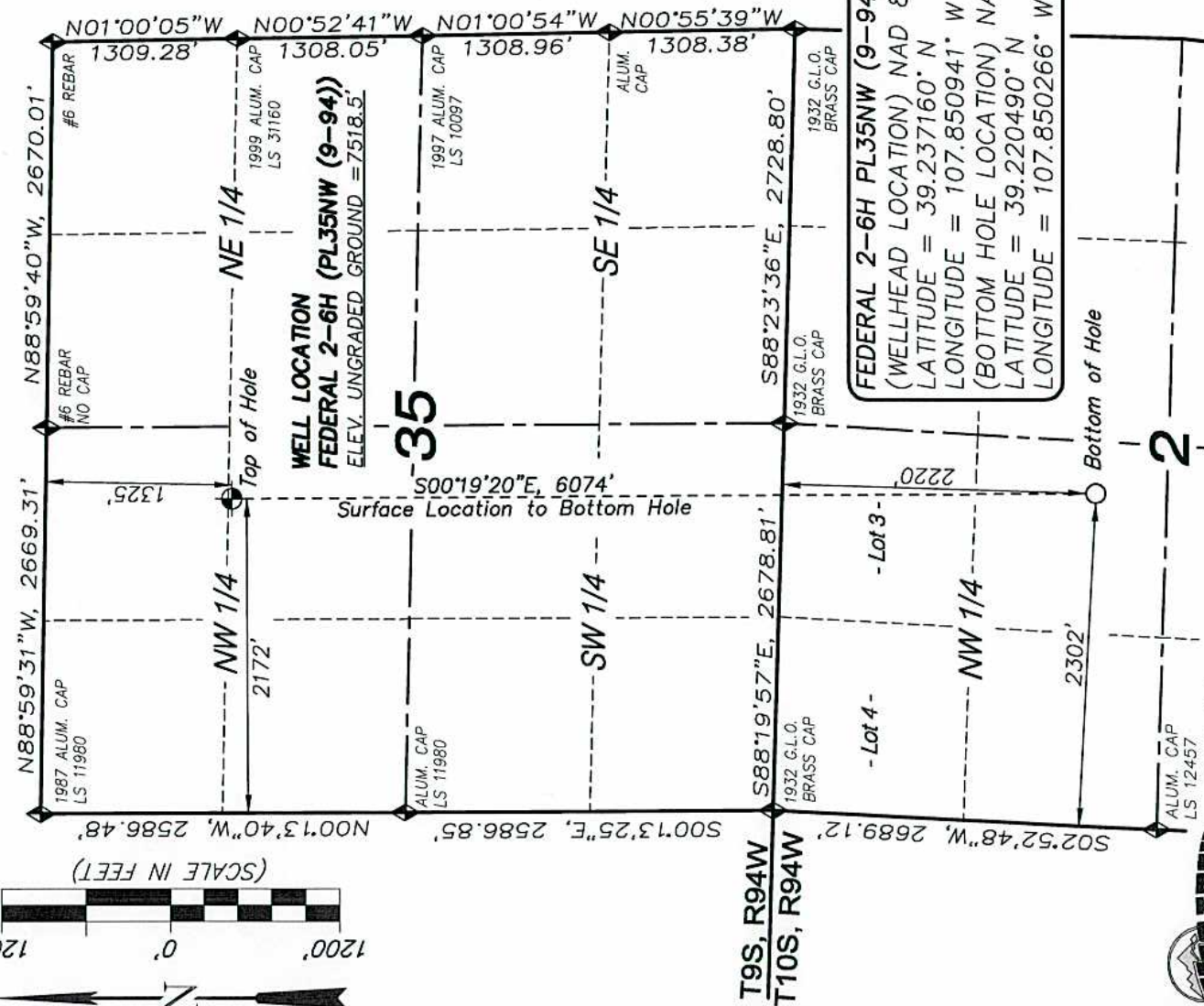
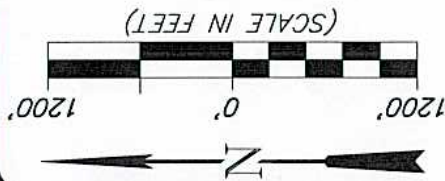


T9S, R94W, 6th P.M.



**FEDERAL 2-6H PL35NW (9-94) WELL**  
 (WELLHEAD LOCATION) NAD 83  
 LATITUDE = 39.237160° N  
 LONGITUDE = 107.850941° W  
 (BOTTOM HOLE LOCATION) NAD 83  
 LATITUDE = 39.220490° N  
 LONGITUDE = 107.850266° W

**NOTES**

1. WELL FOOTAGES ARE MEASURED AT RIGHT ANGLES TO SECTION LINES.
2. ALL DIRECTIONS, DISTANCES AND DIMENSIONS SHOWN HEREON ARE BASED ON THE STATE PLANE COORDINATE SYSTEM "COLORADO CENTRAL NAD 83" U.S. SURVEY FEET.
3. THE BOTTOM HOLE BEARS S00°19'20"E, 6074' FROM TOP OF HOLE.
4. SEE ADDENDUM TO LEGAL PLAT (SHEET 1b) FOR VISIBLE IMPROVEMENTS WITHIN 400 FEET OF THE PROPOSED OIL & GAS LOCATION.
5. CONTROL FOR SURVEY WAS ESTABLISHED USING DIFFERENTIALLY CORRECTED GPS FROM AN OPUS BASED CONTROL NETWORK. WELL LOCATION WAS ESTABLISHED USING NON-GPS CONVENTIONAL METHODS, THEREFORE NO PDOP READING WAS TAKEN.

**CERTIFICATE OF SURVEYOR**

I, TED TAGGART OF FRUITA, COLORADO HEREBY CERTIFY THAT THIS MAP WAS MADE FROM NOTES TAKEN DURING AN ACTUAL SURVEY MADE BY ME OR UNDER MY DIRECTION FOR ENCANA OIL & GAS (USA) INC. AND THAT THIS LOCATION HAS BEEN STAKED ON THE GROUND AS SHOWN HEREON.



**LEGEND**

- SECTION CORNER LOCATED
- SURFACE LOCATION
- BOTTOM HOLE LOCATION
- RECORD LOCATION OF CORNER

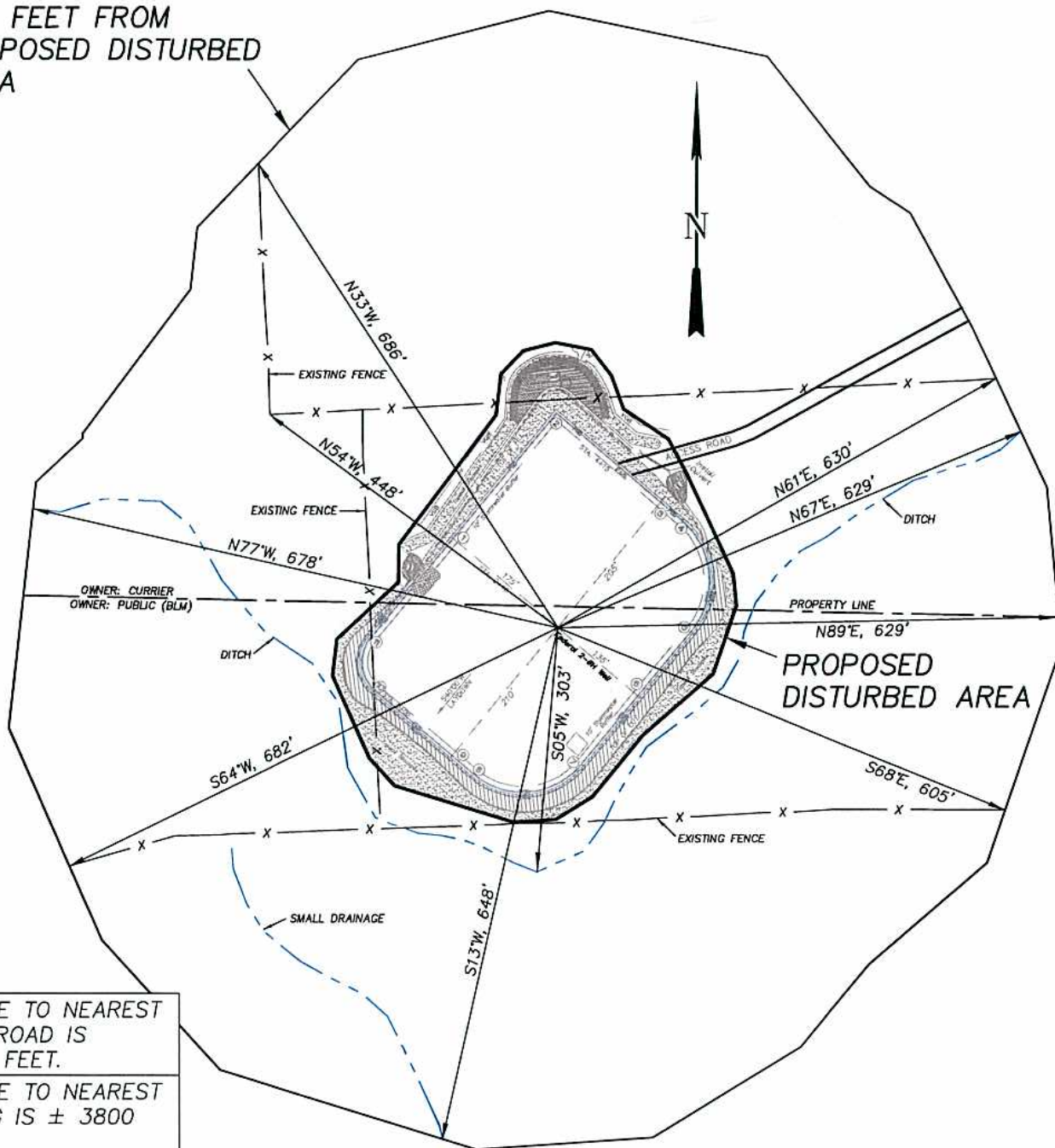
**MAP to ACCOMPANY**  
**APPLICATION for PERMIT to DRILL**  
**EnCana Oil & Gas (USA) Inc.**  
**Federal 2-6H PL35NW (9-94) Well**

SE1/4 NW1/4, SECTION 35  
 T9S, R94W, 6th P.M.  
 MESA COUNTY, COLORADO

Location Plat		Scale: 1" = 1200'	SHEET
Project No.	10-04-80	Date Surveyed: 1/18/11	<b>1a</b> OF 10
Date Drawn: 5/31/11	Latest Revision	Date:	

**EnCana Oil & Gas (USA) Inc.**  
**ADDENDUM TO LEGAL PLATS FOR**  
**PL35NW (9-94) Well Pad**  
**SECTION 35, T9S, R94W, 6th P.M.**

400 FEET FROM  
 PROPOSED DISTURBED  
 AREA



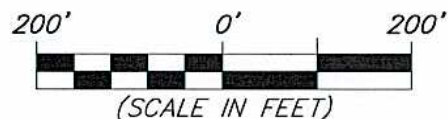
DISTANCE TO NEAREST  
 PUBLIC ROAD IS  
 ± 4890 FEET.

DISTANCE TO NEAREST  
 BUILDING IS ± 3800  
 FEET.

DISTANCE TO NEAREST  
 ABOVE GROUND UTILITY  
 IS ± 4000 FEET.

DISTANCE TO NEAREST  
 RAILROAD IS ± 94,000  
 FEET.

Surface use of pad is grazing.  
 Vegetation consists mainly of  
 sage brush, oak brush and native  
 grasses.



906 Main Street  
 Evanston, Wyoming 82930  
 Phone No. (307) 789-4545

Survey Addendum		Scale: 1" = 200'	SHEET <b>1b</b> OF 10
Project No.	10-04-80	Date Surveyed: 1/18/11	
Date Drawn:	5/31/11	Latest Revision Date:	