

REFERENCE INFORMATION

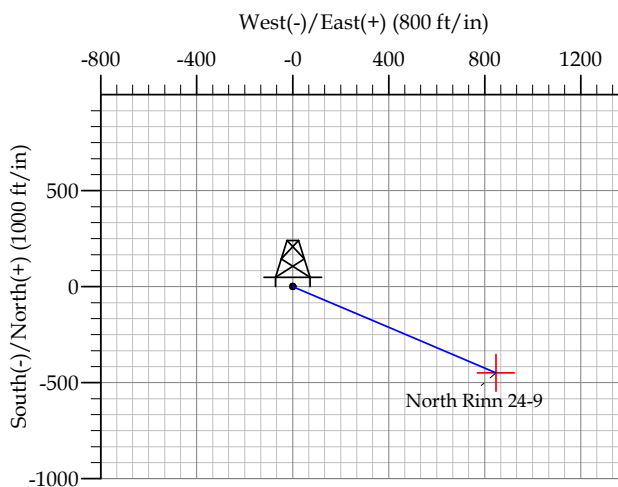
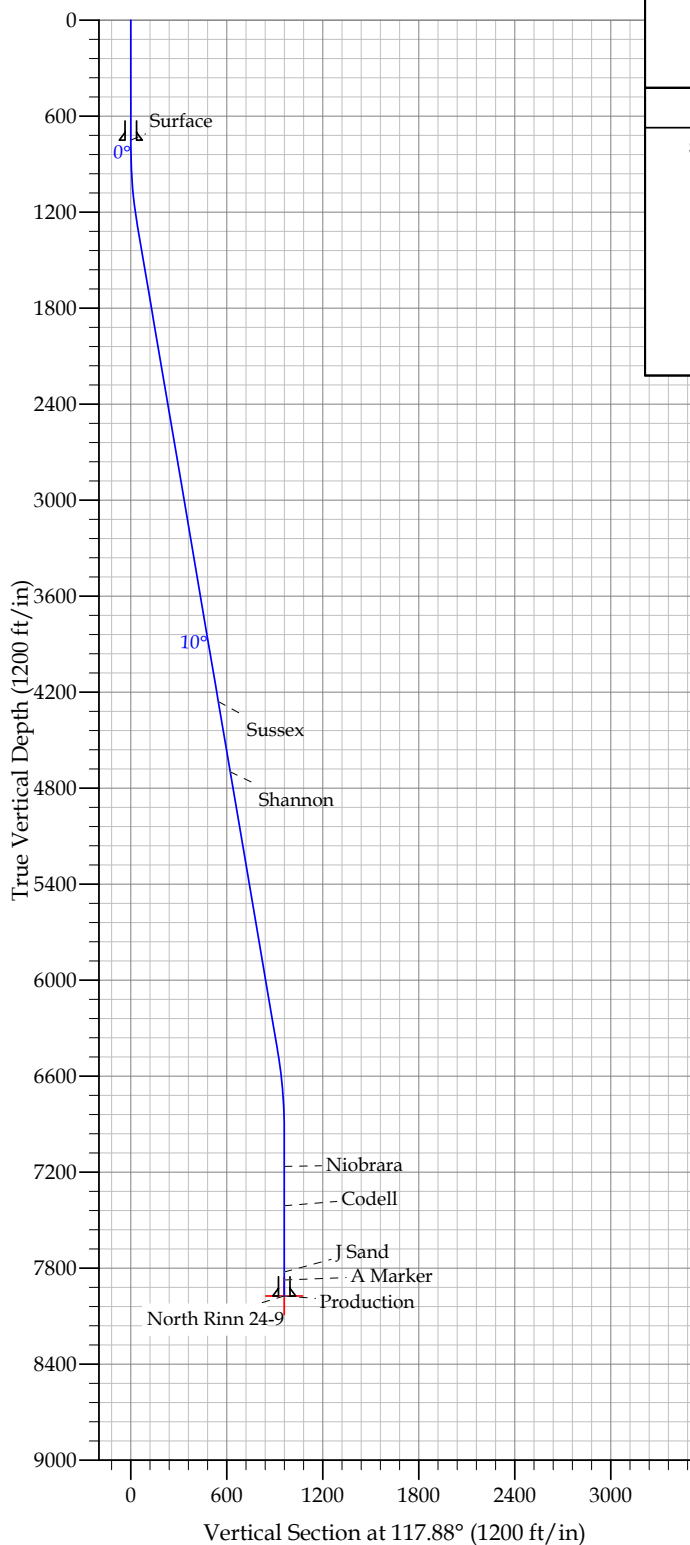
Co-ordinate (NE) Reference: Well North Rinn 24-9, True North
 Vertical (TVD) Reference: WELL @ 4879.0ft (Original Well Elev)
 Section (VS) Reference: Slot - (0.0N, 0.0E)
 Measured Depth Reference: WELL @ 4879.0ft (Original Well Elev)
 Calculation Method:

WELL DETAILS: North Rinn 24-9

+N/-S	+E/-W	Northing	Ground Level:	4866.0	Longitude	Slot
0.0	0.0	1297518.97	Easting	3135990.55	40° 8' 56.616 N105° 0' 48.672 W	

SECTION DETAILS

Sec	MD	Inc	Azi	TVD	+N/-S	+E/-W	DLeg	TFace	VSec	Target
1	0.0	0.00	0.00	0.0	0.0	0.0	0.00	0.00	0.0	
2	800.0	0.00	0.00	800.0	0.0	0.0	0.00	0.00	0.0	
3	1282.0	9.64	117.88	1279.7	-18.9	35.8	2.00	117.88	40.4	
4	6521.6	9.64	117.88	6445.3	-429.1	811.3	0.00	0.00	917.8	
5	7003.5	0.00	0.00	6925.0	-448.0	847.0	2.00	180.00	958.2	
6	8053.5	0.00	0.00	7975.0	-448.0	847.0	0.00	0.00	958.2	North Rinn 24-9



FORMATION TOP DETAILS

TVDPath	MDPath	Formation
4259.0	4303.9	Sussex
4699.0	4750.2	Shannon
7164.0	7242.5	Niobrara
7411.0	7489.5	Codell
7825.0	7903.5	J Sand
7874.0	7952.5	A Marker

CASING DETAILS

TVD	MD	Name	Size
750.0	750.0	Surface	8.625
7975.0	8053.5	Production	4.500

EnCana Corporation

Planning Report - Geographic

Database:	EDM	Local Co-ordinate Reference:	Well North Rinn 24-9
Company:	DJ/Paradox/WTX	TVD Reference:	WELL @ 4879.0ft (Original Well Elev)
Project:	Wattenberg	MD Reference:	WELL @ 4879.0ft (Original Well Elev)
Site:	New Drills	North Reference:	True
Well:	North Rinn 24-9	Survey Calculation Method:	Minimum Curvature
Wellbore:	Wellbore #1		
Design:	North Rinn 24-9		

Project Wattenberg,			
Map System:	US State Plane 1983	System Datum:	Mean Sea Level
Geo Datum:	North American Datum 1983		
Map Zone:	Colorado Northern Zone		

Site New Drills			
Site Position:		Northing:	1,278,589.08ft
From:	Lat/Long	Easting:	3,130,247.44ft
Position Uncertainty:	ft	Slot Radius:	in
		Latitude:	40° 5' 49.848 N
		Longitude:	105° 2' 3.912 W
		Grid Convergence:	0.30 °

Well North Rinn 24-9			
Well Position	+N/-S	18,898.1 ft	Northing:
	+E/-W	5,846.9 ft	Easting:
Position Uncertainty		ft	Wellhead Elevation:
			ft
			Latitude:
			40° 8' 56.616 N
			Longitude:
			105° 0' 48.672 W
			Ground Level:
			4,866.0 ft

Wellbore Wellbore #1					
Magnetics	Model Name	Sample Date	Declination (°)	Dip Angle (°)	Field Strength (nT)
	IGRF200510	12/31/2009	9.13	66.86	53,145

Design North Rinn 24-9				
Audit Notes:				
Version:	Phase:	PROTOTYPE	Tie On Depth:	0.0
Vertical Section:	Depth From (TVD) (ft)	+N/-S (ft)	+E/-W (ft)	Direction (°)
	0.0	0.0	0.0	117.88

Plan Sections										
Measured Depth (ft)	Inclination (°)	Azimuth (°)	Vertical Depth (ft)	+N/-S (ft)	+E/-W (ft)	Dogleg Rate (°/100ft)	Build Rate (°/100ft)	Turn Rate (°/100ft)	TFO (°)	Target
0.0	0.00	0.00	0.0	0.0	0.0	0.00	0.00	0.00	0.00	
800.0	0.00	0.00	800.0	0.0	0.0	0.00	0.00	0.00	0.00	
1,282.0	9.64	117.88	1,279.7	-18.9	35.8	2.00	2.00	0.00	117.88	
6,521.6	9.64	117.88	6,445.3	-429.1	811.3	0.00	0.00	0.00	0.00	
7,003.5	0.00	0.00	6,925.0	-448.0	847.0	2.00	-2.00	0.00	180.00	
8,053.5	0.00	0.00	7,975.0	-448.0	847.0	0.00	0.00	0.00	0.00	North Rinn 24-9

EnCana Corporation

Planning Report - Geographic

Database:	EDM	Local Co-ordinate Reference:	Well North Rinn 24-9
Company:	DJ/Paradox/WTX	TVD Reference:	WELL @ 4879.0ft (Original Well Elev)
Project:	Wattenberg	MD Reference:	WELL @ 4879.0ft (Original Well Elev)
Site:	New Drills	North Reference:	True
Well:	North Rinn 24-9	Survey Calculation Method:	Minimum Curvature
Wellbore:	Wellbore #1		
Design:	North Rinn 24-9		

Planned Survey										
Measured Depth (ft)	Inclination (°)	Azimuth (°)	Vertical Depth (ft)	+N/-S (ft)	+E/-W (ft)	Map Northing (ft)	Map Easting (ft)	Latitude	Longitude	
0.0	0.00	0.00	0.0	0.0	0.0	1,297,518.97	3,135,990.55	40° 8' 56.616 N	105° 0' 48.672 W	
750.0	0.00	0.00	750.0	0.0	0.0	1,297,518.97	3,135,990.55	40° 8' 56.616 N	105° 0' 48.672 W	
Surface										
800.0	0.00	0.00	800.0	0.0	0.0	1,297,518.97	3,135,990.55	40° 8' 56.616 N	105° 0' 48.672 W	
1,282.0	9.64	117.88	1,279.7	-18.9	35.8	1,297,500.26	3,136,026.40	40° 8' 56.429 N	105° 0' 48.212 W	
4,303.9	9.64	117.88	4,259.0	-255.5	483.0	1,297,266.12	3,136,474.98	40° 8' 54.091 N	105° 0' 42.451 W	
Sussex										
4,750.2	9.64	117.88	4,699.0	-290.5	549.1	1,297,231.54	3,136,541.23	40° 8' 53.745 N	105° 0' 41.601 W	
Shannon										
6,521.6	9.64	117.88	6,445.3	-429.1	811.3	1,297,094.30	3,136,804.16	40° 8' 52.375 N	105° 0' 38.224 W	
7,003.5	0.00	0.00	6,925.0	-448.0	847.0	1,297,075.58	3,136,840.02	40° 8' 52.188 N	105° 0' 37.764 W	
7,242.5	0.00	0.00	7,164.0	-448.0	847.0	1,297,075.58	3,136,840.02	40° 8' 52.188 N	105° 0' 37.764 W	
Niobrara										
7,489.5	0.00	0.00	7,411.0	-448.0	847.0	1,297,075.58	3,136,840.02	40° 8' 52.188 N	105° 0' 37.764 W	
Codell										
7,903.5	0.00	0.00	7,825.0	-448.0	847.0	1,297,075.58	3,136,840.02	40° 8' 52.188 N	105° 0' 37.764 W	
J Sand										
7,952.5	0.00	0.00	7,874.0	-448.0	847.0	1,297,075.58	3,136,840.02	40° 8' 52.188 N	105° 0' 37.764 W	
A Marker										
8,053.5	0.00	0.00	7,975.0	-448.0	847.0	1,297,075.58	3,136,840.02	40° 8' 52.188 N	105° 0' 37.764 W	
Production - North Rinn 24-9										

Design Targets										
Target Name	Dip Angle (°)	Dip Dir. (°)	TVD (ft)	+N/-S (ft)	+E/-W (ft)	Northing (ft)	Easting (ft)	Latitude	Longitude	
North Rinn 24-9 - hit/miss target - Shape - Point	0.00	0.00	7,975.0	-448.0	847.0	1,297,075.58	3,136,840.02	40° 8' 52.188 N	105° 0' 37.764 W	

Casing Points						
Measured Depth (ft)	Vertical Depth (ft)	Name	Casing Diameter (in)	Hole Diameter (in)		
750.0	750.0	Surface	8.625	12.250		
8,053.5	7,975.0	Production	4.500	7.785		

Formations						
Measured Depth (ft)	Vertical Depth (ft)	Name	Lithology	Dip (°)	Dip Direction (°)	
4,303.9	4,259.0	Sussex		0.00		
4,750.2	4,699.0	Shannon		0.00		
7,242.5	7,164.0	Niobrara		0.00		
7,489.5	7,411.0	Codell		0.00		
7,903.5	7,825.0	J Sand		0.00		
7,952.5	7,874.0	A Marker		0.00		

EnCana Corporation
Planning Report - Geographic

Database:	EDM	Local Co-ordinate Reference:	Well North Rinn 24-9
Company:	DJ/Paradox/WTX	TVD Reference:	WELL @ 4879.0ft (Original Well Elev)
Project:	Wattenberg	MD Reference:	WELL @ 4879.0ft (Original Well Elev)
Site:	New Drills	North Reference:	True
Well:	North Rinn 24-9	Survey Calculation Method:	Minimum Curvature
Wellbore:	Wellbore #1		
Design:	North Rinn 24-9		