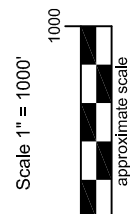
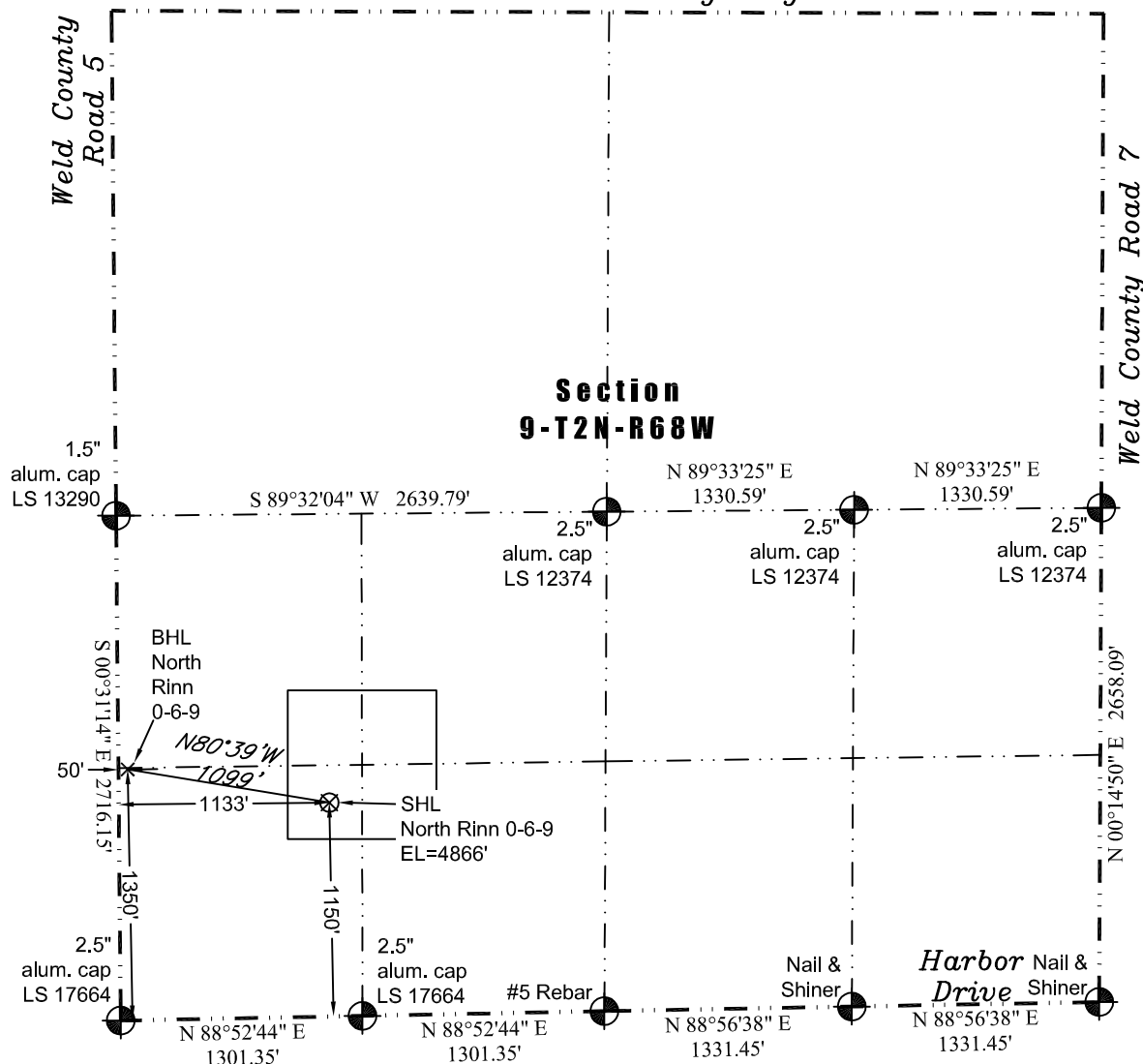


PLS Group, LLC
109 Coronado Ct. - Bldg. 7
Fort Collins, Colorado 80525
P. 970-282-3446 Fx. 970-377-6767

WELL LOCATION CERTIFICATE

THIS MAP DOES NOT
REPRESENT A BOUNDARY SURVEY

State Highway 119



LEGEND:
- found survey monument
- found Nail & Shiner fit RM's of Monument Record
(c) - calculated dimension

In accordance with a request from Dan Nelson of EnCana Oil & Gas (USA) Inc., PLS Group, LLC has determined the location of the **North Rinn 0-6-9** well site to be SHL: 1150' FSL and 1133' FWL, (BHL 1350' FSL and 50' FWL) as measured at ninety (90) degrees from the section lines of Section 9, Township 2 North, Range 68 West, 6th Principal Meridian, County of Weld, CO.

Proposed Surface Hole Data:

Latitude: N 40.14914° (BHL 40.14965°)
Longitude: W 105.01352° (BHL 105.01740°)
PDOP: 1.2

Nearest:

Building 2,094' southwest	Above Ground Utility 2,963' northeast
Public Road 3,304' southeast	Railroad 8,948' northwest
Property Line 176' east	Well Window: SHL is 196' inside
Existing Well: Longmont #8-10K 2,819' northwest	

Notes:

- 1) Bearings and distances based on NAD 83 Colorado North State Plane Coordinates using RTK GPS observations taken 5/13/11 by operator Tom Winans.
- 2) Conversion factor to ground (1.00027187).
- 3) Elevations based on NAVD 88 GPS heights and Geoid 2003 corrections.
- 4) See improvement map for visible improvements within 400 feet.
- 5) The surface use is agricultural field.

NOTICE: According to Colorado law you must commence any legal action based upon any defect in this W.L.C. within three years after you first discover such defect. In no event may any action based upon any defect in this W.L.C. be commenced more than ten years from this said date of the certification shown hereon.

I hereby certify that this Well Location Certificate was prepared by me or under my direct supervision on 5/15/2011 for and on behalf of EnCana Oil & Gas (USA) Inc. That it is not a Land Survey Plat or an Improvement Survey Plat and that it is not to be relied upon for establishment of fences, buildings, or other future improvement lines.

John Robert McGehee LS#38219
Well: North Rinn 0-6-9 WLC