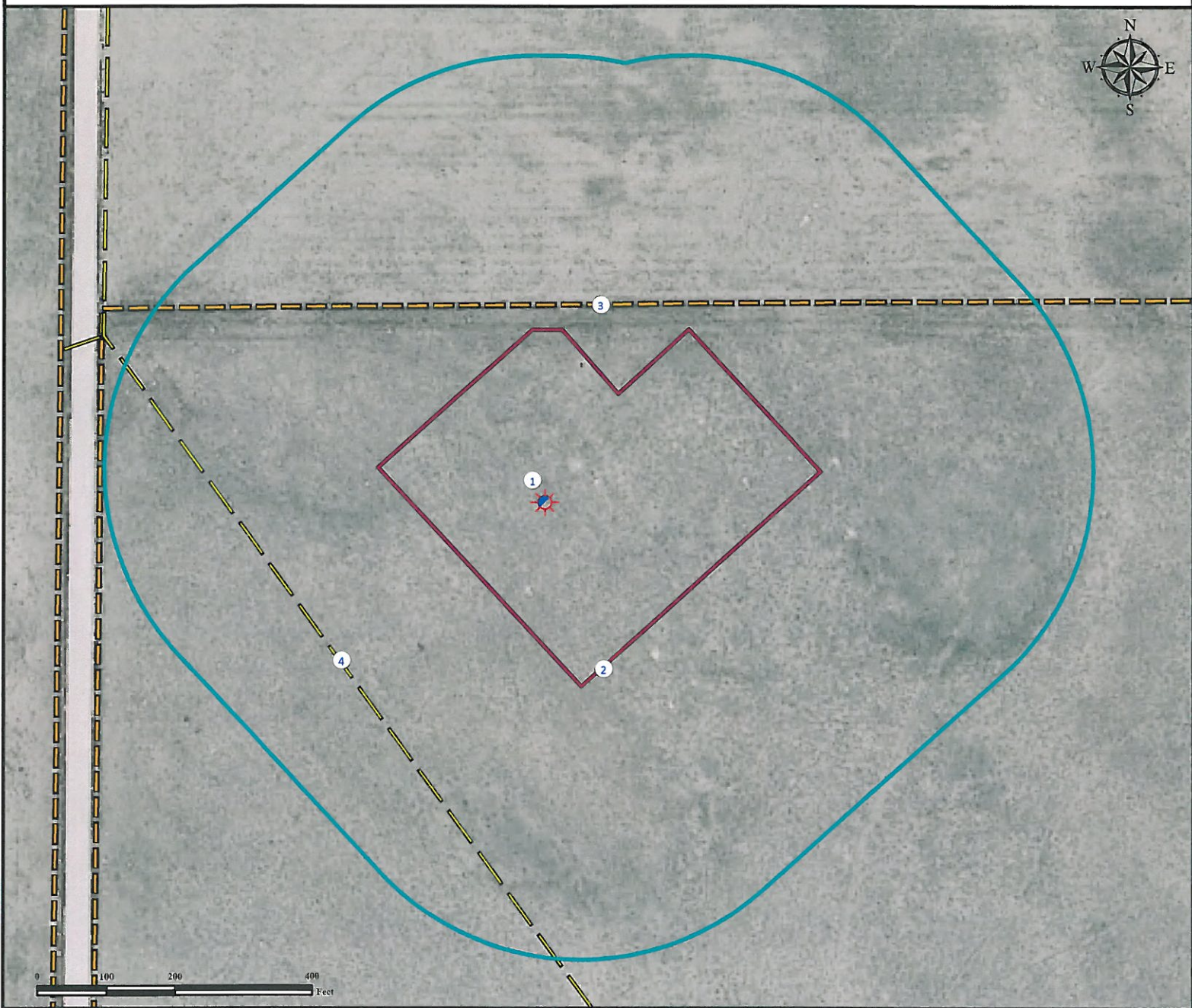


Location Drawing

SLICK ROCK 17-11-7-60

Horizontal Well Pad

NW¼ NW¼ SECTION 17, TOWNSHIP 7 NORTH, RANGE 60 WEST OF THE 6TH PRINCIPAL MERIDIAN



1. Proposed Well SLICK ROCK 17-11-7-60.

4. Minor Overhead Power Line is $\pm 374'$ SW.

2. Operational Disturbance Area.

3. Fence is $\pm 293'$ N.

Legend

 Proposed Well

 Disturbance Area

 400' Radius

 Fence

 Power Line

Reference Location

** All Measurements are Made from Reference Well
SLICK ROCK 17-11-7-60 (NAD83) **
LAT: 40.58174° LONG: -104.12437°
Elevation: 4927.8 Feet

Surface Use: Rangeland



Use our resources to find yours!
www.petro-fs.com
(303) 928-7128

Field Date: 03/08/2011
Drafting Date: 04/18/2011
Drafter: KLM
Checked By: BHF

Data Sources:
- Aerial courtesy of NAIP (2009)

Prepared for:

