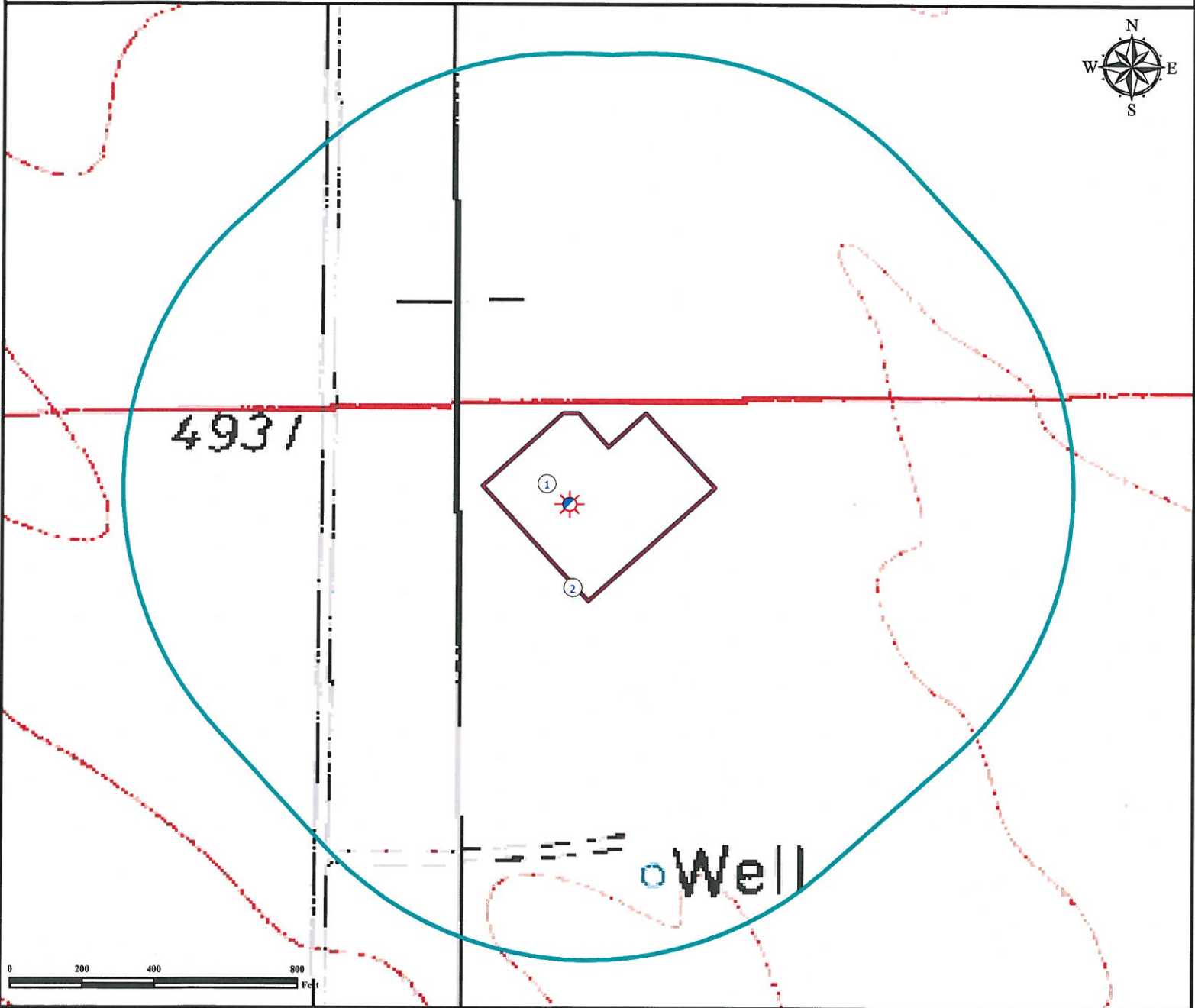


# Hydrology Map

## SLICK ROCK 17-11-7-60

NW¼ NW¼ SECTION 17, TOWNSHIP 7 NORTH, RANGE 60 WEST OF THE 6TH PRINCIPAL MERIDIAN



1. Proposed Well SLICK ROCK 17-11-7-60.

2. Operational Disturbance Area.

There are No Surface Waters Within 1000' of the Disturbed Area of the Proposed Oil & Gas Location.

### Legend

- Proposed Well
- 1000' Radius
- Disturbance Area

### Reference Location

\*\* All Measurements are Made from Reference Well  
 SLICK ROCK 17-11-7-60 (NAD83) \*\*  
 LAT: 40.58174° LONG: -104.12437°  
 Elevation: 4927.8 Feet



*Use our resources to find yours!*  
[www.petro-fs.com](http://www.petro-fs.com)  
 (303) 928-7128

Field Date: 03/08/2011  
 Drafting Date: 04/18/2011  
 Drafter: KLM  
 Checked By: BHF

Data Sources:  
 - Topo courtesy USGS

Prepared for:

