

QUICKSILVER RESOURCES, INC.

CONSTRUCTION LAYOUT FOR

STODDARD #33-30

SECTION 30, T6N, R90W, 6th. P.M.

2160' FSL 2016' FEL

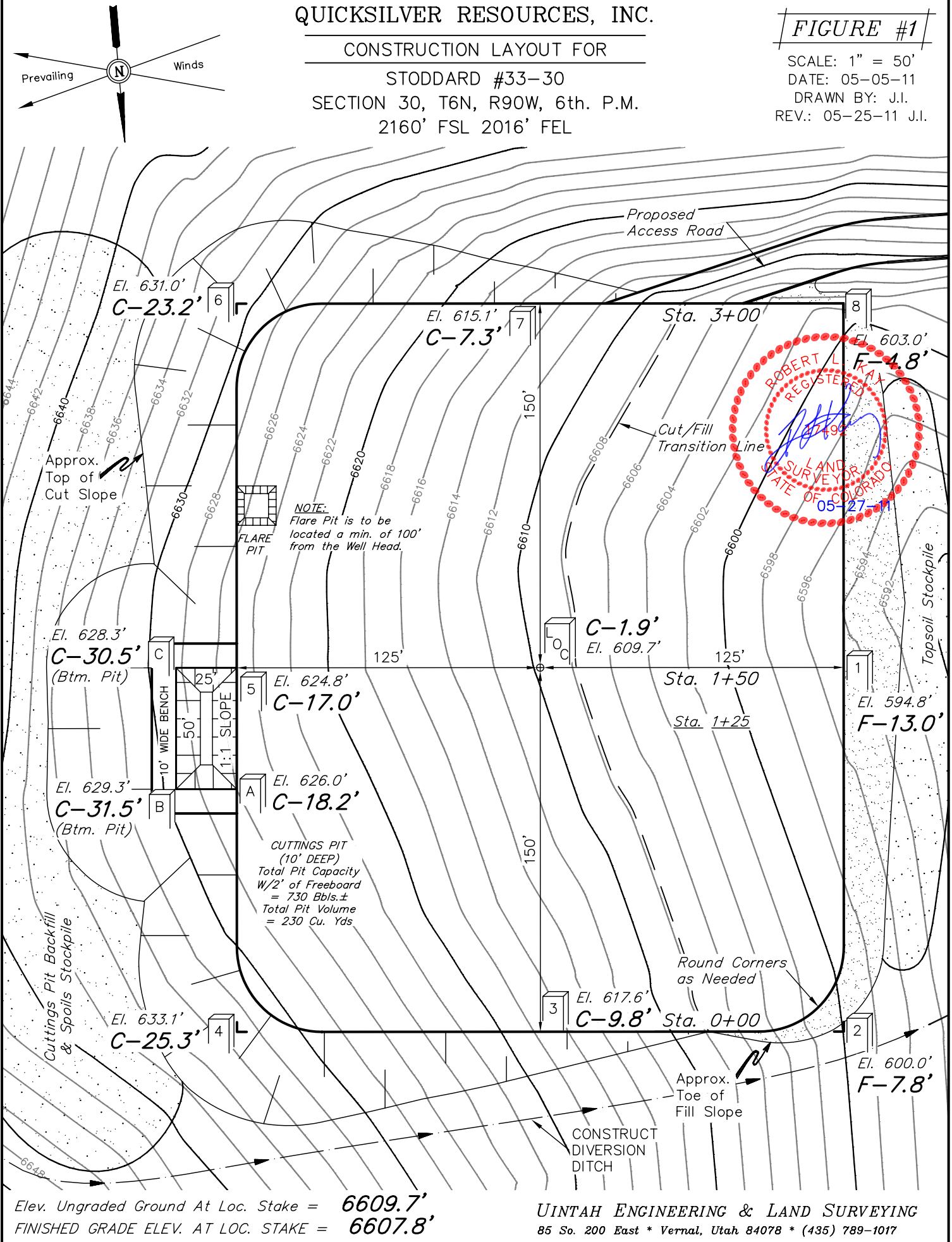
FIGURE #1

SCALE: 1" = 50'

DATE: 05-05-11

DRAWN BY: J.I.

REV.: 05-25-11 J.I.



Elev. Ungraded Ground At Loc. Stake = 6609.7'
FINISHED GRADE ELEV. AT LOC. STAKE = 6607.8'

UINTAH ENGINEERING & LAND SURVEYING
85 So. 200 East * Vernal, Utah 84078 * (435) 789-1017

QUICKSILVER RESOURCES, INC.

FIGURE #2

CONSTRUCTION LAYOUT CROSS SECTIONS FOR

STODDARD #33-30

SECTION 30, T6N, R90W, 6th. P.M.

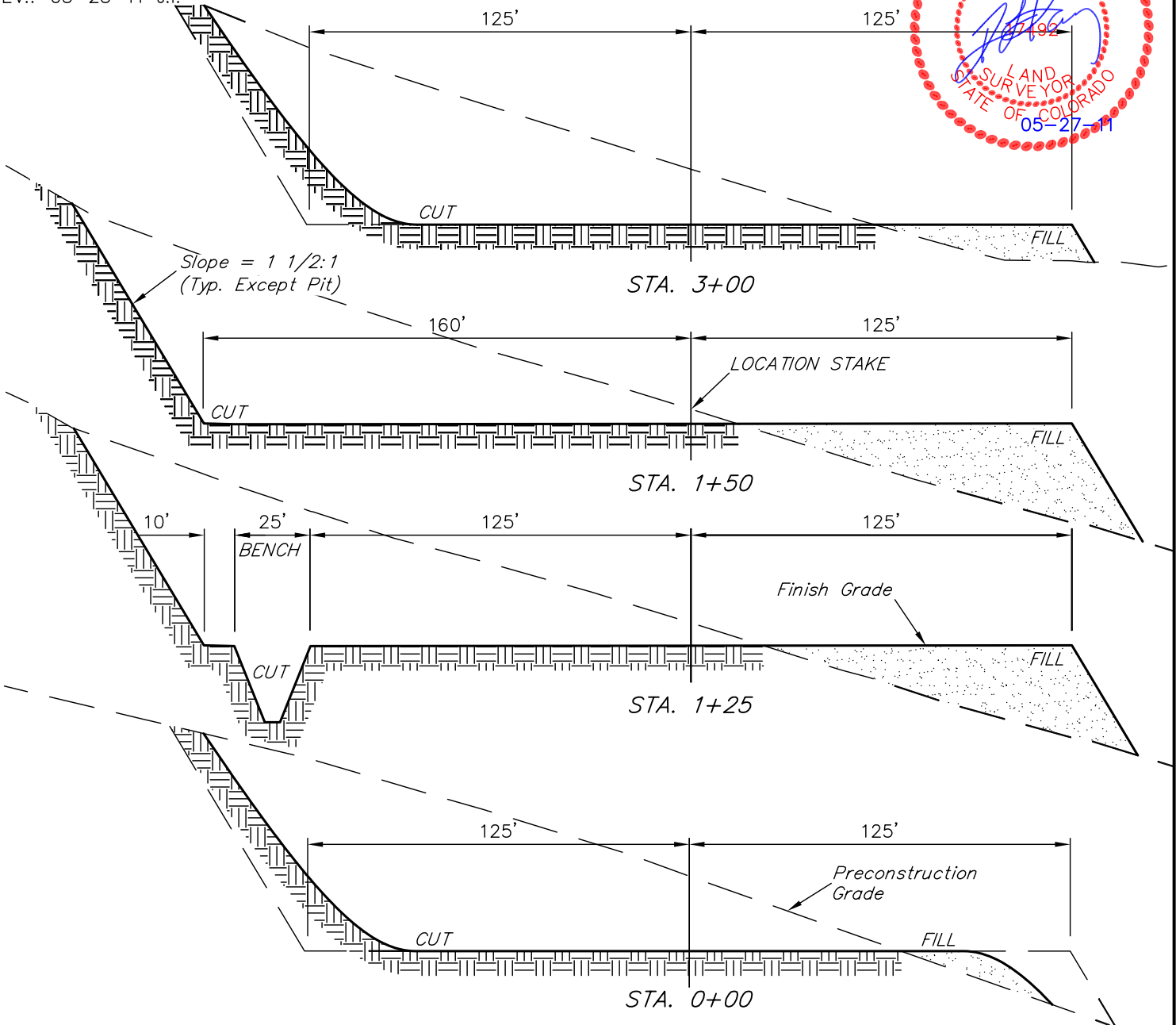
2160' FSL 2016' FEL

X-Section
Scale
1" = 50'

DATE: 05-05-11

DRAWN BY: J.I.

REV.: 05-25-11 J.I.



NOTE:

Topsoil should not be Stripped Below Finished Grade on Substructure Area.

APPROXIMATE ACREAGES

WELL SITE DISTURBANCE = ± 3.316 ACRES
ACCESS ROAD DISTURBANCE = ± 0.630 ACRES
TOTAL = ± 3.946 ACRES

* NOTE:
FILL QUANTITY INCLUDES 5% FOR COMPACTION

APPROXIMATE YARDAGES

(6") Topsoil Stripping = 2,090 Cu. Yds.
Remaining Location = 26,040 Cu. Yds.
TOTAL CUT = 28,130 CU.YDS.
FILL = 7,700 CU.YDS.

EXCESS MATERIAL = 20,430 Cu. Yds.
Topsoil & Pit Backfill (1/2 Pit Vol.) = 2,210 Cu. Yds.
EXCESS UNBALANCE = 18,220 Cu. Yds.
(After Interim Rehabilitation)

UINTAH ENGINEERING & LAND SURVEYING
85 So. 200 East * Vernal, Utah 84078 * (435) 789-1017

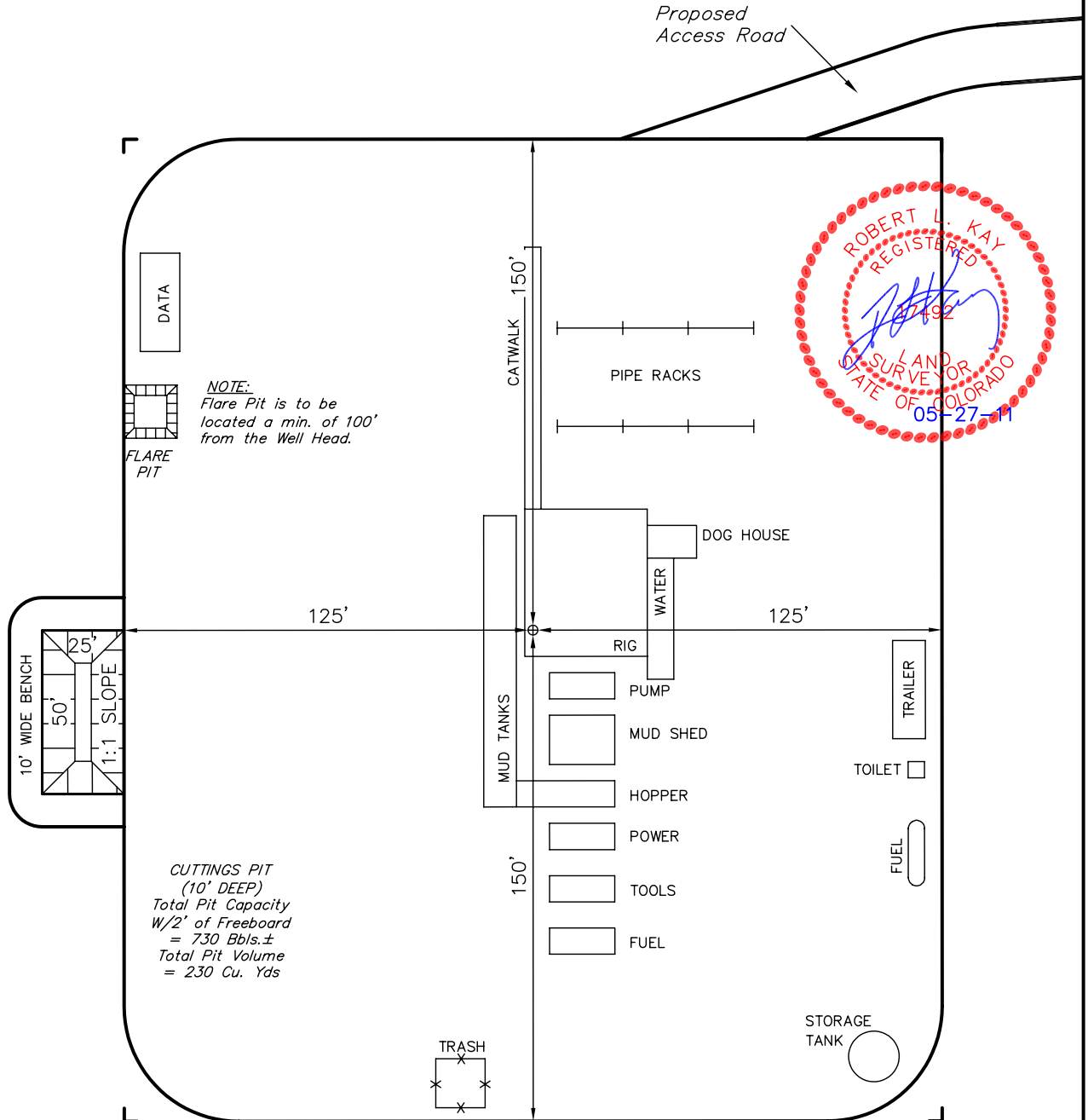


QUICKSILVER RESOURCES, INC.

TYPICAL RIG LAYOUT FOR
STODDARD #33-30
SECTION 30, T6N, R90W, 6th. P.M.
2160' FSL 2016' FEL

FIGURE #3

SCALE: 1" = 50'
DATE: 05-05-11
DRAWN BY: J.I.
REV.: 05-25-11 J.I.





QUICKSILVER RESOURCES, INC.

RECLAMATION DIAGRAM FOR

STODDARD #33-30

SECTION 30, T6N, R90W, 6th. P.M.

2160' FSL 2016' FEL

FIGURE #4

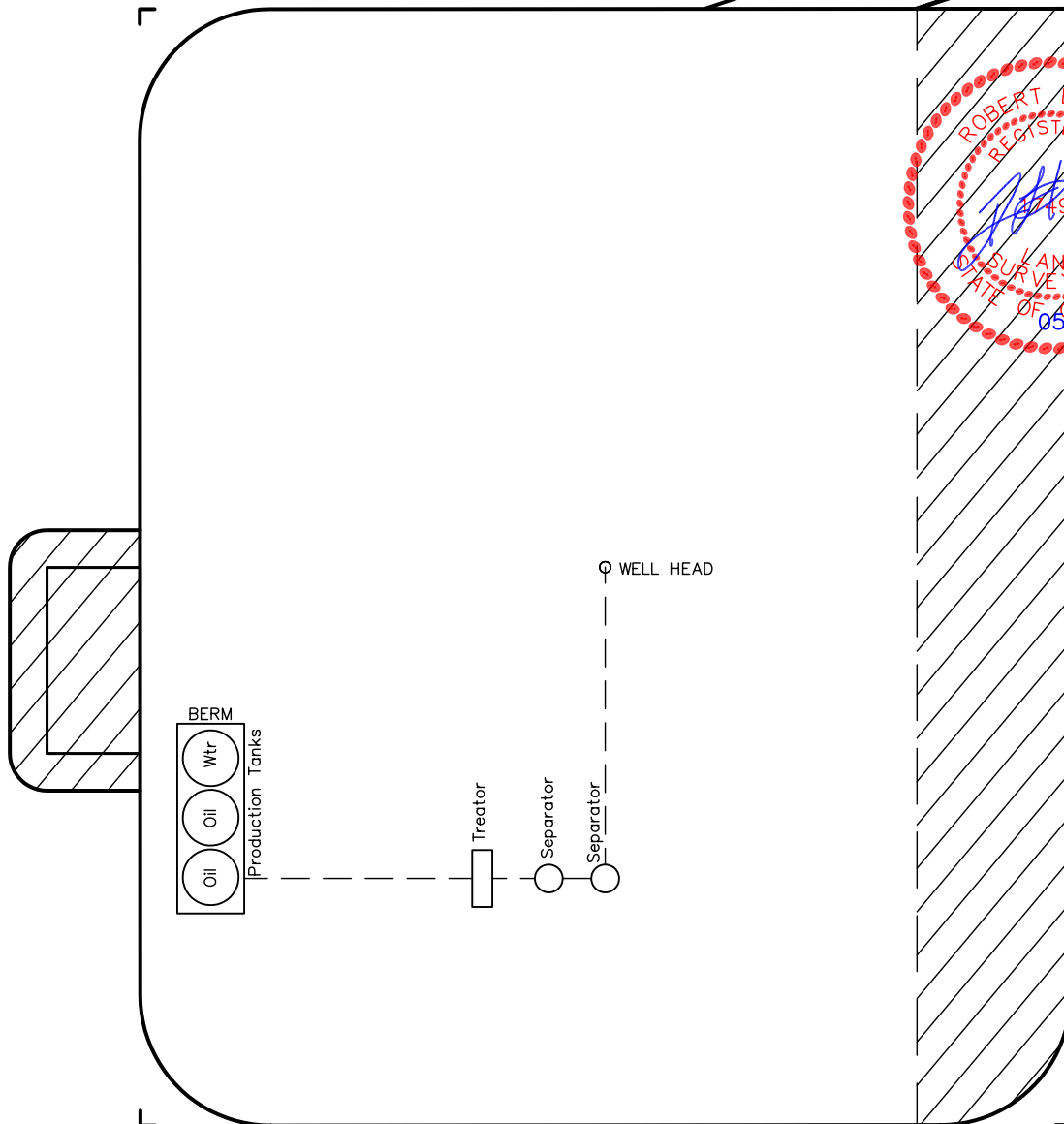
SCALE: 1" = 50'

DATE: 05-05-11

DRAWN BY: J.I.

REV.: 05-25-11 J.I.

Proposed
Access Road



APPROXIMATE ACREAGES
UN-RECLAIMED = ± 1.426 ACRES