

LEGEND:

PROPOSED LOCATION

N

QUICKSILVER RESOURCES, INC.

STODDARD #33-30

SECTION 30, T6N, R90W, 6th P.M.

2160' FSL 2016' FEL



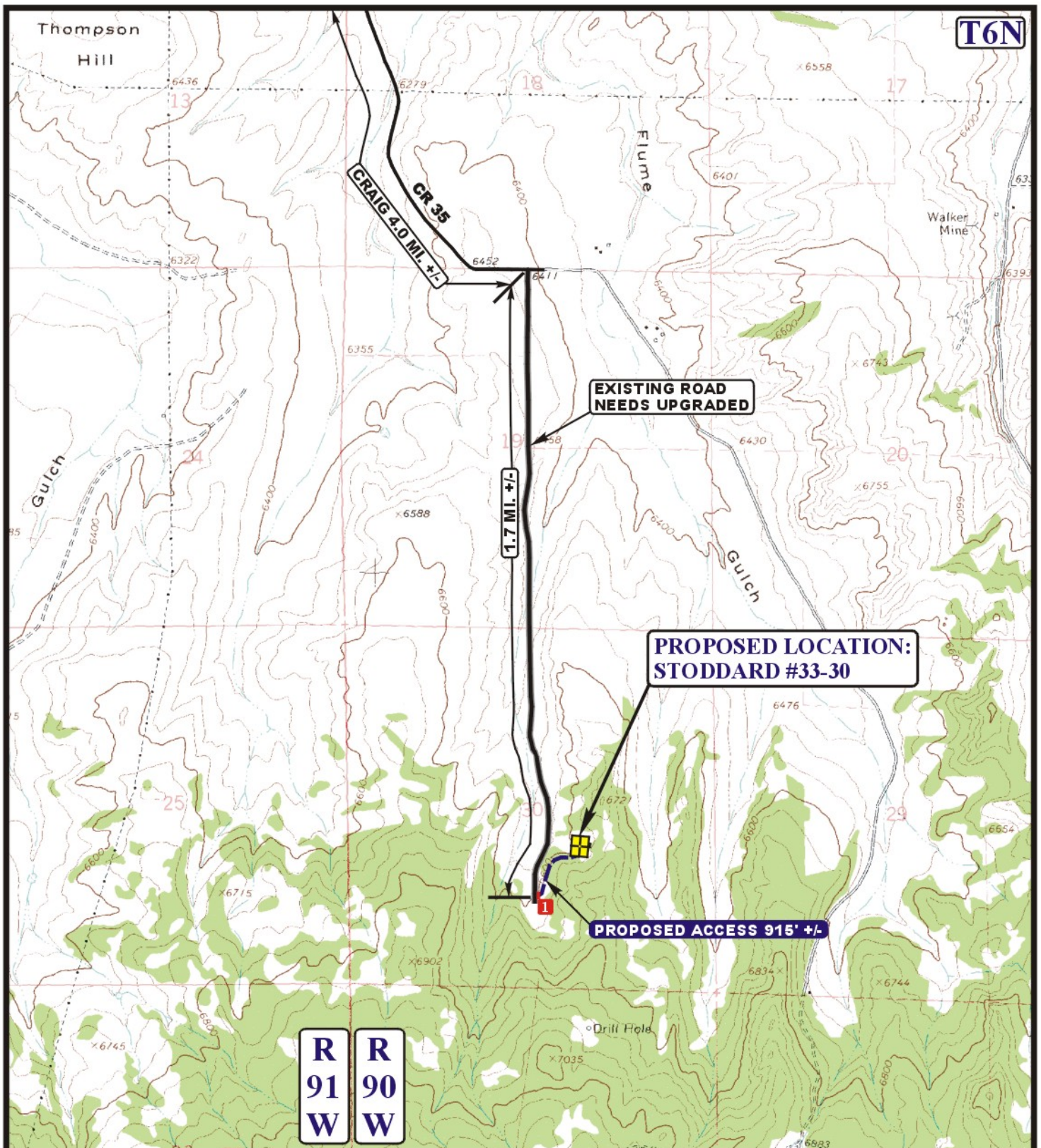
Uintah Engineering & Land Surveying
85 South 200 East Vernal, Utah 84078
(435) 789-1017 * FAX (435) 789-1813

ACCESS ROAD
MAP

05 05 11
MONTH DAY YEAR

A
TOPO

SCALE: 1:100,000 DRAWN BY: S.F. REVISED: 05-25-11



LEGEND:

- EXISTING ROAD
- PROPOSED ACCESS ROAD
- EXISTING ROAD NEEDS UPGRADED
- 18" CMP REQUIRED



Utah Engineering & Land Surveying
85 South 200 East Vernal, Utah 84078
(435) 789-1017 * FAX (435) 789-1813



QUICKSILVER RESOURCES, INC.

STODDARD #33-30
SECTION 30, T6N, R90W, 6th P.M.
2160' FSL 2016' FEL

ACCESS ROAD
MAP

05 05 11
MONTH DAY YEAR

SCALE: 1" = 2000' DRAWN BY: S.F. REVISED: 05-25-11

B
TOPO