

ATLAS ROCKIES, LLC

Date: 1/21/2011
 Prepared by: Maddie Lariviere
 Lease: FLATLAND
 Well Number: 844-11-22
 API: 05-095-06287-00
 Location: SENW, Sec. 11 T8N-R44W
 BHL
 Field: Amherst
 Unit:
 County: Phillips
 State: Colorado
 GL: 3731
 KB: 3743
 Spud Date: 12/8/2010
 Completion date: 4/14/2011
 First gas sales:

WI
 NRI
 Surface
 Mineral
 fee
 fee

SURVEYS:
 500 0.16
 1000 0.19
 1500 0.64
 2000 1.35
 2500 1.27
 2600 1.08

Geological tops
 Surface 3731
 Pierre Shale 310
 Sharron Springs 2412
 Niobrara Chalk 2458
 Beecher Island
 Carlile
 TD 2680

A-sect Wellhead Inc LM-70 7 X 4 1/2 1500# Screw on mandrel
 B-sect R&M LM-45 4 1/2 X 2 3/8 1500# Screw on mandrel
 Tree

Surface Cement
 Cement w/ 111 sk Portland 1/11 ASTM C 150 Cement
 and displace w/690 gal of water Cir 7 brls cement to
 the pit.. 50 ft cement left in the 7" sp. Pumped by Schaal
 drilling. Plug down 3:00 PM 12/8/2010

Producing ZONE Niobrara
 Hole Size 9 7/8
 Surf Casing 7" 17# 12 jts meas 456.94
 Shoe 468.94

0
 Hole Size 6 1/4
 Prod csg 4 1/2 11.6# 65 jts meas: 2650.95

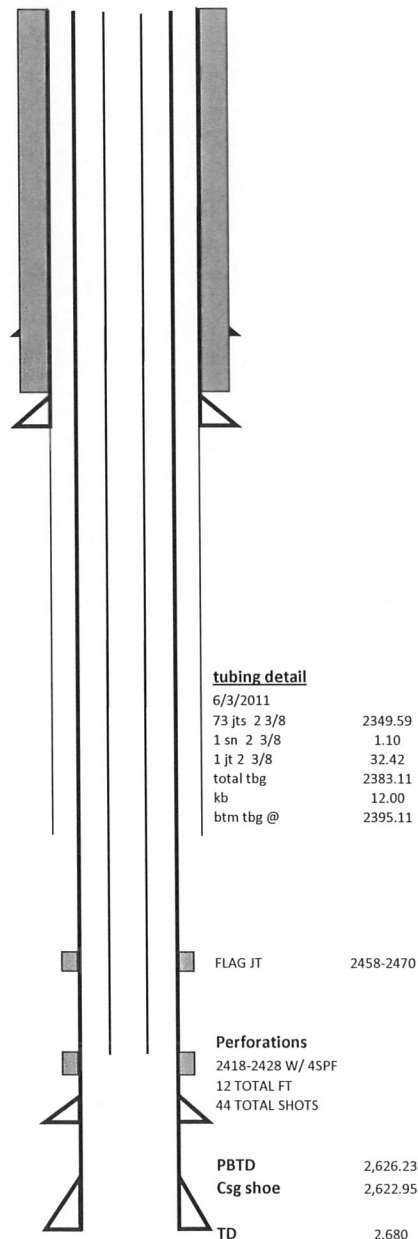
TOC 1,630

Cement Design
 Rig up ADT Cementers and cement
 w/122 sks type 1 neat cement .
 Displace w/690 brls water.
 Plug down @ 3:00 pm on 12/8/2010
 held ok

Stimulation Treatment
 Frac Niobrara with Maverick Stimulation using 28 # crosslinked gel
 50,040 #16/30 Arizona sand and 49,960 # 12/20 Texas Gold sand for a
 total of 100,000 # sand. 60 tons CO2. 547 BLWTR. 5 MIN- 741 PSI
 10 MIN-724 PSI. 15 MIN -718 PSI . MAX RATE 13.6 AVG RATE 9.6
 MAX PSI- 1212 AVG PSI 805 isip-828 psi

Comments

Date Completion history



tubing detail
 6/3/2011
 73 jts 2 3/8 2349.59
 1 sn 2 3/8 1.10
 1 jt 2 3/8 32.42
 total tbg 2383.11
 kb 12.00
 btm tbg @ 2395.11