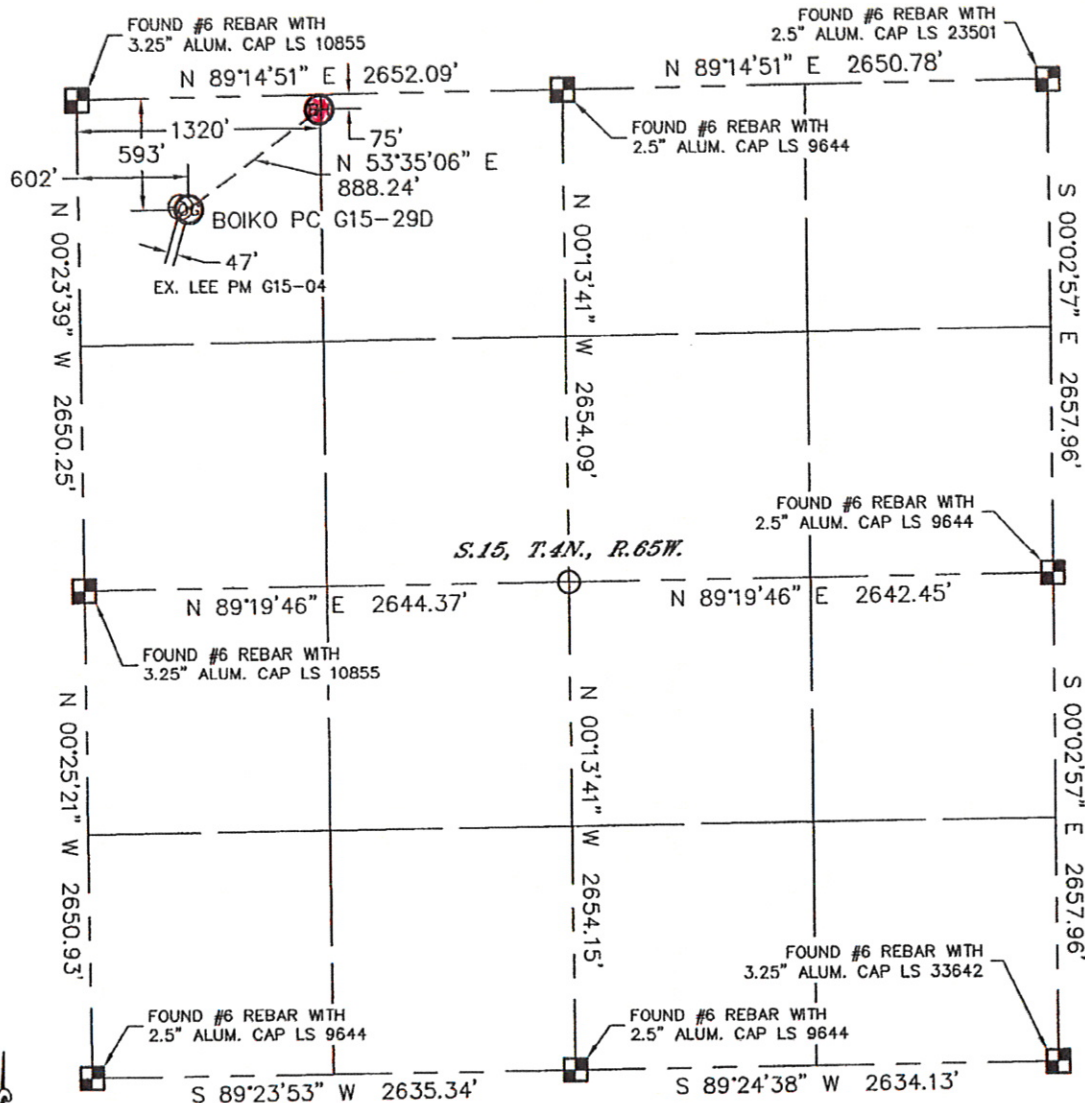


WELL LOCATION CERTIFICATE

THIS MAP DOES NOT REPRESENT A BOUNDARY SURVEY

SECTION: 15
TOWNSHIP: 4N
RANGE: 65W



In accordance with a request from Matt Campbell with Noble Energy Inc. Lat40°, Inc. has determined the surface location of the BOIKO PC G15-29D to be 593' from the NORTH line and 602' from the WEST line and the bottom hole to be 75' from the NORTH line and 1320' from the WEST line as measured at right angles from the section lines of Section 15, Township 4 North, Range 65 West of the Sixth Principal Meridian, County of Weld, State of Colorado.

I hereby state that this Well Location Certificate was prepared by me, or under my direct supervision, that the fieldwork was completed on 3/7/11, for and on behalf of Noble Energy Inc. That this is not a Land Survey Plat or an Improvement Survey Plat, and that it is not to be relied upon for establishment of fence, building, or other future improvement lines.

NOTE:

- 1) Bearings shown are Grid Bearings of the Colorado State Plane Coordinate System, North Zone, North American Datum 1983/2007. The lineal dimensions as contained herein are based upon the "U.S. Survey Foot."
- 2) Ground elevations are based on an observed GPS elevation (NAVD 1988 DATUM).
- 3) NEAREST EXISTING WELL: LEE PM G15-04, 47'
- 4) IMPROVEMENTS: See LOCATION DRAWING for all visible improvements within 400' of disturbed area.
- 5) SURFACE USE: PASTURE
- 6) INSTRUMENT OPERATOR: ADAM KELLY

SURFACE LOCATION
LATITUDE: 40.31809°N
LONGITUDE: 104.65644°W
PDOP: 1.8
ELEV: 4725'
1/4, 1/4: NW1/4NW1/4
NEAREST PROPERTY LINE: 348' NE

BOTTOM HOLE
LATITUDE: 40.31952°N
LONGITUDE: 104.65386°W

NOTE

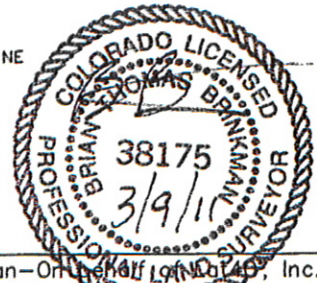
According to Colorado law, you must commence any legal action based upon any defect in this W.L.C. within three years after you discover such defect. In no event, may any action based upon any defect in this survey be commenced more than ten years after the date of the certificate shown hereon. (13-80-105 C.R.S.)

LEGEND

- = ALIQUOT MONUMENT AS DESCRIBED
- = CALCULATED POSITION

Brian T. Brinkman—On Behalf of Lat40°, Inc.
Colorado Licensed Professional
Land Surveyor No. 38175

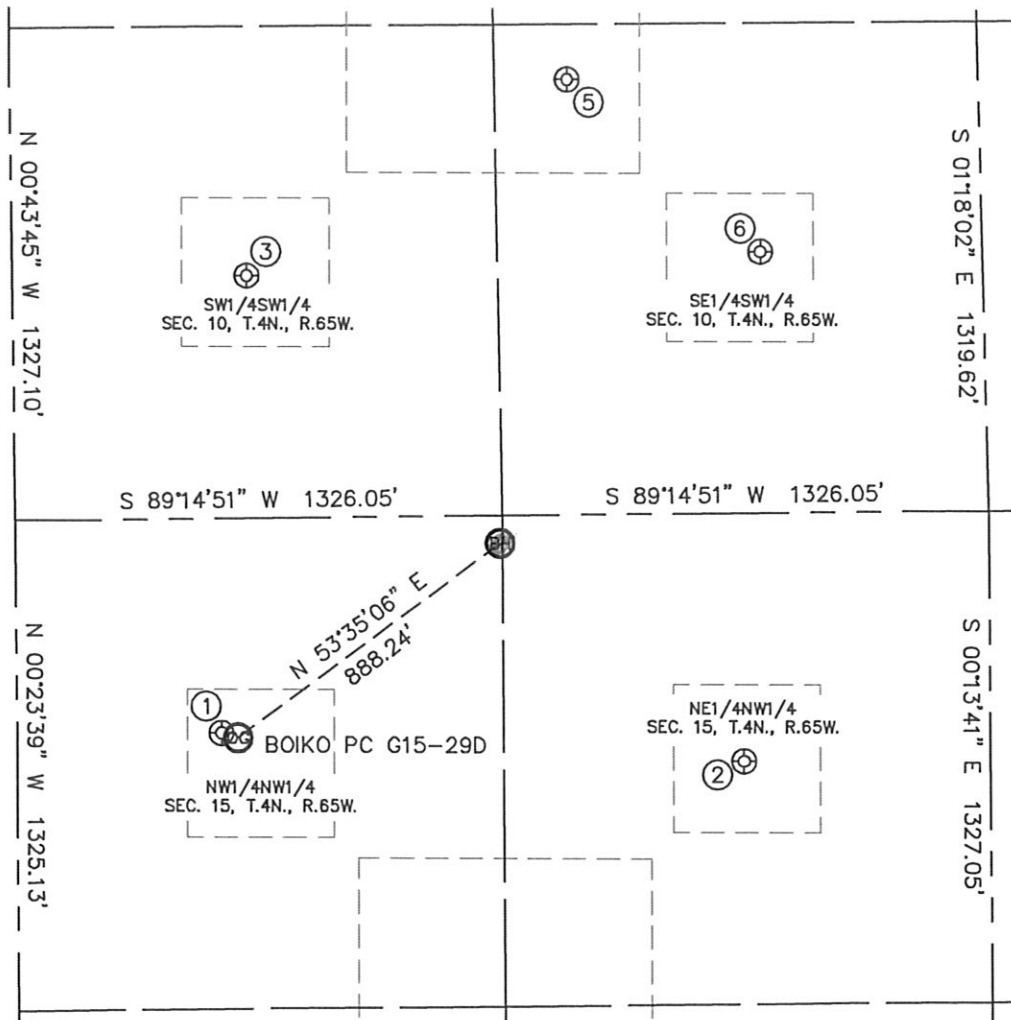
PROJECT#: 2011048



SITE SKETCH

BOIKO PC G15-29D

SECTION: 15
TOWNSHIP: 4N
RANGE: 65W



①
LEE PM G15-04
NW1/4NW1/4
579' FNL
557' FWL
LAT-40.31813°N
LONG-104.65661°W
PDOP: 2.5
ELEV: 4724'

②
LEE PM G15-03
NE1/4NW1/4
670' FNL
1981' FWL
LAT-40.31789°N
LONG-104.65150°W
PDOP: 2.0
ELEV: 4712'

③
LEE #1-10
SW1/4SW1/4
654' FSL
638' FWL
LAT-40.32151°N
LONG-104.65632°W
PDOP: 1.5
ELEV: 4708'

⑤
MOSER 10-35
SE1/4SW1/4
1173' FSL
1520' FWL
LAT-40.32295°N
LONG-104.65316°W
PDOP: 2.2
ELEV: 4698

⑥
MOSER 1
SE1/4SW1/4
704' FSL
2041' FWL
LAT-40.32166°N
LONG-104.65129°W
PDOP: 2.7
ELEV: 4698

