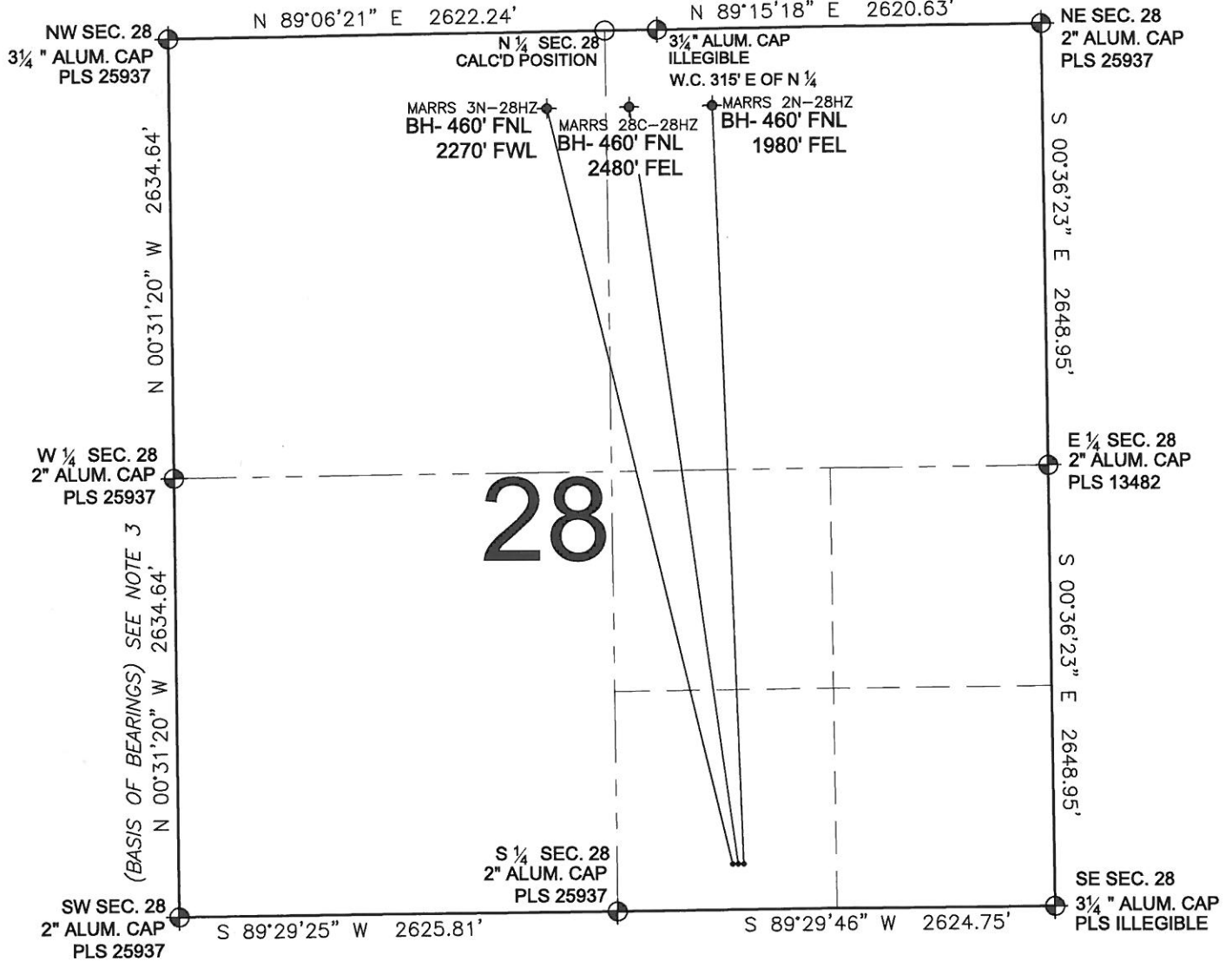


# PAD DRAWING: MARRS 3 PAD

## SECTION 28, TOWNSHIP 1 NORTH, RANGE 66 WEST, 6TH P.M.



**LEGEND**

- ⊕ = EXISTING MONUMENT    ⊕ = BOTTOM HOLE    BH= BOTTOM HOLE
- = PROPOSED WELL       ⊕ = EXISTING WELL

**NOTES:**

1. THIS FIELD SURVEY CONFORMS TO THE MINIMUM STANDARDS SET BY THE C.O.G.C.C., RULE NO. 215
2. HORIZONTAL POSITIONS AND ORTHOMETRIC ELEVATIONS SHOWN AT THE WELL HEAD, ARE BASED ON GPS-RTK POSITIONS DERIVED FROM MINIMUM 2-HOUR STATIC OBSERVATIONS CORRECTED BY THE NATIONAL GEODETIC SURVEY ONLINE POSITIONING USER SERVICE, O.P.U.S. DATUM: HORIZONTAL = NAD83/2007, VERTICAL = NAVD88
3. THE BASIS OF BEARINGS ARE STATE PLANE COORDINATE SYSTEM GRID BEARINGS SHOWN HEREON BETWEEN THE DESCRIBED THE MONUMENTS SHOWN HEREON.
4. GRID DISTANCES ARE SHOWN, AS MEASURED IN THE FIELD, WITH TIES TO WELLS MEASURED PERPENDICULAR TO SECTION LINES.

**NOTES:**

- MARRS 3N-28HZ TO BE AT 275' FSL, 1922' FEL.
- BOTTOM HOLE AT 460' FNL & 2270' FWL.
- MARRS 28C-28HZ TO BE AT 275' FSL, 1898' FEL.
- BOTTOM HOLE AT 460' FNL & 2480' FEL.
- MARRS 2N-28HZ TO BE AT 275' FSL, 1874' FEL.
- BOTTOM HOLE AT 460' FNL & 1980' FEL.

PREPARED BY:



**PFS**  
Petroleum Field Services, LLC  
1801 W. 13th Ave.  
Denver, CO 80204

**KERR-MCGEE OIL & GAS ONSHORE LP**

FIELD DATE: <b>03-23-11</b>	PAD NAME: <b>MARRS 3 PAD</b>
DRAWING DATE: <b>03-31-11</b>	SURFACE LOCATION: <b>WELD COUNTY, COLORADO SW 1/4 SE 1/4, SEC. 28, T1N, R66W</b>
BY: <b>SMF</b>	

