

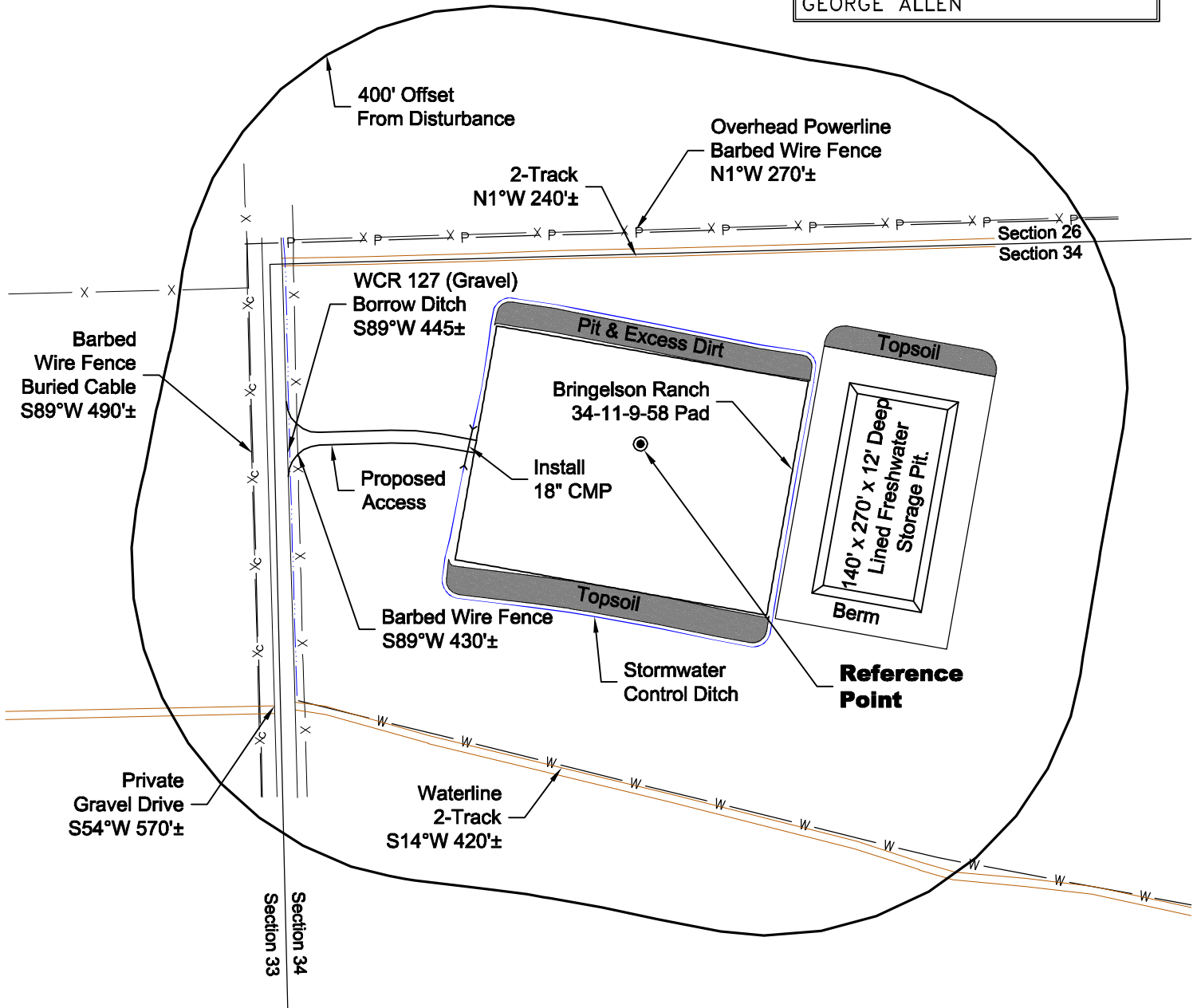
LOCATION DRAWING

VEGETATION:
DRY LAND PASTURE

SURFACE USE:
GRAZING

REFERENCE POINT

| |
|--------------------------------------|
| LATITUDE: 40.71423 |
| LONGITUDE: -103.85764 |
| FOOTAGE: 240 FNL 463 FWL |
| GROUND ELEVATION: 4810.5 |
| PDOP: 2.1 DATE: 5/26/2011 |
| INSTRUMENT OPERATOR: GEORGE ALLEN |



0 200 400
Graphic Scale in Feet
1 inch = 200 feet

DISTURBANCE ACREAGE:
3.8± DRILLING OPERATIONS
2.0± FRESHWATER STORAGE PIT
1.0± INTERIM RECLAIM

NOTE:

ALL PRODUCTION FACILITIES WILL BE ON PAD.

5/27/11

GEO SURV

LAND SURVEYING AND MAPPING
LAFAYETTE - WINTER PARK
Ph 303 666 0379 Fx 303 665 6320

CARRIZO OIL & GAS, INC
BRINGELSON RANCH 34-11-9-58 PAD

NW1/4 NW1/4 SEC. 34 T9N R58W
6th PM WELD COUNTY COLORADO