

LOCATION DRAWING

VEGETATION:
DRY LAND PASTURE

SURFACE USE:
GRAZING

REFERENCE POINT

LATITUDE: 40.75840

LONGITUDE: -104.05137

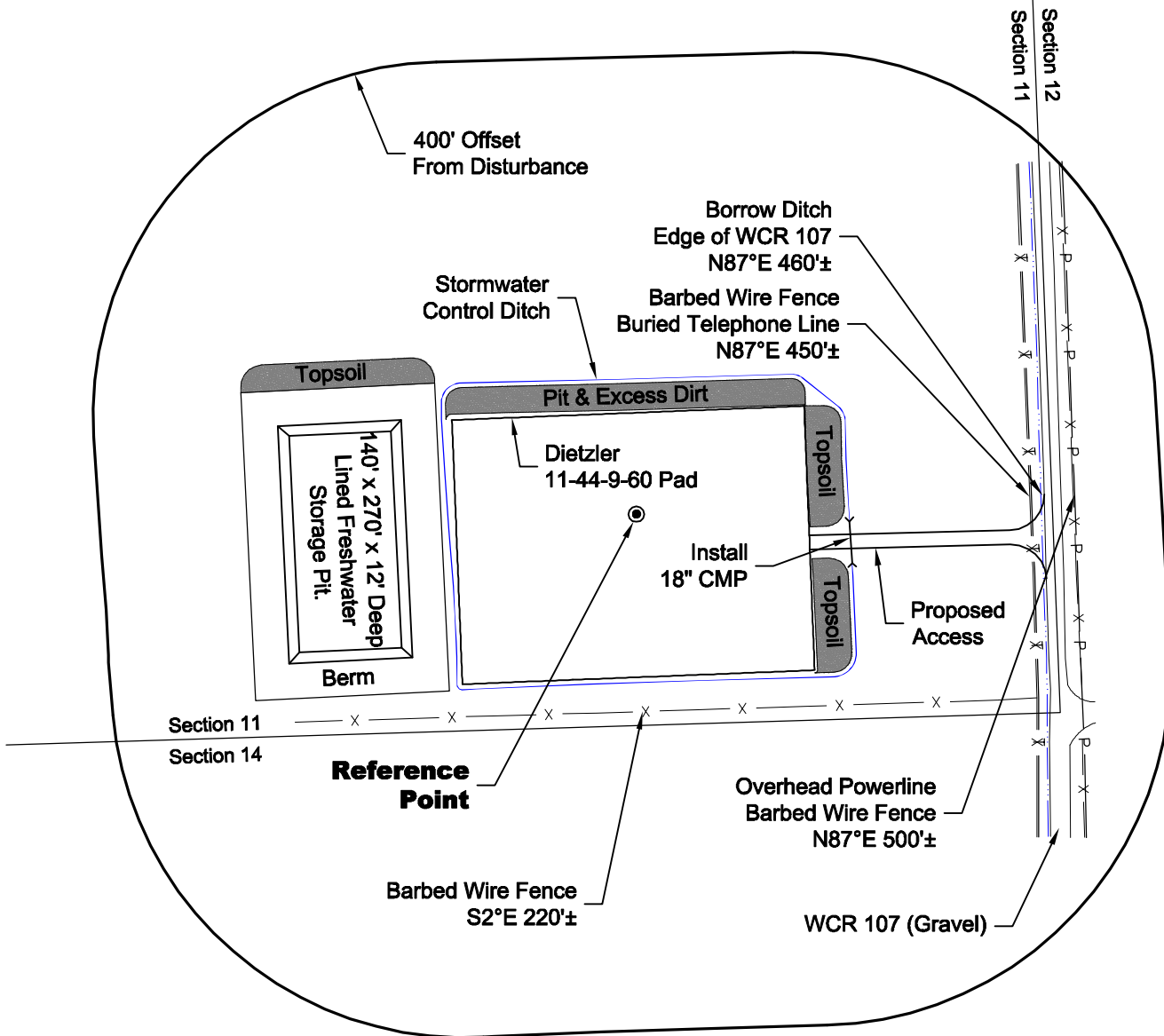
FOOTAGE: 240 FSL 472 FEL

GROUND ELEVATION: 5032.2

PDOP: 1.7 DATE: 4/21/2011

INSTRUMENT OPERATOR:

DAVE MURREY



0 200 400
Graphic Scale in Feet
1 inch = 200 feet

DISTURBANCE ACREAGE:
3.8± DRILLING OPERATIONS
2.0± FRESHWATER STORAGE PIT
1.0± INTERIM RECLAIM

NOTE:

ALL PRODUCTION FACILITIES WILL BE ON PAD.

5/25/11



LAND SURVEYING AND MAPPING
LAFAYETTE - WINTER PARK
Ph 303 666 0379 Fx 303 665 6320

CARRIZO OIL & GAS, INC
DIETZLER 11-44-9-60 PAD

SE1/4 SE1/4 SEC. 11 T9N R60W
6th PM WELD COUNTY COLORADO