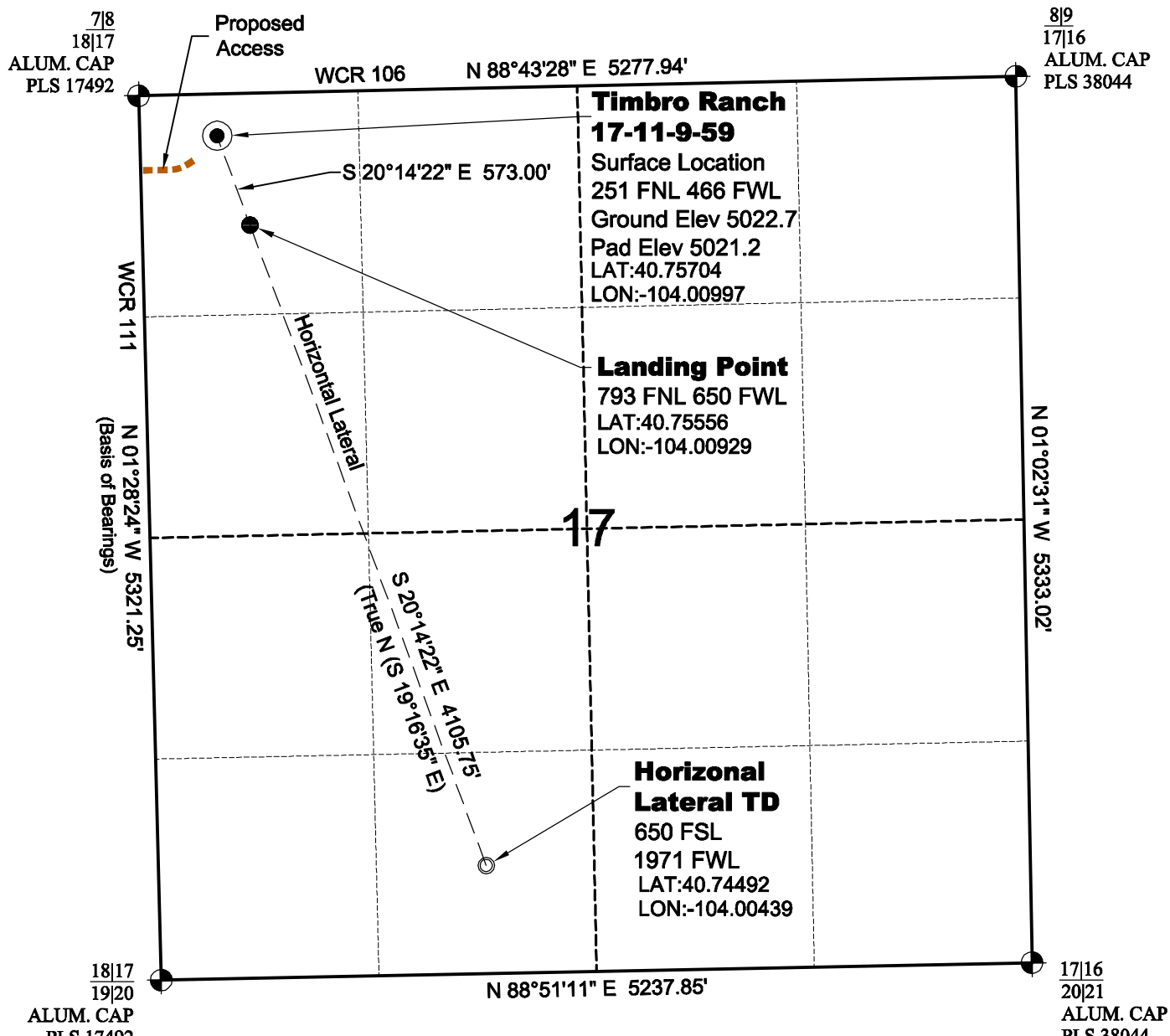


# WELL LOCATION MAP

**TIMBRO RANCH**  
**17-11-9-59 PAD**



## SURVEYOR'S STATEMENT

The undersigned hereby states that the well location shown hereon was staked on the ground based on existing monumentation and/or physical evidence found in the field and is correct to the best of my knowledge, information and belief.

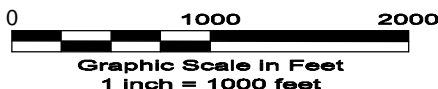
## NOTES

- 1.) Horizontal coordinates based on NGS control point "SNOW" and vertical datum based on NGS control point "G 209" with an elevation of 4955.32. NAVD 1988.
- 2.) All directions, distances, and dimensions shown hereon are based on coordinates from the "Colorado coordinate system of 1983 north zone" (article 52 of title 38, C.R.S.).
- 3.) All section line dimensions shown hereon are based on field measurements of existing monuments and/or physical evidence found in the field unless otherwise indicated. Refer to land survey plats deposited in Weld County.
- 4.) Physical features shown hereon are for graphical representation only.
- 5.) See Form 2A for visible improvements within 400' of wellhead.
- 6.) Distances to nearest section lines are measured perpendicularly.
- 7.) This is not a land survey nor land survey plat.
- 8.) Date of Survey 5/11/11; Date of Drawing 5/26/11. REV 0

PDOP Reading: 1.5 Instrument Operator: George Allen



North



**LAND SURVEYING AND MAPPING**  
**LAFAYETTE - WINTER PARK**  
Ph 303 666 0379 Fx 303 665 6320

**CARRIZO OIL & GAS, INC**  
**TIMBRO RANCH 17-11-9-59**

**SL NW1/4 NW1/4 SEC.17 T9N R59W**  
**HL TD SE1/4 SW1/4 SEC.17 T9N R59W**  
**6th PM WELD COUNTY COLORADO**