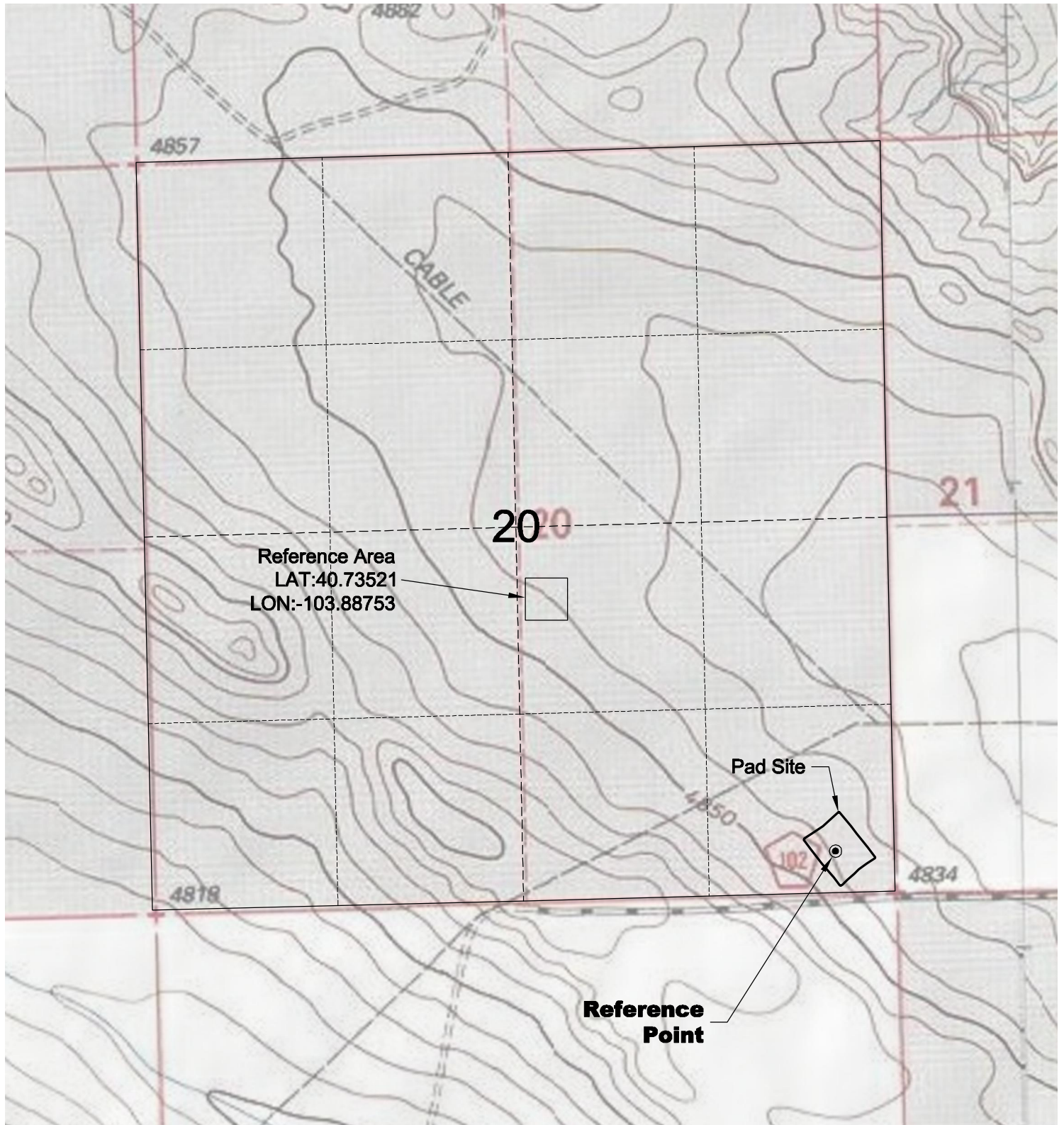
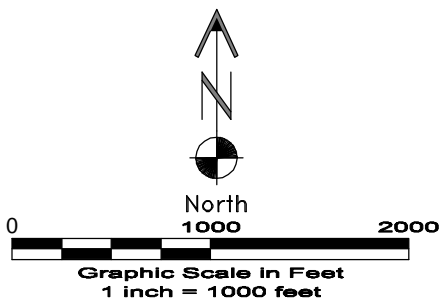


REFERENCE AREA MAP



DWG: G:\GEO SURV\Weld\North\Carrizo 110004\Wellplate\Bringelson 20-44-9-58\F2A R1.dwg USER: MTC DATE: May 25, 2011 10:59am



 **GEO SURV** 
LAND SURVEYING AND MAPPING
LAFAYETTE - WINTER PARK
Ph 303 666 0379 Fx 303 665 6320

CARRIZO OIL & GAS, INC
BRINGELSON 20-44-9-58 PAD

SE1/4 SE1/4 SEC. 20 T9N R58W
6th PM WELD COUNTY COLORADO

5/25/11